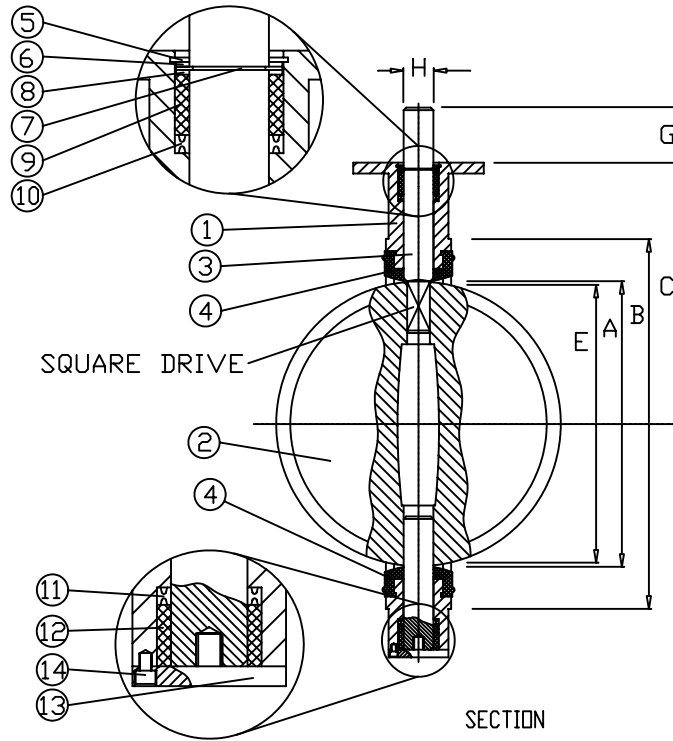
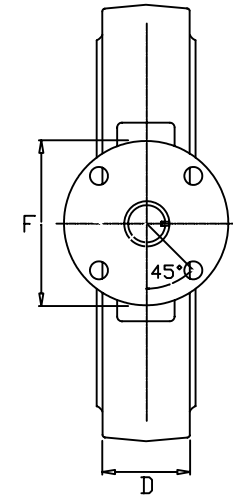


FLOW VIEW



SECTION




TOP VIEW

VALVE DIMENSIONS

Size	A	B	C	D	E	F	G	H	Keyway	Weight	Top Plate Drilling		
											Bolt Circle	No. of Holes	Hole Dia.
14"	13 1/4	17 9/16	12	3	13 1/8	6	2 1/4	1 3/8	5/16x5/16	93	5	4	9/16
16"	15 1/4	20 1/8	12 61/64	4	15	6	2 1/4	1 5/8	3/8x3/8	154	5	4	9/16
18"	17 1/4	21 1/2	14 1/2	4 1/4	16 7/8	8	3	1 7/8	1/2x1/2	204	6 1/2	4	13/16
20"	19 1/4	23 3/4	15 7/8	5	18 3/4	8	3	2 1/8	1/2x1/2	274	6 1/2	4	13/16
24"	24 1/2	27 3/4	22 1/4	6	22 5/8	8	3	2 1/8	1/2x1/2	274	6 1/2	4	13/16

NOTES:

The figure 396 cannot be used on a pipe or flange with an inside diameter less than the "E" dimension.

Item No.	Name	No. Req'd	Material	Remarks	SUBASSEMBLY PART NUMBER									
					Trim	Part	Size	Figure No.	Style					
1	WAFER BODY	1												
2	DISC	1												
3	STEM	1												
4	SEAT	1												
5	CLIP	1												
6	WASHER	1												
7	CLIP	1												
8	WASHER	1												
9	BUSHING	1												
10	V-PACKING, UPPER	1												
11	V-PACKING, LOWER	1												
12	BUSHING	1												
13	CAP PLATE	1												
14	CAP BOLT	1												
					<p>API Standard 609</p> <p>BY DATE DESCRIPTION</p> <p>REVISIONS</p>					<p>ABZ MANUFACTURING, Inc.</p> <p>14"-24" Figure 396 Valve Standard Wafer Pattern</p> <p>BODY: Wafer w/360° Top Plate DISC: Standard STEM: One Piece w/ Flats or Keyway SEAT: Elastomer</p> 				
					DATE: 04-04-05					DRAWING NO. 396-14-24				