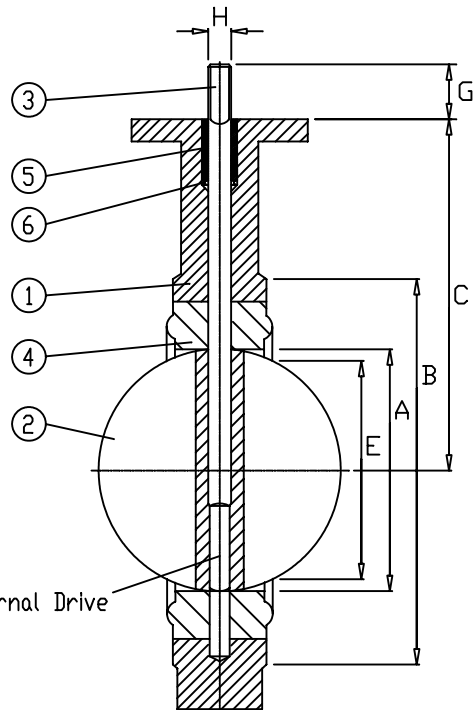
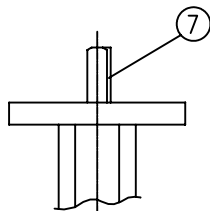
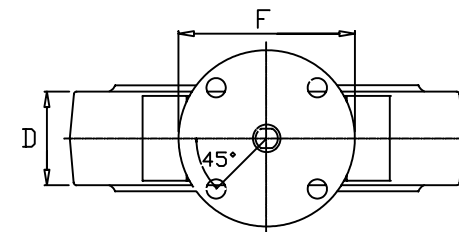
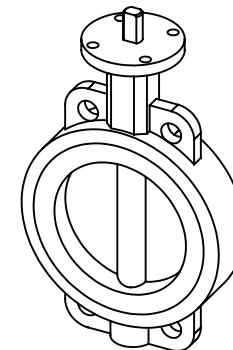


FLOW VIEW



SECTION




TOP VIEW

NOTES:  
The figure 396 can not be used on a pipe or flange with an inside diameter less than the 'E' dimension.

API Standard 609

VALVE DIMENSIONS

Size	A	B	C	D	E	F	G	H	K	Keyway	Weight	Top Plate Drilling		
												Bolt Circle	No. of Holes	Hole Dia.
2"	2	3 1/2	5 1/2	1 5/8	1 3/8	4	1 1/4	9/16	3/8	-	7	3 1/4	4	7/16
2.5"	2 1/2	4 1/4	6	1 3/4	2 1/16	4	1 1/4	9/16	3/8	-	9	3 1/4	4	7/16
3"	3	4 3/4	6 1/4	1 3/4	2 9/16	4	1 1/4	9/16	3/8	-	10	3 1/4	4	7/16
4"	4	5 7/8	7	2	3 5/8	4	1 1/4	5/8	7/16	-	13	3 1/4	4	7/16
5"	5	7 1/8	7 1/2	2 1/8	4 3/4	4	1 1/4	3/4	1/2	-	18	3 1/4	4	7/16
6"	5 3/4	8 3/16	8	2 1/8	5 1/2	4	1 1/4	3/4	1/2	-	20	3 1/4	4	7/16
8"	7 3/4	10 1/4	9 1/2	2 1/2	7 1/2	6	1 1/4	7/8	5/8	-	35	5	4	9/16
10"	9 3/4	12 9/16	10 3/4	2 1/2	9 19/32	6	2	1 1/8		1/4x1/8	46	5	4	9/16
12"	11 3/4	14 3/4	12 1/4	3	11 9/16	6	2	1 1/8		1/4x1/8	70	5	4	9/16

Item No.	Name	No. Req'd	Material	Remarks	SUBASSEMBLY PART NUMBER					
					Trim	Part	Size	Figure No.	Style	
1	Wafer Body	1								
2	Disc	1								
3	Stem	1								
4	Seat	1								
5	Bushing	1								
6	Seal	1								
7	Key	1								
					<b>ABZ MANUFACTURING, Inc.</b> 2"-12" Figure 396 Valve Standard Wafer Pattern					
					BODY: Wafer w/360° Top Plate DISC: Standard STEM: One Piece w/Flats/Keyway SEAT: Elastomer					
										
					BY	DATE	DESCRIPTION			
					REVISIONS			DATE: 07-02-04	DRAWING NO. 396	