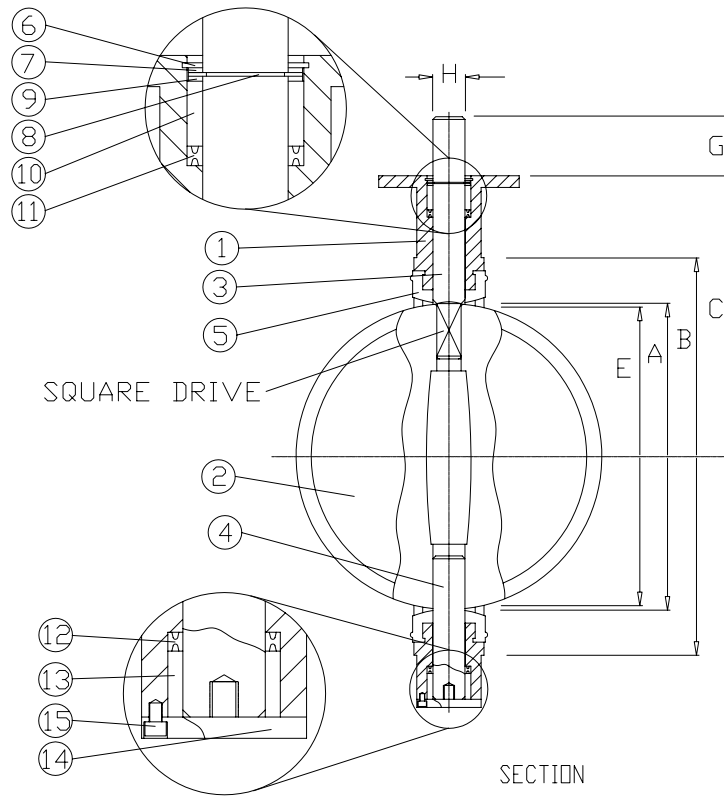
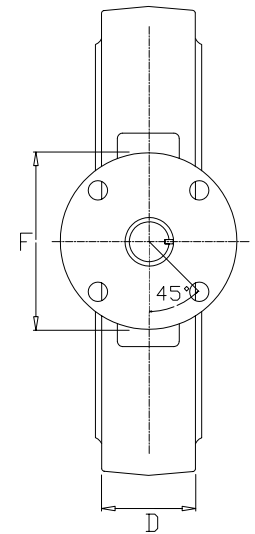


FLOW VIEW



SECTION



TOP VIEW

NOTES:

The figure 397 can not be used on a pipe or flange with an inside diameter less than the "E" dimension.

VALVE DIMENSIONS

Size	A	B	C	D	E	F	G	H	Keyway	Weight	Top Plate Drilling			Tapped Lug Data		
											Bolt Circle	No. of Holes	Hole Dia.	Bolt Circle	No. of Holes	Tap
14"	13 1/4	17 9/16	12	3	13 1/8	6	2 1/4	1 3/8	5/16x5/16	115	5	4	9/16	18 3/4	12	1-8 UNC
16"	15 1/4	20 1/8	12 61/64	4	15	6	2 1/4	1 5/8	3/8x3/8	180	5	4	9/16	21 1/4	16	1-8 UNC
18"	17 1/4	21 1/2	14 1/2	4 1/4	16 7/8	8	3	1 7/8	1/2x1/2	244	6 1/2	4	13/16	22 3/4	16	1 1/8-7 UNC
20"	19 1/4	23 3/4	15 7/8	5	18 3/4	8	3	2 1/8	1/2x1/2	270	6 1/2	4	13/16	25	20	1 1/8-7 UNC
24"	24 1/2	27 3/4	22 1/4	6	22 5/8	8	3	2 1/8	1/2x1/2	498	6 1/2	4	13/16	29 1/2	20	1 1/4-7 UNC

Item No.	Name	No. Req'd	Material	Remarks
1	LUG BODY	1		
2	DISC	1		
3	STEM, UPPER	1		
4	STEM, LOWER	1		
5	SEAT	1		
6	CLIP	1		
7	WASHER	1		
8	CLIP	1		
9	WASHER	1		
10	BUSHING	1		
11	V-PACKING, UPPER	1		
12	V-PACKING, LOWER	1		
13	BUSHING	1		
14	CAP PLATE	1		
15	CAP BOLT	1		

SUBASSEMBLY PART NUMBER				
Trim	Part	Size	Figure No.	Style
ABZ MANUFACTURING, Inc. 14"-24" Figure 397 Valve Standard Lug Pattern				
BODY: Lug w/360° Top Plate DISC: Standard STEM: Two Piece w/Keyway SEAT: Elastomer				
BY DATE DESCRIPTION		REVISIONS		DATE: 07-02-04
				DRAWING NO. 14-24 397