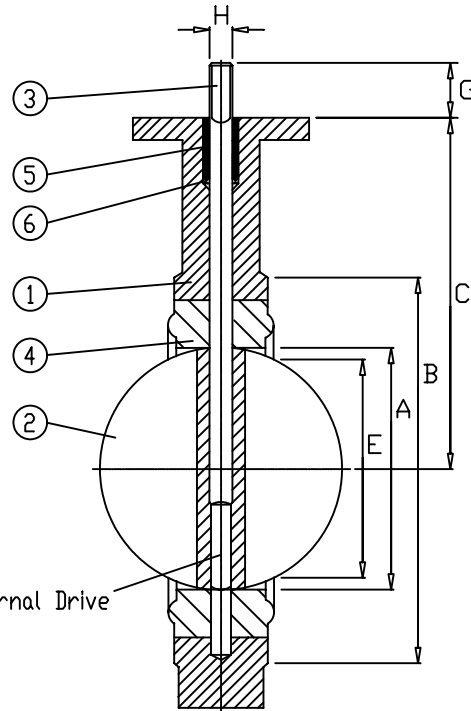
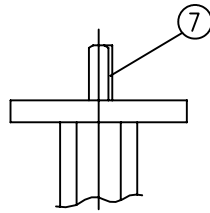
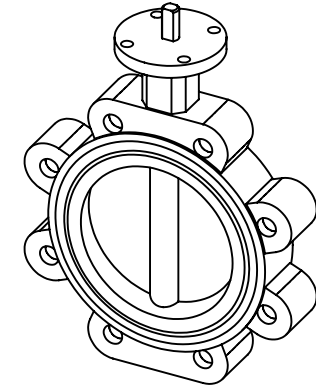


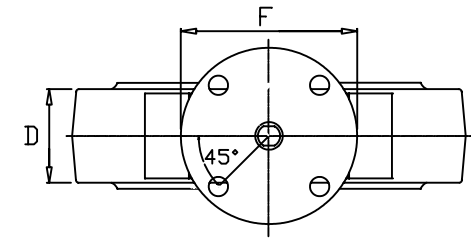
FLOW VIEW



SECTION



TOP VIEW



VALVE DIMENSIONS

Size	A	B	C	D	E	F	G	H	K	Keyway	Weight	Top Plate Drilling			Tapped Lug Data		
												Bolt Circle	No. of Holes	Hole Dia.	Bolt Circle	No. of Holes	Tap
2"	2	3 1/2	5 1/2	1 5/8	1 3/8	4	1 1/4	9/16	3/8	-	7 1/2	3 1/4	4	7/16	4 3/4	4	5/8-11 UNC
2.5"	2 1/2	4 1/4	6	1 3/4	2 1/16	4	1 1/4	9/16	3/8	-	9 1/2	3 1/4	4	7/16	5 1/2	4	5/8-11 UNC
3"	3	4 3/4	6 1/4	1 3/4	2 9/16	4	1 1/4	9/16	3/8	-	10	3 1/4	4	7/16	6	4	5/8-11 UNC
4"	4	5 7/8	7	2	3 5/8	4	1 1/4	5/8	7/16	-	18	3 1/4	4	7/16	7 1/2	8	5/8-11 UNC
5"	5	7 1/8	7 1/2	2 1/8	4 3/4	4	1 1/4	3/4	1/2	-	22	3 1/4	4	7/16	8 1/2	8	3/4-10 UNC
6"	5 3/4	8 3/16	8	2 1/8	5 1/2	4	1 1/4	3/4	1/2	-	26	3 1/4	4	7/16	9 1/2	8	3/4-10 UNC
8"	7 3/4	10 1/4	9 1/2	2 1/2	7 1/2	6	1 1/4	7/8	5/8	-	42	5	4	9/16	11 3/4	8	3/4-10 UNC
10"	9 3/4	12 9/16	10 3/4	2 1/2	9 19/32	6	2	1 1/8	-	1/4x1/8	60	5	4	9/16	14 1/4	12	7/8-9 UNC
12"	11 3/4	14 3/4	12 1/4	3	11 9/16	6	2	1 1/8	-	1/4x1/8	90	5	4	9/16	17	12	7/8-9 UNC

NOTES:

The figure 397 can not be used on a pipe or flange with an inside diameter less than the "E" dimension.

API Standard 609

Item No.	Name	No. Req'd	Material	Remarks
1	Lugged Body	1		
2	Disc	1		
3	Stem	1		
4	Seat	1		
5	Bushing	1		
6	Seal	1		
7	Key	1		

SUBASSEMBLY PART NUMBER

Trim	Part	Size	Figure No.	Style

ABZ MANUFACTURING, INC.

2"-12" Figure 397 Valve  
Standard Lug Pattern

BODY: Tapped Lug w/360° Top Plate  
DISC: Standard  
STEM: One Piece w/Flats/Keyway  
SEAT: Elastomer



BY	DATE	DESCRIPTION

REVISIONS	DATE:	07-02-04	DRAWING NO.	ED 397