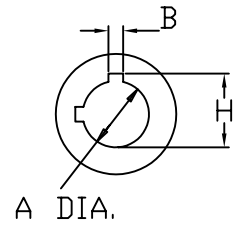
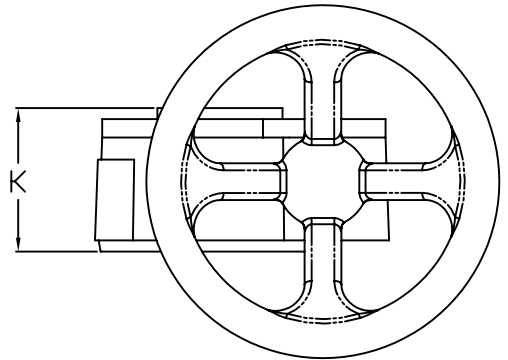
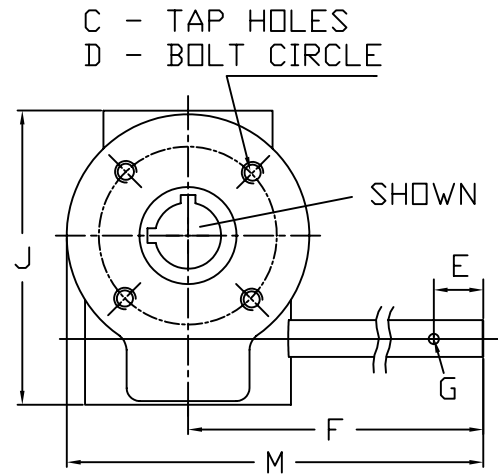
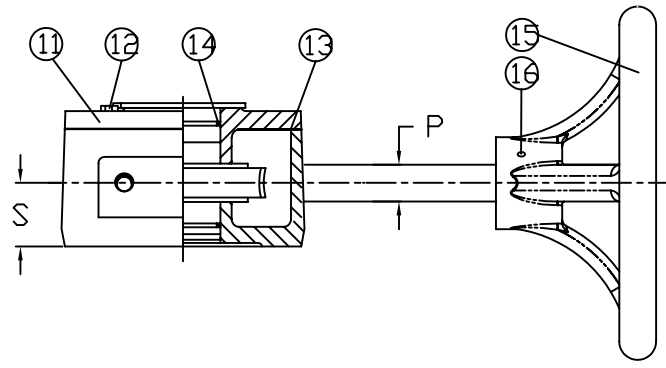
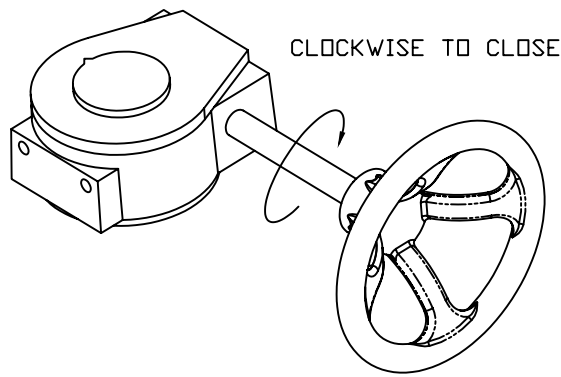
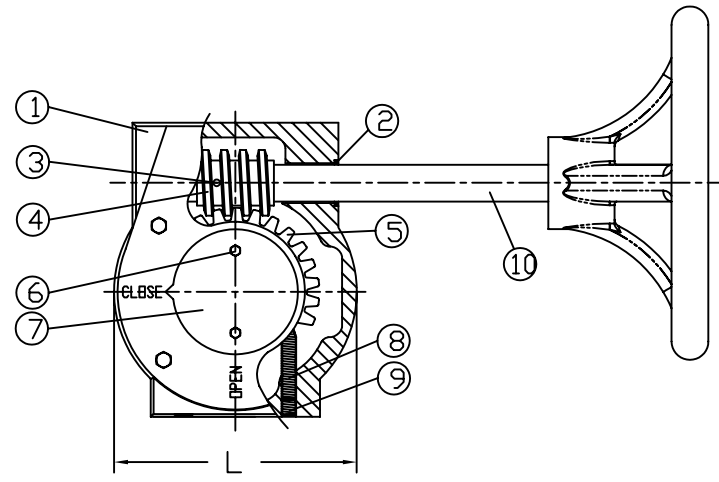


VALVE SIZE	OPERATOR	C	D	E	F	G	P	J	K	L	M	S
2"-6"	A-10	4 3/8 - 16 x 3/4	3 1/4	5/8	7	3/16	5/8	5 1/8	2 5/16	4 1/4	9 1/8	1 1/4
8"-12"	A-20	4 1/2 - 13 x 1	5	1 5/32	10 1/16	3/16	3/4	7	3	6 1/8	13 1/8	1 1/2
14"-16"	A-30	4 1/2 - 13 x 1	5	1 5/32	12	3/16	3/4	7 7/8	3 3/16	6 3/4	15 3/8	1 1/2
18"-20"	A-40	4 3/4 - 10 x 1 1/8	6 1/2	1 5/16	12 1/8	1/4	1	11 3/8	4 1/2	10 1/4	17	2 1/2

CONTACT ABZ FOR VALVES 24" AND UP



GEAR PARTS LIST		
ITEM NO.	NAME	MATERIAL
1	HOUSING	ASTM A126, CLASS B
2	SEALING RING	RUBBER
3	PIN	STEEL
4	WORM	AISI 1045 OR 1050
5	WORM GEAR	ASTM 65-45-12,70-50-05
6	SCREW	AISI 1030
7	INDICATOR	AISI 1030
8	ADJUSTABLE SCREW	AISI 2030
9	SCREW	AISI 1030
10	STEM	AISI 1045 OR 1050
11	HOUSING COVER	ASTM A126, CLASS B
12	SCREW	AISI 1030
13	SEALING RING	RUBBER
14	SEALING RING	RUBBER
15	HANDWHEEL	ASTM A126, CLASS B
16	PIN	STEEL

MOUNTING DIMENSION DATA				
VALVE SIZE	OPERATOR	A	B	H
2"-6"	A-10	1.130	0.25	1.257
8"-12"	A-20	1.130	0.25	1.257
14"	A-30	1.376	0.312	1.534
16"	A-30	1.626	0.375	1.815
18"	A-40	1.876	0.50	2.128
20"	A-40	2.126	0.50	2.378

TECHNICAL DATA					
ITEM	RATIO	INPUT TORQUE IN LBS.	OUTPUT TORQUE IN LBS.	HANDWHEEL DIAMETER	WEIGHT IN LBS.
A-10	24:1	593	2,655	6"	7.5
A-20	30:1	1,200	6,838	12"	23.5
A-30	50:1	1,200	10,621	12"	31
A-40	80:1	1,200	22,128	16"	72

UNLESS OTHERWISE SPECIFIED:		DATE	NAME	ABZ VALVES & CONTROLS
DIMENSIONS ARE IN INCHES TOLERANCES: FRACTIONAL ± ANGULAR: MACH ± BEND ± TWO PLACE DECIMAL ± THREE PLACE DECIMAL ±				
PROPRIETARY AND CONFIDENTIAL THE INFORMATION CONTAINED IN THIS DRAWING IS THE SOLE PROPERTY OF ABZ VALVES & CONTROLS. ANY REPRODUCTION IN PART OR AS A WHOLE WITHOUT THE WRITTEN PERMISSION OF ABZ VALVES & CONTROLS IS PROHIBITED.				SIZE DWG. NO. REV E ABZ GEAR 2
DO NOT SCALE DRAWING				SCALE: 1:1 DATE: 08-17-05 SHEET 1 OF 1