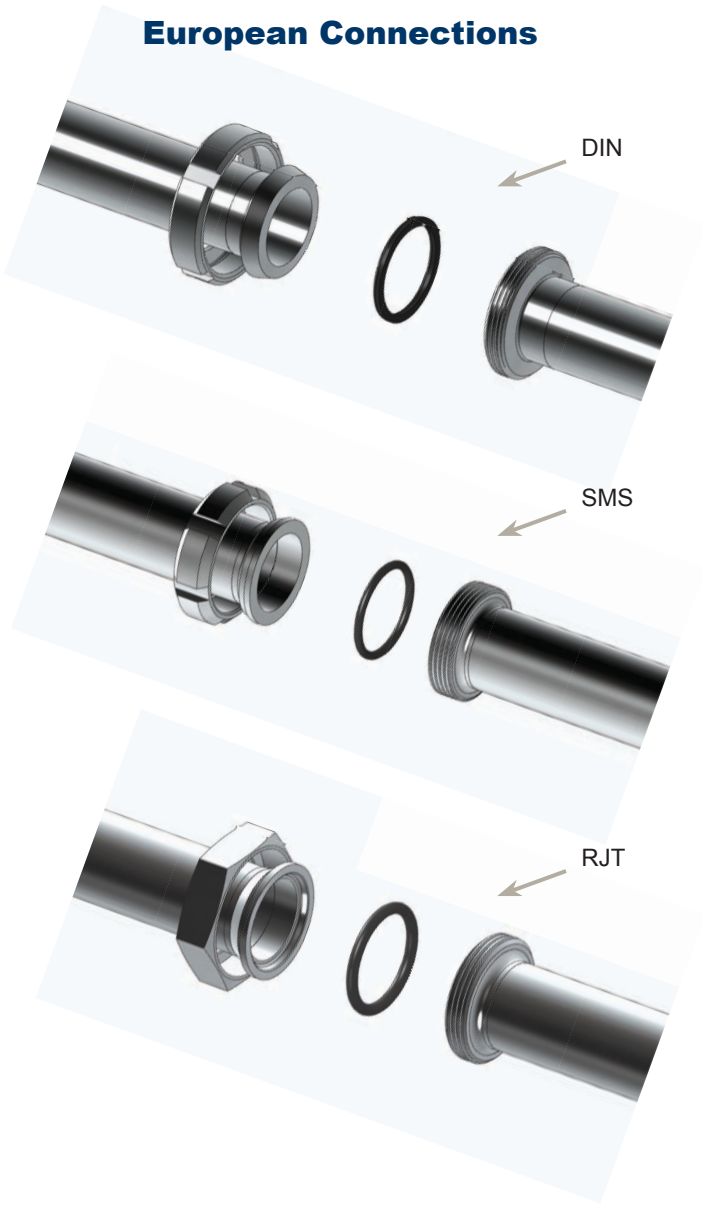


Bradford™ Euro Fittings

European Connections

Product Specifications



Size range:

- 1" - 4" OD

Materials:

- G = 304 stainless steel
- R = 316 stainless steel

Finish:

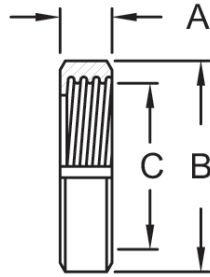
- 3A sanitary finish ID and OD

H
European
Fittings

Index

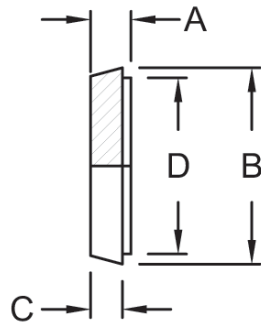
DIN fittings	82	Gaskets	85
SMS fittings	83		
RJT fittings.....	84		

• see pages 227-229 for fittings identification

DIN 11851**DIN Round Nut (DIN 11857) - 13R**

Size	DN Size	A	B	C	304 Stainless Steel Part Number
1"	25	.83	2.48	2.05	13R-G100DIN
1½"	40	.83	3.07	2.56	13R-G150DIN
2"	50	.87	3.62	3.07	13R-G200DIN
2½"	65	.98	4.41	3.74	13R-G250DIN
3"	80	1.14	5.00	4.33	13R-G300DIN
4"	100	1.22	5.83	5.12	13R-G400DIN

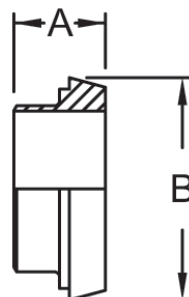
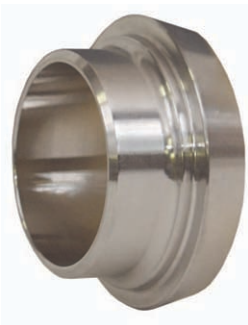
H
European
Fittings

DIN Blank Cap - 16AMP

Size	DN Size	A	B	C	D	316 Stainless Steel Part Number
1"	25	.51	1.73	.39	1.38	16AMP-R100DIN
1½"	40	.51	2.20	.39	1.89	16AMP-R150DIN
2"	50	.55	2.68	.43	2.40	16AMP-R200DIN
2½"	65	.63	3.39	.47	3.11	16AMP-R250DIN
3"	80	.63	3.66	.47	3.39	16AMP-R300DIN
4"	100	.79	4.76	.59	4.49	16AMP-R400DIN

DIN Welding Male - 15A

Size	DN Size	A	B	316 Stainless Steel Part Number
1"	25	1.14	2.04	15A-R100DIN
1½"	40	1.30	2.55	15A-R150DIN
2"	50	1.38	3.07	15A-R200DIN
2½"	65	1.57	3.74	15A-R250DIN
3"	80	1.57	4.31	15A-R300DIN
4"	100	2.13	5.12	15A-R400DIN

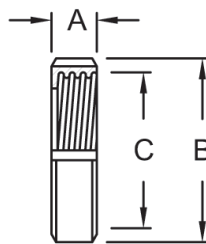
DIN Welding Liner - 14A

Size	DN Size	A	B	316 Stainless Steel Part Number
1"	25	.87	1.73	14A-R100DIN
1½"	40	1.02	2.20	14A-R150DIN
2"	50	1.10	2.68	14A-R200DIN
2½"	65	1.26	3.39	14A-R250DIN
3"	80	1.26	3.94	14A-R300DIN
4"	100	1.73	4.76	14A-R400DIN

SMS

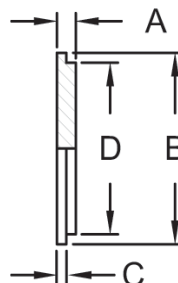
SMS Round Nut - 13R

Size	DN Size	A	B	C	304 Stainless Steel Part Number
1"	25	.75	2.01	1.57	13R-G100SMS
1½"	38	.91	2.91	2.36	13R-G150SMS
2"	51	.94	3.31	2.76	13R-G200SMS
2½"	63.5	1.10	3.94	3.35	13R-G250SMS
3"	76	1.18	4.49	3.86	13R-G300SMS
4"	101.6	1.22	5.43	4.92	13R-G400SMS



SMS Blank Cap - 16AMP

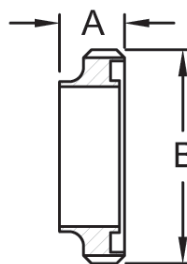
Size	DN Size	A	B	C	D	316 Stainless Steel Part Number
1"	25	.30	1.40	.14	1.25	16AMP-R100SMS
1½"	38	.31	2.20	.16	1.89	16AMP-R150SMS
2"	51	.35	2.56	.16	2.38	16AMP-R200SMS
2½"	63.5	.35	3.15	.16	2.89	16AMP-R250SMS
3"	76	.43	3.66	.20	3.41	16AMP-R300SMS
4"	101.6	.43	4.65	.23	4.43	16AMP-R400SMS



H
European Fittings

SMS Welding Male - 15A

Size	DN Size	A	B	316 Stainless Steel Part Number
1"	25	.75	1.57	15A-R100SMS
1½"	38	.91	2.36	15A-R150SMS
2"	51	.91	2.76	15A-R200SMS
2½"	63.5	1.06	3.35	15A-R250SMS
3"	76	1.06	3.86	15A-R300SMS
4"	101.6	1.18	4.92	15A-R400SMS



SMS Welding Liner - 14A

Size	DN Size	A	B	316 Stainless Steel Part Number
1"	25	.61	1.40	14A-R100SMS
1½"	38	.63	2.17	14A-R150SMS
2"	51	.67	2.56	14A-R200SMS
2½"	63.5	.67	3.16	14A-R250SMS
3"	76	.75	3.66	14A-R300SMS
4"	101.6	.75	4.65	14A-R400SMS



Spanner Wrench - SP

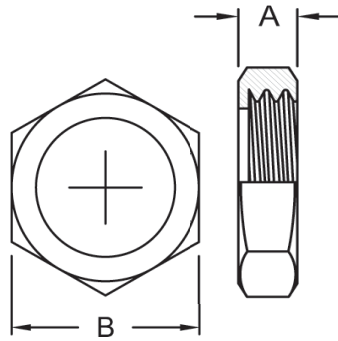
- for use on DIN or SMS Round Nuts

Used On Sizes	A	Nickel Plated Steel Part Number
1" - 1½"	9.75	DIN-SMS-60/90SP
2" - 4"	13.00	DIN-SMS90/155SP



RJT BS:4825

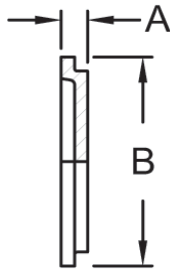
RJT Hex Nut - 13H



Size	A	B	304 Stainless Steel Part Number
1"	.87	2.00	13H-G100RJT
1½"	.87	2.56	13H-G150RJT
2"	.87	3.12	13H-G200RJT
2½"	.87	3.62	13H-G250RJT
3"	.87	4.12	13H-G300RJT
4"	.87	5.12	13H-G400RJT

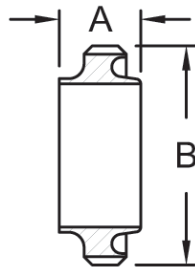
H
European Fittings

RJT Blank Cap - 13RBN



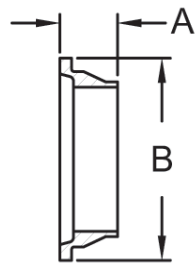
Size	A	B	304 Stainless Steel Part Number
1"	.32	1.63	13RBN-G100RJT
1½"	.32	2.12	13RBN-G150RJT
2"	.32	2.62	13RBN-G200RJT
2½"	.32	3.12	13RBN-G250RJT
3"	.32	3.63	13RBN-G300RJT
4"	.32	4.63	13RBN-G400RJT

RJT Welding Male - 15A



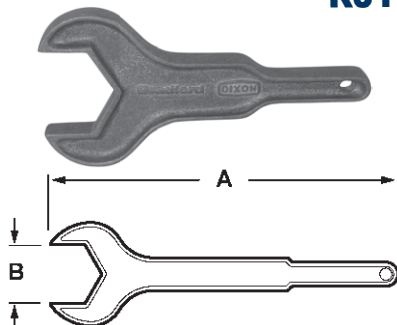
Size	A	B	316 Stainless Steel Part Number
1"	1.06	1.80	15A-R100RJT
1½"	1.06	2.30	15A-R150RJT
2"	1.06	2.86	15A-R200RJT
2½"	1.06	3.36	15A-R250RJT
3"	1.06	3.86	15A-R300RJT
4"	1.06	4.86	15A-R400RJT

RJT Welding Liner - 14A



Size	A	B	316 Stainless Steel Part Number
1"	.77	1.63	14A-R100RJT
1½"	.77	2.13	14A-R150RJT
2"	.77	2.63	14A-R200RJT
2½"	.77	3.13	14A-R250RJT
3"	.77	3.63	14A-R300RJT
4"	.77	4.63	14A-R400RJT

RJT Spanner Wrench - SP



Size	DN Size	A	B	Aluminum Part Number
1"	25-28	10	2.00	RJT-100SP
1½"	25-28	11.5	2.56	RJT-150SP
2"	51-101.6	12	3.12	RJT-200SP
2½"	51-101.6	13.5	3.62	RJT-250SP
3"	51-101.6	14.5	4.12	RJT-300SP
4"	51-101.6	17.5	5.12	RJT-400SP

Euro Gaskets

DIN Buna-N - Black

- color code: red dot
- meets 21CFR 177.2600
- refer to pages 216-218 for compatibility information

Size	DN Size	ID	OD	Height	Part Number
1"	25	1.18	1.57	.20	40MP-U100DIN
1½"	40	1.65	2.05	.20	40MP-U150DIN
2"	50	2.13	2.52	.20	40MP-U200DIN
2½"	65	2.80	3.19	.20	40MP-U250DIN
3"	80	3.35	3.74	.20	40MP-U300DIN
4"	100	4.09	4.49	.24	40MP-U400DIN

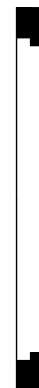


H
European
Fittings

SMS Buna-N - Black

- color code: red dot
- meets 21CFR 177.2600
- refer to pages 216-218 for compatibility information

Size	DN Size	ID	OD	Part Number
1"	25	.98	1.26	40MP-U100SMS
1½"	38	1.49	1.89	40MP-U150SMS
2"	51	2.00	2.40	40MP-U200SMS
2½"	63.5	2.50	2.89	40MP-U250SMS
3"	76	2.99	3.39	40MP-U300SMS
4"	101.6	4.09	4.49	40MP-U400SMS



RJT Buna-N - Black

- color code: red dot
- meets 21CFR 177.2600
- refer to pages 216-218 for compatibility information

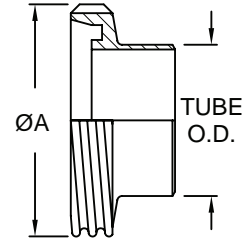
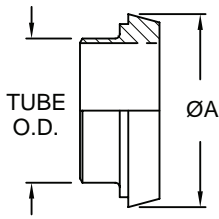
Size	ID	Ø	Part Number
1"	1.06	.25	40MP-U100RJT
1½"	1.56	.25	40MP-U150RJT
2"	2.06	.25	40MP-U200RJT
2½"	2.56	.25	40MP-U250RJT
3"	3.06	.25	40MP-U300RJT
4"	4.06	.25	40MP-U400RJT



- Other materials are available

Identifying Fittings

DIN Ferrules



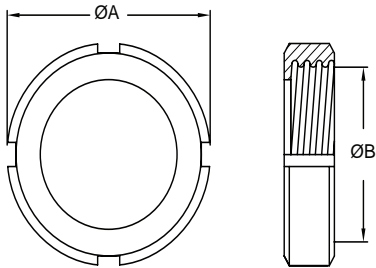
Liners

Tube OD (inches)	ØA
1	1.73
1½	2.20
2	2.68
2½	3.39
3	3.94
4	4.76

Males

Tube OD (inches)	ØA
1	2.04
1½	2.56
2	3.07
2½	3.74
3	4.31
4	5.10

DIN Round Nuts

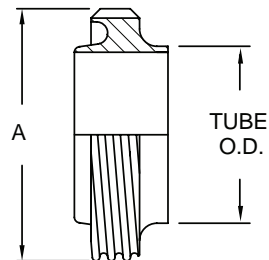
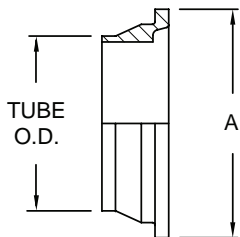


Nut

Tube OD (inches)	DN	ØA	B Thread ID	Threads per inch
1	25	2.48	1.88	6
1½	40	3.07	2.39	6
2	50	3.62	2.90	6
2½	65	4.41	3.49	6
3	80	5.00	4.14	4
4	100	5.83	4.94	4

Identifying Fittings

RJT Ferrules



Liners

Males

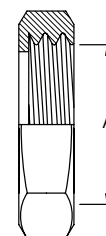
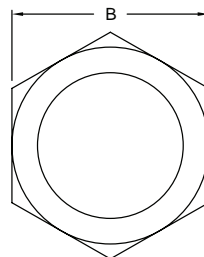
Tube OD (inches)	ØA
1	1.63
1½	2.13
2	2.63
2½	3.13
3	3.63
4	4.63

Tube OD (inches)	ØA
1	1.80
1½	2.30
2	2.86
2½	3.36
3	3.86
4	4.86

RJT Hex Nuts

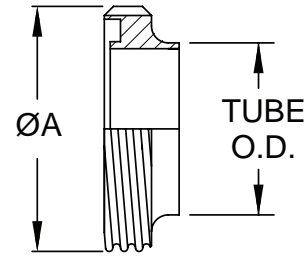
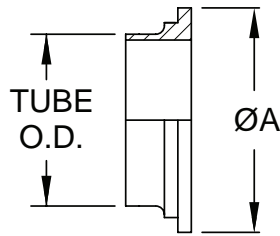
Nut

Tube OD (inches)	ØA Thread ID	B Across flats	Threads per inch
1	1.68	2.00	8
1½	2.18	2.56	8
2	2.69	3.12	6
2½	3.19	3.62	6
3	3.69	4.12	6
4	4.69	5.12	6



Identifying Fittings

SMS Couplings



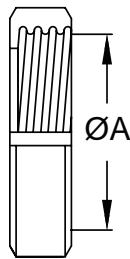
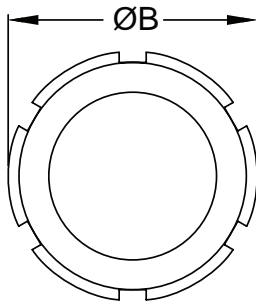
Liners

Tube OD (inches)	ØA
1	1.40
1½	2.17
2	2.56
2½	3.15
3	3.66
4	4.65

Males

Tube OD (inches)	ØA
1	1.55
1½	2.34
2	2.74
2½	3.33
3	3.84
4	4.90

SMS Round Nuts



Nut

Tube OD (inches)	ØA Thread ID	ØB	Threads per inch
1	1.44	2.01	6
1½	2.22	2.91	6
2	2.62	3.31	6
2½	3.21	3.94	6
3	3.72	4.49	6
4	4.72	5.43	4

Available At:



Bay Port Valve & Fitting, Inc.

P.O. Box 315 Phone: (863) 425-0023
 2295 S.R. 37 South (800) 369-0194
 Mulberry, FL. 33860 Fax: (863) 425-5091

www.bayportvalve.com