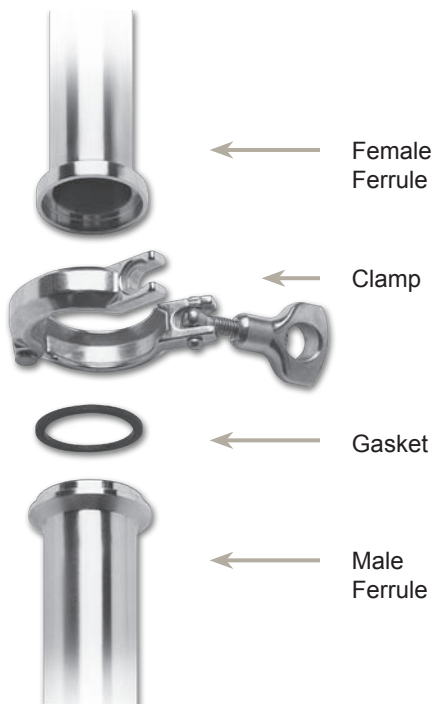


Bradford™ I-line & Q-line Fittings

A Complete I-line Connection

Product Specifications



Size range:

- 1" - 8" tube OD I-line*
- 1" - 4" tube OD Q-line

*stock items to 4", 6" & 8" items are special order

Materials:

- G = 304 stainless steel
- R = 316L stainless steel
- other alloys are available

Finish:

- 3A sanitary finish ID and OD

G

I-Line &
Q-Line

Available At:



Bay Port Valve & Fitting, Inc.

P.O. Box 315 Phone: (863) 425-0023
 2295 S.R. 37 South (800) 369-0194
 Mulberry, FL. 33860 Fax: (863) 425-5091

www.bayportvalve.com

Index

Clamps: I-line & Q-line.....	3	I-line Elbows	8
I-line Ferrules.....	4.5	Miscellaneous.....	9
Q-line Ferrules.....	6	I-line Gaskets.....	9-10
Caps: I-line & Q-line	6	Q-line Gaskets.....	11
I-line Adapters.....	7		

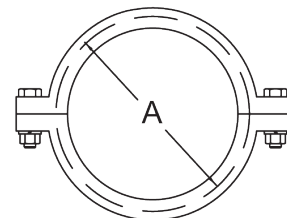
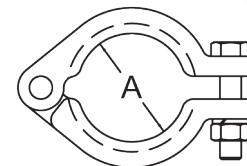
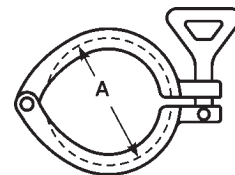
I-line/Q-line Clamps

Heavy Duty Clamps - 13ILH

- Q-line service pressure rating for all sizes: 150 PSI @ 70°F and 125 PSI @ 250°F

Tube OD	Service Pressure Rating @ 70°F *	Service Pressure Rating @ 250°F *	A	Part Number
1" - 1½"	700	250	2.122	13ILH100-150
2"	450	250	2.654	13ILH200
2½"	450	200	3.185	13ILH250
3"	350	150	3.717	13ILH300
4"	200	125	4.820	13ILH400
6"	150	100	7.689	13ILH600
8"	125	75	9.689	13ILH800

* wing nut tightened to 25 in. lb. of torque



Bolted Clamps - 13ILB

Tube OD	Service Pressure Rating @ 70°F *	Service Pressure Rating @ 250°F *	A	Part Number
1" - 1½"	1220	1100	2.122	13ILB100-150
2"	900	830	2.654	13ILB200
2½"	720	660	3.185	13ILB250
3"	600	550	3.717	13ILB300
4"	570	525	4.820	13ILB400

Tube OD	Service Pressure Rating @ 70°F *	Service Pressure Rating @ 250°F *	A	Part Number
6"	300	200	7.689	13ILB600
8"	250	150	9.689	13ILB800

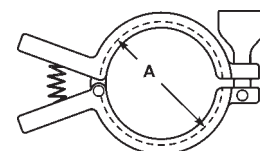
* nut tightened to 20 ft. lb. of torque

Squeeze Clamps - 13IL-Q

Tube OD	Service Pressure Rating @ 70°F *	Service Pressure Rating @ 250°F *	A	Part Number
1" - 1½"	700	250	2.122	13IL-Q100150
2"	450	250	2.654	13IL-Q200

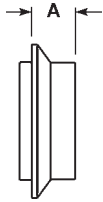
* wing nut tightened to 25 in. lb. of torque

**2010
NEW**



G
I-Line &
Q-Line

I-line/Q-line Ferrules



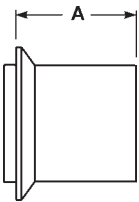
A Male I-Line Short Weld Ferrules - 14WI

Tube OD	A	304 Stainless Steel Part Number	316L Stainless Steel Part Number
1"	.600	14WI-G100	14WI-R100
1½"	.765	14WI-G150	14WI-R150
2"	.790	14WI-G200	14WI-R200
2½"	.848	14WI-G250	14WI-R250
3"	.906	14WI-G300	14WI-R300
4"	1.031	14WI-G400	14WI-R400
6"	.940	---	14WI-R600
8"	.940	---	14WI-R800

G

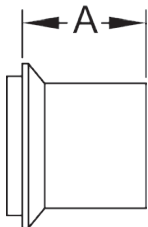
I-Line &
Q-Line

A Male I-Line Long Weld Ferrules - 14WLI



Tube OD	A	304 Stainless Steel Part Number	316L Stainless Steel Part Number
1"	1.562	14WLI-G100	14WLI-R100
1½"	1.843	14WLI-G150	14WLI-R150
2"	2.062	14WLI-G200	14WLI-R200
2½"	2.188	14WLI-G250	14WLI-R250
3"	2.375	14WLI-G300	14WLI-R300
4"	2.688	14WLI-G400	14WLI-R400
6"	2.688	---	14WLI-R600

A Male I-Line Heavy Wall Tank Weld Ferrules - 14WHI

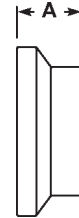


Tube OD	A	304 Stainless Steel Part Number	316L Stainless Steel Part Number
1"	1.312	14WHI-G100	14WHI-R100
1½"	1.457	14WHI-G150	14WHI-R150
2"	1.500	14WHI-G200	14WHI-R200
2½"	1.437	14WHI-G250	14WHI-R250
3"	1.500	14WHI-G300	14WHI-R300
4"	1.812	14WHI-G400	14WHI-R400

I-line/Q-line Ferrules

Female I-Line Short Weld Ferrules - 15WI

Tube OD	A	304 Stainless Steel Part Number	316L Stainless Steel Part Number
1"	.785	15WI-G100	15WI-R100
1½"	.950	15WI-G150	15WI-R150
2"	1.040	15WI-G200	15WI-R200
2½"	1.160	15WI-G250	15WI-R250
3"	1.220	15WI-G300	15WI-R300
4"	1.350	15WI-G400	15WI-R400
6"	1.125	---	15WI-R600
8"	1.125	---	15WI-R800

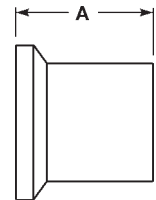


G

I-Line &
Q-Line

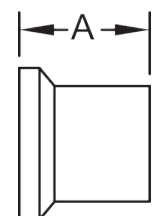
Female I-Line Long Weld Ferrules - 15WLI

Tube OD	A	304 Stainless Steel Part Number	316L Stainless Steel Part Number
1"	1.750	15WLI-G100	15WLI-R100
1½"	2.031	15WLI-G150	15WLI-R150
2"	2.312	15WLI-G200	15WLI-R200
2½"	2.500	15WLI-G250	15WLI-R250
3"	2.688	15WLI-G300	15WLI-R300
4"	3.000	15WLI-G400	15WLI-R400
6"	3.000	---	15WLI-R600

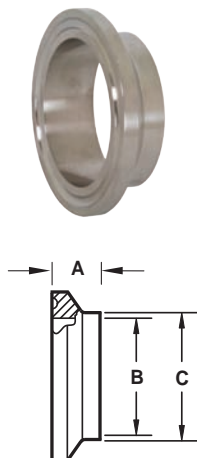


Female I-Line Heavy Wall Tank Weld Ferrules - 15WHI

Tube OD	A	304 Stainless Steel Part Number	316L Stainless Steel Part Number
1"	1.500	15WHI-G100	15WHI-R100
1½"	1.625	15WHI-G150	15WHI-R150
2"	1.750	15WHI-G200	15WHI-R200
2½"	1.750	15WHI-G250	15WHI-R250
3"	1.812	15WHI-G300	15WHI-R300
4"	2.125	15WHI-G400	15WHI-R400



I-line/Q-line Ferrules



Q-line Weld Ferrules - 14WQ

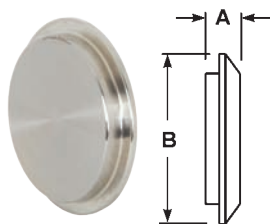
Tube OD	A	B	C	304 Stainless Steel Part Number
1"	.531	.870	1.00	14WQ-G100
1½"	.563	1.370	1.500	14WQ-G150
2"	.813	1.870	2.000	14WQ-G200
2½"	.938	2.370	2.500	14WQ-G250
3"	.938	2.870	3.000	14WQ-G300
4"	1.000	3.834	4.000	14WQ-G400

G

I-Line & Q-Line

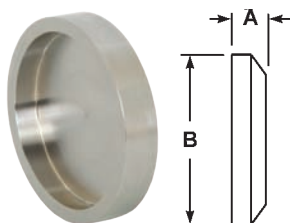
I-line/Q-line End Caps

Male I-Line Solid End Caps - 16AI-14I



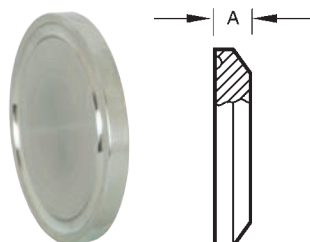
Tube OD	A	B	304 Stainless Steel Part Number	316L Stainless Steel Part Number
1"	.500	1.985	16AI-14I100	16AI-14I100R
1½"	.500	1.985	16AI-14I150	16AI-14I150R
2"	.562	2.640	16AI-14I200	16AI-14I200R
2½"	.750	3.307	16AI-14I250	16AI-14I250R
3"	.750	3.870	16AI-14I300	16AI-14I300R
4"	.750	4.870	16AI-14I400	16AI-14I400R
6"	.750	7.495	16AI-14I600	16AI-14I600R
8"	.880	9.495	---	16AI-14I800R

Female I-Line Solid End Caps - 16AI-15I



Tube OD	A	B	304 Stainless Steel Part Number	316L Stainless Steel Part Number
1"	.500	1.985	16AI-15I100	16AI-15I100R
1½"	.500	1.985	16AI-15I150	16AI-15I150R
2"	.562	2.640	16AI-15I200	16AI-15I200R
2½"	.750	3.307	16AI-15I250	16AI-15I250R
3"	.750	3.870	16AI-15I300	16AI-15I300R
4"	.750	4.870	16AI-15I400	16AI-15I400R
6"	.750	7.495	16AI-15I600	16AI-15I600R
8"	.880	9.495	---	16AI-15I800R

Q-Line Solid End Caps - 16AQ



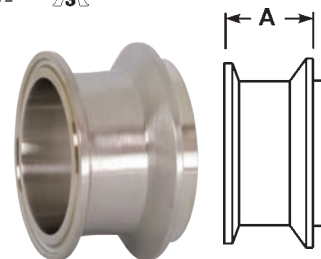
Tube OD	A	304 Stainless Steel Part Number
1"	.313	16AQ-G100
1½"	.313	16AQ-G150
2"	.438	16AQ-G200
2½"	.500	16AQ-G250
3"	.500	16AQ-G300
4"	.625	16AQ-G400

I-line/Q-line Adapters

Male I-Line x Clamp Adapters - 17-14I-14MP



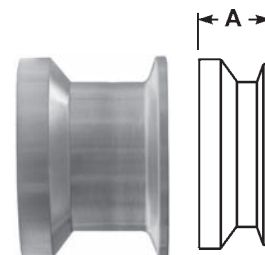
Tube OD	A	304 Stainless Steel Part Number
1"	1.093	17-14I-14MPG100
1½"	1.265	17-14I-14MPG150
2"	1.290	17-14I-14MPG200
2½"	1.312	17-14I-14MPG250
3"	1.406	17-14I-14MPG300
4"	1.656	17-14I-14MPG400



Female I-Line x Clamp Adapters - 17-15I-14MP



Tube OD	A	304 Stainless Steel Part Number
1"	1.281	17-15I-14MPG100
1½"	1.450	17-15I-14MPG150
2"	1.540	17-15I-14MPG200
2½"	1.625	17-15I-14MPG250
3"	1.718	17-15I-14MPG300
4"	1.968	17-15I-14MPG400



G
I-Line &
Q-Line

Other types of I-line adapters are available call Dixon Sanitary for information



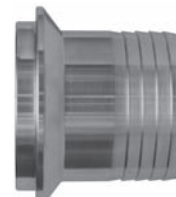
17-14I-15



17-14I-14



17-14I-14I



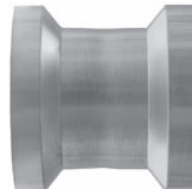
14HRI



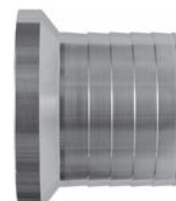
17-15I-15



17-15I-14



17-15I-15I



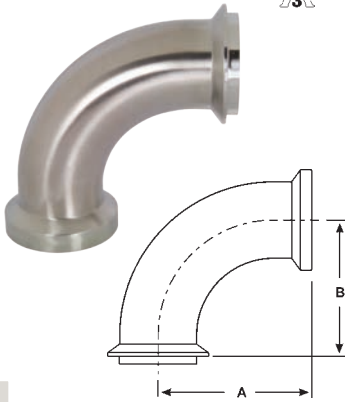
15HRI



17-14I-15I

I-line/Q-line Elbows

Female I-Line x Male I-Line Elbows - B2FI

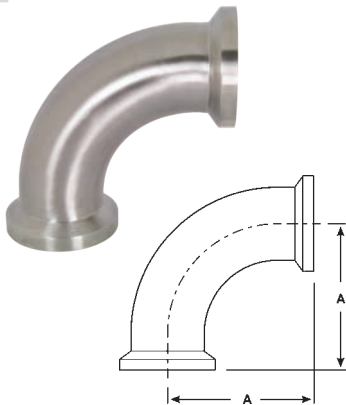


Tube OD	A	B	304 Stainless Steel Part Number
1"	2.281	2.093	B2FI-G100
1½"	3.188	3.000	B2FI-G150
2"	4.031	3.781	B2FI-G200
2½"	4.906	4.593	B2FI-G250
3"	5.718	5.406	B2FI-G300
4"	7.344	7.031	B2FI-G400

G

I-Line &
Q-Line

90° Female I-Line Elbows - B2CI



Tube OD	A	304 Stainless Steel Part Number
1"	2.281	B2CI-G100
1½"	3.188	B2CI-G150
2"	4.031	B2CI-G200
2½"	4.906	B2CI-G250
3"	5.718	B2CI-G300
4"	7.344	B2CI-G400

90° Male I-Line Elbows - B2EI



Tube OD	A	304 Stainless Steel Part Number
1"	2.093	B2EI-G100
1½"	3.000	B2EI-G150
2"	3.781	B2EI-G200
2½"	4.593	B2EI-G250
3"	5.406	B2EI-G300
4"	7.031	B2EI-G400

Other types of I-line elbows are available call Dixon Sanitary for information



B2HI



B2PI



B2KI

Miscellaneous I-line/Q-line Configurations

Other types of I-line configurations are available call Dixon Sanitary for information



28BI



28AI



B9I



B7HI



B7I



B7EI



B7AI



B7BI



3114I14I



3114I15I



3115I14I



3115I15I



3214I14I



3214I15I



3215I14I



3215I15I

G
I-Line &
Q-Line

I-line Gaskets

Buna-N - Black 3/32"



- color code: red dot
- meets 21CFR 177.2600
- refer to pages 163-165 for compatibility information

Size	Part Number
1"	40IH100
1½"	40IH150
2"	40IH200
2½"	40IH250
3"	40IH300
4"	40IH400
6"	40IH600
8"	40IH800

G

I-Line &
Q-Line

- color code: three green dots
- peroxide cured
- meets 21CFR 177.2600
- passed U.S.P. Class VI Cytotoxicity testing
- refer to pages 163-165 for compatibility information

EPDM - 3/32"

Size	Part Number
1"	40IE100
1½"	40IE150
2"	40IE200
2½"	40IE250
3"	40IE300
4"	40IE400
6"	40IE600
8"	40IE800



- color code: three green dots
- peroxide cured
- meets 21CFR 177.2600
- passed U.S.P. Class VI Cytotoxicity testing
- refer to pages 163-165 for compatibility information

EPDM - 1/16"

Size	Part Number
1"	40IE10016
1½"	40IE15016
2"	40IE20016
2½"	40IE25016
3"	40IE30016
4"	40IE40016
6"	40IE60016
8"	40IE80016



- color code: one white dot and one yellow dot
- peroxide cured
- passed U.S.P. Class VI Cytotoxicity testing
- refer to pages 163-165 for compatibility information
- meets 21CFR 177.1550

FKM (Viton®) - 1/16"

Size	Part Number
1"	40IV100
1½"	40IV150
2"	40IV200
2½"	40IV250
3"	40IV300
4"	40IV400
6"	40IV600
8"	40IV800

I-line Gaskets

Virgin PTFE (Teflon®) - 1/16"

Size	Part Number
1"	40IT100
1½"	40IT150
2"	40IT200
2½"	40IT250
3"	40IT300
4"	40IT400
6"	40IT600
8"	40IT800



- color code: no dot
- meets 21CFR 177.1550
- passed U.S.P. Class VI Cytotoxicity testing
- refer to pages 163-165 for compatibility information

CAUTION

PTFE (Teflon®) is a material subject to plastic flow. When cycled through heat and then cooled down in process lines, PTFE gaskets will not return to the original configuration and it will continue to compress as the cycling continues. This plastic flow will allow leakage if clamp torques are not maintained.

G

I-Line &
Q-Line

Q-line Gaskets

Buna-N - Black

Size	Part Number
1"	40QH100
1½"	40QH150
2"	40QH200
2½"	40QH250
3"	40QH300
4"	40QH400



- color code: red dot
- meets 21CFR 177.2600
- refer to pages 163-165 for compatibility information

Virgin PTFE (Teflon®)

Size	Part Number
1"	40QT100
1½"	40QT150
2"	40QT200
2½"	40QT250
3"	40QT300
4"	40QT400



- color code: no dot
- meets 21CFR 177.1550
- passed U.S.P. Class VI Cytotoxicity testing
- refer to pages 163-165 for compatibility information

CAUTION

PTFE (Teflon®) is a material subject to plastic flow. When cycled through heat and then cooled down in process lines, PTFE gaskets will not return to the original configuration and it will continue to compress as the cycling continues. This plastic flow will allow leakage if clamp torques are not maintained.