

get control with

check valves



Bradford Company, Inc.

800.789.1718 • www.bradfordfittings.com

valves

Get control...

clamps

end caps

hangers

ferrules

elbows

tees

laterals

reducers

valves

gaskets

Businesses from many industries have trusted **Bradford** sanitary check valves for many years. The reason: **Bradford** has the valves they need for immediate shipment nearby. **Bradford's** check valves feature quick-disconnect clamp ends (and other ends) for quick and easy cleaning.

Bradford's check valves carry the same quality that our customers have come to recognize with our other top quality fittings and valves. Check valves are used for sanitary as well as industrial applications to prevent backflow.

Spring check valves are designed to assist in closure pressure thus creating positive shut-off. They are used in lines where liquid products are made. Concentric and eccentric styles in 1"– 4" are available (call for availability).

Where full flow of product during processing is necessary, **Ball check valves** are used. When the flow of product is stopped, the ball falls back, thus preventing backflow. These are also used when processing liquid products. Sizes are from 1½"–3".

Air blow check valves are used to clear lines of CIP solutions or of product.

Bradford's high quality top value check valves are available from our various warehouses around the country. So when you need quality close by, **get control with Bradford.**

Bradford Co., Inc. stands behind its products. If, within one year of shipment, any part fails to perform to your satisfaction because of defects in material or workmanship, return the part and Bradford will, at our option, repair or replace it.

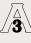
Note: Dimensions are approximate. Engineering dimensions available on request. Specifications are subject to change without notice. Some items may not be in stock. Please allow at least 4 weeks for special orders. Inquiries welcome on items available in future or not pictured.





with check valves



Bradford quality: maintaining the standard

The  Sanitary Standard was created by the dairy industry as a voluntary benchmark for product performance and sanitary safety. The standard, collaboratively developed by a group of processors, suppliers, regulatory officials and sanitation specialists, is generally accepted by federal, state and local regulatory authorities.

Our products have earned the  symbol, which requires an annual assessment to make certain each product conforms in all respects to the published standard.

Bradford Co., Inc. is proud to be a participant in the  program.

contents

spring check valve	4
ball check valve	5
air blow check valve	6
air blow adapters	7



product specifications

- size range: • 1"– 4" OD
- materials: • 316L (stock)
- finish: • clamp ends (stock)
• weld ends (special order)

If your part is not listed, call us; we may still be able to get it for you.

ordering instructions

- specify:
- quantity
 - product description and Bradford part number
 - size
 - material type
 - ship to address

check valve

Get control with **Bradford's** high quality spring check valves. Meets all 3A requirements. Designed to prevent reverse flow. Concentric and eccentric styles are available for horizontal and vertical applications.

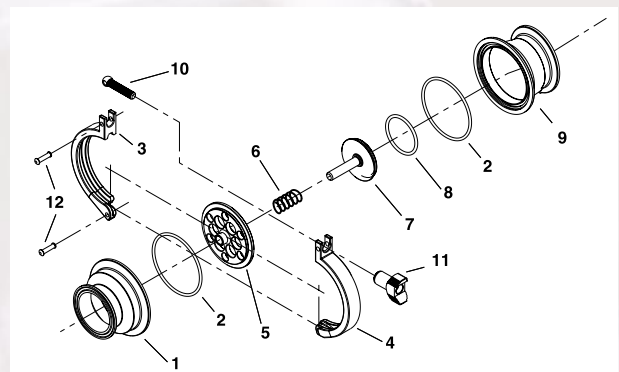
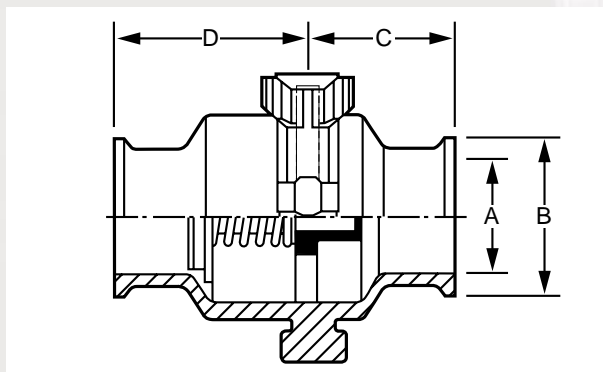
The valves open once the pressure below the valve seat exceeds the pressure above the valve seat. It closes when the pressure is equalized. Higher counter pressure will close the valve.

- **CF-8M (316) stainless steel**
- **Viton® gaskets**
- **meets 3A and USDA requirements**
- **quick disconnect from any line with clamp ends (other ends available)**
- **install vertically or horizontally with our eccentric check (call for availability)**
- **features a full size flow plate with a long bushing to minimize stem wear**
- **features a special design to prevent even low pressure leak through**



working pressures:

- **minimum opening pressure 0.7 to 1.4 psi**
- **maximum operating pressure 145 psi**
- **operating temperature range of 0°F to 280°F**



dimensions				B45MP
od tube size	A	B	C	D
1"	.874"	1.988"	1.654	2.322
1½"	1.374"	1.988"	1.654	2.322
2"	1.874"	2.519"	1.654	2.322
2½"	2.374"	3.051"	1.654	2.322
3"	2.870"	3.582"	1.654	2.322
4"	3.834"	4.682"	2.975	2.875

*4" valve uses bolted construction.

materials list				
item #	part name	material	qty.	
1	upper body (clamp)	CF-8M	1	
2*	o ring	Viton®	2	
3	lower clamp half	CF8	1	
4	upper clamp half	CF8	1	
5	flow plate	CF-8M	1	
6*	spring	304	1	
7	stem	CF-8M	1	
8*	o ring	Viton®	1	
9	lower body	CF-8M	1	
10	eye bolt	304	1	
11	wing nut	CF8	1	
12	rivet pins	304	2	

*Included in repair kit.

4" valve uses bolted construction.



International Association of Food Industry Suppliers

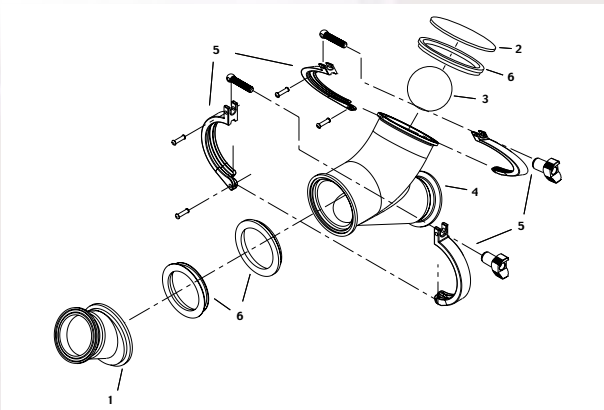
check valve



Get control with **Bradford's** ball check valves. Our rugged valves are designed to prevent reverse flow in systems moving liquid products.

When liquid is pushed into the outlet, a check ball is forced up into the branch of the valve allowing full fluid flow. When the liquid stops, equalizing the pressure, the ball drops back into the inlet, preventing backflow. Should reverse flow occur, the opposing pressure will cause the ball to seat firmly against the inlet preventing leakage.

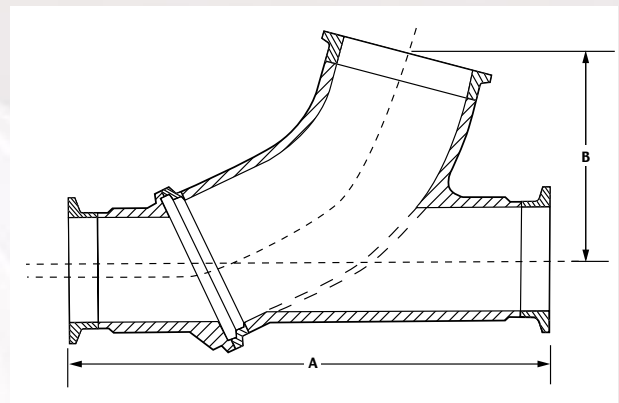
- two piece construction for easier alignment during installation
- quick disconnect from any line with clamp ends (other ends available)
- polished I/D and O/D to 3A standards
- all metal contact surfaces of 316L stainless steel construction
- sizes from 1½" – 3"
- meets 3A and USDA requirements
- air blow check valve can be added



materials list

item #	part name	material	qty.
1	seat body (clamp)	CF-3M	1
2	cap	316L	1
3*	ball	PTFE	1
4	angle body	CF-3M	1
5	body clamp	CF8	1
6*	body gasket (assembly)	Buna-N/CF-3M	1
7	cap clamp	CF8	1
8*	cap gasket	Buna-N	1

*Included in repair kit.
Other materials are available for balls and gaskets.



dimensions

od tube size	A	B	weight	B45BY				
				body	cap	clamp	gasket	ball
1½"	7.50"	2.925"	4.80 lbs	1 ½"	2 ½"	2 ½"	2 ½"	2.110"
2"	8.50"	3.857"	6.30 lbs	2"	3"	3"	3"	2.625"
2½"	10.00"	4.393"	10.20 lbs	2 ½"	4"	4"	4"	3.312"
3"	11.50"	5.30"	11.50 lbs	3"	4 ½"	4 ½"	4 ½"	4.250"

800.789.1718

check valve

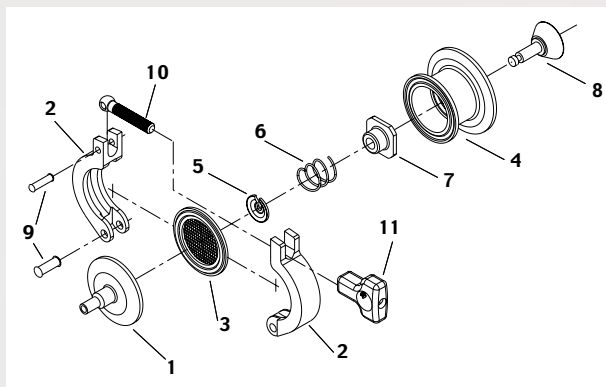
Bradford's air blow check valve is designed to evacuate lines of product or CIP solutions helping in protecting lines against corrosion. Its fail-safe operation prevents backflow with simple air-to-open spring-to-close mechanism.

Attach and use with Bradford's sanitary ball check valves or any quick disconnect clamp configuration. This allows for quick assembly and disassembly for replacing filter media, cleaning or inspection.

- designed to evacuate lines of product or CIP solutions
- fail-safe operation – backflow prevented by simple air to open, spring to close operation
- clamp connections allow quick disassembly and assembly for replacing filter media, cleaning or inspection
- 316L stainless steel offered with EPDM or Viton® (call for availability) stem and gasket



- sizes from 1½" – 4½"
- conforms to 3A standards for filtration of air entering tanks or pipelines



materials list

item #	part name	material	qty.
1	adapter (air line quick coupler)	304	1
1	adapter (rubber hose barb)	304	1
1	adapter (thermometer cap)	304	1
2	clamp	CF8	1
3	perforated disc	EPDM/Viton®	1
4	valve body	CF-8M	1
5	spring retainer	304	1
6	spring	304	1
7	stem guide	nylon	1
8	stem	EPDM/Viton®	1
9	clamp rivet pins	304	2
10	clamp eye bolt	304	1
11	clamp cross-hole wingnut	CFB	1

Stem is stocked in EPDM, call for availability of Viton®.

Note: The air blow check valve must be used with a filter disc, available in packages of 50.

(*B16AC adapter shown)



International Association of Food Industry Suppliers

air blow check valve

adapter air line quick coupler			B16AC
od tube size	A	length	
1½"	1.984"	1.25"	
industrial coupling			

adapter rubber hose barb				B16BC
od tube size	OD	A	length	
1½"	1.50"	1.984"	3.00"	

For use on ball check valves:

1½" ball check valve uses 2½" air blow valve

2" ball check valve uses 3" air blow valve

2½" ball check valve uses 4" air blow valve

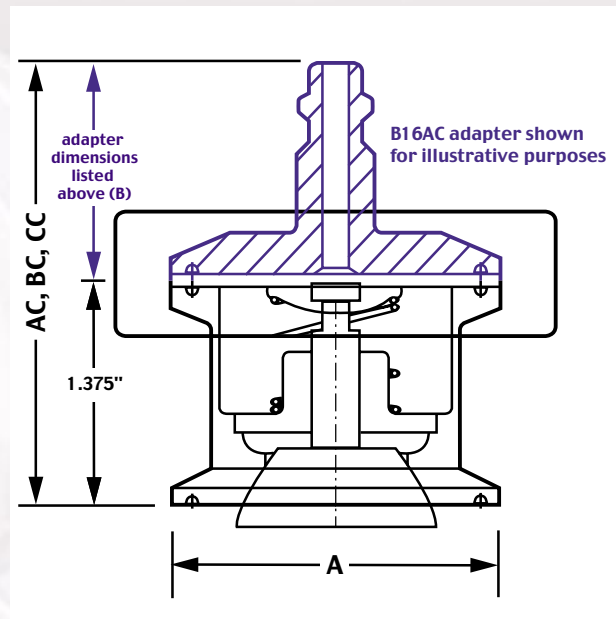
3" ball check valve uses 4½" air blow valve

Air blow check valve must be used with special filter disc to conform to 3A standards.

Sold separately in packs of 50.

adapter thermometer cap			B16CC
od tube size	A	length	
1½"	1.94"	1.625"	
¾" NPT			

length & diameter (valve w/adapter)				B45AB
od tube size	A	AC	BC	CC
1½"	1.984"	2.625"	4.38"	3.00"
2"	2.516"	2.625"	4.38"	3.00"
2½"	3.047"	2.625"	4.38"	3.00"
3"	3.579"	2.625"	4.38"	3.00"
4"	4.682"	2.625"	4.38"	3.00"
4½"	5.125"	2.625"	4.38"	3.00"



get connected with

Bradford Company, Inc.



clamps

end caps

hangers

ferrules

elbows

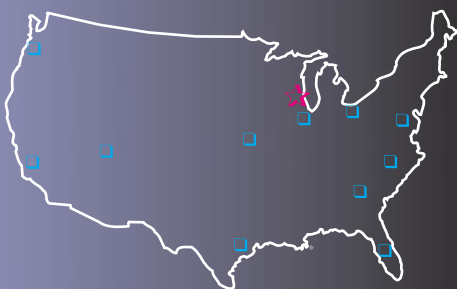
tees

laterals

reducers

valves

gaskets



multiple locations to
serve you more efficiently

Bradford Company, Inc.

PO Box 33 • Elm Grove, WI 53122-0033

262.790.0101 • 800.789.1718

fax 262.790.1046

www.bradfordfittings.com



fisa
food industry
suppliers
association



International Association
Food Industry Suppliers

