

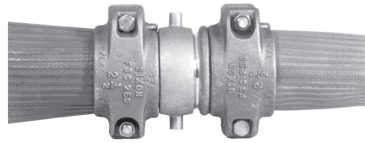
## Flat Seal Coupling Assemblies

Flat seal couplings are for lay flat hose with a wall thickness between 5/64" - 3/16". Flat seal couplings are designed for use with Flat seal clamps only. Can only be used with single jacket fire hose. NPSM and NST coupling gaskets are available on page 190. Flat seal couplings for cam and groove are available on page 44.

**Note:** \* Torque values for clamps are based on "dry bolts".  
The use of lubricants on bolts will adversely effect clamp performance.

### Complete

Price includes clamps



Aluminum with brass swivel nut  
**NPSM**

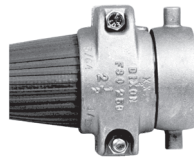
Size	Part #	Price / Each
1½"	<b>FS150</b>	<b>\$74.50</b>
2"	<b>FS200</b>	<b>89.00</b>
2½"	<b>FS250</b>	<b>106.00</b>
3"	<b>FS300</b>	<b>106.00</b>

Aluminum with brass swivel nut  
**NST (NH)**

Size	Part #	Price / Each
1½"	<b>FS150F</b>	<b>\$85.00</b>
2½"	<b>FS250F</b>	<b>118.00</b>

### Female

Price includes clamp



Aluminum with brass swivel nut  
**NPSM**

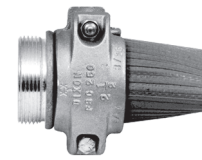
Size	Part #	Price / Each
1½"	<b>FSF150</b>	<b>\$38.00</b>
2"	<b>FSF200</b>	<b>47.00</b>
2½"	<b>FSF250</b>	<b>59.00</b>
3"	<b>FSF300</b>	<b>59.00</b>

Aluminum with brass swivel nut  
**NST (NH)**

Size	Part #	Price / Each
1½"	<b>FSF150F</b>	<b>\$47.00</b>
2½"	<b>FSF250F</b>	<b>65.00</b>

### Male

Price includes clamp



Aluminum  
**NPSM**

Size	Part #	Price / Each
1½"	<b>FSM150</b>	<b>\$36.70</b>
2"	<b>FSM200</b>	<b>42.00</b>
2½"	<b>FSM250</b>	<b>47.00</b>
3"	<b>FSM300</b>	<b>47.00</b>

Aluminum  
**NST (NH)**

Size	Part #	Price / Each
1½"	<b>FSM150F</b>	<b>\$38.00</b>
2½"	<b>FSM250F</b>	<b>53.00</b>

Maximum recommended torque 40 ft./lbs.\*

Brass with brass swivel nut  
**NPSM**

Size	Part #	Price / Each
1½"	<b>BFS150</b>	<b>\$102.00</b>
2½"	<b>BFS250</b>	<b>160.00</b>

Brass with brass swivel nut  
**NST (NH)**

Size	Part #	Price / Each
1½"	<b>BFS150F</b>	<b>\$106.00</b>
2½"	<b>BFS250F</b>	<b>174.00</b>

Brass with brass swivel nut  
**NPSM**

Size	Part #	Price / Each
1½"	<b>BFSF150</b>	<b>\$55.00</b>
2½"	<b>BFSF250</b>	<b>82.00</b>

Brass with brass swivel nut  
**NST (NH)**

Size	Part #	Price / Each
1½"	<b>BFSF150F</b>	<b>\$59.00</b>
2½"	<b>BFSF250F</b>	<b>92.00</b>

Brass  
**NPSM**

Size	Part #	Price / Each
1½"	<b>BFSM150</b>	<b>\$47.00</b>
2½"	<b>BFSM250</b>	<b>78.00</b>

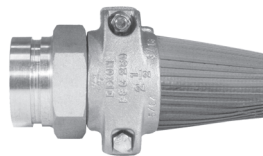
Brass  
**NST (NH)**

Size	Part #	Price / Each
1½"	<b>BFSM150F</b>	<b>\$47.00</b>
2½"	<b>BFSM250F</b>	<b>82.00</b>

Nuts and bolts are 316 stainless steel. Maximum recommended torque 20 ft./lbs.\*

**Aluminum Grooved End \*\***  
Price includes clamp

Size	Part #	Price/E
1½"	---	---
2"	---	---
2½"	<b>FSM250V</b>	<b>\$45.00</b>
3"	---	---
4"	<b>FSM400V</b>	<b>120.00</b>
6"	<b>FSM600V</b>	<b>180.00</b>

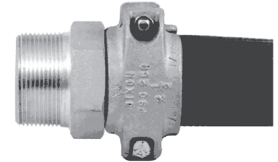


4" and 6" do not have hex

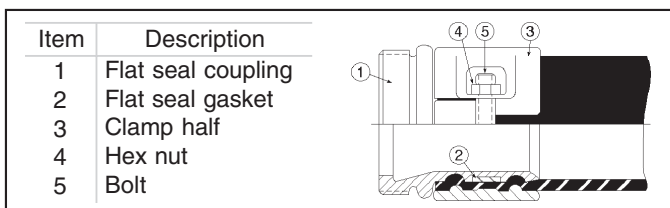
\*\* See pages 411 - 413 for mating clamps and fittings.

**Aluminum NPT**  
Price includes clamp

Size	Part #	Price/E
1½"	<b>FSM150T</b>	<b>\$39.00</b>
2"	<b>FSM200T</b>	<b>41.00</b>
2½"	<b>FSM250T</b>	<b>48.00</b>
3"	<b>FSM300T</b>	<b>63.00</b>
4"	<b>FSM400T</b>	<b>171.00</b>
6"	<b>FSM600T</b>	<b>275.00</b>



4" and 6" do not have hex

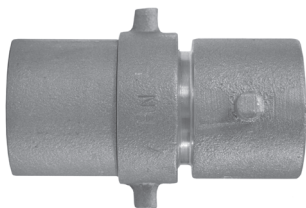


### Flat Seal Gaskets

Size	Part #	Price/E
1½"	<b>FSG150</b>	<b>\$1.10</b>
2"	<b>FSG200</b>	<b>1.10</b>
2½"	<b>FSG250</b>	<b>1.10</b>
3"	<b>FSG300</b>	<b>1.40</b>
4"	<b>FSG400</b>	<b>1.95</b>

## Expansion Ring Fire Hose Couplings

Complete Set

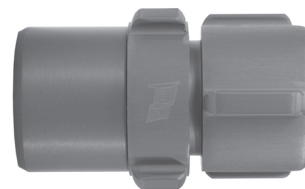


**Brass Pin Lug**

Rack Hose  
(No Lugs on Male)

Size	Thread	Bowl	Part #	Price / Each
1½"	NPSH	1-11/16"	<b>RH15168~</b>	<b>\$44.10</b>
1½"	NST (NH)	1-11/16"	<b>RH15168F</b>	<b>44.10</b>

Complete Set  
Hardcoated finish



- **Special tooling is required to attach these couplings to hose.**
- All couplings come complete with expansion rings, swivel and tail washers.

## Aluminum Rocker Lug†

Single Jacket

Size	Thread	Bowl	Part #	Price / Each
1½"	NPSH	1-3/4"	<b>S15175</b>	<b>\$62.80</b>
1½"	NPSH	1-13/16"	<b>S15181~</b>	<b>62.80</b>
2½"	NPSH	2-13/16"	<b>S25281</b>	<b>144.35</b>
2½"	NPSH	2-7/8"	<b>S25287~</b>	<b>POR</b>
1½"	NST (NH)	1-3/4"	<b>S15175F</b>	<b>\$62.80</b>
1½"	NST (NH)	1-13/16"	<b>S15181F</b>	<b>62.80</b>
2½"	NST (NH)	2-13/16"	<b>S25281F</b>	<b>132.30</b>
2½"	NST (NH)	2-7/8"	<b>S25287F</b>	<b>144.35</b>

Single Jacket

Size	Thread	Bowl	Part #	Price / Each
1½"	NPSH	1-3/4"	<b>S16175</b>	<b>\$42.95</b>
1½"	NPSH	1-13/16"	<b>S16181</b>	<b>42.95</b>
2½"	NPSH	2-13/16"	<b>S26281</b>	<b>76.30</b>
2½"	NPSH	2-7/8"	---	---
1½"	NST (NH)	1-3/4"	<b>S16175F</b>	<b>\$42.95</b>
1½"	NST (NH)	1-13/16"	<b>S16181F</b>	<b>42.95</b>
2½"	NST (NH)	2-13/16"	<b>S26281F</b>	<b>76.30</b>
2½"	NST (NH)	2-7/8"	---	---

Double Jacket

Size	Thread	Bowl	Part #	Price / Each
1½"	NPSH	1-15/16"	<b>D15193</b>	<b>\$67.45</b>
---	---	---	---	---
2½"	NPSH	3"	<b>D253~</b>	<b>144.40</b>
1½"	NST (NH)	1-15/16"	<b>D15193F</b>	<b>\$67.45</b>
---	---	---	---	---
2½"	NST (NH)	3"	<b>D253F</b>	<b>144.40</b>

Double Jacket

Size	Thread	Bowl	Part #	Price / Each
1½"	NPSH	1-15/16"	<b>D16193</b>	<b>\$42.95</b>
1½"	NPSH	2-1/16"	<b>D16206</b>	<b>42.95</b>
2½"	NPSH	3"	<b>D263</b>	<b>78.95</b>
1½"	NST (NH)	1-15/16"	<b>D16193F</b>	<b>\$42.95</b>
1½"	NST (NH)	2-1/16"	<b>D16206F</b>	<b>42.95</b>
2½"	NST (NH)	3"	<b>D263F</b>	<b>78.95</b>

† 3 rocker lugs on male and female

For females or males only, consult Dixon for price and availability.

## Expansion Rings



- 85/15 red brass

O.D.	Length	Part #	Price / Each
1-1/2"	7/8"	<b>ER1587</b>	<b>\$5.95</b>
1-1/2"	1"	<b>ER1510</b>	<b>6.30</b>
1-1/2"	1-1/4"	<b>ER15125</b>	<b>6.50</b>
2-7/16"	1-1/4"	<b>ER27125</b>	<b>9.70</b>
2-7/16"	1-1/2"	<b>ER27150</b>	<b>9.80</b>

# Fire Hose Coupling Washers

## Swivel Washers

• Buna N

I.D.	O.D.	Thickness	Part #	Price / Each
1-1/16"	1-7/16"	1/8"	<b>SW100F</b>	\$1.70
1-9/16"	2-1/16"	1/8"	<b>SW150</b>	1.70
2-9/16"	3-3/16"	3/16"	<b>SW250</b>	2.80
3-1/16"	3-3/4"	1/4"	<b>SW300F</b>	4.20
4-1/6"	5-1/8"	1/4"	<b>SW400F</b>	8.00
4-9/16"	5-7/8"	1/4"	<b>SW450F</b>	9.10
5-1/16"	6-3/8"	1/4"	<b>SW500F</b>	11.50
6-1/16"	7-1/8"	1/4"	<b>SW600F</b>	12.50



## Tail Washers

• Buna N

I.D.	O.D.	Thickness	Part #	Price / Each
1-9/16"	1-3/4"	3/16"	<b>RTW150</b>	\$1.60
1-9/16"	1-15/16"	3/16"	<b>STW150</b>	1.70
1-5/8"	2-1/8"	3/16"	<b>DTW150</b>	1.60
2-9/16"	3"	1/4"	<b>STW250</b>	2.80
2-5/8"	3-1/4"	1/4"	<b>DTW250</b>	2.60

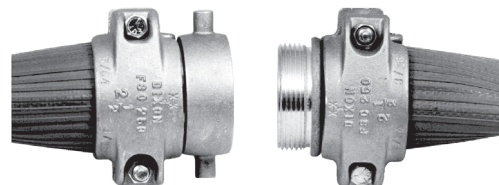


# Coupling Options

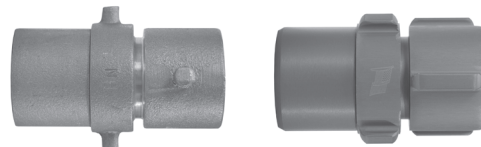
Coupling options include, but are not limited to, expansion ring couplings and field reattachable couplings (Flat Seal). Multiple thread designations, materials and lug types are available.

Thread	Material	Lug type	Coupling type	Part # suffix *
NST (NH)	aluminum	Rocker	Expansion Ring	<b>RAF</b>
NST (NH)	brass	Rocker	Expansion Ring	<b>RBF</b>
NST (NH)	brass	Pin	Expansion Ring	<b>PBF</b>
NPSH	aluminum	Rocker	Expansion Ring	<b>RAS</b>
NST (NH)	alum. shank, brass nut	Pin	Flat Seal	<b>AFF</b>
NST (NH)	brass shank, brass nut	Pin	Flat Seal	<b>BFF</b>
NPSH	alum. shank, brass nut	Pin	Flat Seal	<b>AFS</b>
NPSH	brass shank, brass nut	Pin	Flat Seal	<b>BFS</b>

## Field Reattachable Couplings (Flat Seal)



## Expansion Ring Couplings (Permanently Attached)



The following hoses are available with the couplings styles listed above:

- All Synthetic Mill Hose, page 334
- 300# Single Jacket All Polyester Fire Hose, page 335
- 500# Single Jacket All Polyester Fire Hose, page 335
- 800# Double Jacket All Polyester Fire Hose, page 336 \*\*
- 500# All Polyester Rack Hose, page 337 \*\*
- Red Elastomer Covered Fire Hose, page 340
- 400# Nitrile Covered Fire Hose - Light Duty - red, page 339
- 500# Nitrile Covered Fire Hose - Light Duty - red, page 339
- Nitrile Covered Fire Hose - Heavy Duty - yellow, page 340

\* Suffix extension applies to **coupled part #'s only**.

\*\* Double jacket hoses and rack hoses are **not** recommended for use with field reattachable couplings (Flat Seal).



## All Synthetic Mill Hose

Ideal for open end discharge applications. **Not intended for fire fighting service.**

**Outer construction:**

Single jacket, all synthetic

**Tube construction:**

Black, extruded synthetic rubber

Consult the factory for pricing and availability for any of the following features:

- 25' and 75' lengths
- Other threads and configurations
- Hoses coupled with field reattachable couplings (Flat Seal)

Rated Pressure: **250 PSI**

Working Pressure: **112 PSI**

**Uncoupled**



Uncoupled

Size	Bowl	Length	Part #	Price / Each
1"	1-1/4"	50'	<b>M10-50UC</b>	<b>\$105.40</b>
1"	1-1/4"	100'	<b>M10-100UC</b>	<b>210.80</b>
1½"	1-11/16"	25'	<b>M15-25UC</b>	<b>58.30</b>
1½"	1-11/16"	50'	<b>M15-50UC</b>	<b>116.60</b>
1½"	1-11/16"	100'	<b>M15-100UC</b>	<b>233.20</b>
2"	2-3/8"	25'	<b>M20-25UC</b>	<b>73.50</b>
2"	2-3/8"	50'	<b>M20-50UC</b>	<b>147.00</b>
2"	2-3/8"	100'	<b>M20-100UC</b>	<b>294.00</b>
2½"	2-11/16"	25'	<b>M25-25UC</b>	<b>102.40</b>
2½"	2-11/16"	50'	<b>M25-50UC</b>	<b>204.80</b>
2½"	2-11/16"	100'	<b>M25-100UC</b>	<b>409.60</b>
3"	3-3/8"	25'	<b>M30-25UC</b>	<b>120.75</b>
3"	3-3/8"	50'	<b>M30-50UC</b>	<b>241.50</b>
3"	3-3/8"	100'	<b>M30-100UC</b>	<b>483.00</b>
4"	4-3/8"	25'	<b>M40-25UC</b>	<b>186.90</b>
4"	4-3/8"	50'	<b>M40-50UC</b>	<b>373.80</b>
4"	4-3/8"	100'	<b>M40-100UC</b>	<b>747.60</b>
6"	6-3/8"	25'	<b>M60-25UC</b>	<b>487.20</b>
6"	6-3/8"	50'	<b>M60-50UC</b>	<b>974.40</b>

**Coupled with Female and Male Expansion Ring Couplings**



Coupled

New Sizes

Size	Length	Part #	Rocker Lug Aluminum	Rocker Lug Brass	Pin Lug Brass	Rocker Lug Aluminum
			NST (NH) <b>RAF</b>	NST (NH) <b>RBF</b>	NST (NH) <b>PBF</b>	NPSH <b>RAS</b>
1½"	50'	<b>M15-50</b>	<b>\$189.00</b>	<b>\$204.75</b>	<b>\$204.75</b>	<b>\$189.00</b>
1½"	100'	<b>M15100</b>	<b>299.25</b>	<b>315.00 ~</b>	<b>315.00 ~</b>	<b>299.25</b>
2"	50'	<b>M20-50</b>	<b>283.50</b>	<b>309.75 ~</b>	<b>---</b>	<b>283.50</b>
2"	100'	<b>M20100</b>	<b>435.75 ~</b>	<b>462.00 ~</b>	<b>---</b>	<b>435.75</b>
2½"	25'	<b>M25-25</b>	<b>211.20</b>	<b>---</b>	<b>---</b>	<b>---</b>
2½"	50'	<b>M25-50</b>	<b>315.00</b>	<b>357.00 ~</b>	<b>357.00 ~</b>	<b>315.00 ~</b>
2½"	100'	<b>M25100</b>	<b>541.80</b>	<b>583.80 ~</b>	<b>583.80 ~</b>	<b>541.80 ~</b>

## 500# Single Jacket Mine Fire Hose - MSHA Approved

Approved by MSHA - (Mine Safety and Health Administration), for all mine fire protection applications.

**Outer construction:**

Single jacket, flame resistant synthetic

**Tube construction:**

Black flame resistant Neoprene rubber

Consult the factory for pricing and availability for any of the following features:

- 25' and 100' lengths
- Other threads and configurations



Proof Pressure: **500 PSI**

Service Test Pressure: **250 PSI**

Working Pressure: **225 PSI**

**Coupled with Female and Male Expansion Ring Couplings**

Size	Length	Part #	Rocker Lug Aluminum	Rocker Lug Aluminum
			NST (NH) <b>RAF</b>	NPSH <b>RAS</b>
1½"	50'	<b>SM515W50</b>	<b>\$278.25</b>	<b>POR</b>
2"	50'	<b>SM520W50</b>	<b>396.70</b>	<b>POR</b>

## 300# Single Jacket All Polyester Fire Hose

**Outer construction:**  
Single jacket, all polyester  
**Tube construction:**  
EPDM Rubber lining

Consult the factory for pricing and availability for any of the following features:

- 25' and 75' lengths
- U/L labeled hoses
- Other threads and configurations
- Hoses coupled with field reattachable couplings (*Flat Seal*)

Proof Pressure: **300 PSI**  
Service Test Pressure: **150 PSI**  
Working Pressure: **135 PSI**

### Uncoupled

Size	Bowl	Length	Part #	Price / Each
1½"	1-13/16"	50'	<b>A315-50UC</b>	<b>\$139.55</b>
1½"	1-13/16"	100'	<b>A315-100UC</b>	<b>279.10</b>
2½"	2-13/16"	50'	<b>A325-50UC</b>	<b>245.40</b>
2½"	2-13/16"	100'	<b>A325-100UC</b>	<b>490.80</b>



Uncoupled

### Coupled with Female and Male Expansion Ring Couplings

Size	Length	Part #	Rocker Lug Aluminum NST (NH) RAF	Rocker Lug Brass NST (NH) RBF	Pin Lug Brass NST (NH) PBF	Rocker Lug Aluminum NPSH RAS
1½"	50'	<b>A315-50</b>	<b>\$195.85</b>	<b>\$202.75</b>	<b>\$202.75</b>	<b>\$195.85</b>
1½"	100'	<b>A315100</b>	<b>326.35</b>	<b>340.00</b>	<b>340.00</b>	<b>326.35</b>
2½"	50'	<b>A325-50</b>	<b>336.00</b>	<b>366.40</b>	<b>366.40</b>	<b>336.00</b>
2½"	100'	<b>A325100</b>	<b>577.50</b>	<b>610.00</b>	<b>610.00</b>	<b>577.50</b>



Coupled

## 500# Single Jacket All Polyester Fire Hose

**Outer construction:**  
Single jacket, all polyester  
**Tube construction:**  
EPDM Rubber lining

Consult the factory for pricing and availability for any of the following features:

- 75' lengths
- U/L labeled hoses
- Other threads and configurations
- Hoses coupled with field reattachable couplings (*Flat Seal*)

Proof Pressure **500 PSI**  
Service Test Pressure **250 PSI**  
Working Pressure **225 PSI**

### Uncoupled

Size	Bowl	Length	Part #	Price / Each
1½"	1-13/16"	50'	<b>A515-50UC</b>	<b>\$152.50</b>
1½"	1-13/16"	100'	<b>A515-100UC</b>	<b>305.00</b>
2½"	2-13/16"	50'	<b>A525-50UC</b>	<b>257.50</b>
2½"	2-13/16"	100'	<b>A525-100UC</b>	<b>515.00</b>



Uncoupled

### Coupled with Female and Male Expansion Ring Couplings

Size	Length	Part #	Rocker Lug Aluminum NST (NH) RAF	Rocker Lug Brass NST (NH) RBF	Pin Lug Brass NST (NH) PBF	Rocker Lug Aluminum NPSH RAS
1½"	25'	<b>A515-25</b>	<b>\$135.00</b>	---	---	---
1½"	50'	<b>A515-50</b>	<b>208.15</b>	<b>\$219.45</b>	<b>\$219.45</b>	<b>\$208.15</b>
1½"	100'	<b>A515100</b>	<b>350.00</b>	<b>365.20</b>	<b>365.20</b>	<b>350.00 ~</b>
2½"	25'	<b>A525-25</b>	<b>230.40</b>	---	---	---
2½"	50'	<b>A525-50</b>	<b>352.50</b>	<b>384.50</b>	<b>384.50</b>	<b>352.50</b>
2½"	100'	<b>A525100</b>	<b>627.95</b>	<b>660.85 ~</b>	<b>660.85 ~</b>	<b>627.95 ~</b>



Coupled

J

## 800# Double Jacket All Polyester Fire Hose

**Outer construction:**  
Double jacket, all polyester  
**Tube construction:**  
EPDM Rubber lining

Consult the factory for pricing and availability for any of the following features:  
• 75' lengths  
• Other threads and configurations



Proof Pressure: **800 PSI**  
Service Test Pressure: **400 PSI**  
Working Pressure: **360 PSI**

### Coupled with Female and Male Expansion Ring Couplings \*

	Size	Length	Part #	Rocker Lug Aluminum NST (NH) RAF	Rocker Lug Brass NST (NH) RBF	Pin Lug Brass NST (NH) PBF	Rocker Lug Aluminum NPSH RAS
New Sizes	1½"	25'	<b>D815-25</b>	<b>\$183.00</b>	---	---	---
	1½"	50'	<b>D815-50</b>	<b>280.55</b>	<b>\$299.85</b>	<b>\$299.85</b>	<b>\$280.55</b>
	1½"	100'	<b>D815100</b>	<b>517.90 ~</b>	<b>537.25 ~</b>	<b>537.25 ~</b>	<b>517.90</b>
New Sizes	2½"	25'	<b>D825-25</b>	<b>285.00</b>	---	---	---
	2½"	50'	<b>D825-50</b>	<b>466.40</b>	<b>503.50</b>	<b>503.50</b>	<b>466.40</b>
	2½"	100'	<b>D825100</b>	<b>821.50</b>	<b>874.50 ~</b>	<b>874.50</b>	<b>821.50 ~</b>

\* Double jacket hoses are **not** recommended for use with field reattachable couplings (*Flat Seal*).

## 800# Double Jacket All Polyester Fire Hose - Yellow Impregnated

**Outer construction:**  
Double jacket, all polyester  
**Tube construction:**  
Black extruded synthetic rubber  
**Impregnation:**  
Yellow

Consult the factory for pricing and availability for any of the following features:  
• Other lengths, threads, colors and configurations



Proof Pressure: **800 PSI**  
Service Test Pressure: **400 PSI**  
Working Pressure: **360 PSI**

### Coupled with Female and Male Expansion Ring Couplings \*

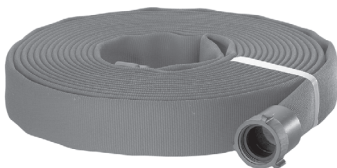
	Size	Length	Part #	Rocker Lug Aluminum NST (NH) RAF
	1½"	50'	<b>D815Y50</b>	<b>\$294.45</b>
	2½"	50'	<b>D825Y50</b>	<b>479.85</b>

\* Double jacket hoses are **not** recommended for use with field reattachable couplings (*Flat Seal*).

## Blue Double Jacket Potable Water Hose

**Outer construction:**  
Double jacket, all polyester  
**Tube construction:**  
Thermoplastic  
**Impregnation:**  
Blue (color coded for water)

• NSF approved materials for potable water



Proof Pressure: **600 PSI**  
Service Test Pressure: **300 PSI**  
Working Pressure: **270 PSI**

### Coupled with Female and Male Expansion Ring Couplings

	Size	Length	Part #	Rocker Lug Brass NPSH RBS
	1½"	50'	<b>PW615B50</b>	<b>\$420.60</b>
	2½"	50'	<b>PW625B50</b>	<b>700.00</b>

## 500# All Polyester Rack Hose

**Outer construction:**  
Single jacket, all polyester  
**Tube construction:**  
EPDM rubber lining

- **Not** to be used for washdown

Proof Pressure: **500 PSI**  
Service Test Pressure: **250 PSI**  
Working Pressure: **225 PSI**

**Coupled with Female and Male Expansion Ring Couplings \***

Size	Length	Part #	Rocker Lug Aluminum NST (NH) RAF	Rocker Lug Brass NST (NH) RBF	Pin Lug Brass NST (NH) PBF	Pin Lug Brass NPSH PBS
1½"	50'	<b>R515-50</b>	\$135.55	\$148.15	\$148.15	\$148.15
1½"	75'	<b>R515-75</b>	184.05 ~	196.65 ~	---	---
1½"	100'	<b>R515100</b>	232.55	245.15 ~	245.15 ~	POR ~



\* Rack hose couplings have no lugs on the males.  
Rack hoses are **not** recommended for use with field reattachable couplings (*Flat Seal*).

## 500# All Polyester Rack Hose - UL Labeled

**Outer construction:**  
Single jacket, all polyester  
**Tube construction:**  
Black extruded synthetic rubber

Proof Pressure: **500 PSI**  
Service Test Pressure: **250 PSI**  
Working Pressure: **225 PSI**

**Coupled with Female and Male Expansion Ring Couplings \***

Size	Length	Part #	Rocker Lug Brass NST (NH) RBF
1½"	50'	<b>R515U50</b>	\$173.00
1½"	100'	<b>R515U100</b>	296.75



\* Rack hose couplings have no lugs on the males.  
Rack hoses are **not** recommended for use with field reattachable couplings (*Flat Seal*).

## Forestry Fire Hose - Non Weeping

**Outer construction:**  
Single jacket, synthetic  
**Tube construction:**  
Thermoplastic  
**Impregnation:**  
Yellow

*Consult the factory for pricing and availability for any of the following features:*

- 25' lengths
- Other threads and configurations

Proof Pressure **600 PSI**  
Service Test Pressure **300 PSI**  
Working Pressure **270 PSI**

**Coupled with Female and Male Expansion Ring Couplings**

Size	Length	Part #	Rocker Lug Aluminum NST (NH) RAF	Rocker Lug Aluminum NPSH RAS
1"	50'	<b>NF610Y50</b>	---	\$230.10
1"	100'	<b>NF610Y100</b>	---	404.20
1½"	50'	<b>NF615Y50</b>	\$292.20	---
1½"	100'	<b>NF615Y100</b>	509.10	---



J

# NEW Forestry Mop Up Hose

Forest fire applications include mop-up, low volume hand lines, filling pump cans, supplying sprinklers and remote fire line protection. 50' coil diameter is 9"



**Outer construction:**  
Single jacket, synthetic  
**Tube construction:**  
Thermoplastic  
**Impregnation:**  
Yellow

*Consult the factory for pricing and availability for any of the following features:*

- Other threads and configurations

Proof Pressure **300 PSI**  
Service Test Pressure **150 PSI**  
Working Pressure **135 PSI**

**Coupled with Female and Male brass ferrule type garden hose couplings**

Size	Length	Part #	Price / Each
5/8"	50'	<b>NF306Y50GHT</b>	<b>\$89.60</b>
3/4"	50'	<b>NF307Y50GHT</b>	<b>97.00</b>

## Chemical Booster Fire Hose



Coupled with female and male **NST (NH)** thread, hole type, chromed brass couplings. The vertical braid construction and red ozone resistant outer cover is designed to withstand the weathering and abrasion associated with severe service.  
*See page 351 for hole type spanner wrench.*

*Not all configurations are stocked*  
Consult the factory for availability

**#800 Working Pressure**

Size	Length	Part #	Price / Each
3/4"	100'	<b>80B07-100HCF~</b>	<b>\$1161.65</b>
1"	100'	<b>80B10-100HCF~</b>	<b>1498.60</b>

J



### 400# Nitrile Covered Fire Hose - Light Duty - Red

**Outer construction:**

Thin ribbed nitrile

**Tube construction:**

Nitrile

Proof Pressure: **400 PSI**

Service Test Pressure: **200 PSI**

Working Pressure: **180 PSI**

- Synthetic rubber compound specially formulated for flexibility, as well as abrasion and chemical resistance. Ribbed for hose protection and easy handling.
- Ideal for industrial and construction washdown and discharge applications.

Consult the factory for pricing and availability for any of the following features:

- Hoses coupled with field reattachable couplings (*Flat Seal*).

**Uncoupled**

Size	Bowl	Length	Part #	Price / Each
2"	2-3/16"	50'	<b>H420R50UC</b>	<b>\$346.45</b>



Uncoupled

**Coupled with Female and Male Expansion Ring Couplings**

Size	Length	Part #	Rocker Lug Brass NPSH RBS
2"	50'	<b>H420R50</b>	<b>\$503.40</b>



Coupled

### 500# Nitrile Covered Fire Hose - Light Duty - Red

**Outer construction:**

Thin ribbed nitrile

**Tube construction:**

Nitrile

Proof Pressure: **500 PSI**

Service Test Pressure: **250 PSI**

Working Pressure: **225 PSI**

Consult the factory for pricing and availability for any of the following features:

- 25' lengths
- Other colors, threads and configurations
- Hoses coupled with field reattachable couplings (*Flat Seal*).
- Ideal for industrial and construction washdown and discharge applications.

**Uncoupled**

Size	Bowl	Length	Part #	Price / Each
1½"	1-13/16"	50'	<b>H515R50UC</b>	<b>\$320.25</b>
2½"	2-13/16"	50'	<b>H525R50UC</b>	<b>430.50</b>



Uncoupled

**Coupled with Female and Male Expansion Ring Couplings**

Size	Length	Part #	Rocker Lug Aluminum NST (NH) RAF	Rocker Lug Brass NST (NH) RBF	Pin Lug Brass NST (NH) PBF	Rocker Lug Aluminum NPSH RAS
1½"	50'	<b>H515R50</b>	<b>\$378.00</b>	<b>\$383.25</b>	<b>\$383.25 ~</b>	<b>\$378.00</b>
2½"	50'	<b>H525R50</b>	<b>525.00 ~</b>	<b>556.50 ~</b>	<b>556.50</b>	<b>525.00 ~</b>



Coupled



## Nitrile Covered Fire Hose - Heavy Duty - Yellow

**Outer construction:**

Thick ribbed nitrile

**Tube construction:**

Nitrile

- Extruded interlocking matrix fire hose with 100% synthetic circular woven polyester reinforcement.
- Ideal for heavy-duty washdown, refineries and power plants.
- Heavy ribbed for severe service

**Proof Pressure:**

1½" - 3" - **600 PSI**

4" - **400 PSI**

6" - **300 PSI**

**Service Test Pressure:**

1½" - 3" - **300 PSI**

4" - **200 PSI**

6" - **150 PSI**

**Working Pressure:**

1½" - 3" - **270 PSI**

4" - **180 PSI**

6" - **135 PSI**

Consult the factory for pricing and availability for any of the following features:

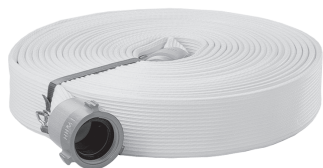
- 25' lengths
- Other colors, threads and configurations
- Hoses coupled with field reattachable couplings (*Flat Seal*)



Uncoupled

**Uncoupled**

Size	Bowl	Length	Part #	Price / Each
1½"	1-13/16"	50'	<b>H615Y50UC</b>	<b>\$346.50</b>
2"	2-3/16"	50'	<b>H620Y50UC</b>	<b>503.50</b>
2½"	2-13/16"	50'	<b>H625Y50UC~</b>	<b>583.00</b>
3"	3-5/16"	50'	<b>H630Y50UC</b>	<b>667.80</b>
4"	4-5/16"	50'	<b>H440Y50UC~</b>	<b>985.80</b>
6"	6-5/16"	50'	<b>H360Y50UC~</b>	<b>1484.00</b>



Coupled

**Coupled with Female and Male Expansion Ring Couplings**

Size	Length	Part #	Rocker Lug Aluminum Aluminum NST (NH) <b>RAF</b>	Rocker Lug Brass Brass NST (NH) <b>RBF</b>	Pin Lug Brass Brass NST (NH) <b>PBF</b>	Rocker Lug Aluminum Aluminum NPSH <b>RAS</b>
1½"	50'	<b>H615Y50</b>	<b>\$399.00</b>	<b>\$404.25</b>	<b>\$404.25</b>	<b>\$399.00</b>
2½"	50'	<b>H625Y50</b>	<b>661.50</b>	<b>683.10 ~</b>	<b>683.10 ~</b>	<b>661.50 ~</b>

J

## Red Elastomer Covered Fire Hose

Ideal for industrial, petrochemical and HAZMAT use

**Outer construction:**

Red elastomeric polymer (urethane)

**Tube construction:**

Black extruded elastomer (urethane)

Consult the factory for pricing and availability for any of the following features:

- 25' lengths
- U/L labeled hoses
- Other threads and configurations
- Hoses coupled with field reattachable couplings (*Flat Seal*).

**Proof Pressure 500 PSI**

**Service Test Pressure 250 PSI**

**Working Pressure 235 PSI**



**Coupled with Female and Male Expansion Ring Couplings**

Size	Length	Part #	Rocker Lug Aluminum Aluminum NST (NH) <b>RAF</b>	Rocker Lug Brass Brass NST (NH) <b>RBF</b>	Rocker Lug Aluminum Aluminum NPSH <b>RAS</b>	Rocker Lug Brass Brass NPSH <b>RBS</b>
1½"	50'	<b>N515-50</b>	<b>\$385.50 ~</b>	<b>\$402.60</b>	<b>\$385.50 ~</b>	<b>\$402.60 ~</b>
1½"	100'	<b>N515100</b>	<b>723.70 ~</b>	<b>740.80 ~</b>	<b>723.70 ~</b>	<b>740.80 ~</b>

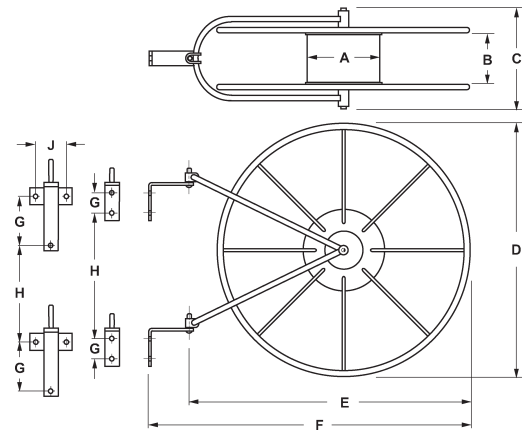
## Collar Style Hose Couplings

- For use on Rubber Soft Suction fire hose
- Re-attachable in the field
- Rocker lugs on male and female swivel
- Hardcoat aluminum finish



Hose Size	NST (NH) Thread	Part #	Price / Each
4"	4"	<b>ACT40RB40F</b>	<b>\$383.95</b>
4"	4½"	<b>ACT40RB45F</b>	<b>461.45</b>
5"	4½"	<b>ACT50RB45F</b>	<b>420.25</b>
5"	5"	<b>ACT50RB50F</b>	<b>471.65</b>

## Style V Swing Wall Reels



Hose and valve not included

- Pivot mounting allows the reel to swing to the proper angle, preventing twists and kinks
- Red enameled all-steel construction for long, dependable service life
- "Double row" design of V5, V7, V8 and V9 holds two rows of hose for maximum capacity in minimum space
- Open sides allow faster hose drying to prevent mold and mildew
- Optional pipe mounting brackets are available

### Swing Wall Reels

Hose I.D.	Part #	Hose Capacity			A	B	C	D	E	F	G	H	J	Weight lbs.	Price/Ea
		Rack	Single	Double											
1½" - 1¾"	<b>FHR-V2</b>	150'	100'	75'	8"	3"	7½"	26"	29"	33"	2"	15"	---	20	<b>\$273.05</b>
1½"	<b>FHR-V5</b>	300'	200'	150'	8"	5½"	9½"	26"	30"	34"	2"	13"	---	23	<b>283.10</b>
2" - 2½"	<b>FHR-V5</b>	150'	100'	75'	8"	5½"	9½"	26"	30"	34"	2"	13"	---	26	<b>283.10</b>
2" - 2½"	<b>FHR-V7</b>	---	200'	150'	8"	9"	13"	26"	31"	37½"	5"	13¼"	3"	32	<b>372.40</b>

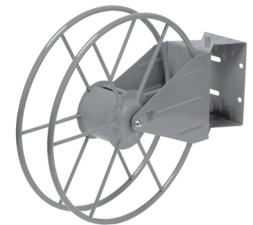
### Cover

Description	Dimensions	Part #	Price
Cover for FHR-V2 or FHR-V5	26" dia. x 8"	<b>FHR-C</b>	<b>\$158.00</b>

- Fluorescent red vinyl coated nylon with Velcro™ closures
- Printed on both sides

## Swing Type Hose Storage Reels

- Red enamel finish
- Steel construction
- 180° swing
- Small reel hub allows for more hose storage



Hose I.D.	Part #	Hose Capacity		Weight lbs.	Price / Each
		Light Weight	Rubber Lined		
1½"	<b>HSR18</b>	150'	50' - 75'	12 lbs.	<b>\$166.75</b>
1½"	<b>HSR24</b>	250'	100'	16 lbs.	<b>196.35</b>

## Swing Type Hose Storage Reel Covers

Cover for	Fits Hose Reel Diameter	Part #	Weight lbs.	Price / Each
HSR18	16" - 18"	<b>HSRC18</b>	.52 lbs.	<b>\$36.00</b>
HSR24	24"	<b>HSRC24</b>	.8 lbs.	<b>43.50</b>
---	26"	<b>HSRC26</b>	1.1 lbs.	<b>48.20</b>



## Thermoplastic Caps with Chain

This cap is designed to cover and protect male outlet threads on valves and hydrants. Prevents entry of foreign material.



Red finish

• **NOT intended to be pressurized**

Size	Thread	Part #	Price / Each
1½"	NST (NH)	<b>PFCW150F</b>	<b>\$12.95</b>
2½"	NST (NH)	<b>PFCW250F</b>	<b>13.60</b>
2½"	NST (NH)	<b>PFCW250F-C *</b>	<b>15.00</b>
3"	NST (NH)	<b>PFCW300F</b>	<b>24.60</b>
1½"	NPSH	<b>PFCW150</b>	<b>12.95</b>
2"	NPSH	<b>PFCW200</b>	<b>17.65</b>

New Sizes

\* chromed finish

This cap is designed to cover and protect male outlet threads on valves and hydrants. Prevents entry of foreign material.



Red finish

• Can be pressurized up to **300 PSI**

Size	Thread	Part #	Price / Each	Qty
2½"	NST (NH)	<b>PFC250F</b>	<b>\$29.75</b>	25

Optional Pkg./Box Quantity Shown

## Aluminum Caps and Plugs with Chain



Extruded hardcoated aluminum  
Rocker Lug

Size	Thread	Part #	Price / Each
1"	NPSH	<b>AFC100</b>	<b>\$34.30</b>
1"	NST (NH)	<b>AFC100F</b>	<b>34.30</b>
1½"	NST (NH)	<b>AFC150F</b>	<b>45.55</b>
2½"	NST (NH)	<b>AFC250F</b>	<b>66.35</b>
4"	NST (NH)	<b>AFC400F~</b>	<b>166.95</b>

New Sizes

Not all sizes are stocked.



Extruded hardcoated aluminum  
Rocker Lug

Size	Thread	Part #	Price/Ea
1½"	NST (NH)	<b>AFP150F~</b>	<b>\$69.55</b>
2½"	NST (NH)	<b>AFP250F</b>	<b>85.00</b>
4"	NST (NH)	<b>AFP400F~</b>	<b>187.25</b>

Not all sizes are stocked.

## Brass Caps and Plugs with Chain

Cast brass finish  
Pin lug

\* Rocker lug

-C polished chrome plated



Size	Thread	Part #	Price / Each
1"	NST (NH)	<b>RFC100F *</b>	<b>\$28.85</b>
1½"	NST (NH)	<b>FC150F</b>	<b>17.80</b>
1½"	NST (NH)	<b>FC150F-C</b>	<b>46.20</b>
1½"	NST (NH)	<b>RFC150F *</b>	<b>18.70</b>
2½"	NST (NH)	<b>FC250F</b>	<b>24.75</b>
2½"	NST (NH)	<b>FC250F-C</b>	<b>67.40</b>
2½"	NST (NH)	<b>RFC250F *</b>	<b>26.00</b>
3"	NST (NH)	<b>FC300F</b>	<b>49.35</b>
4"	NST (NH)	<b>FC400F</b>	<b>143.00</b>
4½"	NST (NH)	<b>FC450F</b>	<b>144.90</b>
5"	NST (NH)	<b>FC500F~</b>	<b>325.00</b>
6"	NST (NH)	<b>FC600F</b>	<b>200.00</b>
1"	NPSH	<b>RFC100 *</b>	<b>\$28.85</b>
1½"	NPSH	<b>FC150</b>	<b>17.80</b>
2½"	NPSH	<b>FC250</b>	<b>26.95</b>
3"	NPSH	<b>FC300</b>	<b>71.75</b>

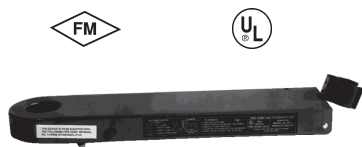
Cast brass finish  
Pin lug

-C polished chrome plated



Size	Thread	Part #	Price/Ea
1½"	NST (NH)	<b>FP150F</b>	<b>\$32.40</b>
2½"	NST (NH)	<b>FP250F</b>	<b>46.15</b>
2½"	NST (NH)	<b>FP250F-C</b>	<b>56.40</b>
1½"	NPSH	<b>FP150</b>	<b>\$32.40</b>
2½"	NPSH	<b>FP250</b>	<b>46.15</b>

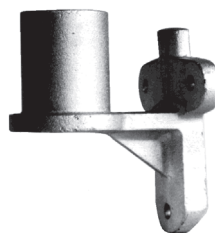
## Fire Hose Pin Rack and Accessories



**FHPR150**



**PRN150F**



**PRWB**



**PRC**

Description	Part #	Price / Each
Red steel enameled rack is Underwriters Listed and Factory Mutual approved. Will hold up to 100 ft. of 1½" rack hose. For use with <b>PRN150F</b> and <b>AVF150</b> .	<b>FHPR150</b>	\$97.65
	<b>FHPR2515~</b>	97.65
Red steel enameled rack is Underwriters Listed and Factory Mutual approved. Will hold up to 100 ft. of 1½" rack hose. For use with <b>PRN250F</b> and <b>AVF250</b> .	<b>PRN150F</b>	29.45
	<b>PRN250F~</b>	55.15
Aluminum wall bracket used to support hose rack independent of stand pipe valve.	<b>PRWB</b>	62.20
Hose rack cover in 10 oz. red vinyl with Velcro™ closures Dimensions: 25" H x 30" W x 6" deep	<b>PRC</b>	112.00

## Hump Racks

- Compact, neat and economical method of storing collapsible hose
- Pivot mounting permits rack to swing to the proper angle, preventing kinks and twists.
- Rugged steel construction provides long, dependable service.
- Red enamel finish for protection and appearance
- Open sides allow faster hose drying to prevent mold and mildew.
- Wall mounting brackets are standard
- Optional pipe clamp mounting brackets are available. Consult the factory for pricing.



Hose Size	Capacity			Part #	Price / Each
	Synthetic	Single Jacket	Double Jacket		
1½" - 1¾"	100'	50'	---	<b>FHHR-1</b>	\$275.65
2" - 2½"	100'	50'	---	<b>FHHR-2</b>	307.90
1½" - 1¾"	200'	150'	100'	<b>FHHR-5</b>	373.80

- Fluorescent red vinyl coated nylon with Velcro™ closures
- Printed on both sides

Cover For	Dimensions	Part #	Price / Each
FHHR-1 or FHHR-2	25½" x 6" x 16"	<b>FHHR-C~</b>	\$116.00
FHHR-5 or FHHR-6	35½" x 6" x 33½"	<b>FHHR-C5~</b>	195.00



Hose and valve not included.

## Angle and Suction Elbows

For use on pump discharge valves, or the suction inlet, to minimize hose kinking.

- Rocker lug
- Polished brass finish



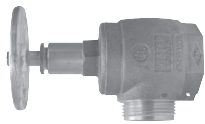
45°



90°

Female NST (NH) x Male NST (NH)	Part #	Price/Ea
45°, 2½" x 2½"	<b>RSE45250F</b>	<b>\$245.00</b>
90°, 2½" x 2½"	<b>RSE90250F</b>	<b>245.00</b>

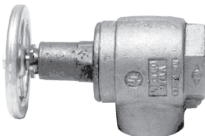
## Cast Brass Angle Hose Valves



Female x Male

- Underwriters Listed and Factory Mutual approved
- New York City Board of Standards and Appeals approved
- For pressures up to 300 lbs.
- Cast brass with an aluminum wheel

Description	Part #	Price / Each	Qty
1½" female NPT x 1½" male NST (NH)	<b>AV150</b>	<b>\$96.10</b>	10
2½" female NPT x 2½" male NST (NH)	<b>AV250</b>	<b>185.70</b>	6
1½" female NPT x 1½" female NPT	<b>AVF150</b>	<b>96.10</b>	10
2½" female NPT x 2½" female NPT	<b>AVF250</b>	<b>185.70</b>	6
1½" aluminum replacement wheel	<b>AV150-W~</b>	<b>25.30</b>	---
2½" aluminum replacement wheel	<b>AV250-W~</b>	<b>35.70</b>	---



Female x Female

Optional Pkg./Box Quantity Shown

J

## NEW Forged Brass Angle Hose Valves



Female x Male

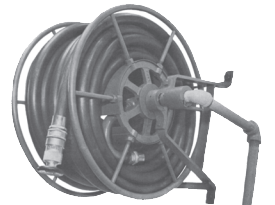
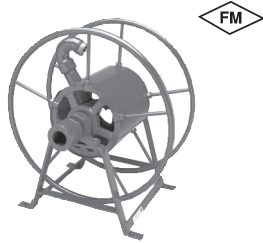
- Underwriters Listed and Factory Mutual approved
- To be used with a fire hose rack assembly, or as a fire department outlet connection
- For use up to **300 PSI**
- Forged brass with a red handwheel

Description	Part #	Price / Each	Qty
1½" female NPT x 1½" male NST (NH)	<b>AV151</b>	<b>\$66.50</b>	1
2½" female NPT x 2½" male NST (NH)	<b>AV251</b>	<b>99.80</b>	1
2½" female NPT x 3" male NST (NH)	<b>AV2531</b>	<b>137.45</b>	1
1½" female NPT x 1½" female NPT	<b>AVF151</b>	<b>74.35</b>	1
2½" female NPT x 2½" female NPT	<b>AVF251</b>	<b>143.70</b>	1

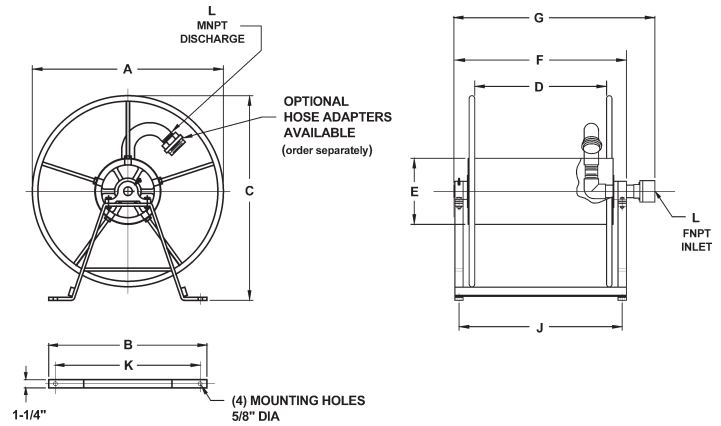


Female x Female

## Continuous Flow Reels



Hose and valve not included.



- For fire protection or industrial wash-down
- Perfect for inside buildings, aboard ships or on mobile equipment
- Suitable for wall or floor mounting
- Manual rewind
- Rugged steel construction
- Red polyester powder coat finish
- Factory Mutual approved
- Working pressures to **300 PSI**

Hose I.D.	Part #	Hose Capacity	A	B	C	D	E	F	G	J	K	L	Weight lbs.	Price / Each
3/4" 1"	<b>FD47-1-100~</b>	150' 100'	24"	19"	26"	10"	10"	16"	21"	14 3/4"	17"	1"	73 lbs.	<b>\$1094.00</b>
3/4" 1"	<b>FD47-1-200</b>	300' 200'	24"	19"	26"	20"	10"	26"	31"	24 3/4"	17"	1"	83 lbs.	<b>1258.45</b>
1 1/4" 1 1/2"	<b>FD47-150-50</b>	75' 50'	24"	19"	26"	10"	10"	16"	21"	14 3/4"	17"	1 1/2"	80 lbs.	<b>1281.30</b>
1 1/4" 1 1/2"	<b>FD47-150-100</b>	150' 100'	24"	19"	26"	20"	10"	26"	31"	24 3/4"	17"	1 1/2"	92 lbs.	<b>1327.90</b>
1 1/2" 1 1/2"	<b>FD47-150-200~</b>	200'	29"	24"	31"	20"	10"	26"	31"	24 3/4"	22"	1 1/2"	104 lbs.	<b>1500.70</b>

## Continuous Swiveling Elbows

Cast brass finish. Measured from the center of the waterway to the end of the discharge thread.

- Designed to allow a hose to swing when connected
- Full waterway reduces friction loss
- Works well on cross lays with eductor systems



Female NPT x Male NST (NH)	Part #	Price/Ea
1 1/2" x 1 1/2" (short - 2 1/2")	<b>CSES150F</b>	<b>\$190.15</b>
2" x 1 1/2" (short - 2 1/2")	<b>CSES2015F</b>	<b>190.15</b>
2 1/2" x 2 1/2" (standard - 5")	<b>CSEL250F~</b>	<b>557.70</b>

## Groove x Groove Check Valves **NEW**

Designed for use in piping systems where it is necessary to permit flow in one direction and prevent flow in the opposite direction. Supplied with a 1/2" NPT tapped boss below the clapper. Boss above the clapper may be tapped for the addition of a 1/2" NPT drain.

- Brass
- For horizontal and vertical installation
- U/L listed and FM Approved
- For use up to **300 PSI** working pressure



Description	Part #	Price/Ea
4" groove x 4" groove	<b>SCVV400</b>	<b>\$324.35</b>
4" male NPT x 4" female NPT	<b>SCMF400</b>	<b>237.00</b>

## Single Clapper Siamese



Straight - back outlet



90° - bottom outlet

Single swing clapper with (2) pin lug swivel inlets. Provides the required 500 gpm minimum to supplement the fire protection as an auxiliary inlet connection to the water supply. (250 GPM minimum per inlet.) The swing clapper design provides unobstructed waterway. Exposed Fire Department Connections (FDC) provide an economical method of satisfying local fire codes.

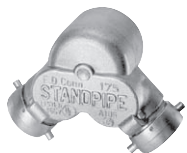
- U/L Listed and FM approved
- Cast brass finish
- Branding: "Auto-Sprk" Only
- For use up to **250 PSI**

Shape	Female Outlet NPT	(2) Female Inlets NH (NST)	Part #	Price / Each
Straight	4"	2½"	<b>SCS4025F</b>	<b>\$211.15</b>
	90°	2½"	<b>90SCS4025F~</b>	<b>247.15</b>

## Double Clapper Siamese



Straight - back outlet



90° - bottom outlet

Double drop clappers with (2) pin lug swivel inlets. Provides the required 500 gpm minimum to supplement the fire protection as an auxiliary inlet connection to the water supply. (250 GPM minimum per inlet.) Exposed Fire Department Connections (FDC) provide an economical method of satisfying local fire codes.

- U/L Listed and FM approved
- Cast brass finish
- Branding: "Auto-Sprk" \*
- For use up to **175 PSI**

Shape	Female Outlet NPT	(2) Female Inlets NH (NST)	Part #	Price / Each
Straight	4"	2½"	<b>DCS4025F</b>	<b>\$334.50</b>
	90°	2½"	<b>90DCS4025F</b>	<b>352.25</b>

\* "Standpipe" or "Auto Sprk-Standpipe" branding also available

## Roof Connections



Straight



90°

Used to create roof connections, fire pump test connections, wall hydrants or sidewalk (free standing) hydrants.

- Cast brass
- For use up to **175 PSI**
- Provides 250 GPM minimum per outlet

Shape	Female Inlet NPT	(2) Male Outlets NPT	Part #	Price / Each
Straight	4"	2½"	<b>FRC4025</b>	<b>\$155.00</b>
	90°	2½"	<b>90FRC4025~</b>	<b>182.65</b>

Roof manifolds are also available, consult the factory for pricing and availability.

## Round Escutcheon Plates

Used to trim out and identify exposed fire department connections.

- Branding: "Auto-Sprk" <sup>1</sup>
- Cast finish <sup>2</sup>



Pipe Size	Plate O.D.	Hole Size	Material	Part #	Price / Each
4"	9-1/4"	4½"	Brass	<b>REP400AS~</b>	<b>\$79.80</b>
4"	9-5/8"	4½"	Aluminum	<b>AREP400AS</b>	<b>38.05</b>
4"	9-5/8"	4½"	Red Plastic	<b>PREP400AS</b>	<b>16.90</b>

<sup>1</sup> "Standpipe" or "Auto Sprk-Standpipe" branding also available

<sup>2</sup> Polished or polished chrome finishes also available



### Thermoplastic Breakable Cap

Prevents entry of foreign materials and protects female threads on pin lug fire department inlet connections.

- Molded red thermoplastic
- Used on pin lug females

Size	Part #	Price / Each	Qty
2½"	<b>PBC250</b>	<b>\$6.75</b>	25

Optional Pkg./Box Quantity Shown



### Thermoplastic Adjust-A-Plug

- An inexpensive molded red thermoplastic protective plug for swivel connections up to 2½".
- Two adjustable metal plates installed in the back of the plug can be easily mated with your local thread.
- The plug can be easily removed with a fire department spanner wrench.

Part #	Price / Each
<b>PAP250</b>	<b>\$6.75</b>



### Universal Hose Cap

The universal push on - pull off cap protects all threads by gripping valve or outlet on the inside of the waterway. It comes complete with plated chain.

- *Not intended to be pressurized*

Size	Part #	Price / Each
2½"	<b>PFC250U</b>	<b>\$14.90</b>



### Plain Wyes with Pin Lugs

- Divides one stream into two
- 1 female swivel and 2 male outlets
- Cast brass

Female NST	Male NST	Part #	Price / Each
1½"	1½"	<b>PW15F15F</b>	<b>\$214.80</b>
2½"	1½"	<b>PW25F15F</b>	<b>309.75</b>
2½"	2½"	<b>PW25F25F</b>	<b>295.00</b>



### Plain Wyes with Rocker Lugs

- Divides one stream into two
- 1 female swivel and 2 male outlets
- Aluminum

Female Thread	Male NPSH	Part #	Price / Each
1" NPSH	1"	<b>ARPW10S10S</b>	<b>\$223.80</b>
1½" NST	1"	<b>ARPW15F10S</b>	<b>229.70</b>



J

## Brass Female Swivel Adapters with Pin Lugs

- Cast brass finish



Female NST (NH)Thread	Female NPT Thread	Part #	Price / Each
1½"	1½"	<b>SF150F</b>	<b>\$72.00</b>
2½"	1½"	<b>SF25F15T</b>	<b>123.90</b>
2½"	2"	<b>SF25F20T</b>	<b>117.60</b>
2½"	2½"	<b>SF250F</b>	<b>92.00</b>
2½"	3"	<b>SF25F30T</b>	<b>114.20</b>
3"	3"	<b>SF300F</b>	<b>160.70</b>
Female NPSH Thread	Female NPT Thread	Part #	Price / Each
1½"	1½"	<b>SF150S</b>	<b>\$72.00</b>
2½"	2½"	<b>SF250S</b>	<b>108.25</b>

## Brass Female Swivel Adapters with Rocker Lugs

- Cast brass finish



Female NST (NH)Thread	Female NPT Thread	Part #	Price / Each
1½"	1½"	<b>RSF150F</b>	<b>\$72.00</b>
2½"	1½"	<b>RSF25F15T</b>	<b>123.90</b>
2½"	2"	<b>RSF25F20T</b>	<b>117.60</b>
2½"	2½"	<b>RSF250F</b>	<b>92.00</b>
2½"	3"	<b>RSF25F30T</b>	<b>114.20</b>

## Aluminum Female Swivel Adapters with Rocker Lugs

- Aluminum hardcoat finish



Female NST (NH)Thread	Female NPT Thread	Part #	Price / Each
4"	4"	<b>ASF40F40T~</b>	<b>\$536.85</b>
4½"	4"	<b>ASF45F40T~</b>	<b>568.00</b>
6"	6"	<b>ASF60F60T</b>	<b>813.20</b>

## Brass Female Swivel Suction Adapters with Screen

- Cast brass finish
- Rocker lug design
- Suction intake with strainer screen



Female NST (NH)Thread	Female NPT Thread	Part #	Price / Each
2½"	1½"	<b>RSFSA25F15T</b>	<b>\$206.75</b>
2½"	2"	<b>RSFSA25F20T</b>	<b>206.75</b>
2½"	2½"	<b>RSFSA250F</b>	<b>186.00</b>
2½"	3"	<b>RSFSA25F30T</b>	<b>215.45</b>

### Brass Male Swivel Adapters with Pin Lugs

- Cast brass finish

Female NST (NH)Thread	Male NPT Thread	Part #	Price / Each
1½"	1½"	<b>SM150F</b>	\$73.25
2½"	1½"	<b>SM25F15T</b>	117.00
2½"	2"	<b>SM25F20T</b>	118.10
2½"	2½"	<b>SM250F</b>	78.00
2½"	3"	<b>SM25F30T</b>	141.00
Female NPSH Thread	Male NPT Thread	Part #	Price / Each
1½"	1½"	<b>SM150S</b>	\$73.25
2½"	2½"	<b>SM250S</b>	78.00
Female NPSH Thread	Male NST (NH)Thread	Part #	Price / Each
1½"	1½"	<b>SM15S15F</b>	\$76.95



### Brass Male Swivel Adapters with Rocker Lugs

- Cast brass finish

Female NST (NH)Thread	Male NPT Thread	Part #	Price / Each
1½"	1½"	<b>RSM150F</b>	\$73.25
2½"	1½"	<b>RSM25F15T~</b>	117.00
2½"	2"	<b>RSM25F20T</b>	118.10
2½"	2½"	<b>RSM250F</b>	78.00
2½"	3"	<b>RSM25F30T</b>	141.00



### Aluminum Male Swivel Adapters with Rocker Lugs

- Aluminum hardcoat finish

Female NST (NH)Thread	Male NPT Thread	Part #	Price / Each
4"	4"	<b>ASM40F40T</b>	\$495.10
4½"	4"	<b>ASM45F40T</b>	579.50
6"	6"	<b>ASM60F60T</b>	723.80



### Brass Male Swivel Suction Adapters with Screen

- Cast brass finish
- Rocker lug design
- Suction intake with strainer screen

Female NST (NH)Thread	Male NPT Thread	Part #	Price / Each
2½"	1½"	<b>RSMSA25F15T</b>	\$195.25
2½"	2"	<b>RSMSA25F20T</b>	195.25
2½"	2½"	<b>RSMSA250F</b>	188.20
2½"	3"	<b>RSMSA25F30T</b>	216.50

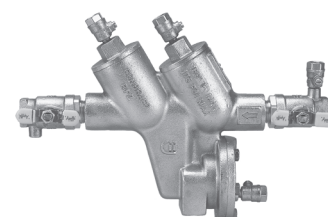


### Backflow Preventer

**NEW**

Designed to give maximum protection against backflow caused by either back-pressure or back-siphonage from a cross-connection wherein a contaminant or a pollutant hazard exists.

- Consists of two spring-loaded poppet type check valves and a mechanically independent, hydraulically dependent pressure differential relief valve.
- Three top mounted test cocks ensure easy access during repair and maintenance
- Supply pressures up to **175 PSIG** and water temperatures from **33°F to 180°F**
- Meets USC's FCCC and HR Manual, Sec. 10, ASSE 1015, AWWA C-510 and CSA B64.4 specifications



NPT	Working Pressure PSI	Part #	Wt. Lbs.	Price / Each
2"	175	<b>BFP200</b>	41	\$835.75

Create a Fire Hydrant Backflow Preventer by using the **RSMSA25F20T** (above) and the **DMH2025F**.

## Spanner and Hydrant Wrenches

### Aluminum Universal Spanner Wrench



Weight 0.62 lbs.

Part #	Price/Ea	Qty
USW	\$19.05	25

- For 3/4" to 3" pin lug and rocker lug couplings
- Includes gas cock shutoff, pry bar and belt hook eye
- Overall length 11-7/8"

### Universal Wrench



Weight 1.16 lbs.

Part #	Price / Each
233	\$38.05

- For pin lug or sensible (rocker) lug couplings 1" thru 4 1/2"
- A gas cock shutoff is provided in the handle
- Malleable iron, red epoxy painted
- Overall length 11 3/4"

### Aluminum Forestry Pocket Spanner Wrench

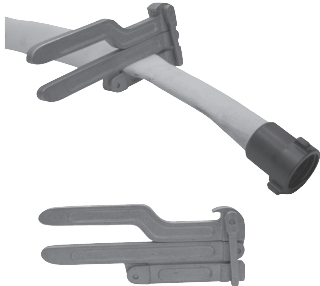


Weight 0.12 lbs.

Part #	Price / Each
FSW1	\$20.25

- For use on 1" and 1 1/2" hoses
- Meets USFDA specification 5100-101C
- Overall length 5"

### Forestry Hose Clamp and Spanner



Weight 0.63 lbs.

Part #	Price / Each
FHCS150	\$104.00

- Hose clamp is constructed from cast aluminum and brass.
- Off-set handle enables the user to easily operate the clamp while wearing gloves.
- Designed to be used with lightweight 1" and 1 1/2" hoses for pressures up to 200 PSI.
- When clamped onto the hose the brass locking device safely holds the clamp in position. A spanner is an integral part of the clamp.
- Overall length 10"

### Hole Type Spanner Wrench



Weight 0.20 lbs.

Part #	Price / Each
HTSW	\$18.85

- A rugged and dependable compact hole spanner designed for use on 3/4" and 1" booster hose couplings.
- Construction of AL-MAG 35
- Overall length is 7 1/2"

### Storz Adjustable Hydrant Wrench



Weight 6 lbs.

Part #	Price / Each
SAHW	\$123.30

- Ductile iron head
- Knurled chrome plated handle
- Manganese bronze adjustable jaw

### Storz Spanner Wrench



Weight 1 lb.

Part #	Price / Each
SZW2	\$44.90

- One piece design
- AL-MAG 35

### Folding Pocket Spanner Wrench



Material	Part #	Price/E	Wt. lbs.
aluminum	PSW	\$29.50	0.30
brass	PSW-B	60.55	0.72
die cast zinc	PSW-Z	24.75	0.56
yellow plastic	PSW-Y	38.40	0.27

- A compact wrench, easily carried in your jacket pocket.
- Designed to fit 3/4" to 3" sensible (rocker) lug and pin lug couplings.

## Spanner and Hydrant Wrenches

### Adjustable Hydrant Wrench

- Plated malleable iron head and 1/2" plated steel handle
- For pentagon nuts up to 1 3/4"
- Built-in spanner for pin or rocker lug couplings
- Overall length 16 1/4"

Weight 2.7 lbs.

Part #	Price/Ea	Qty
AHW	\$25.75	20



### "Pigtail" Adjustable Hydrant Wrench

- Double spanner head will fit pin lug or rocker (sensible) lug couplings, pentagon nuts up to 1 1/2" point to flat, 1 1/2" - 6" rocker lug caps, 2" - 4 1/2" pin lug caps, and square nuts up to 1-1/8"

Weight 4.5 lbs.

Part #	Price / Each
AHWPT	\$75.50



### Heavy Duty Adjustable Hydrant Wrench

- Plated malleable iron head, 7/8" plated steel handle
- For pentagon hydrant nuts up to 1 3/4" from point to flat
- Notched to fit 1 1/4" square hydrant nut
- Spanner for pin lug and sensible (rocker) lug couplings, 1 1/2" thru 6"
- Overall length 18"

Weight 4.7 lbs.

Part #	Price/Each	Qty
189	\$38.70	15



### Double Head Adjustable Hydrant Wrench

- Accommodates pentagon hydrant nuts up to 1-7/8" and square heads up to 1 1/2"
- Designed to fit 3/4" - 6" rocker lug or pin lug couplings. Can also be used for long handle couplings.
- Ductile iron head with a deeply knurled chrome plated steel handle
- Replaceable adjustable jaw is made of manganese bronze
- Overall length 19 1/2"

Weight 5 lbs.

Part #	Price / Each
189DH	\$93.75



### 5 Hole Hydrant Wrench

- 5 pentagon holes designed to fit common hydrant nut sizes
- Built-in spanner for pin or rocker lug couplings
- Plated malleable iron

Weight 1.94 lbs.

Part #	Price/Each	Qty
PHW	\$22.40	25



### Grip-All Spanner Wrench

- Lightweight aluminum, designed to fit 3/4" to 6" split lug, rocker lug and pin lug couplings
- Can be operated in tight quarters
- A gas cock shutoff is provided in the handle. The handle is shaped to fit your hand and makes for a positive grip on the coupling.

Weight 0.52 lbs.

Part #	Price / Each
GAW	\$45.80



### Long Handle Suction Spanner Wrench

- Plated iron spanner for use on long handle, rocker lug, or pin lug couplings from 2 1/2" to 6"
- Open end slips over long handles for additional leverage while the claw fits rocker lugs or pin lugs. The other end can be used as a pry or crowbar.
- Inverted "T" body construction for lighter weight and improved strength.
- Can be used on Dixon's cam and groove pin lug or trapezoidal lug tank car adapters, or 8" pin lug couplings.
- Overall length 18-3/4"

Weight 3.25 lbs.

Part #	Price / Each
LHW	\$231.00



Also see additional Spanner Wrenches on page 190.



### Brass Single Hydrant Gate Valves



- Pin lug swivel. Non-rising stem. Aluminum speed handle. **Rubber seal.**
- This valve is designed to protect fire hydrants from damage that can occur if they are used for throttling.
- For use up to **175 PSI** (water only)

Female x Male	Part #	Price / Each	Qty
2½" NST (NH) x 2½" NPSH	<b>HGV250</b>	<b>\$467.25</b>	4
2½" NST (NH) x 2½" NST (NH)	<b>HGV250F</b>	<b>467.25</b>	4
Replacement Handle	<b>HGV250-H</b>	<b>15.00</b>	1

### Aluminum Single Hydrant Gate Valves



- Pin lug swivel. Non-rising stem. Aluminum speed handle. **Rubber seal.**
- This valve is designed to protect fire hydrants from damage that can occur if they are used for throttling.
- For use up to **175 PSI** (water only)

Female x Male	Part #	Price/E
2½" NST (NH) x 2½" NST (NH)	<b>AHGV250F</b>	<b>\$479.60</b>
Replacement Handle	<b>HGV250-H</b>	<b>15.00</b>

### Single Hydrant Gate Valves



- Pin lug swivel. Non-rising stem. Red hand wheel. **Metal-metal seal.**
- This valve is designed to protect fire hydrants from damage that can occur if they are used for throttling.
- For use up to **300 PSI** (water only)

Female x Male	Part #	Price/E
2½" NST (NH) x 2½" NST (NH)	<b>HGVW250F</b>	<b>\$390.00</b>

### Non-Rising Stem Wedge Disc Gate Valves



Cast brass. With cap and chain.

Female x Male	Working Pressure	U/L	Part #	Price/E	Qty
1½" NPT x 1½" Male NST (NH)	<b>300 PSI</b>	No	<b>WDGV150F</b>	<b>\$308.45</b>	2
2½" NPT x 2½" Male NST (NH) (UL)	<b>300 PSI</b>	Yes	<b>WDGV250F</b>	<b>452.35</b>	2

**NEW**

### Wedge Disc Gate Valves - Non-rising Stem (UL) (FM)



- Forged brass, satin finish
- **Red** handwheel
- Solid wedge disc with tapered seats
- Straightway pattern
- U/L listed and FM Approved
- For use on standpipes, fire pumps and hydrants

Inlet Female NPT	Outlet Male NH (NST)	U/L	Working Pressure PSI	Part #	Price/E
2½"	2½"	No	<b>300</b>	<b>WDGV251F</b>	<b>\$254.70</b>
3"	2½"	Yes	<b>300</b>	<b>WDGV3025F</b>	<b>280.30</b>

### Rising Stem Wedge Disc Gate Valves (UL)



Cast brass. With cap and chain. **Note:** Not recommended for wet standpipe systems.

Female x Male	Working Pressure	U/L	Part #	Price/E	Qty
2½" NPT x 2½" Male NST (NH)	<b>200 PSI</b>	Yes	<b>RWDGV250F~</b>	<b>\$461.15</b>	2
3" NPT x 2½" Male NST (NH)	<b>300 PSI</b>	Yes	<b>RWDGV3025F~</b>	<b>564.75</b>	2

## Brass Siamese 1/4 Turn Plug Type Hose Valves

Cast brass. Not recommended for charged preconnected hose lines.

Female x Male	Part #	Price / Each	Qty
2 1/2" NST (NH) x 1 1/2" NST (NH)	<b>S6175</b>	<b>\$579.45</b>	5
2 1/2" NST (NH) x 1 1/2" NPSH	<b>S6175S</b>	<b>579.45</b>	5
Replacement handle	<b>S6175-H~</b>	<b>106.35</b>	1



## Full Flow Brass Siamese 1/4 Turn Ball Type Hose Valves

Cast brass. Recommended for charged preconnected hose lines. Rocker lug

Female x Male	Part #	Price / Each
1 1/2" NST (NH) x 1 1/2" NST (NH)	<b>S7100-15</b>	<b>\$800.00</b>
2 1/2" NST (NH) x 1 1/2" NST (NH)	<b>S7100</b>	<b>682.50</b>



## Leader Line Wye 1/4 Turn Ball Type Hose Valves

Rocker lug 2 1/2" chromed swivel. Body painted red.  
For use up to **400 PSI** (water only)

Female x Male	Part #	Price / Each
2 1/2" NST (NH) x 1 1/2" NST (NH)	<b>LLBV2515F</b>	<b>\$364.40</b>



## Aluminum 1/4 Turn Ball Type Wye Valves - Forestry Grade

- Cast aluminum, swivel inlet, anodized body, hard-coated threads
- Water/AFFF
- Built to United States Forest Service specifications

Female x Male	PSI	Part #	Price/Ea
1" NPSH x 1" NPSH	<b>600</b>	<b>FWV10S10S</b>	<b>\$349.55</b>
1 1/2" NST (NH) x 1" NPSH	<b>600</b>	<b>FWV15F10S</b>	<b>428.90</b>
1 1/2" NST (NH) x 1 1/2" NST (NH)	<b>600</b>	<b>FWV15F15F</b>	<b>402.45</b>
2 1/2" NST (NH) x 1 1/2" NST (NH)	<b>400</b>	<b>FWV25F15F</b>	<b>478.00</b>
2 1/2" NST (NH) x 2 1/2" NST (NH)	<b>400</b>	<b>FWV25F25F</b>	<b>981.25</b>

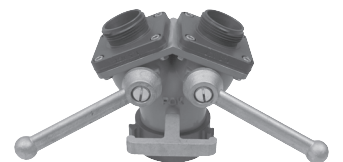


## Aluminum Siamese 1/4 Turn Ball Type Hose Valve

Lightweight aluminum body with raised legs for easier access to end connections.  
The T handle makes it easy to carry. Bolted style

Female x Male	Working Pressure	Part #	Price/Ea
2 1/2" NST (NH) x (2) 1 1/2" Male NST (NH)	<b>200 PSI</b>	<b>ASBV2515F</b>	<b>\$521.60</b>

Repair parts are available. Consult the factory for price and availability.



## Aluminum Siamese Rising Stem Fly Wheel Hose Valve

Lightweight aluminum body with raised legs for easier access to end connections.  
The T handle makes it easy to carry.

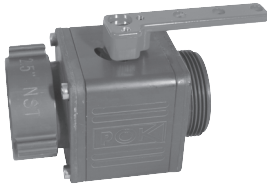
Female x Male	Working Pressure	Part #	Price/Ea
2 1/2" NST (NH) x (2) 1 1/2" Male NST (NH)	<b>200 PSI</b>	<b>ASFWV2515F~</b>	<b>\$558.15</b>

Repair parts are available. Consult the factory for price and availability.



J

## Ball Type Valves



- Lightweight aluminum body
- Hardcoated female swivel inlet and male outlet
- Maximum operating pressure to **200 PSI (water only)**

Inlet Thread	Outlet Thread	Waterway	Part #	Price / Each
2½" Female NST (NH)	2½" Male NST (NH)	2"	<b>AHBV250F~</b>	<b>\$446.25</b>

## Brass Double Female Swivels with Pin Lugs

Cast brass finish



Female NPSH Thread	Female NPSH Thread	Part #	Price / Each
1½"	1½"	<b>DFP1515</b>	<b>\$65.70</b>
2½"	2½"	<b>DFP2525</b>	<b>133.00</b>

Female NST (NH)Thread	Female NST (NH)Thread	Part #	Price / Each
1½"	1½"	<b>DFP1515F</b>	<b>\$65.70</b>
2½"	2½"	<b>DFP2525F</b>	<b>133.00</b>

Female NST (NH)Thread	Female NPSH Thread	Part #	Price / Each
1½"	1½"	<b>DFP15F15S</b>	<b>\$70.70</b>
2½"	2½"	<b>DFP25F25S</b>	<b>146.40</b>

## Brass Double Female Swivels with Rocker Lugs

Cast brass finish



Female NPSH Thread	Female NPSH Thread	Part #	Price / Each
1½"	1½"	<b>DFR1515</b>	<b>\$65.70</b>
2½"	2½"	<b>DFR2525</b>	<b>133.00</b>

Female NST (NH)Thread	Female NST (NH)Thread	Part #	Price / Each
1½"	1½"	<b>DFR1515F</b>	<b>\$65.70</b>
2½"	2½"	<b>DFR2525F</b>	<b>133.00</b>

## Aluminum Double Female Swivels with Rocker Lugs



Female NPSH Thread	Female NPSH Thread	Part #	Price / Each
<b>New Sizes</b> 1"	1"	<b>ADFR1010S</b>	<b>\$40.25</b>
1½"	1½"	<b>ADFR1515</b>	<b>49.50</b>
2½"	2½"	<b>ADFR2525</b>	<b>85.95</b>

Female NST (NH)Thread	Female NST (NH)Thread	Part #	Price / Each
1½"	1½"	<b>ADFR1515F</b>	<b>\$49.50</b>
1½"	2½"	<b>ADFR1525F</b>	<b>68.25</b>
2½"	2½"	<b>ADFR2525F</b>	<b>85.95</b>

Female NST (NH)Thread	Female NPSH Thread	Part #	Price / Each
1½"	1½"	<b>ADFR15F15S</b>	<b>\$49.50</b>
2½"	2½"	<b>ADFR25F25S</b>	<b>85.95</b>



## Brass Hydrant Adapters with Pin Lugs



Reducer



Same Size



Increaser

Female NST (NH)Thread	Male GHT Thread	Part #	Price / Each
1½"	¾"	<b>HA1576</b>	<b>\$34.65</b>
2½"	¾"	<b>HA2576</b>	<b>33.10</b>

Female NPSH Thread	Male NPSH Thread	Part #	Price / Each
1½"	1"	<b>HA15S10</b>	<b>\$35.20</b>

Female NST (NH)Thread	Male NPSH Thread	Part #	Price / Each
1½"	¾"	<b>HA1575</b>	<b>\$34.20</b>
1½"	1"	<b>HA1510</b>	<b>35.20</b>
1½"	1½"	<b>HA1515</b>	<b>35.45</b>
2½"	1"	<b>HA2510</b>	<b>34.65</b>
2½"	1½"	<b>HA2515</b>	<b>26.80</b>
2½"	2"	<b>HA2520</b>	<b>39.90</b>
2½"	2½"	<b>HA2525</b>	<b>59.85</b>
2½"	3"	<b>HA2530</b>	<b>90.20</b>

Female NPSH Thread	Male NST (NH)Thread	Part #	Price / Each
1½"	1½"	<b>HA15S15F</b>	<b>\$35.60</b>
2"	1½"	<b>HA20S15F</b>	<b>67.45</b>
2"	2½"	<b>HA20S25F</b>	<b>70.00</b>
2½"	2½"	<b>HA25S25F</b>	<b>63.00</b>
3"	2½"	<b>HA30S25F</b>	<b>85.00</b>

Female NST (NH)Thread	Male NST (NH)Thread	Part #	Price / Each
1½"	1"	<b>HA1510F</b>	<b>\$35.20</b>
1½"	1½"	<b>HA1515F</b>	<b>44.10</b>
1½"	2½"	<b>HA1525F</b>	<b>51.65</b>
2"	2½"	<b>HA2025F</b>	<b>94.40</b>
2½"	1"	<b>HA2510F</b>	<b>33.60</b>
2½"	1½"	<b>HA2515F</b>	<b>26.80</b>
2½"	2"	<b>HA2520F</b>	<b>42.40</b>
2½"	2½"	<b>HA2525F</b>	<b>64.65</b>
2½"	3"	<b>HA2530F</b>	<b>91.00</b>
3"	1½"	<b>HA3015F</b>	<b>82.05</b>
3"	2½"	<b>HA3025F</b>	<b>85.00</b>
4"	2½"	<b>HA4025F</b>	<b>196.75</b>
4½"	2½"	<b>HA4525F</b>	<b>194.05</b>

Female NPSH Thread	Male NPT Thread	Part #	Price / Each
1½"	1"	<b>HA15S10T</b>	<b>\$35.20</b>
1½"	1½"	<b>HA15S15T</b>	<b>35.60</b>
3"	2½"	<b>HA30S25T</b>	<b>85.00</b>

Female NPT Thread	Male GHT Thread	Part #	Price / Each
1½"	¾"	<b>HA15S76</b>	<b>\$34.85</b>

Female NPSH Thread	Male NST (NH)Thread	Part #	Price / Each
1½"	1½"	<b>HA15T15F</b>	<b>\$39.20</b>
2"	2½"	<b>HA20T25F</b>	<b>70.00</b>

Female NST (NH)Thread	Male NPT Thread	Part #	Price / Each
1½"	¾"	<b>HA1575T</b>	<b>\$37.95</b>
1½"	1"	<b>HA1510T</b>	<b>37.00</b>
1½"	1½"	<b>HA1515T</b>	<b>35.45</b>
2½"	¾"	<b>HA2575T</b>	<b>27.15</b>
2½"	1"	<b>HA2510T</b>	<b>29.60</b>
2½"	1½"	<b>HA2515T</b>	<b>26.80</b>
2½"	2"	<b>HA2520T</b>	<b>39.90</b>
2½"	2½"	<b>HA2525T</b>	<b>57.40</b>
2½"	3"	<b>HA2530T</b>	<b>94.75</b>

Female NPT Thread	Male NPT Thread	Part #	Price / Each
1½"	2½"	<b>HA15T25T</b>	<b>\$52.90</b>

- Other styles and sizes are also available
- Not all configurations are stocked
- Consult the factory for pricing and availability

**NEW**

**J**

## Brass Hydrant Adapters with Rocker Lugs



Reducer



Same Size



Increaser

Female NST (NH)Thread	Male GHT Thread	Part #	Price / Ea
1½"	¾"	<b>RHA1576</b>	<b>\$34.65</b>
2½"	¾"	<b>RHA2576</b>	<b>33.10</b>

Female NPSH Thread	Male NPSH Thread	Part #	Price / Ea
1½"	1"	<b>RHA15S10</b>	<b>\$35.20</b>

Female NST (NH)Thread	Male NPSH Thread	Part #	Price / Ea
1½"	¾"	<b>RHA1575</b>	<b>\$34.20</b>
1½"	1"	<b>RHA1510</b>	<b>35.20</b>
1½"	1½"	<b>RHA1515~</b>	<b>35.45</b>
1½"	2"	<b>RHA1520</b>	<b>78.75</b>
2½"	1"	<b>RHA2510</b>	<b>34.65</b>
2½"	1½"	<b>RHA2515</b>	<b>26.80</b>
2½"	2"	<b>RHA2520</b>	<b>39.90</b>
2½"	2½"	<b>RHA2525~</b>	<b>59.85</b>

Female NPSH Thread	Male NST (NH)Thread	Part #	Price / Ea
1½"	1½"	<b>RHA15S15F</b>	<b>\$35.60</b>
2½"	2½"	<b>RHA25S25F</b>	<b>63.00</b>

Female NPSH Thread	Male NPT Thread	Part #	Price / Ea
1½"	1"	<b>RHA15S10T</b>	<b>\$35.20</b>
1½"	1½"	<b>RHA15S15T</b>	<b>35.60</b>

Female NST (NH)Thread	Male NST (NH)Thread	Part #	Price / Ea
1½"	1"	<b>RHA1510F</b>	<b>\$35.20</b>
1½"	1½"	<b>RHA1515F</b>	<b>34.15</b>
1½"	2½"	<b>RHA1525F</b>	<b>51.65</b>
2"	2½"	<b>RHA2025F</b>	<b>94.40</b>
2½"	1½"	<b>RHA2515F</b>	<b>26.80</b>
2½"	2"	<b>RHA2520F</b>	<b>39.90</b>
2½"	2½"	<b>RHA2525F</b>	<b>64.65</b>
3"	2½"	<b>RHA3025F~</b>	<b>90.20</b>

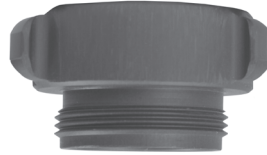
Female NPT Thread	Male NST (NH)Thread	Part #	Price / Ea
1½"	1½"	<b>RHA15T15F</b>	<b>\$39.20</b>
2½"	2½"	<b>RHA25T25F</b>	<b>64.65</b>

- Other styles and sizes are also available
- Not all configurations are stocked
- Consult the factory for pricing and availability

Female NST (NH)Thread	Male NPT Thread	Part #	Price / Ea
1½"	¾"	<b>RHA1575T</b>	<b>\$37.95</b>
1½"	1"	<b>RHA1510T</b>	<b>37.00</b>
1½"	1½"	<b>RHA1515T</b>	<b>35.45</b>
2½"	1½"	<b>RHA2515T</b>	<b>26.80</b>
2½"	2"	<b>RHA2520T</b>	<b>39.90</b>
2½"	2½"	<b>RHA2525T</b>	<b>64.65</b>
2½"	3"	<b>RHA2530T</b>	<b>94.75</b>

J

## Aluminum Hydrant Adapters with Rocker Lugs



Extruded aluminum

Female NST (NH)Thread	Male GHT Thread	Hardcoated	
		Part #	Price/Ea
1"	¾"	<b>AHA1076</b>	<b>\$32.25</b>
1½"	¾"	<b>AHA1576</b>	<b>65.00</b>
2½"	¾"	<b>AHA2576</b>	<b>106.00</b>

Female NST (NH)Thread	Male NPT Thread	Hardcoated	
		Part #	Price/Ea
1½"	1½"	<b>AHA1515T</b>	<b>\$33.50</b>
2½"	1½"	<b>AHA2515T</b>	<b>48.00</b>
2½"	2"	<b>AHA2520T</b>	<b>75.55</b>
2½"	2½"	<b>AHA2525T</b>	<b>60.45</b>
3"	3"	<b>AHA3030T</b>	<b>130.40</b>
4"	4"	<b>AHA4040T</b>	<b>228.40</b>
4½"	4"	<b>AHA4540T</b>	<b>290.20</b>
5"	5"	<b>AHA5050T</b>	<b>374.55</b>
6"	6"	<b>AHA6060T</b>	<b>441.95</b>

Female NST (NH)Thread	Male NPSH Thread	Part #	Price / Ea
1"	1"	<b>AHA1010S</b>	<b>\$34.35</b>
1½"	1"	<b>AHA1510</b>	<b>40.60</b>
1½"	1½"	<b>AHA1515</b>	<b>33.50</b>
2½"	1½"	<b>AHA2515</b>	<b>48.00</b>
2½"	2½"	<b>AHA2525</b>	<b>60.45</b>

Female NST (NH)Thread	Male NST (NH)Thread	Part #	Price / Ea
1"	1½"	<b>AHA1015F</b>	<b>\$44.75</b>
1½"	1"	<b>AHA1510F</b>	<b>40.55</b>
1½"	1½"	<b>AHA1515F</b>	<b>33.50</b>
2½"	1½"	<b>AHA2515F</b>	<b>48.00</b>
2½"	2½"	<b>AHA2525F</b>	<b>60.45</b>
3"	2½"	<b>AHA3025F</b>	<b>90.45</b>

Female GHT Thread	Male NPSH Thread	Part #	Price / Ea
¾"	1"	<b>AHA7610S</b>	<b>\$44.75</b>

Female GHT Thread	Male NST (NH)Thread	Part #	Price / Ea
¾"	1"	<b>AHA7610F</b>	<b>\$44.75</b>

Female NPSH Thread	Male NPSH Thread	Part #	Price / Ea
1"	¾" GHT	<b>AHA10S76</b>	<b>\$30.10</b>
1½"	¾" GHT	<b>AHA15S76</b>	<b>37.40</b>
1"	1½"	<b>AHA10S15</b>	<b>44.75</b>

Female NPSH Thread	Male NPT Thread	Part #	Price / Ea
1½"	1"	<b>AHA15S10T</b>	<b>\$49.05</b>

Female NPSH Thread	Male NST (NH)Thread	Part #	Price / Ea
1"	1"	<b>AHA10S10F</b>	<b>\$34.35</b>
1"	1½"	<b>AHA10S15F</b>	<b>44.75</b>
1½"	1"	<b>AHA15S10F</b>	<b>40.60</b>
1½"	1½"	<b>AHA15S15F</b>	<b>49.50</b>
2"	1½"	<b>AHA20S15F</b>	<b>47.75</b>
2½"	2½"	<b>AHA25S25F</b>	<b>62.10</b>
3"	2½"	<b>AHA30S25F</b>	<b>90.45</b>

- Other styles and sizes are also available
- Not all configurations are stocked
- Consult the factory for pricing and availability

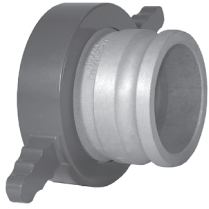
## Brass Hydrant Adapters with Long Handles

-C polished chrome plated

Female NST (NH)Thread	Male NST (NH)Thread	Part #	Price / Ea
4"	2½"	<b>LHA4025F-C</b>	<b>\$456.55</b>
4½"	2½"	<b>LHA4525F-C</b>	<b>460.15</b>
6"	4½"	<b>LHA6045F-C</b>	<b>696.05</b>



## Cam and Groove Hydrant Connections



- Allows you to convert directly from hydrant threads to cam and groove
- Powder coated aluminum long handle swivel nut

Swivel Nut NST (NH)	Cam and Groove Adapter	Part #	Price / Ea
4"	3"	<b>LHA4030ADP</b>	\$220.00
4½"	4"	<b>LHA4540ADP</b>	250.00

## Long Handle Short Shank Females



- For suction and low pressure discharge only
- Powder coated aluminum long handle swivel nut

Hose Shank	Swivel Nut NST (NH)	Part #	Price / Ea
4"	4"	<b>LHFS400F</b>	\$135.00
4"	4½"	<b>LHFS4045F</b>	210.00

## Cam and Groove Hydrant Adapters



Pin lugs allow for easy connection using standard spanner and hydrant wrenches.

Female NST (NH)	Cam and Groove Adapter	Brass		Aluminum	
		Part #	Price	Part #	Price / Ea
1½"	1½"	<b>HA1515ADP</b>	\$46.10	<b>AHA1515ADP</b>	\$24.40
2½"	2½"	<b>HA2525ADP</b>	50.90	<b>AHA2525ADP</b>	31.30

## Brass Double Female Hex Couplings



Cast brass finish

Female Thread	Female Thread	Part #	Price / Ea
1½" NPT	1½" NST (NH)	<b>FFH1515F</b>	\$22.45
2½" NPT	2½" NST (NH)	<b>FFH2525F</b>	45.15

## ¼ Turn Forestry Male Adapters



- Forged aluminum
- Adapters have a common quarter turn sexless head (a 1½" QT fitting will mate with a 1" QT or a ¾" QT)
- Maximum working pressure 300 PSI

Male Thread	Part #	Price / Ea
¾" GHT	<b>QTM75GHT-F</b>	\$30.35
1" NPS	<b>QTM100S-F</b>	31.60
1" NPT	<b>QTM100T-F</b>	31.60
1½" NST (NH)	<b>QTM150F-F</b>	29.55
1½" NPT	<b>QTM150T-F</b>	29.55

## ¼ Turn Forestry Female Adapters



- Forged aluminum
- Adapters have a common quarter turn sexless head (a 1½" QT fitting will mate with a 1" QT or a ¾" QT)
- Maximum working pressure 300 PSI

Female Thread	Part #	Price / Ea
¾" GHT	<b>QTF75GHT-F</b>	\$30.35
1" NPS	<b>QTF100S-F</b>	31.60
1" NPT	<b>QTF100T-F</b>	31.60
1½" NST (NH)	<b>QTF150F-F</b>	29.55
1½" NPT	<b>QTF150T-F</b>	29.55

## Brass Female to Male Hex Nipples



Reducer



Same Size



Increaser

Female NPT Thread	Male NPSH Thread	Part #	Price / Ea
1"	¾" GHT	<b>FM1076</b>	<b>\$20.00</b>
1"	1"	<b>FM1010</b>	<b>30.00</b>
1½"	1½"	<b>FM1515</b>	<b>19.15</b>
2"	2"	<b>FM2020</b>	<b>115.50</b>
2½"	2½"	<b>FM2525</b>	<b>44.85</b>

Female NPSH Thread	Male NPT Thread	Part #	Price / Ea
¾" GHT	1"	<b>FM7610T</b>	<b>\$18.50</b>
1"	¾" GHT	<b>FM10S76</b>	<b>21.00</b>
1½"	1½"	<b>FM15S15T</b>	<b>19.15</b>
2½"	2½"	<b>FM25S25T</b>	<b>44.85</b>

Female NPT Thread	Male NST (NH)Thread	Part #	Price / Ea
1"	1"	<b>FM1010F</b>	<b>\$30.00</b>
1"	1½"	<b>FM1015F</b>	<b>80.85</b>
1½"	1½"	<b>FM1515F</b>	<b>19.15</b>
1½"	2½"	<b>FM1525F</b>	<b>57.60</b>
1½"	3"	<b>FM1530F</b>	<b>90.55</b>
2"	1½"	<b>FM2015F</b>	<b>55.25</b>
2"	2½"	<b>FM2025F</b>	<b>82.95</b>
2½"	2½"	<b>FM2525F</b>	<b>44.85</b>
3"	2½"	<b>FM3025F</b>	<b>82.95</b>
3"	3"	<b>FM3030F</b>	<b>130.00</b>
4"	2½"	<b>FM4025F</b>	<b>171.20</b>
4"	4"	<b>FM4040F</b>	<b>329.30</b>
4"	4½"	<b>FM4045F</b>	<b>189.65</b>
4"	5"	<b>FM4050F</b>	<b>378.70</b>
6"	6"	<b>FM6060F</b>	<b>575.00</b>

Female NPSH Thread	Male NST (NH)Thread	Part #	Price / Ea
1½"	1½"	<b>FM15S15F</b>	<b>\$19.15</b>
2"	1½"	<b>FM20S15F</b>	<b>57.85</b>
2"	2½"	<b>FM20S25F</b>	<b>79.00</b>
2½"	2½"	<b>FM25S25F</b>	<b>44.85</b>
3"	2½"	<b>FM30S25F</b>	<b>82.95</b>

Female NPSH Thread	Male NPSH Thread	Part #	Price / Ea
2"	1½"	<b>FM20S15</b>	<b>\$57.85</b>

Female NST (NH)Thread	Male NPT Thread	Part #	Price / Ea
1"	1"	<b>FM10F10T</b>	<b>\$30.00</b>
1½"	1½"	<b>FM15F15T</b>	<b>19.15</b>
1½"	2"	<b>FM15F20T</b>	<b>27.80</b>
1½"	2½"	<b>FM15F25T</b>	<b>59.15</b>
2½"	¾"	<b>FM25F75T</b>	<b>60.65</b>
2½"	1"	<b>FM25F10T</b>	<b>60.65</b>
2½"	1½"	<b>FM25F15T</b>	<b>67.20</b>
2½"	2"	<b>FM25F20T</b>	<b>66.00</b>
2½"	2½"	<b>FM25F25T</b>	<b>46.00</b>
2½"	3"	<b>FM25F30T</b>	<b>84.75</b>
3"	2½"	<b>FM30F25T</b>	<b>85.15</b>
3"	3"	<b>FM30F30T</b>	<b>130.00</b>
4"	4"	<b>FM40F40T</b>	<b>329.30</b>
4½"	4"	<b>FM45F40T</b>	<b>484.10</b>

Female NPT Thread	Male NPT Thread	Part #	Price / Ea
3"	2½"	<b>FM3025T</b>	<b>\$89.45</b>

Female NST (NH)Thread	Male NST (NH)Thread	Part #	Price / Ea
1½"	1½"	<b>FM15F15F</b>	<b>\$19.15</b>
1½"	2½"	<b>FM15F25F</b>	<b>57.60</b>
1½"	3"	<b>FM15F30F</b>	<b>90.55</b>
2½"	2½"	<b>FM25F25F</b>	<b>46.00</b>
2½"	3"	<b>FM25F30F</b>	<b>80.70</b>



### Brass Double Males with Pin Lugs



Cast brass finish

Male NPSH Thread	Male NPSH Thread	Part #	Price	Male NST (NH)Thread	Male NPSH Thread	Part #	Price
1½"	1½"	<b>DMP1515</b>	<b>\$45.70</b>	2½"	2½"	<b>DMP25F25S</b>	<b>\$90.30</b>
2½"	2½"	<b>DMP2525</b>	<b>90.30</b>				

Male NST (NH)Thread	Male NST (NH)Thread	Part #	Price	Male NST (NH)Thread	Male NPT Thread	Part #	Price
1½"	1½"	<b>DMP1515F</b>	<b>\$45.70</b>	1½"	1½"	<b>DMP15F15T</b>	<b>\$46.65</b>
2½"	2½"	<b>DMP2525F</b>	<b>90.30</b>	2½"	2½"	<b>DMP25F25T</b>	<b>92.60</b>

### Brass Double Males with Rocker Lugs

Cast brass finish

Male NST (NH)Thread	Male NST (NH)Thread	Part #	Price / Ea
1½"	1½"	<b>DMR1515F</b>	<b>\$45.70</b>
2½"	2½"	<b>DMR2525F</b>	<b>90.30</b>

Male NST (NH)Thread	Male NPT Thread	Part #	Price / Ea
1½"	1½"	<b>DMR15F15T</b>	<b>\$46.65</b>

Male NPSH Thread	Male NPSH Thread	Part #	Price / Ea
1½"	1½"	<b>DMR1515</b>	<b>\$45.70</b>
2½"	2½"	<b>DMR2525</b>	<b>90.30</b>



### Aluminum Double Males with Rocker Lugs

Extruded aluminum

Male NST (NH)Thread	Male NST (NH)Thread	Part #	Price / Ea
1½"	1½"	<b>ADMR15F15F</b>	<b>\$40.55</b>
2½"	2½"	<b>ADMR25F25F</b>	<b>49.15</b>

Male NPSH Thread	Male NPSH Thread	Part #	Price / Ea
1"	1"	<b>ADMR10S10S</b>	<b>\$44.25</b>

Male NPT Thread	Male NST (NH)Thread	Hardcoated		Powder Coated	
		Part #	Price / Ea	Part #	Price / Ea
1½"	1½"	<b>ADMR1515F</b>	<b>\$40.55</b>	<b>PDMR1515F</b>	<b>\$36.00</b>
2½"	2½"	<b>ADMR2525F</b>	<b>49.15</b>	<b>PDMR2525F</b>	<b>50.00</b>
3"	2½"	<b>ADMR3025F</b>	<b>143.20</b>	---	---
6"	6"	<b>ADMR6060F</b>	---	<b>PDMR6060F</b>	<b>345.00</b>

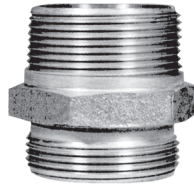


- Other styles and sizes are also available
- Not all configurations are stocked
- Consult the factory for pricing and availability

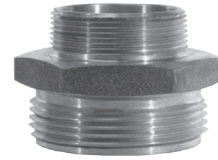
## Brass Double Male Hex Nipples



Reducer



Same Size



Increaser

Male NPT Thread	Male NPSH Thread	Part #	Price / Ea
1"	¾" GHT	<b>DMH1076</b>	<b>\$18.65</b>
1"	1"	<b>DMH1010</b>	<b>18.75</b>
1"	1½"	<b>DMH1015</b>	<b>33.00</b>
1½"	1"	<b>DMH1510</b>	<b>33.00</b>
1½"	1½"	<b>DMH1515</b>	<b>21.40</b>
1½"	2"	<b>DMH1520</b>	<b>42.55</b>
2"	1½"	<b>DMH2015</b>	<b>42.55</b>
2"	2"	<b>DMH2020</b>	<b>36.45</b>
2"	2½"	<b>DMH2025</b>	<b>58.55</b>
2½"	2"	<b>DMH2520</b>	<b>55.75</b>
2½"	2½"	<b>DMH2525</b>	<b>42.00</b>
2½"	3"	<b>DMH2530</b>	<b>91.65</b>
3"	2½"	<b>DMH3025</b>	<b>91.65</b>
3"	3"	<b>DMH3030</b>	<b>127.00</b>
4"	4"	<b>DMH4040</b>	<b>149.55</b>

Male NPT Thread	Male NST (NH) Thread	Part #	Price / Ea
¾"	1½"	<b>DMH7515F</b>	<b>\$34.55</b>
1"	1"	<b>DMH1010F</b>	<b>18.75</b>
1"	1½"	<b>DMH1015F</b>	<b>33.00</b>
1"	2½"	<b>DMH1025F</b>	<b>57.95</b>
1½"	1"	<b>DMH1510F</b>	<b>33.00</b>
1½"	1½"	<b>DMH1515F</b>	<b>21.40</b>
1½"	2½"	<b>DMH1525F</b>	<b>58.30</b>
2"	1½"	<b>DMH2015F</b>	<b>42.55</b>
2"	2½"	<b>DMH2025F</b>	<b>58.55</b>
2½"	1½"	<b>DMH2515F</b>	<b>58.30</b>
2½"	2½"	<b>DMH2525F</b>	<b>42.00</b>
2½"	3"	<b>DMH2530F</b>	<b>91.65</b>
3"	2½"	<b>DMH3025F</b>	<b>91.65</b>
3"	3"	<b>DMH3030F</b>	<b>127.00</b>
4"	4"	<b>DMH4040F</b>	<b>149.55</b>
4"	4½"	<b>DMH4045F</b>	<b>198.15</b>
5"	5"	<b>DMH5050F</b>	<b>250.00</b>
6"	4½"	<b>DMH6045F</b>	<b>756.15</b>
6"	6"	<b>DMH6060F</b>	<b>310.00</b>

Male NST (NH) Thread	Male NST (NH) Thread	Part #	Price / Ea
1½"	1½"	<b>DMH15F15F</b>	<b>\$21.40</b>
1½"	2½"	<b>DMH15F25F</b>	<b>61.25</b>
2½"	2½"	<b>DMH25F25F</b>	<b>42.00</b>
2½"	3"	<b>DMH25F30F</b>	<b>91.65</b>

Male NPT Thread	Male NPT Thread	Part #	Price / Ea
1½"	1½"	<b>DMH15T15T</b>	<b>\$21.40</b>
2½"	3"	<b>DMH25T30T</b>	<b>91.65</b>

Male NST (NH) Thread	Male NPSH Thread	Part #	Price / Ea
1½"	1½"	<b>DMH15F15S</b>	<b>\$21.40</b>

## Brass Double Male Hex Coupling with Screen



Male Thread	Male Thread	Part #	Price/E
3" NPT	2½" NST (NH)	<b>DMH3025F-WS</b>	<b>\$134.60</b>

## Constant Flow Thermoplastic Fog Nozzles



- Factory Mutual approved
- Red polycarbonate with bumper, black plastic and steel stem
- Adjusts from straight stream to fog

- 1" and 1½" are ULC listed
- For use up to **100 PSI** (*water only*)
- Provides consistent volume at any spray angle



2½" provided with handles



1" thru 2"

Size	Thread	90° Spray GPM@ 100 PSI	Part #	Price / Ea
¾"	GHT	8	<b>CFB75GHT</b>	<b>\$28.00</b>
1"	SIPT (NPSH)	22	<b>CFB100S</b>	<b>28.40</b>
1½"	SIPT (NPSH)	75	<b>CFB150S</b>	<b>23.30</b>
1½"	SIPT (NPSH)	150	<b>HGCFB150S</b>	<b>69.85</b>
2" *	SIPT (NPSH)	75	<b>CFB2015S</b>	<b>53.05</b>
2" **	SIPT (NPSH)	150	<b>CFB200S</b>	<b>73.45</b>
1"	NST (NH)	22	<b>CFB100NST</b>	<b>\$28.40</b>
1½"	NST (NH)	75	<b>CFB150NST</b>	<b>23.30</b>
1½"	NST (NH)	150	<b>HGCFB150NST</b>	<b>69.85</b>
2½"	NST (NH)	150	<b>CFB250NST</b>	<b>149.05</b>
2½"	NST (NH)	215	<b>HGCFB250NST</b>	<b>167.75</b>

\* Standard flow

\*\* High flow

## Blue Thermoplastic Refinery Fog Nozzles



- Bumper and black plastic and steel stems
- Glass-filled
- Provides consistent volume at any spray angle
- Adjusts from straight stream to fog
- Resistant to petrochemicals
- Factory Mutual approved
- For use up to **100 PSI** (*water only*)

Size	Thread	GPM @ 100 PSI	Part #	Price/Ea
1½"	SIPT	75	<b>RNB150S</b>	<b>\$29.35</b>
1½"	NST (NH)	75	<b>RNB150NST</b>	<b>29.35</b>

## Gaskets

For Constant Flow and Refinery Nozzles

*All dimensions are nominal.*



Size	Thread Type	Dimensions			Part #	Price/ Each
		I.D.	O.D.	Thickness		
1"	SIPT (NPSH)	.900"	1.270"	.125"	<b>CFG100S</b>	<b>\$2.45</b>
1½"	SIPT (NPSH)	1.510"	1.878"	.125"	<b>CFG150S</b>	<b>2.50</b>
2"	SIPT (NPSH)	1.680"	2.340"	.156"	<b>CFG200S</b>	<b>2.60</b>
1"	NST (NH)	.900"	1.270"	.125"	<b>CFG100NST~</b>	<b>2.45</b>
1½"	NST (NH)	1.510"	1.906"	.125"	<b>CFG150NST</b>	<b>2.50</b>
2½"	NST (NH)	2.250"	3.000"	.187"	<b>CFG250NST</b>	<b>2.75</b>

## Thermoplastic Ball Shut-Off



- Lightweight
- Glass reinforced plastic
- Black pistol grip handle
- For use with water or AFFF only

Size	Thread	Part #	Price / Ea
1½"	SIPT	<b>PPSO150S</b>	<b>\$277.05</b>
1½"	NST (NH)	<b>PPSO150F</b>	<b>277.05</b>





## Thermoplastic Fog Nozzles

- Red polycarbonate with brass stem
- For use up to **100 PSI (water only)**
- Adjusts from straight stream to fog

Size	Thread	90° Spray GPM @ 100 PSI	Part # with Bumper	Price/E	Part # without Bumper	Price/E
¾"	GHT	30.9 **	<b>FNB75GHT</b>	\$31.25	---	---
¾"	NPS	30.9 **	<b>FNB75S</b>	31.25	---	---
1"	NPS	11.4	<b>FNB100S</b>	37.85	<b>FN100S</b>	\$35.40
1"	NPS	30.9 **	<b>HGB100S</b>	36.50	---	---
1½"	NPS	83.6	<b>FNB150S</b>	32.45	<b>FN150S</b>	30.80
1"	NST (NH)	11.4	<b>FNB100NST</b>	37.85	---	---
1"	NST (NH)	30.9 **	<b>HGB100NST</b>	36.50	---	---
1½"	NST (NH)	83.6	<b>FNB150NST</b>	32.45	<b>FN150NST</b>	30.80



For cabinet use

\*\* 120° spray for ¾" nozzles

## Thermoplastic Fog Nozzles for Electrical Fires

Size	Thread	75° Spray GPM @ 100 PSI	Part # with Bumper	Price / Ea
1½"	NPS	92	<b>FNBE150S</b>	\$32.45
1½"	NST (NH)	92	<b>FNBE150NST</b>	32.45



Fog only †

† Opens and closes in a 30° fog pattern - up to 120°.

## Gaskets for Thermoplastic Nozzles

All dimensions are nominal

Size	Thread Type	Dimensions			Part #	Price / Ea
		I.D.	O.D.	Thickness		
1"	NPS	.937"	1.234"	.125"	<b>FNG100S</b>	\$3.70
1"	NPS	1.000"	1.375"	.125"	<b>HGG100S</b>	3.70
1½"	NPS	1.500"	1.828"	.125"	<b>FNG150S</b>	2.75
1"	NST (NH)	.937"	1.281"	.125"	<b>FNG100NST</b>	3.70
1"	NST (NH)	1.000"	1.375"	.125"	<b>HGG100NST</b>	3.70
1½"	NST (NH)	1.500"	1.906"	.125"	<b>FNG150NST</b>	2.75



J

## Thermoplastic Ball Shut-Off Nozzles

- Lightweight
- Glass reinforced plastic
- Black pistol grip handle
- For use up to **200 PSI** (water or AFFF only)
- Yellow nozzle tip can be detached to allow for installation of foam inductor

Size	Thread	GPM	Part #	Price / Ea
1½"	SIPT	30	<b>FNPSO150S-30</b>	\$341.20
1½"	NST (NH)	30	<b>FNPSO150F-30</b>	341.20
1½"	SIPT	70	<b>FNPSO150S-70</b>	341.20
1½"	NST (NH)	70	<b>FNPSO150F-70</b>	341.20





### Brass Industrial Fog Nozzles



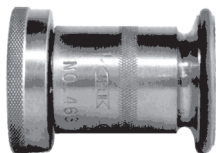
- Shut off - Straight stream - Fog
- Delivers 30°-60°-90° fog pattern
- Supplied with bumper
- U/L listed and Factory Mutual approved for Class A and B fires. (except noted sizes)
- For use up to **100 PSI (water only)**

Size	Thread	90° Spray GPM @ 100 PSI	Part #	Price/Ea
¾" *	GHT	---	<b>BFN75GHT *</b>	<b>\$112.65</b>
¾"	NPSH	---	<b>BFN75</b>	<b>112.65</b>
1"	NPSH	36	<b>BFN100</b>	<b>131.55</b>
1½"	NPSH	85	<b>BFN150</b>	<b>74.80</b>
2" *	NPSH	108	<b>BFN200 *</b>	<b>197.25</b>
1"	NST (NH)	36	<b>BFN100NST</b>	<b>131.55</b>
1½"	NST (NH)	85	<b>BFN150NST</b>	<b>74.80</b>
2½" *	NST (NH)	205	<b>BFN250NST *</b>	<b>242.80</b>

\* Not FM Approved



### Brass Industrial "All-Fog" Nozzles



Use of this nozzle is not likely to prove hazardous when nozzle is held in excess of 10 ft. from **electrical** apparatus and circuits not involving more than 250,000 volts.

- **No Straight Stream**
- From shut off to 30° fog, adjustable thru 90° fog
- Supplied with bumper
- "ALL-FOG" Listed by U/L for Class C fires
- For use up to **100 PSI (water only)**

Size	Thread	90° Spray GPM @ 100 PSI	Part #	Price/E
1½"	NST (NH)	90	<b>BFNE150NST~</b>	<b>\$147.45</b>



### Heavy Duty Brass Nozzles

- Shut off - Straight stream - Fog
- Delivers 30°-60°-90° Fog pattern
- Supplied with bumper

- U/L listed and Factory Mutual approved
- For use up to **100 PSI (water only)**



Size	Thread	90° Spray GPM @ 100 PSI	Part #	Price / Ea
1"	NPSH	---	<b>HFN100</b>	<b>\$138.20</b>
1½"	NPSH	88 (+/-12)	<b>HFN150</b>	<b>109.30</b>
1"	NST (NH)	---	<b>HFN100NST</b>	<b>138.20</b>
1½"	NST (NH)	88 (+/-12)	<b>HFN150NST</b>	<b>109.30</b>



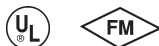
### Higher Pressure Brass Industrial Fog Nozzles

- Combination straight stream and fog
- Shut off - Straight stream - Fog
- Operating pressure from **25 PSI to 300 PSI (water only)**

- Large one-piece rubber bumper with molded teeth
- Knurled base
- Factory Mutual approved



Size	Thread	90° Spray GPM @ 100 PSI	Part #	Price / Each
1½"	NPSH	117	<b>HPFN150</b>	<b>\$135.45</b>
1½"	NST (NH)	117	<b>HPFN150NST</b>	<b>135.45</b>



### Brass Rack Nozzles

- Shut off - Straight stream - Fog
- Delivers 30°-60°-90° fog pattern
- Supplied without bumper

- U/L listed for Class A and B fires
- Factory Mutual approved
- For use up to **100 PSI (water only)**



Size	Thread	90° Spray GPM @ 100 PSI	Part #	Price / Each
1½"	NST (NH)	80	<b>BRN150NST</b>	<b>\$65.40</b>

## Aluminum Fog Nozzles

- Supplied without bumper
- For cabinet use
- Discourages theft
- Weight: 12 oz.
- Factory Mutual approved
- Rugged, lightweight, corrosion resistant nozzle
- Manufactured from extruded aluminum

Size	Thread	60° Spray GPM @ 100 PSI	Part #	Price / Ea
1½"	NPS	52	<b>AFN150</b>	<b>\$197.40</b>
1½"	NST (NH)	52	<b>AFN150NST</b>	<b>197.40</b>



## Forestry Fog Nozzles

- 6061-T6 aluminum, corrosion resistant plated
- Maroon hardcoated barrel allows for easy identification
- Offers two straight stream and two fog patterns
- Combination fog and straight stream
- Dual flow rate nozzles
- Operating pressure up to **600 PSI (water only)**



**FFN75GHT**

**FFN100**

**FFN150NST**

Size	Thread	Dual Flow Rates		NSN	Forestry Service Specification	Part #	Price / Each
		1st Straight Stream GPM @ 100 PSI	2nd Straight Stream GPM @ 100 PSI				
¾"	GHT	1-2*	3-4*	---	---	<b>FFN75GHT~</b>	<b>\$83.50</b>
1"	NPSH	12	25	4210-01-165-6603	5100-239A	<b>FFN100</b>	<b>122.50</b>
1½"	NPSH	25	70	---	5100-107A	<b>FFN150</b>	<b>245.05</b>
1"	NST (NH)	12	25	---	5100-239A	<b>FFN100NST</b>	<b>122.50</b>
1½"	NST (NH)	25	70	4210-01-167-1123	5100-107A	<b>FFN150NST</b>	<b>245.05</b>

\* GPM rating @ 40 PSI

## Ball Shut-Off Nozzles - Forestry Grade

- Cast aluminum, anodized body, hardcoated threads, and acetal ball.
- Working pressure up to **600 PSI 1" - 1½"**; **400 PSI 2½"**

Size	Thread	Waterway	Part #	Price / Each
1"	NPSH	¾"	<b>FBSO100S</b>	<b>\$210.00</b>
1½"	NPSH	1"	<b>FBSO150S</b>	<b>225.00</b>
1"	NST (NH) NST	¾"	<b>FBSO100F</b>	<b>210.00</b>
1½"	(NH)	1"	<b>FBSO150F</b>	<b>225.00</b>
2½"	NST (NH)	2½"	<b>FBSO250F</b>	<b>500.00</b>



## Aluminum Ball Shut-Off Nozzle - Bolted Style

- Lightweight cast aluminum body with pistol grip.
- Hardcoated female swivel inlet and male outlet.
- Maximum operating pressure to **200 PSI (water only)**

Inlet Thread	Outlet Thread	Waterway	Part #	Price / Ea
1½" Female NST (NH)	1½" Male NST (NH)	1-3/8"	<b>ACPSO150F</b>	<b>\$286.65</b>

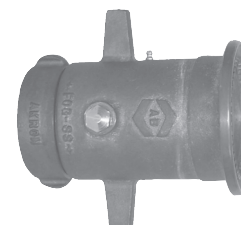


## Monitor Nozzle

Aquastream™ Master Stream, a fixed gallonage master stream designed for heavy-duty use on fixed monitors. Factory set at 500 gpm (1900 lpm) - can be changed in the field to 300 or 700 gpm (1140 or 2660 lpm). Operating pressure: **100 PSI (water only)**

- Brass construction
- Fixed teeth
- Swivel nut

Size	Thread	Length	Weight	Part #	Price / Ea
2½"	NST	7"	14.5 lbs.	<b>AK4450NST</b>	<b>\$1102.50</b>



## U.S. Coast Guard Approved AFFF/Water Fog Nozzles

Nozzles designed for maximum efficiency with AFFF (Aqueous Film Forming Foams) or water on shipboard, offshore rigs and industrial applications.



- Corrosion resistant brass construction
- Zytel® (nylon) horseshoe handle
- Flush without shutting down
- Constant gallonage in all fog and straight stream pattern
- Rubber-like bumper and handle for added protection
- Double row of molded teeth for excellent fog patter.
- Combination fog and straight stream
- Operating pressure up to **100 PSI (water and AFFF only)**

Size	Thread	Description	Fog Flow @100 PSI	Orifice	Length	Weight	Approval #	Part #	Price / Ea
1½"	NST(NH)	Nozzle	95 GPM	5/8"	10¼"	9 lbs.	162.027/13/0	<b>CGSN150F</b>	<b>\$1267.90</b>
1½"	NST(NH)	Nozzle w/pistol grip	95 GPM	15/16"	11½"	14.5 lbs.	162.027/11/0	<b>CGSN151F</b>	<b>1378.15</b>

## U.S. Coast Guard Approved Fog Nozzles

- Designed to U.S. Coast Guard specification for fighting fires with drafted water
- Required equipment for all commercial vessels under U.S. registry
- Corrosion resistant brass construction
- Combination fog and straight stream for shipboard fire fighting
- Operating pressure up to **100 PSI (water only)**

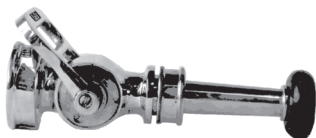


Size	Thread	Fog Flow @100 PSI	Approval #	Part #	Price / Ea
1½"	NST(NH)	55 GPM	162.027/9/0	<b>CGN150NST~</b>	<b>\$1207.50</b>
2½"	NST(NH)	108 GPM	162.027/10/0	<b>CGN250NST~</b>	<b>1417.50</b>

Applicators are available on special order. Consult the factory for pricing and availability.

## Brass Shut-Off Nozzles

- For use up to **100 PSI (water only)**
- Straight stream only
- Polished brass finish



Base Thread	Tip Thread	GPM @ 100 PSI*	Orifice	Length with Tip	Part #	Price/E
1½" NPSH	1" NST (NH)	74	½"	9"	<b>BSN150</b>	<b>\$744.35</b>
1½" NST	1" NST (NH)	74	½"	9"	<b>BSN150NST</b>	<b>744.35</b>
Replacement Handle					<b>BSN150-H</b>	<b>95.55</b>

\* Flow rate with standard ½" orifice tip

## Ball Shut-Off Nozzles

- Full time swivel base assures the durable rubber-like handle can be positioned for easy operation.
- For use up to **100 PSI (water only)**



Base Thread	Tip Thread	Waterway	Length	Brass Part #	Price/E
1½" NST (NH)	1½" NST (NH)	1-3/8"	4¾"	<b>BSO150NST</b>	<b>\$771.75</b>
Replacement Handle				<b>BSO150-H</b>	<b>54.60</b>

## Nozzle Tips

For use up to **100 PSI (water only)**



Size	Thread	GPM @ 100 PSI	Orifice	Length	Tip Part #	Price / Ea
1"	NST (NH)	74	½"	4-3/4"	<b>BNT100F</b>	<b>\$95.95</b>
1½"	NST (NH)	74	½"	4-3/8"	<b>BNT150F</b>	<b>209.50</b>

### Brass Plain Hose Nozzles

- Operating pressure up to **100 PSI (water only)**

Size	Thread	Length	Orifice	Part #	Price / Each
3/4"	GHT	6"	1/4"	<b>BN6</b>	<b>\$27.95</b>
3/4"	NPSH	6"	1/4"	<b>BN7</b>	<b>31.25</b>
1"	NPSH	8"	5/16"	<b>BN10</b>	<b>35.20</b>
1 1/4"	NPSH	10"	3/8"	<b>BN12</b>	<b>52.40</b>
1 1/2"	NPSH	10"	1/2"	<b>BN15</b>	<b>48.10</b>
2"	NPSH	12"	9/16"	<b>BN20</b>	<b>122.95</b>
2 1/2"	NPSH	12"	1"	<b>BN25</b>	<b>134.70</b>
1 1/2"	NST (NH)	10"	1/2"	<b>BN15F</b>	<b>48.10</b>
2 1/2"	NST (NH)	12"	1"	<b>BN25F</b>	<b>134.70</b>



Brass with satin finish

### Thermoplastic Plain Hose Nozzles

- Thermoplastic
- Red finish
- For use up to **100 PSI (water only)**

Size	Thread	Length	Orifice	Part #	Price / Each
1 1/2"	NPS	10"	1/2"	<b>PN15</b>	<b>\$15.00</b>
1 1/2"	NST (NH)	10"	1/2"	<b>PN15F</b>	<b>15.00</b>



### Straight Stream Forestry Nozzles

- Base nozzle has a 1/2" orifice
- One piece reversible twin tips have 1/4" and 3/8" orifices.
- Overall length with tip: 9"
- Overall length without tip: 7-1/8"
- For use up to **100 PSI (water only)**

Size	Part #	Price / Each
1 1/2" NPSH	<b>PTTF150S</b>	<b>\$23.70</b>
1 1/2" NST (NH)	<b>PTTF150F</b>	<b>23.70</b>



### Thermoplastic Penetrator Nozzle

- For use up to **200 PSI (water only)**

Size	Orifice	Part #	Price / Each
1 1/2" NST (NH)	1/4"	<b>PFN4005F</b>	<b>\$29.10</b>



### U/L Play Pipe with Tip **NEW**

A component often required in hydrant houses by Insurance Underwriters.

- Swivel handle, red marlin trim
- For use up to **100 PSI (water only)**
- U/L listed and FM approved



Size	Female inlet	Male outlet	Orifice	Part #	Price / Each
2-1/2"	NH (NST)	ULT	1-1/8"	<b>UPP250F</b>	<b>\$718.35</b>



ULT thread 2-3/16" ODM x 12 tpi

## Storz Fittings

### Storz x Female Swivel



- 6061-T6 lightweight aluminum with a coated finish
- Rocker lug

Storz x Female Swivel	Part #	Price / Each
4" x 2½" NST	<b>SZSF4025F</b>	\$262.05
4" x 4" NST	<b>SZSF4040F</b>	413.20
4" x 4½" NST	<b>SZSF4045F</b>	425.20
5" x 2½" NST	<b>SZSF5025F</b>	435.00
5" x 4" NST	<b>SZSF5040F</b>	460.70
5" x 4½" NST	<b>SZSF5045F</b>	439.00

### Storz x Rigid Male



- 6061-T6 lightweight aluminum with a coated finish

Storz x Rigid Male	Part #	Price / Each
2½" x 2½" NST	<b>SZM2525F</b>	\$98.70
4" x 2½" NST	<b>SZM4025F</b>	233.95
5" x 2½" NST	<b>SZM5025F</b>	305.55
5" x 4½" NST	<b>SZM5045F</b>	363.00

### Storz x Rigid Female



- 6061-T6 lightweight aluminum with a coated finish

Storz x Rigid Female	Part #	Price / Each
4" x 2½" NST	<b>SZF4025F</b>	\$243.50
5" x 2½" NST	<b>SZF5025F</b>	319.85
5" x 4½" NST	<b>SZF5045F</b>	378.35
5" x 4" NPT	<b>SZF5040T</b>	390.95
5" x 5" NPT	<b>SZF5050T</b>	405.45
5" x 6" NPT	<b>SZF5060T</b>	440.30

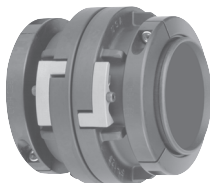
### Storz Cap with Cable



- 6061-T6 lightweight aluminum with a coated finish
- Supplied with chain/cable

Storz Cap with Cable	Part #	Price / Each
4"	<b>SZC400</b>	\$120.35
5"	<b>SZC500</b>	161.20

### Storz x Reattachable Hose Coupling

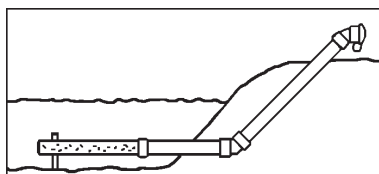


- Anodized aluminum
- For rubber soft suction fire hose
- Collar segments are held in place with allen screws. These should be properly tightened and checked annually.

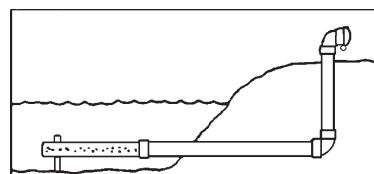
Storz x Reattachable Hose Coupling	Part #	Price / Each
4"	<b>ACT40RB40SZ</b>	\$389.50
5"	<b>ACT50RB50SZ</b>	488.55

## Dry Hydrants

Typical Dry Hydrant Installations



45°  
(preferred)



90°

### Underwater Strainer Support

Description	Part #	Price / Ea
Underwater Strainer Support	DHSSC6~	\$59.30



### Back Flushing Strainer

Description	Part #	Price / Ea
37", PVC	DHS6BF	\$337.95



### Rocker Lug Caps with Cable Attached

NST (NH)	Hardcoated Part #	Price / Ea
4½"	ADHC450F	\$108.25
6"	ADHC600F	114.85



### Male Adapters

Made from extruded aluminum and 6" PVC elbows

#### 45° Male Adapters

Male NST (NH)	Hardcoated Part #	Price / Ea
4½"	ADH45M45F~	\$371.55
6"	ADH45M60F~	391.25

#### 90° Male Adapters

Male NST (NH)	Hardcoated Part #	Price / Ea
4½"	ADH90M45F	\$371.55
6"	ADH90M60F	391.25



90° Adapter

Other sizes, threads and Storz ends are also available. Consult the factory for pricing and availability.

## Weatherproof First Aid Kit **NEW**

- Polypropylene case
- Each kits includes:  
adhesive strips, large wound pads, eye pads, triangular bandage, first aid / burn cream, eye flush, elastic bandages, scissors, forceps, first aid instructions, gauze pads, adhesive tape, antiseptic towelettes, aspirin, cold pack, latex exam gloves

# of persons kit supports	Part #	Wt. Lbs.	Price / Each
25	FAK25P	1.8	\$60.15



10 Person and 50 person kits are also available. Consult the factory for price and availability.