

King Combination Nipples

**SAFETY
ALERT**

- Combination nipples are recommended for low-pressure discharge and suction service for compatible liquids. **They are not for compressible products such as air or nitrogen on sizes 1¼" and above.**
- **King Combination Nipples are not recommended for steam.**
- *The working pressure may vary with the construction of the hose, the type of clamping system used and the application. Consult the factory for recommendations.*
- In accordance with the R.M.A. bulletin for oil suction and discharge hose, a coupled length of hose in any size, should be tested to 1½ times the working pressure and held for fifteen minutes without leaking or coupling movement. For additional information and detailed instruction on testing procedures, see the Rubber Manufacturers Association's (R.M.A.) handbook.



**NPT threaded end
with knurled wrench grip**

Size	Unplated Steel			Plated Steel			Brass		Aluminum		Pkg Qty
	Part #	Price/E	Pkg Qty	Part #	Price/E	Pkg Qty	Part #	Price/E	Part #	Price/E	
½"	ST1	\$2.60	50	STC1	\$2.85	50	BST1	\$9.20	AST1	\$10.10	50
¾"	ST5	2.70	50	STC5	3.10	50	BST5	13.15	AST5	9.55	50
1"	ST10	3.25	50	STC10	3.75	50	---	---	---	---	---
1¼"	ST15	4.35	50	STC15	4.95	50	---	---	---	---	---
1½"	ST20	4.95	50	STC20	5.60	50	---	---	---	---	---
2"	ST25	5.75	25	STC25	6.90	25	---	---	---	---	---



**NPT threaded end
no knurl**

Size	Brass		Aluminum		Pkg Qty	316 Stainless Steel		Pkg Qty	Hastelloy		Pkg Qty
	Part #	Price/E	Part #	Price/E		Part #	Price/E		Part #	Price/E	
½"	---	---	---	---	---	RST1	\$14.25	50	---	---	---
¾"	---	---	---	---	---	RST5	12.50	50	---	---	---
1"	BST10	\$13.25	AST10	\$9.60	50	RST10	14.30	50	---	---	---
1¼"	BST15	16.80	AST15	12.20	50	RST15	16.80	50	---	---	---
1½"	BST20	18.70	AST20	11.60	50	RST20	19.00	50	---	---	---
2"	BST25	27.55	AST25	13.70	25	RST25	27.25	25	HST25	\$330.00	---



**NPT threaded end
no knurl**

Size	Unplated Steel			Plated Steel			Brass	
	Part #	Price/E	Pkg Qty	Part #	Price/E	Pkg Qty	Part #	Price/E
2½"	ST30	\$11.70	10	STC30	\$12.70	10	BST30	\$47.75
3"	ST35	13.70	10	STC35	15.80	10	BST35	65.00
4"	ST40	21.25	5	STC40	24.40	5	BST40	128.00
5"	ST50	48.00	4	STC50	52.00	4	---	---
6"	ST60	53.50	2	STC60	60.25	2	---	---
8"	ST80	91.00	2	STC80	110.00	2	---	---
10"	ST100	167.00	1	STC100	188.00	1	---	---
12"	ST120	225.00	1	STC120	295.00	1	---	---

Size	Aluminum			316 Stainless Steel			Hastelloy	
	Part #	Price/E	Pkg Qty	Part #	Price/E	Pkg Qty	Part #	Price/E
2½"	AST30	\$35.00	10	RST30	\$55.00	10	---	---
3"	AST35	32.25	10	RST35	75.00	10	HST35	\$530.00
4"	AST40	49.50	5	RST40	109.00	5	---	---
5"	AST50	112.00	4	RST50	288.00	4	---	---
6"	AST60	126.00	2	RST60	300.00	2	---	---
8"	---	---	---	RST80	480.00	2	---	---

Optional Pkg./Box Quantity Shown

King Combination Nipples

Beveled end

Size	Unplated Steel		Pkg Qty	316 Stainless Steel		Pkg Qty
	Part #	Price/E		Part #	Price/E	
1/2"	STB1	\$3.05	50	---	---	---
3/4"	STB5	3.35	50	RSTB5	\$16.50	50
1"	STB10	3.40	50	RSTB10	15.50	50
1 1/4"	STB15	4.50	50	RSTB15	23.55	50
1 1/2"	STB20	4.55	50	RSTB20	20.00	50
2"	STB25	5.80	25	RSTB25	28.90	25
2 1/2"	STB30	11.50	10	RSTB30	61.50	10
3"	STB35	13.65	10	RSTB35	77.00	10
4"	STB40	20.75	5	RSTB40	110.00	5
5"	STB50	44.95	4	---	---	---
6"	STB60	52.40	2	RSTB60	315.00	---
8"	STB80	96.30	2	RSTB80	475.00	---
10"	STB100	177.00	1	---	---	---
12"	STB120	235.00	1	---	---	---



D

Grooved end

Size	Unplated Steel		Pkg Qty	316 Stainless Steel		Pkg Qty
	Part #	Price/E		Part #	Price/E	
1"	STV10	\$4.30	50	---	---	---
1 1/4"	STV15	5.35	50	---	---	---
1 1/2"	STV20	8.05	50	RSTV20	\$30.50	50
2"	STV25	7.40	25	RSTV25	35.00	25
2 1/2"	STV30	12.90	10	---	---	---
3"	STV35	16.25	10	RSTV35	99.75	10
4"	STV40	21.50	5	RSTV40	111.00	5
5"	STV50	53.30	4	---	---	---
6"	STV60	54.50	2	---	---	---
8"	STV80	105.00	2	---	---	---
10"	STV100	175.00	1	---	---	---
12"	STV120	254.00	1	---	---	---



* See pages 411-417 for our complete line of victaulic groove style fittings.

Optional Pkg./Box Quantity Shown

Grooved and beveled ends (in brass and aluminum) available in selected sizes. Consult Dixon for prices and availability.

NPT end - for plastic pipe with knurled wrench grip

Size	Plated Steel		Pkg Qty
	Part #	Price/E	
1/2"	SAP1	\$4.75	50
3/4"	SAP6	6.70	50
1"	SAP11	6.70	50
1 1/4"	SAP16	9.00	50
1 1/2"	SAP21	9.05	50
2"	SAP26	9.80	25



NPT end * - for plastic pipe no knurl

Size	Plated Steel		Pkg Qty
	Part #	Price/E	
2 1/2"	SAP31 ~	\$36.30	10
3"	SAP36	24.20	10
4"	SAP46	38.50	5
6"	SAP66	114.00	2

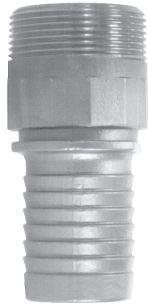


* Groove in part is for identification purposes.

External Swage Notched Stems and Ferrules

- When used with an appropriate notched ferrule, these fittings can be swaged or crimped onto hose, thereby providing improved shank retention.
For hose O.D.'s of 2-4/64" and below, these couplings are to be crimped only.
For hose O.D.'s of 2-5/64" and above, these couplings can be crimped or swaged.
- The stem can be removed from a damaged hose by cutting away the ferrule, without necessarily damaging the fitting. *After inspection to determine its suitability for reuse, it can be reinstalled into another hose by using a new ferrule.*
- Notched stems let you use the same ferrules used with the notched (NO) cam and groove and notched turned back nipples. This lets you maximize your inventory usage and reduce costs.

SAFETY
ALERT



Size	PSI	Stainless Steel		PSI	Plated Carbon Steel	
		Part #	Price/E		Part #	Price/E
1½"	250	RST150NOS	\$28.60	250	STC150NOS	\$15.50
2"	250	RST200NOS	33.60	250	STC200NOS	18.20
3"	250	RST300NOS	70.00	250	STC300NOS	33.00
4"	*	*RST400NOS *	110.00	*	STC400NOS	42.00

* Available April 2005, contact factory for pressure information.

Ferrules

NEW

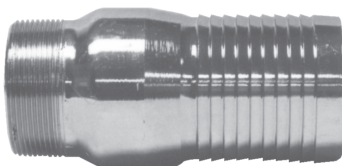


Size	Hose O.D.		304 Stainless Steel		Carbon Steel	
	From:	To:	Part #	Price/E	Part #	Price/E
1½"	1-60/64"	2-12/64"	GAS2334NOS	\$21.00	CAS2334NOS	\$11.60
1½"	2-4/64"	2-22/64"	GAS2370NOS	21.00	CAS2370NOS	11.60
2"	2-30/64"	2-44/64"	GAS2709NOS	20.00	CAS2709NOS	15.90
2"	2-42/64"	2-54/64"	GAS2885NOS	37.80	CAS2885NOS	15.90
3"	3-30/64"	3-46/64"	GAS3760NOS	30.75	CAS3760NOS	25.45
3"	3-47/64"	3-54/64"	GAS3885NOS	42.85	CAS3885NOS	25.45
4"	4-40/64"	4/47/64"	GAS5010NOS	68.00	CAS5010NOS	38.00

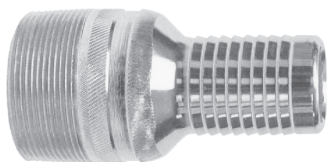
Jump Size King Combination Nipples

Stainless Steel

Plated Steel



Reducer



Increaser

Hose Shank	Male NPT	316 Stainless Steel	
		Part #	Price/E
¾"	½"	RST0501	\$22.50
¾"	1"	RST0510	30.00
1"	¾"	RST1005	21.40
1"	1¼"	RST1015	38.55
1¼"	1"	RST1510	48.15
1¼"	1½"	RST1520	54.60
1½"	1¼"	RST2015	55.65
1½"	2"	RST2025	64.20
2"	1½"	RST2520	64.20
2"	3"	RST2535	82.40
3"	2"	RST3525	90.95

Hose Shank	Male NPT	Plated Steel	
		Part #	Price/E
¾"	1"	STC0510	\$7.20
1"	¾"	STC1005	5.25
1"	1¼"	STC1015	9.50
1¼"	1"	STC1510	6.75
1¼"	1½"	STC1520	8.60
1½"	1¼"	STC2015	7.25
1½"	2"	STC2025	10.85
1¾"	2"	STC175200	15.40
2"	1½"	STC2520	14.20
2"	2½"	STC2530	20.20
2"	3"	STC2535	27.85
2½"	2"	STC3025	20.55
2½"	3"	STC3035	24.00
3"	2"	STC3525	31.70
3"	2½"	STC3530	26.65
3"	4"	STC3540	50.35
4"	3"	STC4035	56.20

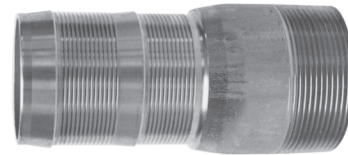
PF Shank King Combination Nipples

- PF shank King Combination nipples have the same shank pattern as found on the PF style cam and groove fittings sold on page 30. This shank design was developed specifically for chemical transport hoses having Crosslinked Polyethylene (XLPE) or Ultra High Molecular Weight Polyethylene (UHMW) tubes, where shank retention can be a problem when using conventional band clamps.
- Recommended for discharge and suction service.
- **Not intended for compressed air.**
- Working pressure is given at 70°F maximum.
- *The working pressure may vary with the construction of the hose, the type of clamping system used and the application. Consult the factory for recommendations.*



NPT end

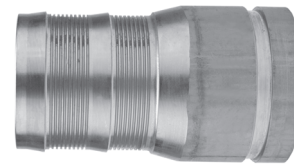
Size	Plated Steel			Stainless Steel		
	PSI	Part #	Price/E	PSI	Part #	Price/E
2"	250	ST25PF	\$20.00	250	RST25PF	\$45.15
3"	125	ST35PF	25.00	125	RST35PF	86.25
4"	100	ST40PF	36.75	100	RST40PF	120.00
6"	75	ST60PF	81.00	75	RST60PF *	250.00
8"	45	ST80PF	128.00	---	---	---
10"	25	ST100PF *	140.00	---	---	---



* Will be discontinued as inventory is depleted.
 Note: beveled ends for welding are also available. Contact the factory for further information.

Grooved end

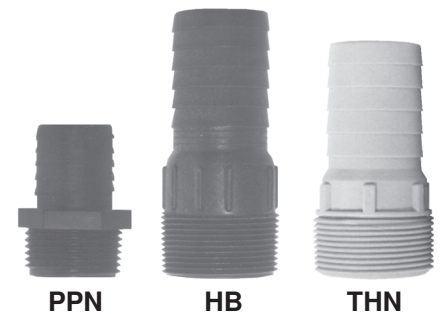
Size	Stainless Steel	
	Part #	Price
2"	RSTV25PF	\$62.00
3"	RSTV35PF	97.00



Tuff-Lite - King Combination Nipples

NPT end

Size	Polypropylene		Pkg Qty	Nylon		Pkg Qty
	Part #	Price/E		Part #	Price/E	
1/2"	PPN44 *	\$0.64	50	---	---	---
3/4"	PPN66 *	0.71	50	---	---	---
1"	PPN88 *	1.04	25	---	---	---
1 1/4"	---	--	--	THN15	\$4.85	25
1 1/2"	HB150	4.15	25	THN20	5.15	25
2"	HB200	5.25	24	THN25	9.00	25
3"	HB300	9.90	10	THN35	18.00	10
4"	HB400	31.25	--	---	---	---



* Sold in package quantities only.

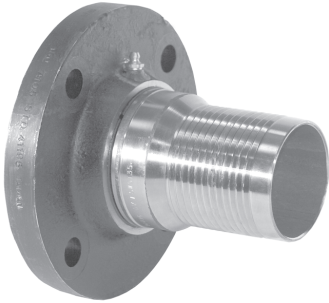
Flanged King Combination Nipples

- All parts are 150# ASA flange drilling

Size	Steel		Stainless Steel	
	Part #	Price/E	Part #	Price/E
1 1/2"	FST20	\$62.00	RFST20	\$161.70
2"	FST25	58.30	RFST25	191.40
3"	FST35	84.30	RFST35	275.00
4"	FST40	105.00	RFST40	385.00
6"	FST60	192.50	RFST60	638.00
8"	FST80	346.50	RFST80	1127.50
10"	FST100	495.00	RFST100 ~	2530.00
12"	FST120	693.00	RFST120	3100.00



End Seal Swivels



Developed for pressure service in applications where material entrapment, common to most swivel designs, makes it difficult to turn the swivel and causes contamination from load to load. End seal swivels are limited to the same working pressure as the King Combination nipple shank design.

- Low torque
- No gap between swivel housings
- Short overall length
- Replaceable bearings and wear surfaces
- Chemically resistant Teflon® encapsulated seal is standard
- Pressure ratings at ambient temperature (70°F).

Size	Number of Preformed Clamps	Maximum Working Pressure PSI			<i>Carbon Steel</i>		<i>Stainless Steel</i>	
		Water Hose	Petroleum Hose	Chemical Hose (Rubber, XLPE, or UHMWPE Lined)	Part #	Price/E	Part #	Price/E
2"	2	75	75	75	FSWST25	\$220.50	FSWRST25	\$420.00
3"	3	50	50	50	FSWST35	266.70	FSWRST35	550.00
4"	3	50	50	50	FSWST40	297.00	FSWRST40	775.00

End seal swivels with other shank designs can be produced capable of up to a 250 PSI working pressure, limited by the lowest pressure rated component in the hose assembly which is often the shank design. Consult the factory for cost and availability.

Notched Turned Back Nipples

SAFETY
ALERT

- When used with an appropriate notched ferrule, these fittings can be swaged or crimped onto hose, thereby providing improved shank retention.
- The stem can be removed from a damaged hose by cutting away the ferrule, without necessarily damaging the fitting. *After inspection to determine its suitability for reuse, it can be reinstalled into another hose by using a new ferrule.*
- When used with double bolt or band clamps, notched turned back nipples will provide shank retention similar to that of the King turned back nipples.
- Notched turned back nipples let you use the same ferrules used with the notched (NO) cam and groove. This lets you maximize your inventory usage and reduce costs.



Stems

Size	<i>Stainless Steel</i>		<i>Carbon Steel</i>	
	Part #	Price/E	Part #	Price/E
1½"	RN150NO	\$63.00	N150NO	\$21.00
2"	RN200NO	72.00	N200NO	24.00
3"	RN300NO	124.00	N300NO	57.00
4"	RN400NO	194.00	N400NO	93.00

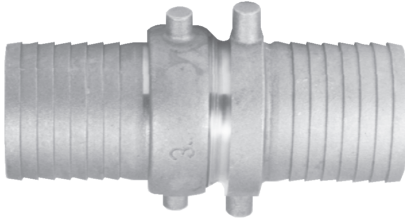
Ferrules

Size	Hose O.D.		<i>304 Stainless Steel</i>	
	From:	To:	Part #	Price/E
1½"	1-60/64"	2-12/64"	GAS2334NO	\$25.20
1½"	2-4/64"	2-22/64"	GAS2370NO	26.50
2"	2-30/64"	2-44/64"	GAS2709NO	20.55
2"	2-42/64"	2-54/64"	GAS2885NO	42.40
3"	3-30/64"	3-46/64"	GAS3760NO	32.90
3"	3-47/64"	3-54/64"	GAS3885NO	46.65
4"	4-40/64"	4-47/64"	GAS5010NO	135.70

Note: Stems are for use with lap joint flanges on page 396.

- * Special pushers required:
- 1½" stem - RN150NOPUSH
 - 2" stem - RN200NOPUSH
 - 3" stem - RN300NOPUSH
 - 4" stem - RN400NOPUSH

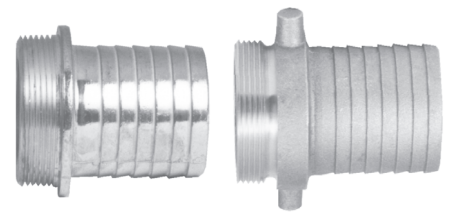
King Short Shank Suction Couplings, NPSM Thread



Complete Coupling



Female



Male

All 3" to 6" males have pin lugs

Size	Aluminum w/Brass Nut		Pkg Qty
	Part #	Price/E	
1½"	CAB150	\$5.80	60
2"	CAB200	8.60	40
2½"	CAB250	15.50	30
3"	CAB300	17.85	18
4"	CAB400	35.35	8
6"	CAB600	74.10	6

Size	Aluminum w/Brass Nut	
	Part #	Price/E
1½"	FAB150	\$4.50
2"	FAB200	6.60
2½"	FAB250	11.05
3"	FAB300	12.90
4"	FAB400	25.75
6"	FAB600	52.00

Size	Aluminum	
	Part #	Price/E
1½"	MA150	\$2.90
2"	MA200	3.70
2½"	MA250	8.15
3"	MA300	9.75
4"	MA400	19.20
6"	MA600	36.75

Size	Brass	
	Part #	Price/E
1¼"	CBB125	\$16.00
1½"	CBB150	17.00
2"	CBB200	24.00
2½"	CBB250	39.00
3"	CBB300	62.50
4"	CBB400	99.50

Size	Brass	
	Part #	Price/E
1¼"	FBB125	\$9.50
1½"	FBB150	10.10
2"	FBB200	13.60
2½"	FBB250	22.00
3"	FBB300	37.00
4"	FBB400	63.00

Size	Brass	
	Part #	Price/E
1¼"	MB125	\$8.50
1½"	MB150	8.25
2"	MB200	11.50
2½"	MB250	21.75
3"	MB300	29.50
4"	MB400	45.40

Size	Plated Malleable Iron	
	Part #	Price/E
1"	S33	\$16.25
1¼"	S48	23.80
1½"	S63	21.75
2"	S78	28.00
2½"	S93	55.80
3"	S111	59.45
4"	S123	99.95
5"	S168	211.75
6"	S183	213.35
8"	S243	353.00

Size	Plated Malleable Iron	
	Part #	Price/E
1"	S12	\$9.75
1¼"	S17	14.05
1½"	S22	11.35
2"	S27	16.10
2½"	S32	34.60
3"	S38	30.25
4"	S42	55.65
5"	S57	131.80
6"	S62	119.90
8"	S82	243.00

Size	Plated Malleable Iron	
	Part #	Price/E
1"	S10	\$6.50
1¼"	S15	9.75
1½"	S20	10.40
2"	S25	11.90
2½"	S30	21.20
3"	S36	29.20
4"	S40	44.30
5"	S55	79.95
6"	S60	93.45
8"	STC80	110.00

Size	Plated Malleable Iron w/ Brass Nut	
	Part #	Price/E
1"	SB33	\$20.35
1¼"	SB48	21.10
1½"	SB63	21.20
2"	SB78	26.50
2½"	SB93	52.00
3"	SB111	57.85
4"	SB123	96.60
5"	SB168	221.70
6"	SB183	201.45
8"	SB243	504.20

Size	Plated Malleable Iron w/ Brass Nut	
	Part #	Price/E
1"	SB12	\$13.85
1¼"	SB17	11.35
1½"	SB22	10.80
2"	SB27	14.60
2½"	SB32	30.80
3"	SB38	28.65
4"	SB42	52.30
5"	SB57	141.75
6"	SB62	108.00
8"	SB82	394.20

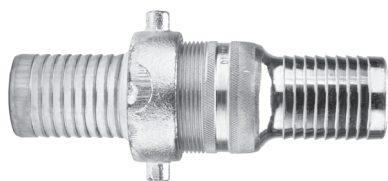
Size	Plated Malleable Iron	
	Part #	Price/E
1"	S10	\$6.50
1¼"	S15	9.75
1½"	S20	10.40
2"	S25	11.90
2½"	S30	21.20
3"	S36	29.20
4"	S40	44.30
5"	S55	79.95
6"	S60	93.45
8"	STC80	110.00

Note: Plated malleable iron
1" fittings have a hex nut
and 1¼" - 8" have pin lugs

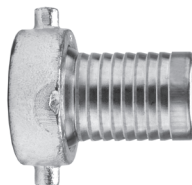
Replacement washers (KRW standard) are available, see page 190.



Suction Hose Fittings



Complete Coupling



Female



Male

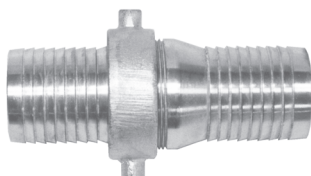
Size	Steel w/ Malleable Iron Nut Part #	Price/E
1 3/4"	CSM175	\$29.70

Size	Steel w/ Malleable Iron Nut Part #	Price/E
1 3/4"	FCSM175	\$14.30

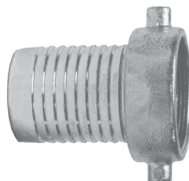
Size	Steel Part #	Price/E
1 3/4"	STC175200	\$15.40

Note: 1 3/4" shanks have 2" pipe threads

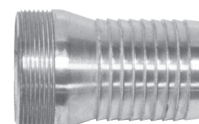
King Steel Short Shank Suction Couplings, NPSM Thread



Complete Coupling



Female



Male

Size	Steel w/ Malleable Iron Nut Part #	Price/E
1 1/4"	CSM125	\$26.65
1 1/2"	CSM150	20.15
2"	CSM200	27.05
2 1/2"	CSM250	39.05
3"	CSM300	46.15
4"	CSM400	73.50
6"	CSM600	158.80

Size	Steel w/ Malleable Iron Nut Part #	Price/E
1 1/4"	FCSM125	\$15.05
1 1/2"	FCSM150	11.60
2"	FCSM200	14.05
2 1/2"	FCSM250	21.10
3"	FCSM300	26.15
4"	FCSM400	44.30
6"	FCSM600	94.00

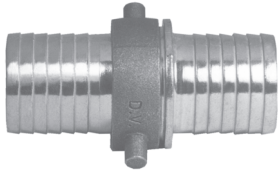
Size	Steel Part #	Price/E
1 1/4"	MCS125	\$11.60
1 1/2"	MCS150	8.55
2"	MCS200	13.00
2 1/2"	MCS250	18.40
3"	MCS300	20.00
4"	MCS400	29.20
6"	MCS600	64.80

Size	Steel w/ Brass Nut Part #	Price/E
1 1/4"	CSB125	\$28.90
1 1/2"	CSB150	20.25
2"	CSB200	26.40
2 1/2"	CSB250	37.85
3"	CSB300	45.00
4"	CSB400	72.40
6"	CSB600	150.15

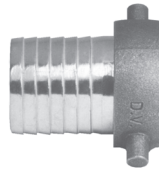
Size	Steel w/ Brass Nut Part #	Price/E
1 1/4"	FCSB125	\$17.30
1 1/2"	FCSB150	11.70
2"	FCSB200	13.40
2 1/2"	FCSB250	19.45
3"	FCSB300	25.00
4"	FCSB400	43.20
6"	FCSB600	85.35

Size	Steel Part #	Price/E
1 1/4"	MCS125	\$11.60
1 1/2"	MCS150	8.55
2"	MCS200	13.00
2 1/2"	MCS250	18.40
3"	MCS300	20.00
4"	MCS400	29.20
6"	MCS600	64.80

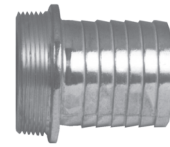
King Short Shank Suction Couplings, NST (NH) Thread



Complete Coupling



Female



Male

Size	Steel w/ Malleable Iron Nut Part #	Price/E
1½"	S63N	\$33.55
2½"	S93N	59.40

Size	Steel w/ Malleable Iron Nut Part #	Price/E
1½"	S22N	\$19.25
2½"	S32N	32.40

Size	Steel Part #	Price/E
1½"	S201	\$14.30
2½"	S301	27.00

Size	Plated Malleable Iron w/BrassNut Part #	Price/E
1½"	SB63N	\$33.20
2½"	SB93N	68.05

Size	Plated Malleable Iron w/BrassNut Part #	Price/E
1½"	SB22N	\$18.90
2½"	SB32N	41.05

Size	Steel Part #	Price/E
1½"	S201	\$14.30
2½"	S301	27.00

Size	Brass Part #	Price/E
1½"	BS63N	\$36.00
2½"	BS93N	76.00

Size	Brass Part #	Price/E
1½"	BS22N	\$15.00
2½"	BS32N	31.00

Size	Brass Part #	Price/E
1½"	BS201	\$25.00
2½"	BS301	50.00

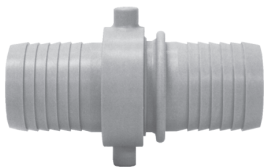
Size	Aluminum w/Brass Nut Part #	Price/E
1½"	CAB150N	\$12.00
2½"	CAB250N	23.90

Size	Aluminum w/Brass Nut Part #	Price/E
1½"	FAB150N	\$8.40
2½"	FAB250N	15.75

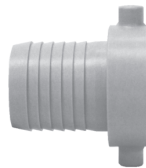
Size	Aluminum Part #	Price/E
1½"	MA150N	\$6.30
2½"	MA250N	12.60

NST (Common Fire Hose Thread) is also known as NH.
Replacement washers (KRW standard) are available, see page 190.

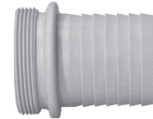
Nylon Short Shank Suction Couplings (NPSM Thread)



Complete Coupling



Female



Male

Size	Reinforced Nylon Part #	Price/E
1¼" *	TCS48	\$13.55
1½"	TCS63~	22.15
2"	TCS78	23.75
3"	TCS111	45.00

Size	Reinforced Nylon Part #	Price/E
1¼" *	TCF17	\$9.25
1½"	TCF22	12.75
2"	TCF27	15.00
3"	TCF38	26.50

Size	Reinforced Nylon Part #	Price/E
1¼" *	TCM15	\$4.30
1½"	TCM20	9.40
2"	TCM25	8.75
3"	TCM36	18.50

* 1¼" fittings have a 1½" NPSM thread

Pin Lug Spanner Wrenches

Single End Wrench



Size	Plated Malleable Iron	
	Part #	Price/E
1½"	SW15	\$6.60
2"	SW20	6.75
2½"	SW25	7.60
3"	SW30	8.90
4"	SW40	8.75
6"	SW60	60.00
8"	SW80~	85.00



Double End Wrench

Size	Plated Malleable Iron	
	Part #	Price/E
1½", 2" x 2½", 3"	SW153	\$15.80

Additional spanner wrenches are also available on pages 350 and 351.

Washers for Suction, Long and Short Shank Couplings

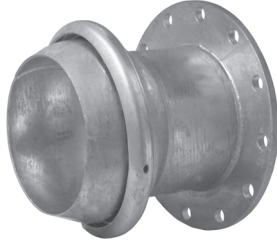


Size	Rubber		Neoprene		Viton®		Leather		NST Washers	
	Part #	Price/E	Part #	Price/E	Part #	Price/E	Part #	Price/E	Part #	Price/E
½"	KRW1	\$.35	---	--	---	--	KLW1~	\$.35	---	--
¾"	KRW5	.35	KNW5	\$.35	---	--	KLW5	.50	---	--
1"	KRW10	.35	KNW10	.35	KVW10	\$3.30	KLW10	.60	---	--
1¼"	KRW15	.35	KNW15	.65	---	--	KLW15	.60	---	--
1½"	KRW20	.40	KNW20	.55	KVW20	6.00	KLW20	.85	KRW2075	\$1.60
2"	KRW25	.55	KNW25	.60	KVW25	7.60	KLW25	.85	---	--
2½"	KRW30	.55	KNW30	.70	---	--	KLW30	1.10	KRW3075	1.60
3"	KRW35	.65	KNW35	1.10	KVW35	16.45	KLW35	1.45	---	--
4"	KRW40	1.20	KNW40	1.60	---	--	KLW40	1.45	---	--
5"	KRW50	2.80	KNW50~	3.50	---	--	---	--	---	--
6"	KRW60	3.80	KNW60	5.40	---	--	---	--	---	--
8"	KRW80	7.80	KNW80~	11.00	---	--	---	--	---	--

Quick Connect Fittings

- The hot dipped, galvanized Agri-Lock quick coupling (Bauer style) has a double pin locking lever for smooth closing action.
- Each coupler is equipped with a safety pin to prevent accidental openings.
- The primary applications for these fittings are irrigation and suction lines.
- These fittings are not recommended for chemicals or any hazardous type materials where the possibility of leakage would result in health or environmental concerns. Consult the factory for recommendations.

Type A



Male with 150 ASA Flange

Size	Galvanized	
	Part #	Price/E
10"	MC22210	\$583.70
12"	MC22212	822.40



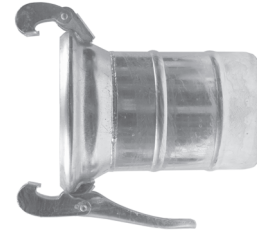
Female with 150 ASA Flange

Size	Galvanized	
	Part #	Price/E
10"	FC22310	\$594.00
12"	FC22312	941.70



Male with Hose Shank

Size	Galvanized	
	Part #	Price/E
10"	MC21110	\$278.50
12"	MC21112	427.40



Female with Hose Shank

Size	Galvanized	
	Part #	Price/E
10"	FC21210	\$270.90
12"	FC21212	485.75



Type A gaskets

Size	Rubber		EPDM	
	Part #	Price/E	Part #	Price/E
10"	RG20510	\$16.15	RG20610	\$37.20
12"	RG20512	18.20	RG20612	42.20



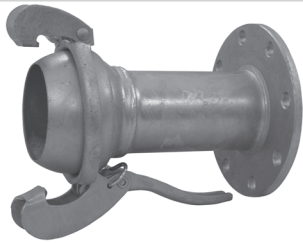
Male x Female 90° Elbow

NEW

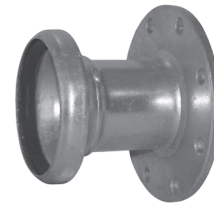
Size	Galvanized	
	Part #	Price/E
10"	EL21510-90	\$570.60
12"	EL21512-90	906.70

Quick Connect Fittings

Type B



Male with 150 ASA Flange



Female with 150 ASA Flange

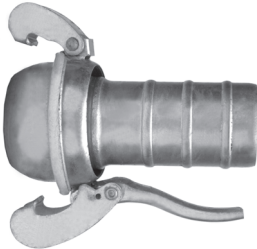
D

NEW

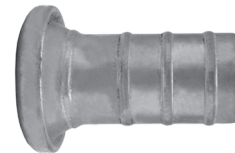
NEW

Size	Galvanized	
	Part #	Price/E
4"	MC3134	\$192.70
6"	MC3136	371.35
8"	MC3138	584.00
12"	MC31312	1080.00

Size	Galvanized	
	Part #	Price/E
4"	FC3144	\$136.75
6"	FC3146	258.85
8"	FC3148	392.85
12"	FC31412	724.00



Male with Hose Shank



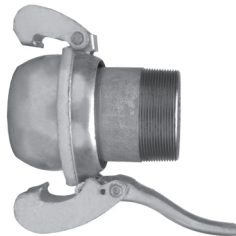
Female with Hose Shank

NEW

NEW

Size	Galvanized	
	Part #	Price/E
2"	MC3092	\$32.05
3"	MC3093	52.10
4"	MC3094	92.45
6"	MC3096	166.20
8"	MC3098	314.20
12"	MC30912	716.50

Size	Galvanized	
	Part #	Price/E
2"	FC3102	\$13.50
3"	FC3103	20.55
4"	FC3104	39.80
6"	FC3106	71.50
8"	FC3108	152.95
12"	FC31012	351.00



Male with Male NPT



Female with Male NPT

Size	Galvanized	
	Part #	Price/E
2"	MCM3112	\$40.40
3"	MCM3113	62.65
4"	MCM3114	118.85
6"	MCM3116	212.50
8"	MCM3118	388.75

Size	Galvanized	
	Part #	Price/E
2"	FCM3122	\$20.80
3"	FCM3123	29.45
4"	FCM3124	67.00
6"	FCM3126	117.00
8"	FCM3128	214.40

Type B gaskets

Size	Rubber		EPDM	
	Part #	Price/E	Part #	Price/E
2"	RG3052	\$1.00	RG3062	\$3.25
3"	RG3053	2.00	RG3063	4.10
4"	RG3054	3.45	RG3064	6.45
6"	RG3056	6.85	RG3066	13.45
8"	RG3058	15.60	RG3068	24.70
12"	RG30512	32.55	RG30612	46.00

Quick Connect Fittings

Type B



Male x Female 90° Elbow

NEW

Size	Galvanized	
	Part #	Price/E
4"	EL3154-90	\$143.80
6"	EL3156-90	273.60
8"	EL3158-90	493.20
12"	EL31512-90	1055.00



Male x Female 45° Elbow

NEW

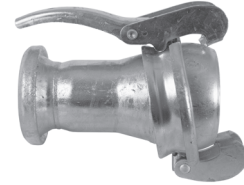
Size	Galvanized	
	Part #	Price/E
4"	EL3154-45	\$133.30
6"	EL3156-45	246.35
8"	EL3158-45	432.00
12"	EL31512-45	920.35



Female x Male Reducer

NEW

Female Size	Male Size	Galvanized	
		Part #	Price/E
6"	4"	FMR31864	\$169.85
8"	6"	FMR31886	302.25



Female x Male Increaser

NEW

Female Size	Male Size	Galvanized	
		Part #	Price/E
4"	6"	FMI31946	\$210.05
6"	8"	FMI31968	373.45



Female with Gasket

NEW

Size	Unplated	
	Part #	Price/E
2"	3022	\$4.95
3"	3023	6.85
4"	3024	14.40
6"	3026	29.65
8"	3028	60.15
12"	30212	142.05



Male

NEW

Size	Unplated	
	Part #	Price/E
2"	3032	\$3.35
3"	3033	4.65
4"	3034	11.70
6"	3036	17.60
8"	3038	38.10
12"	30312	94.75



Safety Pins

NEW

Size	Galvanized		Pkg Qty
	Part #	Price/E	
2"	SP59	\$3.00	25
3"	SP89	4.35	25
4"	SP89	4.35	25
6"	SP159	4.35	25
8"	SP159	4.35	25
12"	SP390	5.05	10

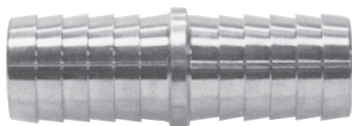


Lever Ring

NEW

Size	Galvanized	
	Part #	Price/E
2"	LR3042	\$18.65
3"	LR3043	31.35
4"	LR3044	51.50
6"	LR3046	100.90
8"	LR3048	173.85
12"	LR30412	395.65

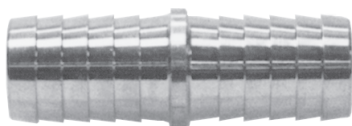
Dixon 316 Stainless Steel Menders



Size	Length	Stainless Steel	
		Part #	Price/E
1/4"	2-1/32"	RM2	\$10.50
3/8"	2-1/16"	RM3	11.00
1/2"	2-1/16"	RM4	15.05
3/4"	2-1/2"	RM6	20.00

D

Dixon Brass Hose Menders



Size	Brass	
	Part #	Price/E
1/8"	BM1	\$1.30
3/16"	BM15	1.20
1/4"	BM2	1.10
5/16"	BM25	1.35
3/8"	BM3	1.40
1/2"	BM4	1.95
5/8"	BM5	2.70
3/4"	BM6	3.10
1"	BM8	5.10

Tuff-Lite Glass-Reinforced Nylon Menders

- Maximum working temperature 150°F



Size	Nylon	
	Part #	Price/E
1-1/4"	TM16	\$4.25
1-1/2"	TM21	7.00
2"	TM26	9.00
3"	TM36	24.00
4"	TM46	47.00
6"	TM66	73.00

Tuff-Lite Nylon Menders



Size	Nylon		Pkg Qty
	Part #	Price/E	
1/4"	TM2	\$0.515	50
5/16"	TM25	0.555	50
3/8"	TM3	0.595	50
1/2"	TM4	0.785	50
5/8"	TM5	1.22	50
3/4"	TM6	1.22	50
1"	TM8	1.49	25

Tuff-Lite Nylon Push-On Menders

- No clamps needed when used with push-on hose.



Size	Nylon		Pkg Qty
	Part #	Price/E	
1/4"	TPM2	\$0.520	50
3/8"	TPM3	0.575	50
1/2"	TPM4	0.690	50

Dixon Steel Hose Menders

- They are not for compressible products such as air, nitrogen or steam.
- The working pressure may vary with the construction of the hose, the type of clamping system used and the application. Consult the factory for recommendations.
- In accordance with the R.M.A. bulletin for oil suction and discharge hose, a coupled length of hose in any size, should be tested to 1½ times the working pressure and held for fifteen minutes without leaking or coupling movement. For additional information and detailed instruction on testing procedures, see the Rubber Manufacturers Association's (R.M.A.) handbook.



Size	Stainless Steel		Pkg Qty
	Part #	Price/E	
1/4"	RDMA	\$17.75	100
3/8"	RDMB	20.00	100
1/2"	RDM1	18.00	50
3/4"	RDM6	36.75	50
1"	RDM11	39.00	50
1-1/4"	RDM16	41.00	5
1-1/2"	RDM21	47.25	50
2"	RDM26	52.50	10
3"	RDM36	118.00	5
4"	RDM46	140.00	5

Size	Zinc Plated Steel		Pkg Qty
	Part #	Price/E	
1/4"	DMA	\$4.40	200
3/8"	DMB	4.45	100
1/2"	DM1	2.90	50
5/8"	DM5	4.50	50
3/4"	DM6	3.25	50
1"	DM11	3.30	50
1-1/4"	DM16	5.05	50
1-3/8"	DM18	17.00	50
1-1/2"	DM21	4.95	50
1-1/2"	DMXL21*	15.90	25
2"	DM26	6.55	50
2"	DMXL26*	19.00	25
2-1/2"	DM31	11.20	25
3"	DM36	13.30	20
4"	DM46	22.40	10
5"	DM51	77.40	5
6"	DM66	47.00	4
8"	DM86	126.00	1
10"	DM100	215.00	1
12"	DM120	340.00	1

* XL series is extra long

D

King Steel Hose Menders

- They are not for compressible products such as air, nitrogen or steam.
- The working pressure may vary with the construction of the hose, the type of clamping system used and the application. Consult the factory for recommendations.
- In accordance with the R.M.A. bulletin for oil suction and discharge hose, a coupled length of hose in any size, should be tested to 1½ times the working pressure and held for fifteen minutes without leaking or coupling movement. For additional information and detailed instruction on testing procedures, see the Rubber Manufacturers Association's (R.M.A.) handbook.



For 1 Clamp Each End



For 2 Clamps Each End

Size	Steel	
	Part #	Price/E
1/4"	KM21	\$6.75
5/16"	KM251	5.00
1/2"	KM41	5.80
5/8"	KM51	7.50
3/4"	KM61	4.60
1"	KM81	5.10
1-1/4"	KM101	5.45
1-1/2"	KM121	8.50
2"	---	--

Size	Steel	
	Part #	Price/E
1/4"	---	--
5/16"	---	--
1/2"	KM42	\$7.45
5/8"	KM52	8.00
3/4"	KM62	7.00
1"	KM82	7.95
1-1/4"	KM102	8.75
1-1/2"	KM122	12.90
2"	KM162	18.00

Spring Loaded Check Valves with Strainer

- Brass with NBR seat, stainless steel strainer
- Soft seat for bubble tight shutoff, spring loaded for fast seating action.
- Flow profile designed to minimize head loss.
- Temperature range: 10°F to 210°F (-10°C to 100°C)
- Pressure rating: 1-1/2" - 2" 400 WOG; 3" - 4" 200 WOG
- Cracking pressure: 0.29 PSI

Size	Part #	Price/E
1½"	BVFS20	\$46.50
2"	BVFS25	67.10
3"	BVFS35	203.00
4"	BVFS40	316.00



Cast Iron Threaded Foot Valves



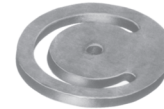
Complete Threaded Assembly (painted)



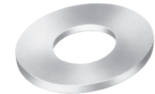
Strainer Only (painted)



Flapper Valve Assembly



Valve Leather



Seat Plate

NPT Size	Part #	Price/E	Part #	Price/E	Part #	Price/E	Part #	Price/E	Part #	Price/E
1½"	DFVS20	\$22.00	FVS20~	\$6.50	FVFA20	\$13.25	FVL20	\$6.25	FVSP20	\$5.95
2"	DFVS25	34.25	FVS25	10.00	FVFA25	16.75	FVL25	10.00	FVSP25	5.00
2½"	DFVS30	47.00	FVS30~	19.75	FVFA30	21.00	FVL30	12.25	FVSP30~	9.00
3"	DFVS35	58.50	FVS35	20.00	FVFA35	22.45	FVL35	18.50	FVSP35	13.50
4"	DFVS40	97.25	FVS40	27.15	FVFA40	33.00	FVL40	29.00	FVSP40	15.00
6"	DFVS60	240.00	FVS60	65.00	FVFA60	81.00	FVL60	62.00	FVSP60	27.40
8"	DFVS80	500.00	FVS80~	178.60	FVFA80	177.15	FVL80 *	117.00	FVSP80	62.00

* FVL80 is rubber.

Cast Iron Flanged Foot Valves



NPT Size	Part #	Price/E
6"	DFVS060	\$3200.00
8"	DFVS080	4900.00
10"	DFVS100	6700.00
12"	DFVS120	8200.00

Note: Replacement parts are available, please contact the factory for further information.

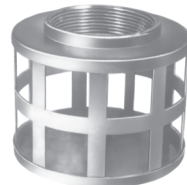
Strainers and Skimmers



Standard Threaded Round Hole Type *



304 Stain. Steel Round Hole Type



Standard Threaded Square Hole Type *



Long Thin Round Hole Type *



Skimmer Bottom Round Hole Type *



Skimmer Top Round Hole Type *

Size	Part #	Price/E	Part #	Price/E	Part #	Price/E	Part #	Price/E	Part #	Price/E	Part #	Price/E
1½"	RHS20	\$14.50	RRHS20	\$210.00	SHS20~	\$14.50	RSS20	\$14.50	DSB20	\$47.50	DST20	\$47.50
2"	RHS25	17.00	RRHS25	275.00	SHS25	17.00	RSS25	17.00	DSB25	53.00	DST25	53.00
2½"	RHS30	21.50	--	--	SHS30	21.50	RSS30	21.50	--	--	--	--
3"	RHS35	27.00	RRHS35	390.00	SHS35	27.00	RSS35	27.00	DSB35	118.00	DST35	118.00
4"	RHS40	37.75	RRHS40	485.00	SHS40	37.75	RSS40	37.75	--	--	--	--
5"	RHS50	75.00	--	--	--	--	--	--	--	--	--	--
6"	RHS60	109.00	RRHS60	850.00	SHS60	109.00	--	--	--	--	--	--
8"	RHS80	250.00	--	--	--	--	--	--	--	--	--	--
10"	RHS100	460.00	--	--	--	--	--	--	--	--	--	--
12"	RHS120	835.00	--	--	--	--	--	--	--	--	--	--

* Zinc plated steel

Polyethylene Strainers

NPT Size	Black Polyethylene	
	Part #	Price/E
1½"	TSS20	\$8.00
2"	TSS25	8.00
3"	TSS35	17.50



D

King Steel Nipples



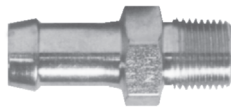
For one clamp

Hose Size	NPT Size	Unplated Steel		Pkg Qty
		Part #	Price/E	
5/8"	1/2"	KRN541	\$7.85	100
3/4"	1/2"	KRN641	5.00	50
3/4"	3/4"	KRN661	8.40	50
1"	3/4"	KRN861	7.40	50



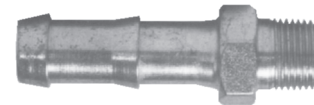
For two clamps

Hose Size	NPT Size	Unplated Steel		Pkg Qty
		Part #	Price/E	
1/2"	1/4"	KRN422	\$10.45	100
1/2"	3/8"	KRN432	7.25	100
5/8"	1/2"	KRN542	9.55	100
3/4"	1/2"	KRN642	8.25	50
3/4"	3/4"	KRN662	9.30	50
1"	3/4"	KRN862	8.25	50
1"	1"	KRN882	9.25	50
1-1/4"	1"	KRN1082	7.80	25
1-1/2"	1-1/4"	KRN1210	10.90	25
2"	1-1/2"	KRN1612	30.35	20



For one clamp

Hose Size	NPT Size	Plated Steel		Pkg Qty
		Part #	Price/E	
1/4"	1/4"	KHN221	\$6.00	100
3/8"	1/4"	KHN321	4.70	100
3/8"	3/8"	KHN331	5.35	100
3/8"	1/2"	KHN341	5.35	100
1/2"	1/4"	KHN421	6.00	50
1/2"	3/8"	KHN431	5.75	50
1/2"	1/2"	KHN441	5.25	50
1/2"	3/4"	KHN461	7.35	50
3/4"	1/2"	KHN641	7.60	50
3/4"	3/4"	KHN661	7.10	50
1"	3/4"	KHN861	9.85	50
1"	1"	KHN881	9.70	25

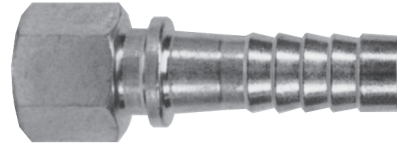
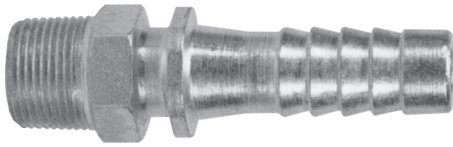


For two clamps

Hose Size	NPT Size	Plated Steel		Pkg Qty
		Part #	Price/E	
1/4"	1/4"	KHN222	\$8.20	100
3/8"	1/4"	KHN322	8.45	100
3/8"	3/8"	KHN332	8.90	100
3/8"	1/2"	KHN342	10.50	100
1/2"	1/4"	KHN422	9.50	100
1/2"	3/8"	KHN432	7.90	100
1/2"	1/2"	KHN442	7.25	50
1/2"	3/4"	KHN462	10.40	50
3/4"	1/2"	KHN642	8.00	50
3/4"	3/4"	KHN662	8.10	50
1"	3/4"	KHN862	12.00	50
1"	1"	KHN882	11.80	25

Optional Pkg./Box Quantity Shown

3500 Steel Nipples



Male Nipple
(Hose Shank x Male NPT)

Female Nipple
(Hose Shank x Female NPT)

Hose Size	NPT Size	Zinc Plated Steel		Pkg Qty
		Part #	Price/E	
1/4"	1/8"	3501	\$4.00	100
1/4"	1/4"	3502	3.15	100
1/4"	3/8"	3504	4.30	100
3/8"	1/4"	3505	3.60	100
3/8"	3/8"	3506	3.60	100
3/8"	1/2"	3508	5.20	100
1/2"	1/4"	3509	4.05	100
1/2"	3/8"	3510	4.20	100
1/2"	1/2"	3512	4.45	100
1/2"	3/4"	3511	6.95	50
3/4"	1/2"	3513	7.60	50
3/4"	3/4"	3514	7.00	50
3/4"	1"	3515	13.10	25
1"	3/4"	3516	12.50	25
1"	1"	3518	10.30	25

Hose Size	NPT Size	Zinc Plated Steel		Pkg Qty
		Part #	Price/E	
1/4"	1/4"	3542	\$5.80	100
3/8"	1/4"	3545	6.00	50
3/8"	3/8"	3546	6.20	50
1/2"	3/8"	3550	6.40	100
1/2"	1/2"	3552	6.95	50
3/4"	3/4"	3554	11.10	50

Optional Pkg./Box Quantity Shown

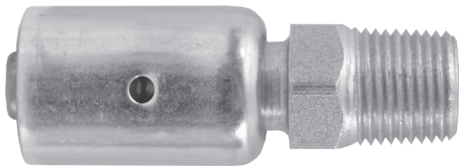
NEW

3500 Steel Nipples with Ferrules

Exclusive interlocking ferrule can be crimped or swaged to achieve maximum coupling sealing and retention. The 3500 steel nipples with ferrules have a low profile, streamline appearance. For crimp dimensions see page 466.

- Zinc plated steel 3500 nipples with carbon steel ferrules can be crimped or swaged-on.
- Rated to **600 PSI** working pressure.
- For air and water service only.

SAFETY
ALERT



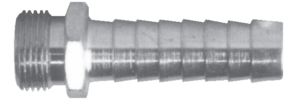
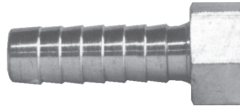
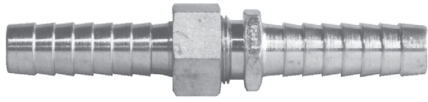
Size	Hose O.D.		Steel	
	From:	To:	Part #	Price/E
1/2"	54/64"	58/64"	3512WF	\$17.50
3/4"	1-10/64"	1-14/64"	3514WF	18.80
1"	1-30/64"	1-34/64"	3518WF	21.00

The Importance of Whip Hose

SAFETY
ALERT

The constant vibration created by air tools, like air drills and pavement breakers, is destructive to air hose couplings, especially the quick-acting type. To provide protection against coupling breakage and related hazards, Dixon recommends the use of a whip hose. To construct a whip hose, connect one end of a short (3' to 10') air hose to the air tool using a 3500 type steel nipple. Connect the other end of the hose to the air supply using the standard quick-acting coupling. The heat-treated 3500 nipple will withstand vibration far better than the standard coupling and provide a safer connection. The whip hose should remain permanently connected to the tool.

Plated Steel and Malleable Iron Long Shank Couplings



Plated Steel with NPSM Thread

Hose ID	NPSM	Part #	Price/E
1/2"	1/2"	SLS404	\$15.35
3/4"	3/4"	SLS606	16.85
1"	1"	SLS808	23.60

Hose ID	NPSM	Part #	Price/E
1/2"	1/2"	SLS444	\$8.10
3/4"	3/4"	SLS646	8.75
1"	1"	SLS848	12.85

Hose ID	NPSM	Part #	Price/E
1/2"	1/2"	SLS414	\$7.25
3/4"	3/4"	SLS616	8.10
1"	1"	SLS818	10.75

Plated Steel with GHT Thread

Hose ID	GHT	Part #	Price/E
3/8"	3/4"	SLS307	\$19.20
1/2"	3/4"	SLS407	17.05
5/8"	3/4"	SLS507	15.05
3/4"	3/4"	SLS607	15.15

Hose ID	GHT	Part #	Price/E
3/8"	3/4"	SLS347	\$9.60
1/2"	3/4"	SLS447	10.20
5/8"	3/4"	SLS547	7.85
3/4"	3/4"	SLS647	7.90

Hose ID	GHT	Part #	Price/E
3/8"	3/4"	SLS317	\$9.60
1/2"	3/4"	SLS417	6.85
5/8"	3/4"	SLS517	7.20
3/4"	3/4"	SLS617	7.25

Plated Malleable Iron with NPSM Thread

Hose ID	NPSM	Part #	Price/E
1-1/4"	1-1/4"	MLS48	\$34.95
1-1/2"	1-1/2"	MLS63	36.50
2"	2"	MLS78	51.40

Hose ID	NPSM	Part #	Price/E
1-1/4"	1-1/4"	MLS33	\$18.50
1-1/2"	1-1/2"	MLS43	18.50
2"	2"	MLS53	30.00

Hose ID	NPSM	Part #	Price/E
1-1/4"	1-1/4"	MLS15	\$16.45
1-1/2"	1-1/2"	MLS20	18.00
2"	2"	MLS25	21.40

MLS and SLS couplings take KRW washers, located on page 190.

Super King Long Shank Couplings for Bulk Handling

Female Coupling (NPSM Thread)

Size	Shank Length	KLW washers standard				Teflon® gaskets Standard			
		Plated Steel Shank w/Brass Nut		Plated Steel Shank w/Malleable Iron Nut		316 Stainless Shank w/Malleable Iron Nut		316 Stainless Shank w/Stainless Nut	
		Part #	Price/E	Part #	Price/E	Part #	Price/E	Part #	Price/E
1-1/4"	4-1/8"	SD15	\$30.00	SDMP15	\$30.00	---	--	---	--
1-1/2"	4-1/8"	SD20	29.00	SDMP20	29.00	---	--	RSHR20 *	\$95.00
2"	5"	SD25	37.00	SDMP25	37.00	RSMD25	\$83.50	RSDR25	114.00
2-1/2"	5"	SD30	55.65	SDMP30	55.65	---	--	---	--
3"	5"	SD35	52.40	SDMP35	52.40	RSMD35	95.25	RSDR35	144.00
4"	5"	SD40	82.40	SDMP40	82.40	---	--	---	--

*RSHR20 has a hex nut.



Male Coupling (NPT Thread)

Size	Shank Length	Plated Steel		316 Stainless	
		Part #	Price/E	Part #	Price/E
1-1/4"	4-3/8"	SK16	\$11.60	---	--
1-1/2"	4-5/32"	SK21	13.50	---	--
2"	5-5/16"	SK26	16.50	RSK26	\$54.50
2-1/2"	5-5/16"	SK31	28.90	---	--
3"	5-1/2"	SK36	30.50	RSK36	99.50
4"	5-1/2"	SK46	43.85	---	--

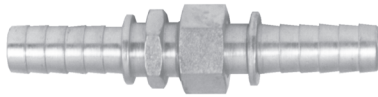


All above couplings will accept 3 band clamps.
Replacement Viton® (KVW) gaskets are also available, see page 190.

See page 424 for Teflon® gaskets

Spray Hose Couplings

Complete Coupling



Female Coupling



Male Coupling



Leather Washer



Plated Steel with NPSM Thread

Hose ID	NPSM Thread	Part #	Price/E	Hose ID	NPSM Thread	Part #	Price/E	Hose ID	NPSM Thread	Part #	Price/E	Part #	Price/E
3/8"	3/4"	SS306	\$19.05	3/8"	3/4"	SS346	\$9.15	3/8"	3/4"	SS316	\$9.90	KLW5	\$0.50
1/2"	1/2"	SS404	25.30	1/2"	1/2"	SS444	15.95	1/2"	1/2"	SS414	9.35	KLW1	0.35
1/2"	3/4"	SS406	19.25	1/2"	3/4"	SS446	8.25	1/2"	3/4"	SS416	11.00	KLW5	0.50
3/4"	3/4"	SS606	23.55	3/4"	3/4"	SS646	14.30	3/4"	3/4"	SS616	9.25	KLW5	0.50
1"	1"	SS808	47.55	1"	1"	SS848	33.00	1"	1"	SS818	14.55	KLW10	0.60

Plated Steel with GHT Thread

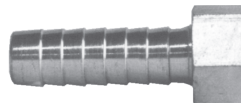
Hose ID	GHT Thread	Part #	Price/E	Hose ID	GHT Thread	Part #	Price/E	Hose ID	GHT Thread	Part #	Price/E	Part #	Price/E
3/8"	3/4"	SS307	\$15.65	3/8"	3/4"	SS347	\$8.70	3/8"	3/4"	SS317	\$6.95	KLW5	\$0.50
1/2"	3/4"	SS407	14.75	1/2"	3/4"	SS447	7.30	1/2"	3/4"	SS417	7.45	KLW5	0.50
5/8"	3/4"	SS507	17.20	5/8"	3/4"	SS547	8.80	5/8"	3/4"	SS517	8.40	KLW5	0.50
3/4"	3/4"	SS607	21.85	3/4"	3/4"	SS647	14.30	3/4"	3/4"	SS617	7.55	KLW5	0.50

Brass Long Shank Fittings

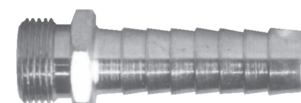
Complete Coupling



Female with Swivel Nut



Male



Brass with NPSM Thread

Hose ID	NPSM Thread	Part #	Price/E	Hose ID	NPSM Thread	Part #	Price/E	Hose ID	NPSM Thread	Part #	Price/E
1/2"	1/2"	BLS404	\$10.70	1/2"	1/2"	BLS444	\$6.20	1/2"	1/2"	BLS414	\$4.50
1/2"	3/4"	BLS406	12.60	1/2"	3/4"	BLS446	7.00	1/2"	3/4"	BLS416	5.60
5/8"	3/4"	BLS506	11.95	5/8"	3/4"	BLS546	6.70	5/8"	3/4"	BLS516	5.25
3/4"	3/4"	BLS606	12.25	3/4"	3/4"	BLS646	6.50	3/4"	3/4"	BLS616	5.75
1"	1"	BLS808	18.85	1"	1"	BLS848	9.75	1"	1"	BLS818	9.10
1-1/4"	1-1/4"	BLS48	42.45	1-1/4"	1-1/4"	BLS33	24.20	1-1/4"	1-1/4"	BLS15	18.25
1-1/2"	1-1/2"	BLS63	52.00	1-1/2"	1-1/2"	BLS43	29.40	1-1/2"	1-1/2"	BLS20	22.60
2"	2"	BLS78	85.40	2"	2"	BLS53	49.00	2"	2"	BLS25	36.40

Sizes 3/8" to 1" machined
1-1/4" to 2" cast

Brass with GHT Thread

Hose ID	GHT Thread	Part #	Price/E	Pkg Qty	Hose ID	GHT Thread	Part #	Price/E	Pkg Qty
1/2"	3/4"	BLS407	\$9.80	150	1/2"	3/4"	BLS417	\$4.40	150
5/8"	3/4"	BLS507	10.35	150	5/8"	3/4"	BLS517	4.60	150
3/4"	3/4"	BLS607	9.60	150	3/4"	3/4"	BLS617	4.60	150

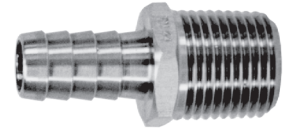
Brass with NST Thread

Hose ID	NST Thread	Part #	Price/E	Hose ID	NST Thread	Part #	Price/E	Hose ID	NST Thread	Part #	Price/E
1-1/2"	1-1/2"	BLS63NST	\$67.00	1-1/2"	1-1/2"	BLS150NST	\$37.80	1-1/2"	1-1/2"	BLS20NST	\$29.20
2-1/2"	2-1/2"	BLS93NST	135.65	2-1/2"	2-1/2"	BLS250NST	69.50	2-1/2"	2-1/2"	BLS30NST	66.15

KRW Washers standard, located on page 190

316 Stainless Steel Inserts

Hose Size	NPT Size	Part #	Price/E	Hose Size	NPT Size	Part #	Price/E
1/8"	1/8"	RN11	\$11.95	1/2"	1/4"	RN42	\$13.20
3/16"	1/8"	RN151	13.80	1/2"	3/8"	RN43	18.85
3/16"	1/4"	RN152	13.80	1/2"	1/2"	RN44	24.70
1/4"	1/8"	RN21	11.20	1/2"	3/4"	RN46	35.50
1/4"	1/4"	RN22	9.90	5/8"	3/8"	RN53	29.35
1/4"	3/8"	RN23	18.65	5/8"	1/2"	RN54	29.35
5/16"	1/8"	RN251	12.35	5/8"	3/4"	RN56	30.90
5/16"	1/4"	RN252	14.40	3/4"	1/2"	RN64	35.00
5/16"	3/8"	RN253	12.35	3/4"	3/4"	RN66	47.40
3/8"	1/8"	RN31	10.30	1"	3/4"	RN86	51.50
3/8"	1/4"	RN32	10.05	1"	1"	RKHN881 *	57.75
3/8"	3/8"	RN33	12.35				
3/8"	1/2"	RN34	25.25				



- Brass inserts are available on page 220.
- Stainless steel ferrules are available on page 226.

* Same shank style as KHN881 shown on page 197.

D

Dixon 316 Stainless Steel Hose Menders

Size	Length	Part #	Price/E	Size	Length	Part #	Price/E
1/4"	2-1/32"	RM2	\$10.50	1/2"	2-1/16"	RM4	\$15.05
3/8"	2-1/16"	RM3	11.00	3/4"	2-1/2"	RM6	20.00

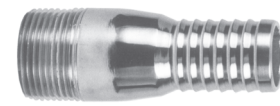
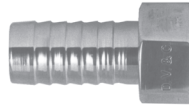
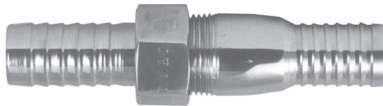


316 Stainless Short Shank Couplings

Complete Coupling

Female with Nut

Male



NPSM Thread

NPT Thread

Size	Part #	Price/E
1/2"	RES404	\$69.25
3/4"	RES606	43.90
1"	RES808	45.70
1-1/4"	RES48	119.80
1-1/2"	RES63	92.85
2"	RES78	122.25

Size	Part #	Price/E
1/2"	RES444	\$55.00
3/4"	RES646	31.40
1"	RES848	31.40
1-1/4"	RES33	103.00
1-1/2"	RES43	73.85
2"	RES53	95.00

Size	Part #	Price/E	Pkg Qty
1/2"	RST1	\$14.25	50
3/4"	RST5	12.50	50
1"	RST10	14.30	50
1-1/4"	RST15	16.80	50
1-1/2"	RST20	19.00	50
2"	RST25	27.25	25

Standard gasket is rubber (KRW), for Viton® gaskets (KVV), see page 190

Optional Pkg./Box Quantity Shown

316 Stainless Steel Pipe Nipples

Close Nipples

Schedule 40 Welded Pipe
Male NPT x Male NPT

NPT Size	Overall Length	Part #	Price/E	Pkg Qty
1/8"	3/4"	CN012SS	\$2.25	--
1/4"	7/8"	CN025SS	2.50	--
3/8"	1"	CN037SS	3.10	--
1/2"	1-1/8"	CN050SS	4.10	--
3/4"	1-3/8"	CN075SS	5.40	10
1"	1-1/2"	CN100SS	7.45	10
1-1/2"	1-3/4"	CN150SS	12.55	10
2"	2"	CN200SS	19.50	--
3"	2-5/8"	CN300SS	52.40	--
4"	2-7/8"	CN400SS~	70.80	--



TBE Nipples

Schedule 40 Welded Pipe
Male NPT x Male NPT

NPT Size	Overall Length	Part #	Price/E
1/2"	6"	TN050X6SS	\$16.00
3/4"	6"	TN075X6SS	18.00
1"	6"	TN100X6SS	24.25
1-1/2"	6"	TN150X6SS	36.00
2"	6"	TN200X6SS	48.00
3"	6"	TN300X6SS	98.00
4"	6"	TN400X6SS~	131.00



Reference page 215 for brass nipples.
Reference page 410 for carbon steel and stainless steel nipples.

Optional Pkg./Box Quantity Shown

Reference page 215 for brass nipples.
Reference pages 165 and 410 for carbon steel nipples.

Do not use pipe nipples as hose inserts.

SAFETY
ALERT