

Tight Fill Couplers and Drop Elbows

3" Complete Units

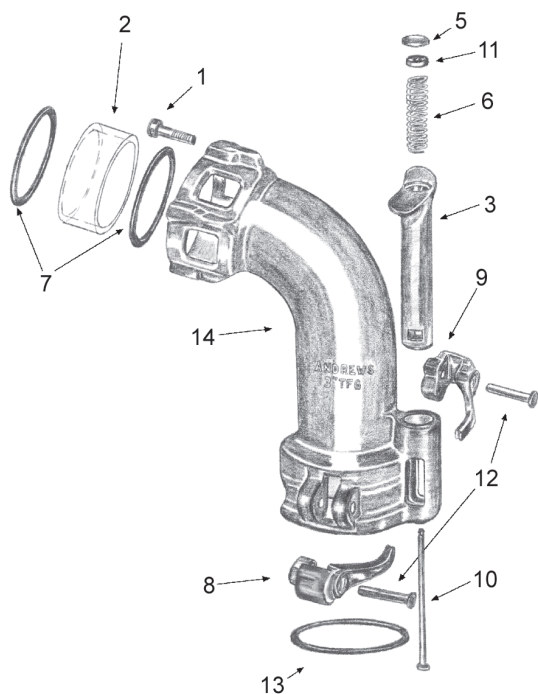
Coupler Type	End Configuration	Part #	Price/E
3" tight fill	3" male adapter	300300MAE	\$417.30
3" tight fill	4" male adapter	3004030MAE	442.80
3" tight fill	3" female coupler	300300FCE~	468.75

3" Tight Fill Coupler



Size	Part #	Price / Each
3"	300-TFG	\$372.60

Parts for 3" Tight Fill Couplers



Item	Description	Part #	Price/E
1	Screw-inlet end	P3-TFG-1	\$.75
2	Plexiglass-shell only	P3-TFG-2	20.00
3	Plunger	P3-TFG-3	44.55
4	Full grip plunger	P3-TFG-4~	113.40
5	Plunger cap	P3-TFG-5	2.55
6	Spring	P3-TFG-6	4.90
7	Plexiglass gasket	P3-TFG-7	2.20
8	Right cam arm	P3-TFG-8	29.35
9	Left cam arm	P3-TFG-9	29.35
10	Rod	P3-TFG-10	4.90
11	Disc	P3-TFG-11	6.40
12	Pin	300-P	.95
13	Coupler gasket	300-G-BU	.85
14	Body	P3-TFG-13	---

3" Tight Fill Coupler Inlet Ends



Male Adapter



Female Coupler

Size	Description	Part #	Price/E
3"	3" male adapter	300-MAE	\$44.70
4"	4" male adapter	4030-MAE	70.20
3"	3" female coupler	300-FCE~	98.85

Tight Fill Couplers and Drop Elbows

4" Complete Units

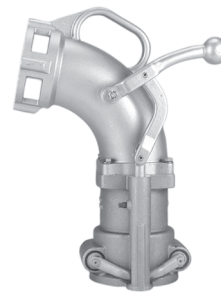
Coupler type	End Configuration	Part #	Price/E
4" drop elbow	4" male adapter	6000A	\$622.90
4" drop elbow	4" male adapter, side lever action	6200A	766.50

4" Drop Elbows

Size	Part #	Price / Each
4"	6000	\$579.45
4"	6200	682.60



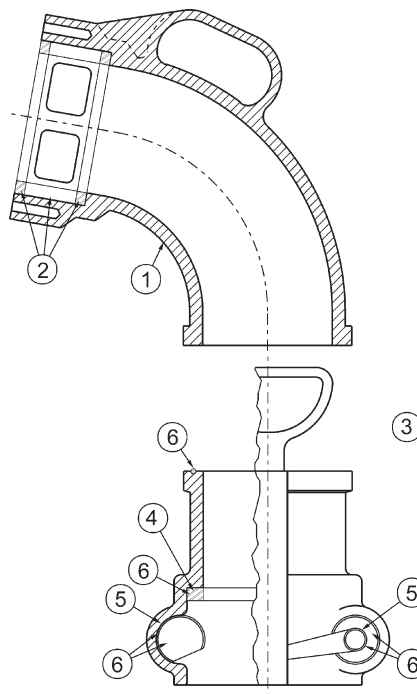
6000



6200

Parts for 4" Drop Elbow

Item	Description	Part #	Price/E
1	elbow (<i>only</i>)	6200-1	\$134.80
2	sight glass repair kit	6200SGK	37.65
3	bottom end assembly	6030	393.05
4	buna-N gasket	6000-9	6.00
5	bushing repair kit	6200BK	32.10
6	arm and seal repair kit	6200ARK	106.45



4" Drop Elbow Inlet Ends

Size	Description	Part #	Price/E
3"	male adapter	6000-16	\$72.80
4"	male adapter	6000-17	72.80
3"	female coupler	6000-15	133.60
4"	female coupler	6000-14	133.60



Male Adapter



Female Coupler

Vapor Elbow

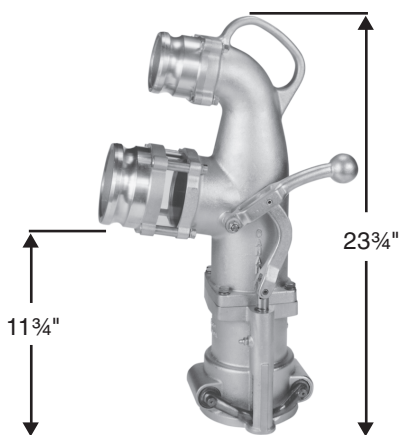


- For use in two point vapor recovery system
- One piece bronze locking arms housed in polymer bushings
- Advanced design side lever locking system
- Viton® main seal with Buna poppet seal and stainless steel hardware
- Bolt on 3" male outlet included (can rotate for extended life)
- Lubrication fitting on locking stem

Note: see drop elbow below for single point vapor recovery co-axial elbow 6400.

Description	Part #	Price/Ea
without inlet probe and poppet	VR6200NP	\$535.75

Co-axial Elbow



- For single point vapor recovery only
- 3" male vapor outlet (top)
- Comes assembled with 4" male inlet
- Note: Inlets made special for co-axials only.
- Quality cast aluminum construction with solid bronze arms
- Bolt-on inlets/outlets for easy, fast replacement
- Acrylic sight glass with Buna seals

Description	Part #	Price/Ea
4" male inlet	6400	\$996.35

Side Seal Drop Elbow



- For use with special 4" side seal style fill collars only
- Modular, easy to repair, bolt together aluminum construction
- Comes with acrylic sight glass with Buna seals (2), bronze locking levers and Buna main seal
- 4" male and lock ring installed

Description	Part #	Price/Ea
4" male inlet	6000ASAL	\$606.00

Side Seal Adapter



- Allows conventional elbows to be used with special side seal style fill collars
- Bottom connects to side seal fill collar
- Top section with standard 4" top seal collar profile to accept clamping of standard 4" drop elbows

Description	Part #	Price/Ea
4" male inlet	6000-SSA	\$275.20

Fill Pipe Adapters

TFA series

- For use with 300-TFG

Adapter Size	Female Thread	Material	Part #	Price/Ea	Pkg Qty
3"	3" NPT	aluminum hardcoat	300-TFA	\$43.75	10



- For use with 6200 and 6000
- NPSM thread is supplied with gasket

Fill Adapters

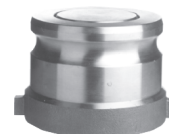
Adapter Size	Female Thread	Height	Material	Part #	Price/Ea	Pkg Qty
4"	4" NPSM	2-3/8"	bronze	BZ4051S	\$75.40	5
4"	4" NPT	3-1/2"	bronze	BZ4051	75.40	5
4"	4" NPT	3-1/2"	ZN-AL alloy	BY4051	76.00	5



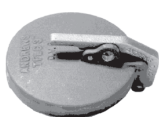
- Poppeted vapor collar at station vapor outlet
- Can also be used as vapor valve on tanker but does not have air interlock mount
- For use with VR6200NP
- Low profile design

Vapor Recovery

Adapter Size	Female Thread	Height	Material	Part #	Price/Ea	Pkg Qty
4"	4" NPT	3-5/8"	bronze	VR4086	\$208.65	5
4"	4" NPT	3-5/8"	ZN-AL alloy	VR4086-BY	180.00	5



Fill Pipe Adapter Caps



Single Handle



Single Action Locking



Twin Lever

Size	Description	Material	Part #	Price/Ea	Pkg Qty
3"	single handle cap	aluminum hardcoat	300TFLC	\$45.90	10
4"	single action locking cap	aluminum	SA4050AL	57.30	10
4"	twin lever cap	bronze	TL4070BZ	96.70	10

4" Vapor Cap

- Special locking cap for underground tank vapor outlet VR4086 and tanker vapor valves.
- Bronze cam arms
- Aluminum painted vapor recovery orange

Size	Part #	Price/E
4"	VR4050AL	\$62.85



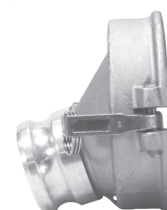
API Dust Cap and Offloading Angle Spouts

- For offloading through API Adapter

Size	Description	Part #	Price/Ea	Pkg Qty
4" API	API Dust Cap	41450-DCAL *	\$98.70	5



Adapter Size	Coupler Size	Description	Part #	Price/Ea	Pkg Qty
3"	4" API	API offloading 22½° angle spout	31440-225AL *	\$136.10	10
4"	4" API	API offloading 22½° angle spout	41440-225AL *	140.40	10
		Handle for API dust caps and spouts	3HR2142BR	6.55	---
		Handle pin for API dust caps and spouts	300-P	.95	---
		Gasket for API dust caps and spouts	2143SEALBU	10.00	10



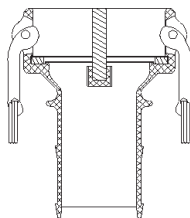
* Price includes chain

Optional Pkg./Box Quantity Shown

Dixon / Andrews Vapor Recovery Couplers

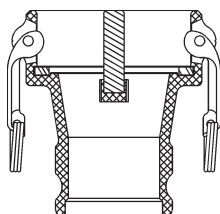
- Cast aluminum body
- Bronze arms with stainless steel pins
- Plated carbon steel finger rings
- Buna-N gasket

Coupler with Probe x Hose Shank



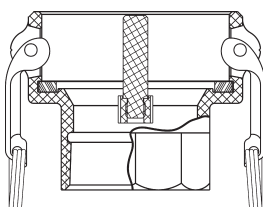
Coupler Size	Hose Shank Size	Part #	Price / Each
4"	3"	4030-CVR-AL	\$93.05
4"	4"	400-CVR-AL	94.35

Coupler with Probe x Adapter



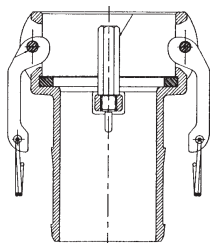
Coupler Size	Adapter Size	Part #	Price / Each
4"	3"	4030-DAVR-AL	\$97.55

Coupler with Probe x Female NPT



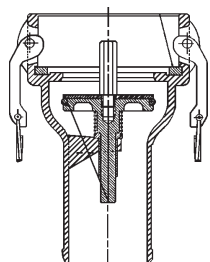
Coupler Size	Female NPT Size	Part #	Price / Each
4"	3"	4030-DVR-AL	\$103.10
4"	4"	400-DVR-AL	104.45

Dixon Bayco Vapor Recovery Couplers



VRC3000AL

- For use with 3" vapor hose
- Cast aluminum body
- Bronze arms with stainless steel pins and finger rings
- Buna-N gasket
- **VR4030CS-AL** has Viton® O-ring poppeted seal



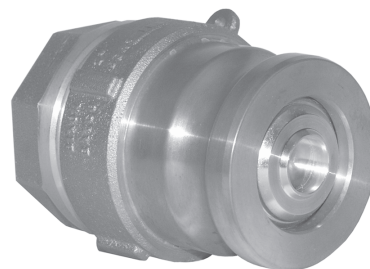
VR4030CS-AL

Description	Part #	Price/E
3" coupler with probe x 3" hose shank	VRC3000AL	\$105.15
4" coupler with poppet and probe x 3" hose shank	VR4030CS-AL	156.70

Dixon Bayco BA Dry Disconnect Adapters **NEW**

- Aluminum dry disconnect adapter with 2" female NPT thread
- Interchanges with OPW Kamvalok® 2" coupler
- Aluminum body, brass poppet and stainless spring

Size	Seal Material	Part #	Price/E
2"	Buna	DBA11-200	\$161.45
2"	Viton®	DBA12-200	162.30



Tank Truck Flanged Sight Flow Indicators

- Replaces the acrylic sight glass commonly found on tank trucks
- Allows for visual identification of the fuel grade prior to opening the valve
- Works with tank truck flanged butterfly valves found on gasoline trucks
- Sight glass can be replaced without removal from the pipeline
- Rugged cast aluminum housing is more durable than acrylic sight glass

NEW

Description	Part #	Price/Ea
Short housing	400-SFI-ALS	\$130.00
Replacement plexiglass	4SFIPSGS	45.00
Replacement buna-N O-ring	O249BU	3.30
Viton® plexiglass gasket	4SFI-G-VI	34.90



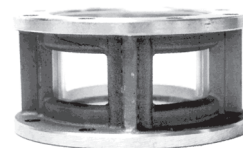
- Allows for visual identification of the fuel grade prior to opening the valve
- Works with tank truck flanged butterfly valves found on gasoline trucks
- 4-3/8" flow
- Larger I.D. allows tank truck flanged butterfly valves to connect to either end of the 400-SFI-AL
- Rated to **150 PSI**

Description	Part #	Price/Ea	Pkg Qty
4" sight flow indicator	400-SFI-AL	\$147.45	5
Replacement plexiglass	4SFIPSG	60.00	1
Replacement buna-N O-ring	O249BU	3.30	2
Viton® plexiglass gasket	4SFI-G-VI	34.90	2



- Allows for visual identification of the fuel grade prior to opening the valve
- 4" flow

Description	Part #	Price/Ea	Pkg Qty
4" sight flow indicator	4-1460-AL	\$128.40	10
Replacement plexiglass	4PSG	61.10	10
Replacement Buna-N O-ring	O246BU	3.35	10


M

For tank truck flange gaskets, see page 36
For dimensional information on tank truck flange drilling, see page 451

Note: Due to the proprietary blending of petroleum products, Dixon recommends that the thermoplastic tubing and the Viton® gaskets be immersion tested in the product to be handled to insure compatibility.

**SAFETY
ALERT**

Tank Transport Equipment



Fusible Pipe Caps - NPSM Thread

Size	<i>Stainless Steel *</i> Part #	Price/E	Pkg Qty	<i>Aluminum</i> Part #	Price/E	Pkg Qty	<i>Malleable Iron</i> Part #	Price/E	Pkg Qty
3"	300-SFC-SS	\$81.85	10	300-SFC-AL	\$76.70	10	300-SFC-MI	\$76.70	10



Pipe Caps - NPSM Thread

Size	<i>Stainless Steel *</i> Part #	Price/E	Pkg Qty	<i>Aluminum</i> Part #	Price/E	Pkg Qty	<i>Malleable Iron</i> Part #	Price/E	Pkg Qty
2"	200-PC-SS	\$71.70	-	200-PC-AL	---	---	200-PC-MI	\$22.70	---
3"	300-PC-SS	63.90	10	300-PC-AL	\$27.15	10	300-PC-MI	32.70	10
4"	400-PC-SS	162.55	-	400-PC-AL	---	---	400-PC-MI	---	---



Reducers - Female NPSM x Male NPT

Size	<i>Stainless Steel *</i> Part #	Price/E	Pkg Qty	<i>Aluminum</i> Part #	Price/E	Pkg Qty	<i>Malleable Iron</i> Part #	Price/E	Pkg Qty
3" x 2"	3020-RD-SS	\$100.15	10	3020-RD-AL	\$38.15	10	3020-RD-MI	\$43.05	10
4" x 3"	4030-RD-SS	405.00	---	4030-RD-AL	---	---	4030-RD-MI	---	---



Reducing Caps - Female NPSM x Female NPT

Size	<i>Stainless Steel *</i> Part #	Price/E	Pkg Qty
3" x 1"	3010-RC-SS	\$136.95	10

Tank Transport Equipment - Intermodal



Pipe Caps - BSPP Thread

Size	<i>Stainless Steel *</i> Part #	Price/E	Pkg Qty
3"	300PCSSAP	\$72.05	10



Thread Adapters - Female BSPP x Male NPT

Size	<i>Stainless Steel *</i> Part #	Price / Each
3" x 2"	3020RDSSAP	\$129.15
3" x 3"	3030RDSSAP	159.85



Cam and Groove Adapters - BSPP Thread

Size	<i>Stainless Steel *</i> Part #	Price / Each
3"	300ASSAP	\$118.80
3" x 2½"	3025ASSAP~	291.60

* Teflon® gaskets are standard in stainless steel fittings.

Optional Pkg./Box Quantity Shown

Gaskets and Washers

Size	<i>Buna-N</i> Part #	Price/E	Pkg Qty	<i>Teflon®</i> Part #	Price/E	Pkg Qty	<i>Neoprene</i> Part #	Price/E	<i>Viton®</i> Part #	Price/E
1½"	---	---	---	150GPCTF	\$3.65	---	---	---	---	---
2"	200GPCBU	\$1.10	25	200GPCTF	3.05	10	KNW25	\$.60	KVW25	\$7.60
3"	300GPCBU	1.40	25	300GPCTF	4.60	25	KNW35	1.10	KVW35	16.45
4"	---	---	---	400GPCTF	9.15	---	KNW40	1.60	---	---

Automatic Shut-Off Nozzles

Inlet Size	Spout Size	Part #	Price/E
1¼"	1½"	1144D	\$539.70
1½"	1½"	1124D	539.70

- For card lock and truck refueling stations
- Venturi type automatic shut-off
- High pressure design for up to 80 gpm flow (requires minimum 7.5 gpm for auto shut-off)
- Detachable trigger ratchet
- Aluminum construction with bronze trigger



Ball Nozzles for Bulk Delivery

Without Spout

Swivel Inlet	Spout Outlet	Part #	Price/E
1¼"	1¼"	BL144ANS	\$500.15
1½"	1½"	BL124ANS	500.15

- Rugged construction for rapid fuel oil transfer/delivery
- Built-in swivel inlet with check valve outlet
- Available with or without spout



With Spout

Swivel Inlet	Spout Outlet	Part #	Price/E
1¼"	1¼"	BL144A	\$542.90
1½"	1½"	BL124A	542.90

Repair Kits

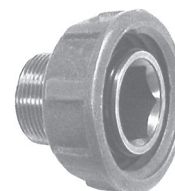
Description	Part #	Price/E
Spout/Check Valve Seal Kit	BL-RK1	\$25.90
Swivel Seal Kit	BL-RK2	16.00
Ball Seal Kit	BL-RK3	17.30
Shaft Seal Kit	BL-RK4	38.55



Swivel Nut Pipe Adapters for Ball Nozzles

- Nozzle connectors are manufactured from rugged cast bronze
- Short body reduces overall length of nozzle
- Interchangeable with other manufacturer's nozzles

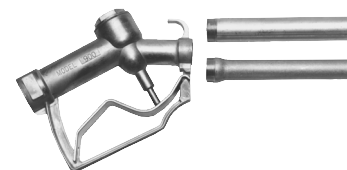
Inlet Size	Outlet	Part #	Price/E
1¼"	Adapter	BL002	\$79.45
1½"	Adapter	BL001	79.45



Utility Nozzles

Inlet Size	Spout Size	Part #	Price/E
¾"	¾"	900S34	\$37.35
1"	¾"	900W34S	37.35
1"	1"	900S	37.35

- For use with 12 volt pumps and gravity flow
- Die cast metal body
- Applications include construction, farm and small truck utility tanks
- **Note:** ¾" nozzle inlet uses 1" x ¾" reducer bushing, supplied



Replacement Spouts

Size	Part #	Price / Each
¾"	234-80-4	\$5.75
1"	875-4	4.70

Repair Kits

Description	Part #	Price / Each
Seal Kit	900SK	\$11.75
Trigger Kit	900TK	3.85

Nozzle Accessories

Description	Used On	Part #	Price / Each
1¼" Aluminum Spout	Pressure, Overwing and Ball Nozzles	1143A	\$49.70
1½" Aluminum Spout	Pressure, Overwing and Ball Nozzles	1125A	49.70

Pressure Nozzles for Bulk Delivery



Without Spout

Inlet Size	Spout Size	Part #	Price / Each
1 1/4"	1 1/4"	114DNS	\$249.15
1 1/2"	1 1/2"	112DNS	249.15

With Spout

Inlet Size	Spout Size	Part #	Price / Each
1 1/4"	1 1/4"	114D	\$275.00
1 1/2"	1 1/2"	112D	275.00

- Manual operation (non-automatic) for high pressures and fuel flow up to 80 gpm
- Easy opening dash pot design with shockless closing
- Detachable trigger ratchet, packing gland and seal
- Aluminum construction with bronze trigger
- Available with aluminum spout or without spout

Overwing Aircraft Nozzles



Inlet Size	Spout Size	Part #	Price/E
1 1/4"	1"	114DAVR	\$520.55
1 1/4"	1 1/4"	114D-AV	496.20
1 1/2"	1 1/2"	114D-AV-06ASM	540.35

- Manual operation (non-automatic) for high pressures and fuel flow up to 80 gpm
- Easy opening dash pot design with shockless closing
- Detachable trigger ratchet, packing gland and seal
- Aluminum construction with bronze trigger with plastic guard pad to protect wing
- Aluminum spout has cap with spring cord and a fine mesh stainless steel screen filter in the spout
- Screw attachment for ground-cable (cable not supplied)

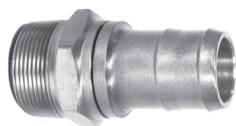
Repair Kits for Pressure Nozzles and Overwing Aircraft Nozzles

Description	Part #	Price / Each
Seal kit for 112D nozzle	112DSK	\$75.70
Seal kit for 114D nozzle	114DSK	83.60
Trigger kit 112D and 114D nozzles	114/2D-TK	16.90

Hose Swivels

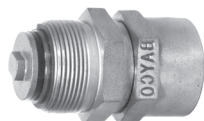
- For use with petroleum and home heating oil hose
- Prevents twisting or kinking
- Cast bronze construction

Hose Shanks



Male NPT	Shank Size	Part #	Price / Each
1 1/4"	1 1/4"	1265	\$102.00
1 1/2"	1 1/2"	1565U	106.35
1 1/2"	1-3/8"	1570	108.40

Check Valves



Male NPT	Female NPT	Part #	Price / Each
1 1/4"	1 1/4"	1280	\$123.05
1 1/2"	1 1/2"	1580U	131.25
1 1/4"	1 1/2"	1580R	149.95

Standard



Male NPT	Female NPT	Part #	Price / Each
1 1/4"	1 1/4"	1260	\$107.30
1 1/2"	1 1/2"	1560U	107.30

API Compatible Rack Cords

- FT600 and FT620 are compatible with API thermistor and optic configurations
- Cord is available in coiled or straight lengths
- Cord features a heavy highly visible safety orange jacket to meet trip hazard requirements
- Cord is bonded mechanically and has superior abrasion and oil resistance
- Cord sets are interchangeable with Scully and Civacon
- Plug body is machined from 6061 Aluminum and is color coded Optic Blue or Thermistor Green
- Button contacts are made from 316 stainless steel to prevent corrosion or galling
- All other hardware is stainless steel
- All wiring is compatible with standard Scully color codes and wiring number configurations
- The 9 pin conductor is shielded to be compatible with Scully VIP system



Model FT600 - API Thermistor Assemblies

Description	Part #	Price / Each
Plug w/ 30' coiled cable	FT600	\$801.45
Plug w/ 20' straight cable	FT600S	764.00
Replacement plug body	FT601	426.90
Replacement 30' coiled cable	FT602	348.15
Plug hanger	FT603	247.95

Model FT620 - API Optic Assemblies

Description	Part #	Price / Each
Plug w/ 30' coiled cable	FT620	\$801.45
Plug w/ 20' straight cable	FT620S	764.00
Replacement plug body	FT621	426.90
Replacement 30' coiled cable	FT622	348.15
Plug hanger	FT623	247.95

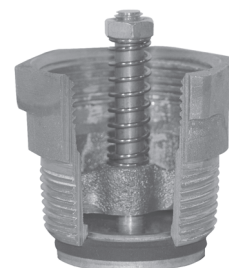
Check Valves

- For use with fuel delivery hose
- Cast bronze construction, brass stems and Buna seals
- Standard spring opens at **2 PSI**
- Heavy duty spring opens at **7 PSI**

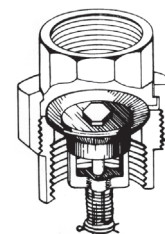
Standard Check Valves

For use between hose and nozzle

Male NPT	Female NPT	Spring type	Part #	Price / Each
1 1/4"	1 1/4"	Standard	1210	\$77.10
1 1/2"	1 1/2"	Standard	1220	69.05
1 1/2"	1 1/4"	Standard	1230	65.10
1 1/4"	1 1/4"	Heavy duty	1209	97.50
1 1/2"	1 1/2"	Heavy duty	1219	75.60



Standard Check Valve



Union Check Valve

Union Check Valves

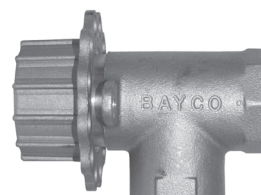
Stops suction line leaks

Female NPT	Female NPT	Part #	Price / Each
1 1/2"	1 1/2"	1590	\$84.60

Lockable Angle Valves

- Rotation of cap controls gravity flow from above ground gasoline storage tank
- Inlet (pipe from storage tank) x outlet (for hose and nozzle dispensing)
- Lockable (lock not included)
- Cast non-ferrous alloy construction

Female NPT Inlet	Female NPT Outlet	Part #	Price/E
1"	1"	500AV	\$63.00
1 1/4"	1 1/4"	525AV	62.70



Locking Fill Caps and Collars

Fill Caps

- For above ground fuel tanks
- Caps supplied with leather gasket



Pipe Size	Material	Part #	Price/E
2½"	aluminum	250A	\$37.90
2½"	bronze	250B	44.60
3½"	aluminum	350A	50.25
3½"	bronze	350B	40.65
3½"	heavy duty bronze	350BC	61.55
4"	aluminum	400A	40.55
4"	bronze	400B	45.65
4"	heavy duty bronze	400BC	56.85

Collars

- Collars have side lug for padlocking to cap
- Collar threads to pipe and is secured with set screw
- Collars supplied with set screw

Pipe Size	Material	Part #	Price/E
2½"	aluminum	250AC	\$64.75
2½"	bronze	250BC	73.30
3½"	zinc	350C	63.70
3½"	heavy duty zinc	350HD	79.55
4"	zinc	400C	39.00
4"	heavy duty zinc	400HD	58.60

Automatic Pressure / Vacuum Relief Caps



- For industrial/farm fuel storage tanks
- Pressure and vacuum valves are included to prevent pressure or vacuum buildup
- Pressure relief at **2 PSI**; vacuum relief at 0.7" HG (0.33 PSI pressure differential)
- Normally closed, stops fuel evaporation and airborne contaminants (dirt, dust)
- Lockable (lock not included)

NPS Male Inlet	Part #	Price / Each
2"	2000L	\$30.30
2½"	2500L	30.30

Standard Vent Cap



NPS Male Inlet	Part #	Price / Each
2½"	2500SFV	\$21.20

- Aluminum body
- Allows venting of tank to atmosphere at all times.
- Does not have pressure or vacuum valves.

Station Vents



Description	Part #	Price / Ea
For 1½" to 2" vapor stack	47/48	\$36.75
For 3" vapor stack	49	50.45

- Cast aluminum construction
- Screws included
- Built-in screen

Suction Deflector



Size	Part #	Price / Each
2"	A38	\$33.55

- Cast aluminum construction
- Threads to 2" suction pipe