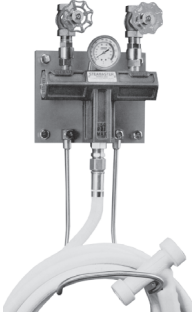


Washdown Stations and Accessories

Water-Steam Washdown Station

Fail-safe mixing station, bronze, wall mounted, safely blends steam and cold water for hot water on demand. Should cold water fail, the steam is instantly shut-off. **150 PSI** maximum, **200°F** maximum.



Part #	Price
SWDS	\$2440.95

Pressure Requirements			
Steam Pressure		Water Pressure	
Minimum	Maximum	Minimum	Maximum
80 PSI	150 PSI	50 PSI	80 PSI

All units are furnished with the following:

- Control valves
- Dial thermometer
- In-line check valves
- Stainless steel hose rack
- Mounting plate and hardware

Note: Station is not supplied with hose and nozzle.

Hot and Cold Water Mixing Station

Hot and cold water mixing station, bronze, wall mounted. **150 PSI** maximum, **200°F** maximum.



Style	Part #	Price
1	WDS1	\$907.10

All units are furnished with the following:

- Control valves
- Dial thermometer (optional)
- In-line check valves
- Stainless steel hose rack
- Mounting bracket and hardware

Note: Station is not supplied with hose and nozzle.

NEW!

Hot Water Washdown Hose



Size	Part #	Price
5/8" x 25'	SWDSHOSE25	\$535.00
5/8" x 50'	SWDSHOSE50	870.00

- Working pressure: **250 PSI**
- Temperature to: **200°F**
- White, wrapped Neoprene cover (.075" thick), braided textile reinforcement
- Smooth extruded Chlorobutyl tube
- Furnished with internal stainless steel spring guards at both ends

Hot Water Washdown Spray Nozzles

For low pressure cleaning and sanitation applications, such as food and dairy processing, tank and drum cleaning, pharmaceutical and chemical manufacturing and meat and poultry packing. Efficient design for operator comfort. 1/2" Female NPT inlet. Black or white cover.



(-W = White cover)

DO NOT USE WITH STEAM LINES

- Variable spray pattern from solid stream to 50° hollow cone
- Hose connects at base of gun for easy maneuvering
- Rubber coated handle protects hands from water temperatures to **150°F**
- **12.5 GPM** flow capacity at **150 PSI**
- Available with brass or aluminum body construction

Body	Part #	Price	Body	Part #	Price
Brass	BWSG	\$204.20	Aluminum	AWSG	\$227.25
Brass	BWSG-W	221.45	Aluminum	AWSG-W	244.60

Swivel Connectors for Washdown Spray Guns



Hose Shank



GHT Thread

NPT	Hose I.D.	Part #	Price
1/2"	1/2"	BNS44	\$41.70
1/2"	3/4"	BNS64	41.70
1/2"	3/4" FGHT	BMAS974	\$41.70

- Brass swivel body
- Stainless steel hose shank
- Brass connecting nut
- EPDM gasket connecting nut