



SAFETY SPRAY SHIELDS

FOR CONTAINING AND DETECTING HAZARDOUS LEAKS AND SPRAYS



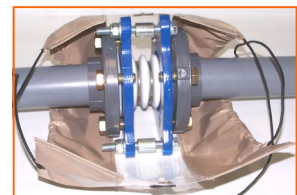
Safety
for Personnel, Equipment,
and the Environment

INTRODUCTION

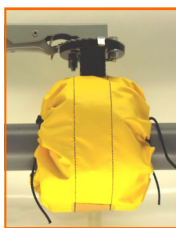
- Safety Spray Shields are designed to prevent a catastrophe by temporarily containing hazardous leaks and sprays. Leaks can occur on piping systems conveying chemicals, high temperature fluids, and steam, which can harm workers, nearby equipment, and the environment. Leaks of flammables, such as fuel or oil, can create fire and explosion hazards.
- Safety Spray Shields help meet regulatory standards set by agencies such as OSHA, EPA, MSHA, SOLAS, ABS, and DNV, and are now required by some insurance companies.
- Constructed of durable fabrics that are chemical, UV, and weather resistant, our Shields are available in Teflon®, Polypropylene, PVC, and Polyethylene. Solid styles contain a pH indicating patch which signals a leak by immediately changing color towards red if acidic or towards green if an alkali. The patch is replaceable which allows reuse of the shield.
- Our Shields are ready to install quickly and simply by one person with the equipped hook and loop fasteners and drawcord.
- We offer Shields for all sizes and ratings, both standard, non-standard, and metric(DN).
- We lead the industry in providing problem solving solutions by designing and manufacturing customs for special sizes and applications.

EXPANSION JOINT SHIELDS

- Available in same fabrics and styles as Flange Shields.
- Clear Teflon is recommended for viewing of bellows.
- Allows for lateral movement, while maintaining fit and protection.
- Available for all styles and types of Rubber, Stainless, and Teflon bellowed expansion joints, regardless of manufacturer.
- Recommended by most manufacturers of expansion joints.



VALVE SHIELDS



- Available in same fabrics and styles as Flange Shields.
- Allows for operation of valve handle or hand-wheel.
- Bonnet Shields allow for travel and opening and closing of gate or globe valve.
- Manufactured to fit all styles and types of valves:

- Ball
- Check
- Butterfly
- Gate
- Plug
- Diaphragm
- Control
- Globe

FLANGE SHIELDS

Clear Teflon®



- Clear Teflon® center strip allows for complete visual inspection.
- Sides constructed of Premium Teflon® coated glass cloth.
- Teflon® coated fiberglass or Nomex® thread and draw cord.
- Fire and tear resistant.
- Teflon® drain nipple optional.
- Max operating temperature 400°F.

Premium Teflon®



- Maximum Teflon® content fabric for extreme service and long life.
- 3-ply multi-layered construction.
- Teflon® coated fiberglass or Nomex® thread and draw cord.
- Fire and tear resistant.
- Max operating temperature of 450°F.

Standard Teflon®



- *Most popular style.*
- Teflon® coated glass cloth.
- Reinforced, 4-ply construction.
- Teflon® coated fiberglass or Nomex® thread and draw cord.
- Fire resistant.
- Maximum operating temperature of 450°F.

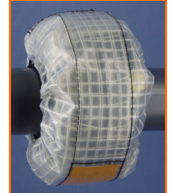
Polypropylene

- Solid woven polypropylene fabric.
- 3-ply multi-layered construction.
- Insert in center provides 4th protective layer.
- Polypropylene thread and drawstring.
- Maximum operating temperature of 200°F.



Polyethylene

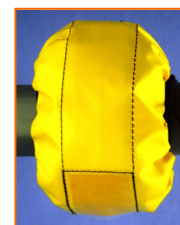
- Transparent, reinforced polyethylene fabric.
- 3-ply multi-layered construction.
- Tough poly thread and draw cord.
- Maximum operating temperature of 170°F.



Vinyl

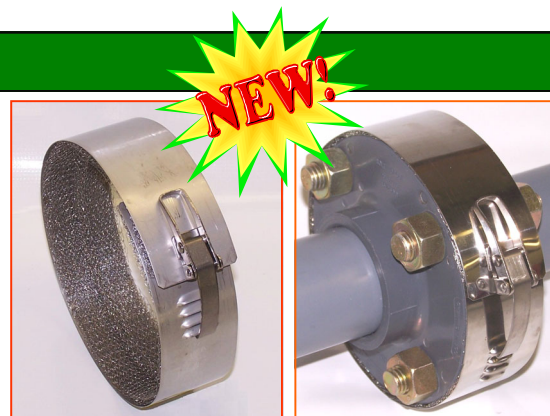


- Reinforced polyvinyl chloride fabric.
- 3-ply multi-layered construction.
- Tough poly thread and draw cord.
- Standard color is safety orange. Yellow and other colors available upon request.
- Maximum operating temperature of 170°F.



Stainless Steel

- 316 stainless steel construction.
- Layers of stainless netting absorb and dissipate pressurized spray.
- No tools required, installs quickly via adjustable quick latch.
- No sharp edges.
- Excellent for high temperature and pressure.
- Recommended for steam, flammables, and fire protection.
- Max temperature 2000°F, max pressure 3000 psi.



PIPE END COVERS



- Designed to cover the ends of pipe vent outlets on safety relief valves and rupture discs.
- Made from durable, weatherproof vinyl and Teflon® fabrics.
- Keeps out rainwater, snow, birds, and insects.
- Contains a draw cord for securing and grommet for tying rope to prevent loss.
- Available for angled and straight cut pipe ends.
- Available for all pipe diameters.

I & E COVERS

- Designed to fit instrumentation, electronics, controls, expensive and delicate equipment.
- Increases life and protects from corrosive environments.
- Clear Styles allow for viewing of positioner and actuator.
- Custom fit, regardless of length and size.



SPECIALTY SHIELDS & COVERS

- Hose
- Pipe
- Flow Indicators
- Sight Glasses
- Fittings
- Couplings
- Marine Roll Shields
- Insulated Blankets
- Fire Extinguishers
- Tarps
- Curtains
- Customs

HOW TO ORDER

- **Flanges:** specify size and rating.
- **Valves:** specify size, rating, type, model/manufacturer, and connection-flanged, socket weld, or threaded.
- **Expansions joints:** specify size, model/manufacturer, number of convolutions, or overall length.
- **All others:** fax dimensions, or contact factory.

RESISTANT GUIDE for COMMON CHEMICALS

Chemical	Maximum Temperature °F					
	PE	V	PPL	CLEAR	PTFE	316 SS
Ammonia	170	170	200	200	450	500+
Ethylene Dichloride	n/r	n/r	75	75	450	500+
Hydrochloric Acid (to 35% conc.)	140	140	200	400	450	500+
Hydrofluoric Acid (to 85% conc.)	75	75	200	n/r *	n/r *	500+
Nitric Acid (to 30% conc.)	150	150	150	300	450	500+
Oleum	n/r	n/r	n/r	75	450	500+
Sodium Hydroxide (to 50% conc.)	170	170	200	300	450	500+
Sulfuric Acid (to 30% conc.)	170	170	200	300	450	500+

* Not recommended because Shield contains fiberglass.

Other Quality Products:

Flange Isolation Gasket Kits
Flange Protectors
Nut & Bolt Protectors

Insulated Covers
Pipe Wrap & Tape
Penetration Seals

DRAKE SPECIALTIES
PO BOX 91327
LAFAYETTE, LA 70509
Phone 337-886-3161
Fax 337-886-3167
www.drakespec.com