

**TITAN**

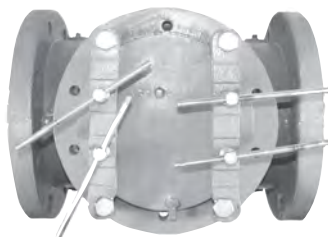
## SIMPLEX BASKET STRAINER • FLANGED ENDS

### Class 125 lb • Cast Iron • Clamped & Bolted Cover



### BS 55-CI

(Shown with Clamped Cover  
and Removable Leg Brackets)



#### Clamped Cover Design:

- 2" ~ 4" designed with (1) Tee Bolt
- 6" designed with (2) Tee Bolts
- 8" ~ 12" designed with (4) Tee Bolts

#### Models:

**BS 55-CI**  
(Clamped Cover)

**BS 65-CI**  
(Bolted Cover)

*Size Range: 2" thru 12"*

#### WORKING PRESSURES & TEMPERATURE - NON-SHOCK

ANSI 125 lb Class	BS 65-CI	BS 55-CI
WOG (Water, Oil, Gas)	200 PSI @ 150 °F	200 PSI @ 100 °F
Saturated Steam	125 PSI @ 353 °F	Not Recommended
MAX Liquid	125 PSI @ 450 °F	Not Recommended

### Features:

- TOP REMOVAL OF STRAINING ELEMENT PERMITS EASY ACCESS DURING CLEANING
- BOTH BOLTED (BS 65-CI) AND CLAMPED (BS 55-CI) COVER DESIGNS ARE AVAILABLE
- BOW-SHAPED STRAINING ELEMENT HANDLE ASSURES TIGHT SEAL IN BASKET SEAT
- INLET AND OUTLET FLANGE BOSSES ARE PROVIDED FOR GAUGE TAPS ON LARGER SIZES
- PLUGGED BOTTOM DRAIN/BLOW-OFF CONNECTION IS STANDARD ON BOTH MODELS
- OPTIONAL OPEN BOTTOM BASKET DESIGN ALLOWS FOR AUTOMATIC OR MANUAL BLOW-OFF VALVE INSTALLATION
- STRAIGHT THROUGH FLOW DESIGN RESULTS IN EXCEPTIONAL PRESSURE MAINTENANCE
- OPEN AREA IS MANY TIMES GREATER THAN CORRESPONDING PIPE SIZE HELPS TO ASSURE MINIMAL PRESSURE LOSS
- EPOXY PAINTING IS STANDARD ON BOTH UNITS
- USED FOR APPLICATIONS WHERE DEBRIS LOADING IS HIGH AND CONTINUOUS
- REMOVABLE LEG BRACKETS ARE AVAILABLE ON LARGER SIZES (8" ~ 12")

*Ideal Design for Applications Where Easy Maintenance  
and Large Capacity are Required*



# TITAN FLOW CONTROL

290 Corporate Drive  
Lumberton, NC 28358  
Tel: 910-735-0000 Fax: 910-738-3848  
titan@titanfci.com www.titanfci.com

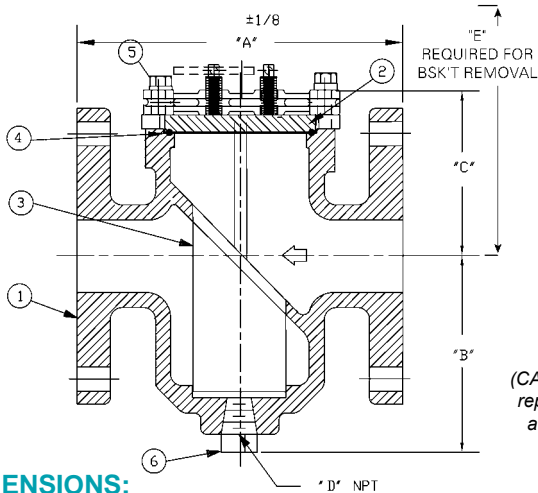
## SIMPLEX BASKET STRAINER

BS 55-CI (CLAMPED COVER)

BS 65-CI (BOLTED COVER)

Flanged Ends • Flat Faced • Cast Iron

**ANSI  
Class  
125 lb**



(CAD Illustration is representative of a 4" BS 55-CI)

### BILL OF MATERIALS

No.	PART	BS 65-CI	BS 55-CI
1	BODY	CAST IRON ASTM A-126 Gr. B	
2	COVER	CAST IRON ASTM A-126 Gr. B	
3	BASKET*	304 STAINLESS STEEL	
4	GASKET*	NON-ASBESTOS	BUNA-N O-RING
5	CAP SCREWS	CARBON STEEL	
6	PLUGS BOSS/DRAIN	CAST IRON	

#### \*Recommended spare parts

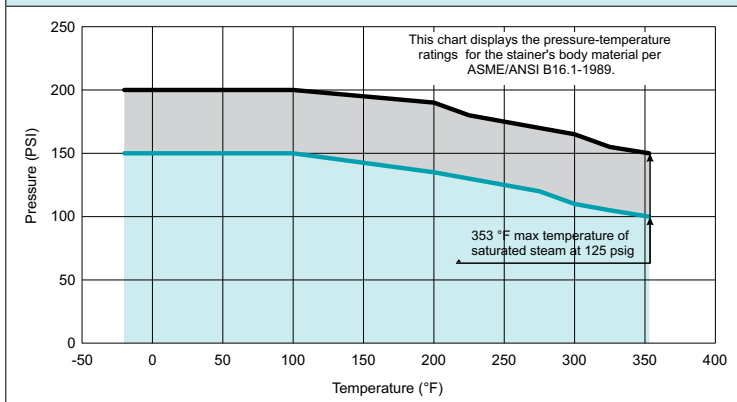
- Removable leg brackets - standard on 8" ~ 12".
- Inlet and outlet bosses - standard on 8" ~ 12".
- Inlet and outlet 1/4" taps with plugs - standard on 8" ~ 12".
- Cover 1/4" vent tap with plug - standard on 2" ~ 12".

### DIMENSIONS:

SIZE	in	2	2 1/2	3	4	5	6	8	10	12
	mm	50	65	80	100	125	150	200	250	300
A DIMENSION FACE TO FACE	in	8.62	7.56	8.75	11.18	12.50	14.00	17.12	22.00	25.25
	mm	219	193	223	284	318	356	435	559	642
B DIMENSION CTR. LINE TO BOTTOM	in	5.87	5.43	5.25	7.87	8.75	8.00	10.62	16.00	23.75
	mm	150	138	134	200	223	204	270	407	604
C DIMENSION CTR. LINE TO TOP	in	4.37	3.75	5.12	5.37	5.00	5.62	7.00	9.25	11.62
	mm	111	96	131	137	127	143	178	235	296
D DIMENSION NPT BLOW-OFF	in	1/2	3/4	3/4	3/4	3/4	1 1/4	1 1/2	1 1/2	2
	mm	15	20	20	20	20	32	40	40	50
E DIMENSION SCREEN REMOVAL	in	10.87	10.87	11.25	15.50	15.50	18.25	23.37	29.00	37.50
	mm	277	277	286	394	394	464	594	737	953
ASSEMBLED WEIGHT	lb	27.0	30.0	40.0	76.0	93.0	154.0	244.0	416.0	752.0
	kg	12.2	13.6	40.0	76.0	93.0	154.0	244.0	416.0	752.0
Flow Coefficient	C <sub>v</sub>	43	84	130	290	490	780	1600	3300	5100

\*Weights and dimensions are for reference only. When required, request certified drawings. Clamped cover units add approximately 5% to the weight shown.

### PRESSURE-TEMPERATURE: CAST IRON ASTM A126 Gr. B Class 125



**TESTING:** Strainers are individually, hydrostatically tested at 1.5 x the 100 °F rating, rounded off to the next higher 25 PSI measurement .

### WORKING PRESSURES & TEMPERATURE - NON-SHOCK

ANSI 125 lb Class	BS 65-CI	BS 55-CI
WOG (Water, Oil, Gas)	200 PSI @ 150 °F	200 PSI @ 100 °F
Saturated Steam	125 PSI @ 353 °F	Not Recommended
Max Liquid	125 PSI @ 450 °F	Not Recommended

### STANDARD SCREEN SELECTIONS

Sizes	Water Service	Open Area	Steam	Open Area
2" ~ 4"	.0625 (1/16)	37%	.045 (3/64)	36%
5" ~ 12"	.125 (1/8)	40%	.045 (3/64)*	36%

\*For 10" and above, consult factory on screen selections for steam.

### REFERENCED STANDARDS

Design	ANSI B16.1
Shell Wall Thickness	ANSI B16.1
Pressure vs. Temp. Rating	ANSI B16.1

Ordering Code: \_\_\_\_\_ Size: \_\_\_\_\_  
 Customer/Project: \_\_\_\_\_  
 Inq./P.O. No.: \_\_\_\_\_  
 Titan Order No.: \_\_\_\_\_  
 Certified By: \_\_\_\_\_ Date: \_\_\_\_\_

### Engineering Specification Submittal

Titan FCI makes every effort to ensure the information presented on our literature accurately reflects exact product specifications. However, as changes occur, there may short-term differences between actual product specifications and the data on our literature. Titan FCI reserves the right to make specification changes to improve our products without prior notification.

### BASKET STRAINER • BS 55-CI & BS 65-CI

Size	Model Number	Description	Drawing No.