

**TITAN**

## SIMPLEX BASKET STRAINER • THREADED & FLANGED ENDS

### CLASS 125 lb • CAST IRON BODY



Knob Type/Quick Opening Cover  
(Quick-open cover is standard)

### Models:

**BS 25-CI** (Cast Iron 125 lb - Threaded)  
(Quick-open cover is standard)

**BS 25F-CI** (Cast Iron 125 lb - Flanged)  
(Quick-open cover is standard)

#### WORKING PRESSURES & TEMPERATURE - NON-SHOCK

ANSI 125 lb Class	BS 25-CI <sup>(1)</sup>	BS 25F-CI <sup>(1)</sup>
WOG (Water, Oil, Gas)	200 PSI @ 100 °F	200 PSI @ 100 °F
Saturated Steam	Not Recommended	Not Recommended
MAX Liquid	Not Recommended	Not Recommended

1. Knob type cover not recommended for steam or high temperature.

### Features:

- QUICK-OPEN COVER (KNOB TYPE) AND FULL ANSI RATED BOLTED COVER ARE AVAILABLE
- THREADED SIZES: 3/8" THROUGH 3" - FLANGED SIZES: 1" THROUGH 8"
- LARGE STRAINING CAPACITY WITH A MINIMUM 6 TO 1 RATIO TO CONNECTING PIPE
- USED WHEN DEBRIS LOADING IS HIGH AND THE COLLECTION OF SOLIDS IS REQUIRED
- BOTH THE COVER AND BASKET ARE EQUIPPED WITH O-RINGS TO REDUCE MAINTENANCE COSTS AND INCREASE SERVICE LIFE
- PRECISION MACHINED SEAT ENABLES FINE FILTRATIONS
- GASKET IS ENCAPSULATED IN MACHINED GROOVE
- BOTTOM DRAIN/BLOW-OFF CONNECTION AND SAFETY VENT IN COVER ARE FURNISHED WITH STEEL PLUG - STANDARD
- CAST IRON UNITS ARE EPOXY PAINTED - STANDARD
- CARBON STEEL AND STAINLESS UNITS ARE ALSO AVAILABLE
- BOTH FLANGED AND THREADED END CONNECTIONS ARE AVAILABLE



Full ANSI Rated  
Bolted Cover

*Ideal Design for Applications Where Easy Maintenance  
and Large Capacity are Required*



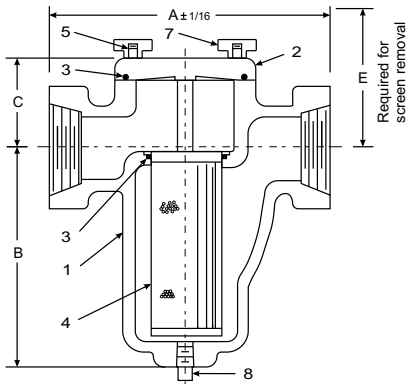
**TITAN FLOW CONTROL**  
LUMBERTON, NC USA

**SIMPLEX BASKET STRAINER • CAST IRON**

BS 25-CI (125 LB - THREADED ENDS)

BS 25F-CI (125 LB - FLANGED ENDS)

**ANSI Class 125 LB**



• CAD illustration displays threaded end connection unit only. Table below contains dimensions for both threaded and flanged type units.

• Quick-open type cover is shown. Quick-open cover is standard. Part number 6 (Nuts) only applies to bolted type covers.

**BILL OF MATERIALS**

No.	PART	BS 25-CI & BS 25F-CI
1	BODY	CAST IRON ASTM A126 Gr. B
2	COVER	CAST IRON ASTM A126 Gr. B
3	O-RING/GASKET <sup>(1)</sup>	BUNA-N
4	BASKET <sup>(1)</sup>	TYPE 304 STAINLESS STEEL
5	STUDS	A193-B7 ALLOY STEEL
6	NUTS <sup>(2)</sup>	A194-2H CARBON STEEL
7	KNOBS	DUCTILE IRON ASTM A536
8	DRAIN PLUG	CARBON STEEL

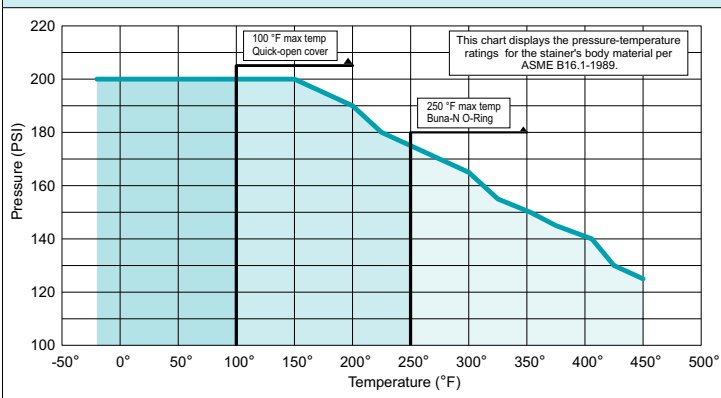
- Denotes recommended spare parts.
- Part 6 (Nuts) only applies to bolted covers

**DIMENSIONS**

	in	3/8	1/2	3/4	1	1 1/4	1 1/2	2	2 1/2	3	4	6	8
	mm	10	15	20	25	32	40	50	65	80	100	150	200
<b>A<sub>1</sub> DIMENSION</b> FACE TO FACE (THREADED)	in	4.562	4.562	4.562	5.312	6.312	6.312	8.25	9.625	11.25	n/a	n/a	n/a
	mm	116	116	116	135	161	161	210	245	286	n/a	n/a	n/a
<b>A<sub>2</sub> DIMENSION</b> FACE TO FACE (FLANGED)	in	n/a	n/a	n/a	5.687	n/a	7.00	9.00	10.375	11.75	15.00	20.25	27.375
	mm	n/a	n/a	n/a	145	n/a	178	229	264	299	381	515	696
<b>B<sub>1</sub> DIMENSION</b> CTR. LINE TO BOTTOM (THREADED)	in	4.00	4.00	4.00	4.687	6.50	6.50	7.875	8.75	11.375	n/a	n/a	n/a
	mm	102	102	102	120	166	166	201	223	289	n/a	n/a	n/a
<b>B<sub>2</sub> DIMENSION</b> CTR. LINE TO BOTTOM (FLANGED)	in	n/a	n/a	n/a	4.687	n/a	6.50	8.00	8.75	11.50	13.75	20.00	24.24
	mm	n/a	n/a	n/a	120	n/a	166	204	223	293	350	508	616
<b>C<sub>1</sub> DIMENSION</b> CTR. LINE TO TOP (THREADED)	in	2.50	2.50	2.50	2.75	3.00	3.00	3.625	4.00	4.50	n/a	n/a	n/a
	mm	64	64	64	70	77	77	93	102	115	n/a	n/a	n/a
<b>C<sub>2</sub> DIMENSION</b> CTR. LINE TO TOP (FLANGED)	in	n/a	n/a	n/a	3.00	n/a	3.00	3.75	4.00	4.75	6.18	7.88	10.55
	mm	n/a	n/a	n/a	77	n/a	77	96	102	121	157	201	268
<b>D DIMENSION</b> NPT BLOW-OFF (BOTH)	in	3/8	3/8	3/8	3/8	1/2	1/2	3/4	1	1	2	2	2
	mm	10	10	10	10	15	15	20	25	25	50	50	50
<b>E DIMENSION</b> SCREEN REMOVAL (BOTH)	in	4.812	4.812	4.812	5.875	8.125	8.125	10.125	11.875	14.812	19.875	29.125	37.125
	mm	123	123	123	150	207	207	258	302	377	505	740	943
<b>ASSEMBLED WEIGHT (THREADED)</b>	lb	4.8	4.8	5.0	6.5	11.5	11.5	22.8	33.8	51.0	n/a	n/a	n/a
	kg	2.2	2.2	2.3	2.9	5.2	5.2	10.3	15.3	23.1	n/a	n/a	n/a
<b>ASSEMBLED WEIGHT (FLANGED)</b>	lb	n/a	n/a	n/a	9.0	n/a	15.0	26	38.0	62.0	118.0	266.0	518.0
	kg	n/a	n/a	n/a	4.1	n/a	6.8	11.8	17.2	28.1	53.5	120.5	234.7
<b>Flow Coefficient</b>	C <sub>v</sub>	14	14	14	24	43	43	70	120	150	260	540	950

Dimensions and weights are for reference only. When required, request certified drawing.

**PRESSURE-TEMP: A126 Gr. B Cast Iron • ANSI Class 125 LB**



Testing: Hydrostatically tested at 1.5 x the 100 °F rating, rounded off to the next higher 25 PSI measurement.

**WORKING PRESSURES & TEMPERATURE - NON-SHOCK**

ANSI 125 lb	BS 25-CI <sup>(1)</sup>	BS 25F-CI <sup>(1)</sup>
WOG (Water, Oil, Gas)	200 PSI @ 100 °F	200 PSI @ 100 °F
Saturated Steam	Not Recommended	Not Recommended
Max Liquid	Not Recommended	Not Recommended

1. Knob type cover not recommended for steam or high temperature.

**STANDARD SCREEN SELECTIONS**

Sizes	Water Service	Open Area	Steam	Open Area
3/8" ~ 2"	.062 (1/16)	37%	.033 (1/32)	28%
2 1/2" ~ 3"	.062 (1/16)	37%	.045 (3/64)	36%

A wide range of wire mesh and perforations are available.

**REFERENCED STANDARDS**

Design	ANSI B16.4
Shell Wall Thickness	ANSI B16.4
Pressure vs. Temp. Rating	ANSI B16.4

Ordering Code: \_\_\_\_\_ Size: \_\_\_\_\_  
 Customer/Project: \_\_\_\_\_  
 Inq./P.O. No.: \_\_\_\_\_  
 Titan Order No.: \_\_\_\_\_  
 Certified By: \_\_\_\_\_ Date: \_\_\_\_\_

**Engineering Specification Submittal**

Titan FCI makes every effort to ensure the information presented on our literature accurately reflects exact product specifications. However, as changes occur, there may short-term differences between actual product specifications and the data on our literature. Titan FCI reserves the right to make specification changes to improve our products without prior notification.

**SIMPLEX BASKET STRAINER • MODELS: BS 25/25F-CI**

Size	Model Number	Description	Drawing No.