



TITAN FLOW CONTROL, INC.

## SIMPLEX BASKET STRAINER ♦ ANSI CLASS 150 FLAT FACE FIBERGLASS REINFORCED PLASTIC (FRP)

MODELS: BS 55-FRP  
(FIBERGLASS)

SIZES: 4" ~ 20"



## FEATURES

- ♦ **STANDARD GRADE FRP DESIGNED FOR COMMERCIAL SYSTEMS**  
FOR LOW PRESSURE/TEMPERATURE APPLICATIONS, TITAN FCI OFFERS OUR STANDARD GRADE FRP STRAINER CONSTRUCTED FROM ISOPHTHALIC POLYESTER WITH STAINLESS STEEL BASKET INSERTS. PRESSURE TESTED TO 75 PSI. FLANGED CONNECTIONS ARE DRILLED TO 150 LB ANSI STANDARD.
- ♦ **PREMIUM GRADE FRP ALSO AVAILABLE**  
FOR MORE SEVERE SERVICE CONDITIONS, TITAN FCI CAN PROVIDE A PREMIUM GRADE FRP STRAINER CONSTRUCTED FROM EITHER EPOXY VINYL ESTER OR CHLORENDIC POLYESTER. THIS GRADE OF FRP PROVIDES SUPERB CORROSIVE, ABRASIVE AND HEAT RESISTANCE AND IS APPROPRIATE FOR SERVICE CONDITIONS UP TO 150 PSI WOG. IT IS A LOGICAL ALTERNATIVE TO RUBBER LINED STRAINERS AS WELL AS STRAINERS CONSTRUCTED FROM HIGH COST, EXOTIC ALLOYS SUCH AS ALLOY 20, HASTELLOY-C, MONEL, AND ALUMINUM BRONZE.
- ♦ **AVAILABLE AS A REDUCING STRAINER**  
THE OUTLET SIZE CAN BE SIZED SMALLER (CONCENTRICALLY OR ECCENTRICALLY) THAN THE INLET SIZE TO ALLOW FOR LINE SIZE REDUCTION. ADDITIONALLY, LARGER STRAINER BODIES CAN BE FITTED WITH BOTH SMALLER INLET AND OUTLET SIZES IF A LARGER BASKET AREA IS DESIRED FOR EXTRA CAPACITY.
- ♦ **UNIQUE FEATURES**  
QUICK-OPENING COVER, HIGH STRENGTH-TO-WEIGHT RATIO, LOW INSTALLATION COST, FIELD REPAIRABLE AND SEE-THROUGH ACRYLIC COVER. ON LARGER STRAINERS, THE COVER CAN BE CONSTRUCTED FROM FRP WITH AN CLEAR ACRYLIC 8" DIAMETER VIEWPORT.
- ♦ **LOWER LOSSES - INCREASED TIME BETWEEN CLEANING**  
THE FRP SERIES STRAINERS ARE BUILT WITH A LARGE OUTLET AREA IN THE BASKET CHAMBER. THIS RESULTS IN VERY LOW PRESSURE LOSSES INITIALLY AND MUCH GREATER DEBRIS LOADING BEFORE THE PRESSURE DROP ACROSS THE STRAINER RISES TO THE POINT WHERE CLEANING IS REQUIRED.

## TECHNICAL

### MAX WORKING PRESSURE

ISOPHTHALIC POLYESTER  
CONSTRUCTION

50 PSI @ 80 °F

EPOXY VINYL ESTER OR CHLORENDIC  
POLYESTER CONSTRUCTION

150 PSI @ 150 °F

## APPLICATIONS

**MARKETS:** CHEMICAL PROCESSING, WATER TREATMENT, FOOD PROCESSING, PULP AND PAPER MILLS, STEEL PROCESSING, PHARMACEUTICAL INDUSTRY, AND POWER PLANTS.

**SERVICE:** ACID PLANTS, PICKLING, PLATING, CHEMICAL STRAINING (ACIDS AND BASES), HIGH PURITY PROCESSES, AND SEA/BRACKISH WATER.

*The above data represents common market and service applications. No representation or guarantee, expressed or implied, is given due to the numerous variations of concentrations, temperatures and flow conditions that may occur during actual service.*

## TITAN FLOW CONTROL, INC.

YOUR PIPELINE TO THE FUTURE!

Tel: 910-735-0000 ♦ Fax: 910-738-3848 ♦ titan@titanfci.com ♦ www.titanfci.com  
290 Corporate Drive ♦ PO Box 7408 ♦ Lumberton, NC 28358



**TITAN FLOW CONTROL, Inc.**

290 Corporate Drive  
Lumberton, NC 28358  
Tel: 910.735.0000  
Fax: 910.738.3848

E-mail: titan@titanfci.com  
Web: www.titanfci.com

**SIMPLEX BASKET STRAINER • FLAT FACE  
FIBERGLASS REINFORCED PLASTIC  
MODEL: BS 55-FRP (FIBERGLASS)**

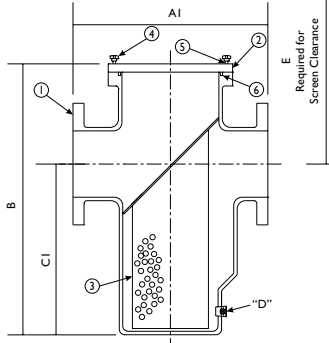
ANSI Class  
150 lb

**BILL OF MATERIALS (1)**

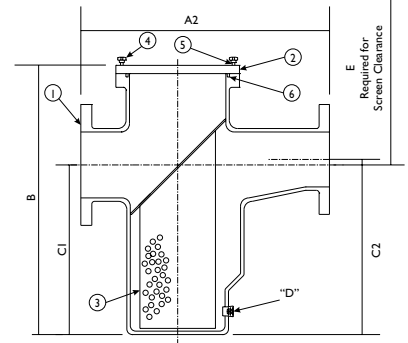
| No. | PART        | BS 55-FRP   |
|-----|-------------|---|
| 1   | Body        | Fiberglass Reinforced Plastic                             |
| 2   | Cover       | Acrylic or Fiberglass Reinforced Plastic                  |
| 3   | Basket (1)  | Stainless Steel Type 304                                  |
| 4   | Hand Knobs  | Fiberglass Reinforced Plastic with Stainless Steel Insert |
| 5   | Eye Bolts   | Stainless Steel   |
| 6   | O-Rings (1) | Ethylene Propylene  |

1. Denotes recommended spare parts.

Non-Reducer Type



Reducer Type: (Eccentric Type Shown)



**DIMENSIONS AND WEIGHT DATA**

| Inlet | Outlet | A1 (Face-to-Face)<br>Non-Reducing & Std. Reducing Units Only |      | A2 (Face-to-Face)<br>Concentric & Eccentric Reducing Units Only |      | B (Overall Height)<br>All Units |      | C1 (Centerline-to-Bottom)<br>All Units |     | C2 (Centerline-to-Bottom)<br>Eccentric Reducing Only |     | D (Drain Plug) |     | E (Screen Clearance) |      | Weight |       |
|-------|--------|--|------|---|------|---------------------------------|------|--|-----|--|-----|----------------|-----|----------------------|------|--------|-------|
|       |        | in   | mm   | in  | mm   | in                              | mm   | in                                     | mm  | in   | mm  | in             | mm  | in                   | mm   | lb     | kg    |
| 4     | 4      | 16.625   | 422  | ---   | ---  | 21.5                            | 546  | 12.0                                   | 304 | ---  | --- | 3/4            | 20  | 31                   | 787  | 40     | 18.1  |
| 4     | 3      | 16.625   | 422  | 20.625  | 523  | 21.5                            | 546  | 12.0                                   | 304 | 12.5   | 317 | 3/4            | 20  | 31                   | 787  | 40     | 18.1  |
| 4     | 2.5    | 16.625   | 422  | 20.625  | 523  | 21.5                            | 546  | 12.0                                   | 304 | 13.75  | 349 | 3/4            | 20  | 31                   | 787  | 40     | 18.1  |
| 4     | 2      | 16.625   | 422  | 20.625  | 523  | 21.5                            | 546  | 12.0                                   | 304 | 13.0   | 330 | 3/4            | 20  | 31                   | 787  | 40     | 18.1  |
| 6     | 6      | 17.625   | 447  | ---   | ---  | 25.25                           | 641  | 15.5                                   | 393 | ---  | --- | 1 1/4          | 32  | 35                   | 889  | 52     | 23.6  |
| 6     | 5      | 17.625   | 447  | 22.625  | 574  | 25.25                           | 641  | 15.5                                   | 393 | 16.0   | 406 | 1 1/4          | 32  | 35                   | 889  | 52     | 23.6  |
| 6     | 4      | 17.625   | 447  | 22.625  | 574  | 25.25                           | 641  | 15.5                                   | 393 | 16.5   | 419 | 1 1/4          | 32  | 35                   | 889  | 52     | 23.6  |
| 6     | 3      | ---  | ---  | 22.625  | 574  | 25.25                           | 641  | 15.5                                   | 393 | 17.0   | 431 | 1 1/4          | 32  | 35                   | 889  | 52     | 23.6  |
| 6     | 2.5    | ---  | ---  | 22.625  | 574  | 25.25                           | 641  | 15.5                                   | 393 | 17.5   | 444 | 1 1/4          | 32  | 35                   | 889  | 52     | 23.6  |
| 8     | 8      | 23.5   | 596  | ---   | ---  | 30.25                           | 768  | 17.5                                   | 444 | ---  | --- | 1 1/2          | 40  | 45                   | 1143 | 85     | 38.0  |
| 8     | 6      | 23.5   | 596  | 31.0  | 787  | 30.25                           | 768  | 17.5                                   | 444 | 18.5   | 469 | 1 1/2          | 40  | 45                   | 1143 | 85     | 38.0  |
| 8     | 5      | 23.5   | 596  | 31.0  | 787  | 30.25                           | 768  | 17.5                                   | 444 | 19.0   | 482 | 1 1/2          | 40  | 45                   | 1143 | 85     | 38.0  |
| 8     | 4      | ---  | ---  | 31.0  | 787  | 30.25                           | 768  | 17.5                                   | 444 | 19.5   | 495 | 1 1/2          | 40  | 45                   | 1143 | 85     | 38.0  |
| 8     | 3      | ---  | ---  | 31.0  | 787  | 30.25                           | 768  | 17.5                                   | 444 | 20.0   | 508 | 1 1/2          | 40  | 45                   | 1143 | 85     | 38.0  |
| 10    | 10     | 28.75  | 730  | ---   | ---  | 34.75                           | 882  | 21.5                                   | 546 | ---  | --- | 1 1/2          | 40  | 48                   | 1219 | 112    | 50.0  |
| 10    | 8      | 28.75  | 730  | 38.75   | 984  | 34.75                           | 882  | 21.5                                   | 546 | 22.5   | 571 | 1 1/2          | 40  | 48                   | 1219 | 112    | 50.0  |
| 10    | 6      | ---  | ---  | 38.75   | 984  | 34.75                           | 882  | 21.5                                   | 546 | 23.5   | 596 | 1 1/2          | 40  | 48                   | 1219 | 112    | 50.0  |
| 10    | 5      | ---  | ---  | 38.75   | 984  | 34.75                           | 882  | 21.5                                   | 546 | 24.0   | 609 | 1 1/2          | 40  | 48                   | 1219 | 112    | 50.0  |
| 10    | 4      | ---  | ---  | 38.75   | 984  | 34.75                           | 882  | 21.5                                   | 546 | 24.5   | 622 | 1 1/2          | 40  | 48                   | 1219 | 112    | 50.0  |
| 12    | 12     | 31.5   | 800  | ---   | ---  | 37.5                            | 952  | 23.0                                   | 584 | ---  | --- | 2              | 50  | 52                   | 1320 | 127    | 57.0  |
| 12    | 10     | 31.5   | 800  | 41.5  | 1054 | 37.5                            | 952  | 23.0                                   | 584 | 24.0   | 609 | 2              | 50  | 52                   | 1320 | 127    | 57.0  |
| 12    | 8      | ---  | ---  | 41.5  | 1054 | 37.5                            | 952  | 23.0                                   | 584 | 25.0   | 635 | 2              | 50  | 52                   | 1320 | 127    | 57.0  |
| 12    | 6      | ---  | ---  | 41.5  | 1054 | 37.5                            | 952  | 23.0                                   | 584 | 26.0   | 660 | 2              | 50  | 52                   | 1320 | 127    | 57.0  |
| 12    | 5      | ---  | ---  | 41.5  | 1054 | 37.5                            | 952  | 23.0                                   | 584 | 26.5   | 673 | 2              | 50  | 52                   | 1320 | 127    | 57.0  |
| 14    | 14     | 42.0   | 1066 | ---   | ---  | 48.0                            | 1219 | 31.0                                   | 787 | ---  | --- | C/F            | C/F | 65                   | 1651 | 340    | 154.0 |
| 14    | 12     | 42.0   | 1066 | 52.0  | 1320 | 48.0                            | 1219 | 31.0                                   | 787 | 32.0   | 812 | C/F            | C/F | 65                   | 1651 | 340    | 154.0 |
| 14    | 10     | ---  | ---  | 52.0  | 1320 | 48.0                            | 1219 | 31.0                                   | 787 | 33.0   | 838 | C/F            | C/F | 65                   | 1651 | 340    | 154.0 |
| 14    | 8      | ---  | ---  | 52.0  | 1320 | 48.0                            | 1219 | 31.0                                   | 787 | 34.0   | 863 | C/F            | C/F | 65                   | 1651 | 340    | 154.0 |
| 14    | 6      | ---  | ---  | 52.0  | 1320 | 48.0                            | 1219 | 31.0                                   | 787 | 35.0   | 889 | C/F            | C/F | 65                   | 1651 | 340    | 154.0 |
| 16    | 16     | 42.0   | 1066 | ---   | ---  | 48.0                            | 1219 | 31.0                                   | 787 | ---  | --- | C/F            | C/F | 65                   | 1651 | 360    | 163.0 |
| 16    | 14     | 42.0   | 1066 | 52.0  | 1320 | 48.0                            | 1219 | 31.0                                   | 787 | 32.0   | 812 | C/F            | C/F | 65                   | 1651 | 360    | 163.0 |
| 16    | 12     | ---  | ---  | 52.0  | 1320 | 48.0                            | 1219 | 31.0                                   | 787 | 33.0   | 838 | C/F            | C/F | 65                   | 1651 | 360    | 163.0 |
| 16    | 10     | ---  | ---  | 52.0  | 1320 | 48.0                            | 1219 | 31.0                                   | 787 | 34.0   | 863 | C/F            | C/F | 65                   | 1651 | 360    | 163.0 |
| 16    | 8      | ---  | ---  | 52.0  | 1320 | 48.0                            | 1219 | 31.0                                   | 787 | 35.0   | 889 | C/F            | C/F | 65                   | 1651 | 360    | 163.0 |
| 18    | 18     | 42.0   | 1066 | ---   | ---  | 48.0                            | 1219 | 31.0                                   | 787 | ---  | --- | C/F            | C/F | 65                   | 1651 | 380    | 172.0 |
| 18    | 16     | 42.0   | 1066 | 52.0  | 1320 | 48.0                            | 1219 | 31.0                                   | 787 | 32.0   | 812 | C/F            | C/F | 65                   | 1651 | 380    | 172.0 |
| 18    | 14     | ---  | ---  | 52.0  | 1320 | 48.0                            | 1219 | 31.0                                   | 787 | 33.0   | 838 | C/F            | C/F | 65                   | 1651 | 380    | 172.0 |
| 18    | 12     | ---  | ---  | 52.0  | 1320 | 48.0                            | 1219 | 31.0                                   | 787 | 34.0   | 863 | C/F            | C/F | 65                   | 1651 | 380    | 172.0 |
| 18    | 10     | ---  | ---  | 52.0  | 1320 | 48.0                            | 1219 | 31.0                                   | 787 | 35.0   | 889 | C/F            | C/F | 65                   | 1651 | 380    | 172.0 |
| 20    | 20     | 42.0   | 1066 | ---   | ---  | 48.0                            | 1219 | 32.5                                   | 825 | ---  | --- | C/F            | C/F | 68                   | 1727 | 380    | 172.0 |
| 20    | 18     | 42.0   | 1066 | 52.0  | 1320 | 48.0                            | 1219 | 32.5                                   | 825 | 33.5   | 850 | C/F            | C/F | 68                   | 1727 | 380    | 172.0 |
| 20    | 16     | ---  | ---  | 52.0  | 1320 | 48.0                            | 1219 | 32.5                                   | 825 | 34.5   | 876 | C/F            | C/F | 68                   | 1727 | 380    | 172.0 |
| 20    | 14     | ---  | ---  | 52.0  | 1320 | 48.0                            | 1219 | 32.5                                   | 825 | 35.5   | 901 | C/F            | C/F | 68                   | 1727 | 380    | 172.0 |
| 20    | 12     | ---  | ---  | 52.0  | 1320 | 48.0                            | 1219 | 32.5                                   | 825 | 36.5   | 927 | C/F            | C/F | 68                   | 1727 | 380    | 172.0 |

Dimensions and weights are for reference only. When required, request certified drawings.

C/F = Consult Factory

Ordering Code: \_\_\_\_\_ Size: \_\_\_\_\_  
 Customer/Project: \_\_\_\_\_  
 Inq./P.O. No.: \_\_\_\_\_  
 Titan Order No.: \_\_\_\_\_  
 Certified By: \_\_\_\_\_ Date: \_\_\_\_\_



**TITAN FLOW CONTROL, INC.**  
Engineering Specification Submittal

**Simplex Basket - Fiberglass Reinforced Plastic • Model: BS 55-FRP**

| Size | Model Number | Description | Drawing Number |
|------|--------------|-------------|----------------|
|      |              |             |                |