



**TITAN FLOW CONTROL**  
LUMBERTON, NC USA

FABRICATED TEE STRAINERS  
FLANGED & BUTT WELD TYPE  
MODELS: FT10, FT20, FT11, FT21

RATING:  
ANSI  
150 / 300

**BOLTED COVER DESIGN**

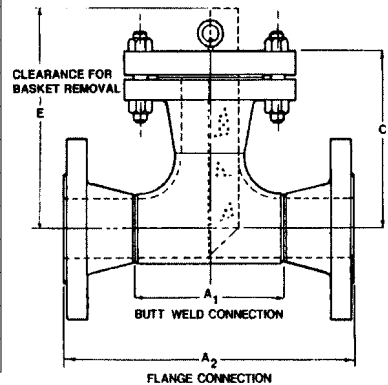
NOM. SIZE	DIMENSIONS (inches)								E	NET WEIGHT (lbs) (Flanged Units)			
	BUTT WELD CONNECTION				FLANGED CONNECTION					CLASS 150		CLASS 300	
	CLASS 150		CLASS 300		CLASS 150		CLASS 300			LID*	UNIT	LID*	UNIT
	A <sub>1</sub>	C	A <sub>1</sub>	C	A <sub>2</sub>	C	A <sub>2</sub>	C					
2	5	5 3/4	5	6 1/8	10	5 3/4	10 1/2	6 1/8	13	4	25	8	38
3	6 3/4	7 1/8	6 3/4	7 5/8	12 1/4	7 1/8	13	7 5/8	14	9	50	15	69
4	8 1/4	8 1/8	8 1/4	8 3/4	14 1/4	8 1/8	15	8 3/4	16	17	75	27	115
5	9 3/4	9 3/8	9 3/4	10 1/8	16 3/4	9 3/8	17 1/2	10 1/8	19	20	80	35	151
6	11 1/4	10 1/8	11 1/4	11	18 1/4	10 1/8	19	11	22	26	110	50	206
8	14	12 1/8	14	13	22	12 1/8	22 3/4	13	25	45	185	81	336
10	17	13 3/4	17	15	25	13 3/4	26 1/4	15	29	70	324	127	491
12	20	15 3/4	20	17 1/8	29	15 3/4	30 1/4	17 1/8	31	110	410	184	730
14	22	17 3/8	22	18 3/4	32	17 3/8	33 1/4	18 3/4	38	131	615	236	966
16	24	18 1/2	24	20	34	18 1/2	35 1/2	20	41	170	776	307	1264
18	27	20 5/8	27	22 1/8	38	20 5/8	39 1/2	22 1/8	46	209	920	390	1587
20	30	22 3/8	30	23 7/8	41 3/8	22 3/8	42 3/4	23 7/8	51	272	1180	492	1980
24	34	24 7/8	34	26 3/8	46	24 7/8	47 1/4	26 3/8	56	411	2190	594	2722

\*FORCE REQUIRED TO LIFT LID IN LBS

Dimensions are typical for 150# and 300#. Larger sizes available upon request.  
When exact dimensions are required, request certified drawings.

**MODELS:**

- Flanged 150 lb FT10
- 300 lb FT20
- Butt Weld 150 lb FT11
- 300 lb FT21



**QUICK OPENING HINGED COVER**

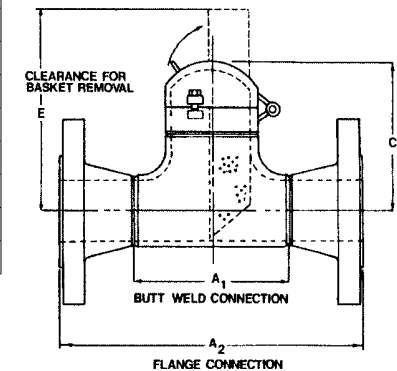
NOM. SIZE	DIMENSIONS (inches)								E	NET WEIGHT (lbs) (Flanged Units)			
	BUTT WELD CONNECTION				FLANGED CONNECTION					CLASS 150		CLASS 300	
	CLASS 150		CLASS 300		CLASS 150		CLASS 300			LID*	UNIT	LID*	UNIT
	A <sub>1</sub>	C	A <sub>1</sub>	C	A <sub>2</sub>	C	A <sub>2</sub>	C					
6	11 1/4	9 1/4	11 1/4	9 1/4	18 1/4	9 1/4	19	9 1/4	22	5	108	5	142
8	14	11 1/8	14	11 1/8	22	11 1/8	22 3/4	11 1/8	25	9	156	9	208
10	17	13 1/2	17	13 1/2	25	13 1/2	26 1/2	13 1/2	29	12	231	12	330
12	20	15 5/8	20	15 5/8	29	15 5/8	30 1/4	15 5/8	31	15	342	15	458
14	22	17 1/8	22	17 1/8	32	17 1/8	33 1/4	17 1/8	38	20	435	20	610
16	24	18 5/8	24	18 5/8	34	18 5/8	35 1/2	18 5/8	41	26	540	26	781
18	27	21 7/8	27	21 7/8	38	21 7/8	39 1/2	22 7/8	46	32	660	32	990
20	30	23 5/8	30	23 5/8	41 3/8	23 5/8	42 3/4	23 5/8	51	40	806	40	1222
24	34	27 1/8	34	27 1/8	46	27 1/8	47 1/4	26 1/8	56	58	1085	58	1755

\*FORCE REQUIRED TO LIFT LID IN LBS

Dimensions are typical for 150# and 300#. Larger sizes available upon request.  
When exact dimensions are required, request certified drawings.

**MODELS:**

- Flanged 150 lb FT13
- 300 lb FT23
- Butt Weld 150 lb FT14
- 300 lb FT24



**Design Criteria:** ASME Section VIII, ANSI 31.1, 31.3, or 31.4

Flanges may be ordered with any facings in accordance with ANSI or API codes

CLASS 150 lb CARBON STEEL	150 PSI @ 565°F
	285 PSI @ 100°F
CLASS 300 lb CARBON STEEL	300 PSI @ 838°F
	740 PSI @ 100°F

This brochure is general in nature and manufacturer reserves the right to alter materials or to make design improvements. Please request certified drawings for exact drawings when required.

Ordering Code: \_\_\_\_\_ Size: \_\_\_\_\_  
 Customer/Project: \_\_\_\_\_  
 Inq./P.O. No.: \_\_\_\_\_  
 Titan Order No.: \_\_\_\_\_  
 Certified By: \_\_\_\_\_ Date: \_\_\_\_\_



**TITAN FLOW CONTROL, INC.**  
Engineering Specification Submittal

**FABRICATED TEE STRAINERS • FT10/20/11/21/13/23/14/24**

Series	Size	Part No.	Material Trim Code	Drawing No.