


TITAN

WYE STRAINER • CAST BRONZE

Class 150, Flat Faced, Flanged End



Model YS54-BZ

Sizes 2" thru 12"

ANSI: 150 Lb. Class

ASTM: B62 Bronze

APPLICABLE STANDARDS

Shell Wall Thickness	ANSI B16.34
Pressure Temperature Rating	ANSI B16.34
End Flanges	ANSI B16.5

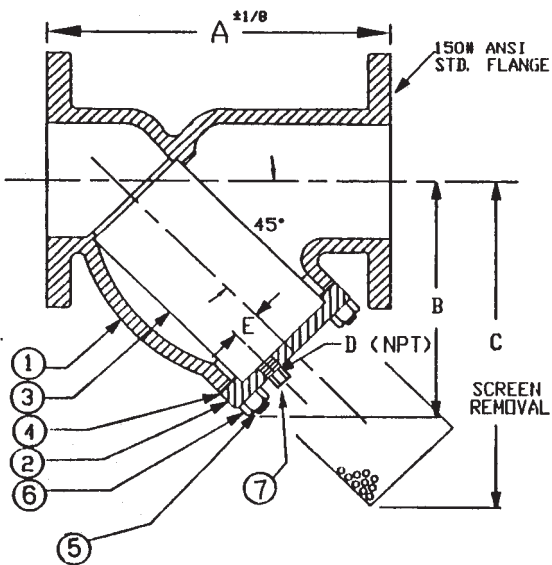
Features:

- Self Cleaning Type
- Bolted cover Flange Permits Easy Removal when the Screen must be cleaned. Also helps Assure Proper Alignment of the Screen when Reassembled
- Machined Screen Seat
- Tapped NPT Blow-off
- Drain/Blow-off Connection Furnished with Plug as Standard
- Strainer has Large Open Area - Minimum 2.5X Larger than Corresponding Pipe Size
- Body Meets Applicable ASTM Standards
- High Temperature Cover Gaskets are Set in Machined Counter Bores
- All Flanges Faced and Drilled in Accordance with ANSI B16.5 Bolt Holes are either Spot Faced or Back Faced

Ideal Design for Marine and Commercial Applications

TITAN - DESIGN & TECHNICAL DATA:

Models: YS54-BZ



BILL OF MATERIALS / PARTS LIST

No.	NAME	MATERIALS
1	Body	Bronze ASTM
2	Cover	Bronze ASTM
3	Screen*	SS304 / Monel
4	Gasket*	Non-ASBESTOS
5	Stud	Bronze
6	Nut	Bronze
7	Plug	Bronze ASTM B62

* Recommended spare parts

TITAN'S STANDARD BRONZE

is manufactured from 85-5-5-5
Bronze ASTM - B62

OPTIONAL BODY MATERIALS
ASTM B61 M-Metal
Aluminum Bronze

FF FLANGES - In accordance
with ASME B16.24

DIMENSIONS:

Size		A		B		C		D		Weight	
		in	mm	in	mm	in	mm	in	mm	Lbs.	Kgs.
2"	50	8-1/2	214	5-3/4	146	7	178	1/2	12.70	23	13
2-1/2"	65	10-1/4	261	7	180	9-3/4	248	3/4	14.29	40	23
3"	80	11-3/4	295	8	200	10	254	1	25.40	42	25
4"	100	14-1/4	360	9-1/2	240	12	305	1-1/2	57.15	53	30
5"	125	18-1/2	470	12	300	17	432	2	50.58	CF	CF
6"	150	18-1/2	469	13-1/2	340	20	508	2	50.80	CF	CF
8"	200	25	633	18	460	22-3/4	578	2	50.80	CF	CF
10"	250	26	663	19-1/2	495	34-1/2	876	2	50.80	CF	CF
12"	300	30-1/2	772	22-3/4	575	35-1/2	902	2	50.80	CF	CF

Standard Screen Selections:

Sizes	Liquid	Open Area	Steam	Open Area
1/2" to 4"	0.062 (1/16)	37%	0.033(1/32)	28%
5" to 12"	0.125 (1/8)	40%	0.045(3/64)	36%

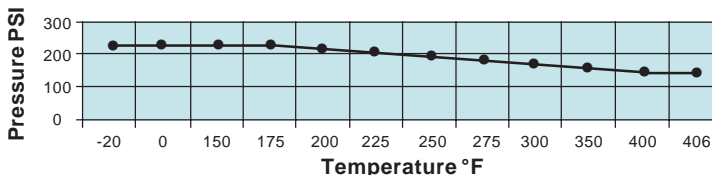
PRESSURE & TEMPERATURE RATING

Working Pressures - Non-Shock	
Steam	150 PSI @ 406°F
W O G	225 PSI @ 150°F

TESTING

All strainers individually
Hydrostatically Tested
450 psi (32 kg/cm²)

Pr. Vs. Temp ANSI 150 lbs. (Flanged)
YS54 BZ



*Installed in Vertical or
Horizontal Pipe Lines with
Blow-off Connection at
Lower End of Screen*