



WYE STRAINER • FLANGED TYPE

Class 600 Carbon & Stainless Steel



Model:

YS64 ANSI-600

SIZES: 1/2" thru 12"

APPLICABLE STANDARDS

Shell Wall Thickness	ANSI B16.34
Pressure Temp Rating	ANSI B16.34
End Flanges	ANSI B16.5

YS64

Features:

- Self Cleaning Type
- Machined Screen Seat
- Tapped NPT Blow-off
- Drain/Blow-off Connection Furnished with Plug Standard
- Optional Cover Designs (Swing, Clamp, Hinge Type)
- Epoxy Coating is Standard on all Carbon Steel Units
- Large Open Area - Minimum 2.5X Larger than Corresponding Pipe
- Bosses at the Inlet and Outlet Flanges are provided for Gauge Tappings
- High Temperature Cover Gaskets are set in Machined Counter Bores
- SS Strainers have SS Stud and Nuts
- Bolted Cover Flange Permits Easy Removal when Screen must be Cleaned Also Helps Assure Proper Alignment of the Screen when Reassembled
- All Flanges Faced and Drilled in Accordance with ANSI B16.5. Bolt Holes are either Spot Faced or Back Faced

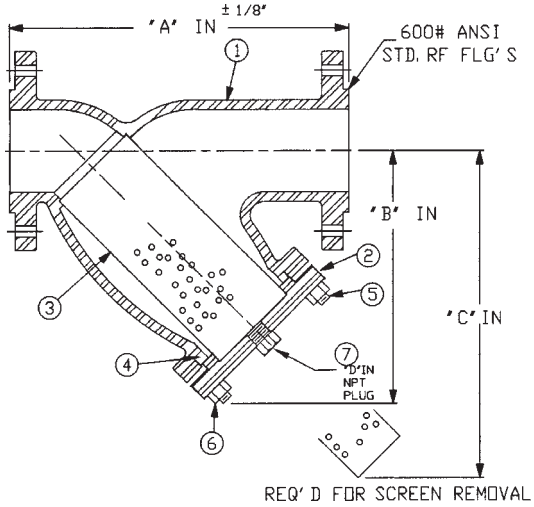
*Ideal Design for Petrochemical and Industrial Applications
With Higher Pressure and Temperatures.*



TITAN FLOW CONTROL
LUMBERTON, NC USA

FLANGED TYPE
WYE STRAINER
MODEL YS64-CS & YS64-SS

RATING:
ANSI #
600.



BILL OF MATERIALS:

No.	Name	YS64-CS	YS64-SS
		Carbon Steel	Stainless Steel
1	Body	ASTM A216 WCB	ASTM A351 CF8M
2	Cover	ASTM A216 WCB	ASTM A351 CF8M
3	Screen*	SS 304	SS 304
4	Gasket*	SS304 Spiral Wound	SS304 Spiral Wound
5	Studs	ASTM A193-B7	ASTM A193 B8 T316SS
6	Nuts	ASTM A194-2H	ASTM A194 Gr8 T316SS
7	Plug	ASTM A105	ASTM A182 F316

* Recommended spare parts
Gasket is encapsulated in the groove

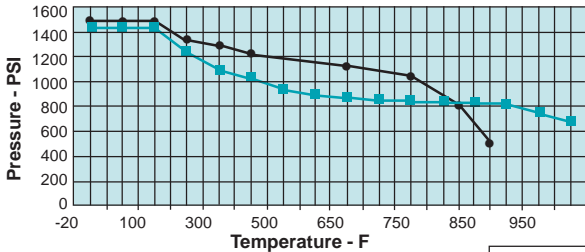
NOTE:

1. A wide range of optional gasket material available, C/F
2. Strainers are also available in many optional materials such as LCC, LCB, WC6, WC9, 316L, Alloy 20, and monel.
3. Flange Finish 125-250 AARH

DIMENSIONS: (YS64)

SIZE:	In mm	1/2	3/4	1	1-1/4	1-1/2	2	2-1/2	3	3-1/2	4	5	6	8	10	12
		A	In mm	6-5/8 168	8-5/16 211	8-5/16 211	10-1/8 257	10-1/4 260	11 279	12 305	13-1/2 343	14-3/4 375	17-15/16 456	22-1/4 565	25-5/8 651	31-3/4 806
B	In. mm.	3-1/2 89	3-3/4 95	3-3/4 95	5-1/2 140	5-1/2 140	7 178	8-1/4 210	9-1/4 235	10-3/8 264	12-1/2 318	15 381	20 508	24 610	28-1/2 724	34-1/2 876
C SCREEN REMOVAL	In mm	5 130	5 130	5 130	8 203	8 203	10 254	12-1/2 317.5	14-1/2 368	14-7/8 378	19-1/2 495	23 584	31 787	38-1/2 978	45-1/2 1156	52 1321
D (NPT) BLOW OFF	In. mm.	3/8 10	1/2 15	1/2 15	1/2 15	1/2 15	1/2 15	1 25	1 25	1-1/4 32	1-1/2 40	2 50	2 50	2 50	2 50	2 50
WEIGHT:	lb. kg.	6 2.7	12.25 5.5	12.25 5.5	19 8.6	27 12	40 18	60 27	78 35	125 56	160 72.7	254 115	364 165	670 304	1090 495	1558 708

Pressure Vs Temperature
YS64 CS & YS64 SS ANSI 600 lbs.



- CS not recommended for prolonged use above 800°F
- SS not recommended for prolonged use above 1000°F

Standard Screen Selections:

Sizes	Liquid	Open Area	Steam	Open Area
1/2" to 4"	0.062 (1/16)	37%	0.033(1/32)	28%
5" to 12"	0.125 (1/8)	40%	0.045 (3/64)	36%

A wide range of optional wire mesh and perforated screens are available. C/F

WORKING PRESSURES-NON SHOCK

MODELS	PRESSURE	TEMPERATURE
YS64-CS	1480 PSI	100°F
	600PSI	838°F
YS64-SS	1440 PSI	100°F
	600 PSI	1125°F

TESTING:

All strainers are individually, hydrostatically tested in accordance with ANSI test specifications.

Ordering Code _____
 Size _____
 Customer/Project _____
 Inq./P.O. No. _____
 Titan Order No. _____
 Certified Correct By _____ Date _____



TITAN FLOW CONTROL, INC.

WYE STRAINER
YS64-CS & YS64-SS

Series	Size	Part No.	Material Trim Code	Drawing No.
				YS64 CS / SS