

Heavy Duty Control Valve 940 Series



940B w/positioner pictured

Diaphragm Actuated
14" & 17" Actuator Sizes
Heavy Duty Die Cast Housing and Yoke
1/2" through 8" Valve Sizes

The Trerice Series 940 Pneumatic Control Valve offers extreme quality and maximum valve performance. The Series 940 is available in a variety of 2-way and 3-way valve styles for industrial, demanding HVAC and commercial process applications. The 940 Actuator can be furnished with a 14" or 17" diaphragm and includes a rugged, die cast aluminum diaphragm chamber.

For optimal performance, the service conditions (medium, flow, temperature, inlet and outlet pressures) of the application must be considered when selecting a valve. Please refer to the Valve Selection Section of this catalog. Consult the Valve Selection tables for the capabilities of a particular valve/actuator assembly. A positioner may be required to maximize the shut-off capability of the valve. Improper application may cause failure of the valve, resulting in possible personal injury or property damage.

Specifications

Actuator Number 940B 940C	Diaphragm Size 14" 17"	Approximate Shipping Weight 45 lbs [20 kg] 86 lbs [39 kg]	Construction Aluminum yoke and diaphragm chamber, acrylic enamel finish Pressure Plate Aluminum Diaphragm Material Nylon reinforced Buna-N Air Pressure to Diaphragm 30 psig maximum	Air Pressure Connection 1/4 NPT Female Operating Temperature Ambient: -40°F (-40°C) to 180°F (82°C) Process Flow: -40°F (-40°C) to 400°F (204°C)
--	-------------------------------------	--	---	--

How to Order

Sample Order Number: 940B-K84-760P

940B

K84

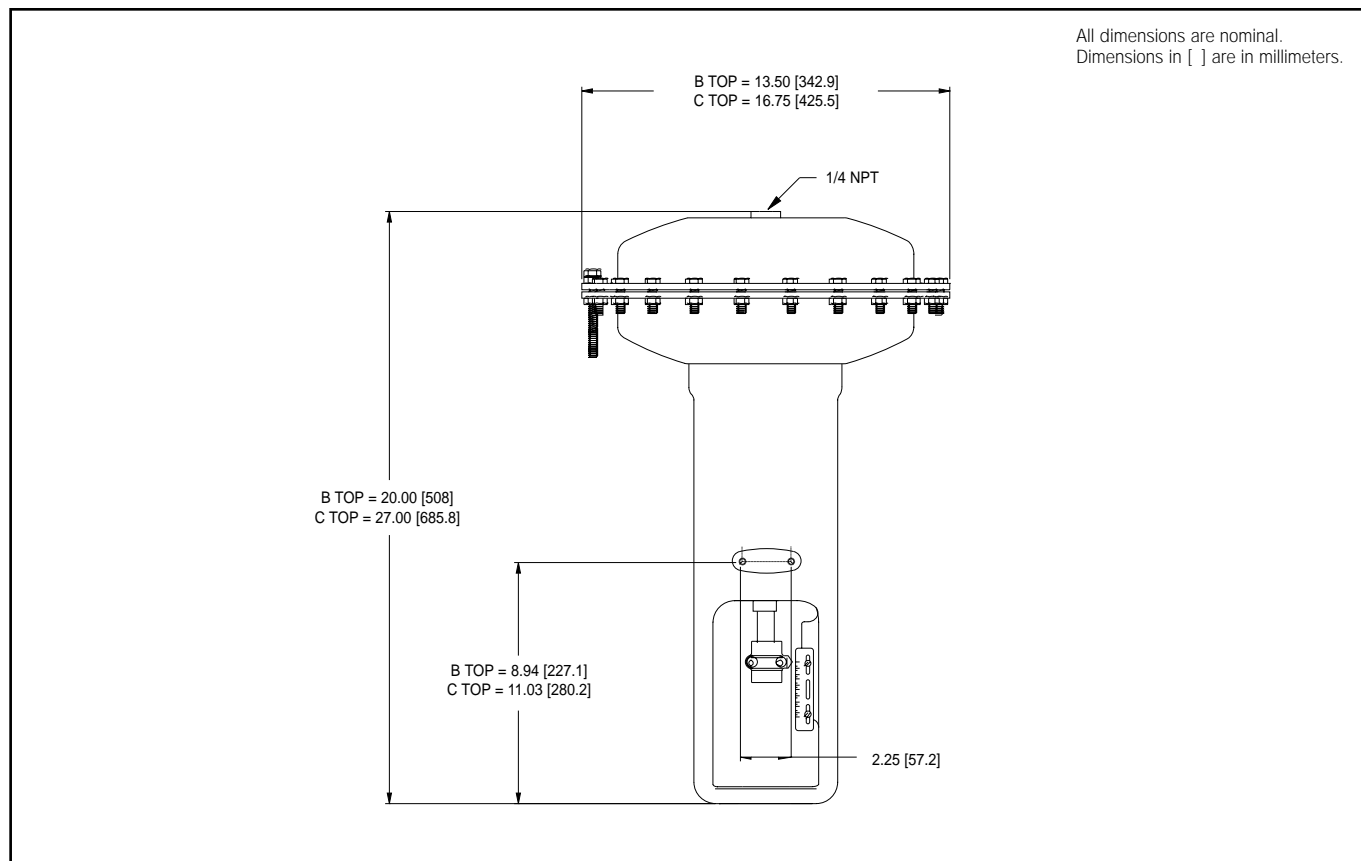
760P

Actuator Number	–	Valve Number	–	Positioner Number
See above		See Valves for 940 Series (pages 91-97)		760P Pneumatic 760E Electropneumatic Omit if None

1. **Determine** the valve size, style and material required by the application.
2. **Consult** the Valve Selection table to determine the required Valve Number.
3. **Refer** to the maximum shut-off pressure columns to determine the Actuator (with or without positioner) needed to provide the shut-off pressure required by your application.
4. **Specify** the Actuator Number.
5. **Specify** the Valve Number.
6. **Specify** the Positioner Number (if required).



Heavy Duty Control Valve 940 Series



Positioner Specifications

Models

760P (Pneumatic)
760E (Electropneumatic)

Action

Direct

Input Signal Ranges

760P: 3 to 15 psig
760E: 4 to 20 mA

Air Requirements

Clean, oil-free, dry air
Maximum Supply Pressure:
30 psig
Air Consumption:
0.28 SCFH (760P),
0.38 SCFH (760E), typical
Flow Rate: 9.0 SCFM

Connections

Pneumatic: 1/4 NPT
Gauge: 1/8 NPT
Electrical: 3/4 NPT
Exhaust: 1/4 NPT

Enclosure

NEMA 4X, IP65

Ambient Temperature

-40°F (-40°C) to 185°F (85°C)

Weight

10 lbs [4.55 kg]

The Trerice No. TA987 Air Filter/Regulator is recommended for filtering and regulating the pressure of plant compressed air and delivering clean, dry air at the proper pressure to pneumatic control devices.