

# Electric Motor Control Valve 940E Series



940E30 pictured

Fail Open or Closed  
Cast Aluminum or Iron Linkages  
1/2" through 8" Valve Sizes

The Terrice Series 940E Control Valve uses an AC power supply to stroke the valve via an actuator drive, electric motor, and valve linkage unit. The actuator drive causes the motor to drive the valve stem up or down in relation to an input signal (factory set at 4-20 mA, field switchable to 0-10 Vdc) from a controller. Electric motors are available to accept a power supply of 24 or 120 Vac and can be specified for failure in an open, closed, or last position upon loss of power. Linkages are available in two sizes (30 and 52), the larger of which uses leverage to provide increased shut-off capabilities on smaller valves and is required for use on larger sized valves.

For optimal performance, the service conditions (medium, flow, temperature, inlet and outlet pressures) of the application must be considered when selecting a valve. Please refer to the Valve Selection Section of this catalog. Consult the Valve Selection tables for the capabilities of a particular valve/actuator assembly. Improper application may cause failure of the valve, resulting in possible personal injury or property damage.

## Specifications

<b>Model</b> 940E  <b>Linkages</b> 30, 52  <b>Motor Case</b> Aluminum  <b>Yoke</b> Linkage 30: Aluminum Linkage 52: Cast-Iron	<b>Power Supply</b> 24Vac, 60Hz, 2.5A or 120Vac, 60Hz, 0.5A  <b>Input Signal</b> 4-20 mA or 0-10 Vdc  <b>Fail Position</b> Stem-Out (open), Stem-In (closed), or Last Position	<b>No-Load Timing</b> Fail Stem-In or Stem-Out: 90 seconds  Fail Last Position: 120 seconds  <b>Protection</b> NEMA 1 (indoor only)  <b>Maximum Temperature</b> Ambient: 130°F (54°C) Process Flow: 400°F (204°C)	<b>Humidity</b> Maximum: 95% RH  <b>Approximate Shipping Weight</b> <b>Actuator -</b> Linkage 30: 15 lbs [6.8 kg] Linkage 52: 30 lbs [13 kg]  <b>Valve -</b> see Valve Selection tables
--	--	---	--

## How to Order

Sample Order Number: 940E30-J36-27

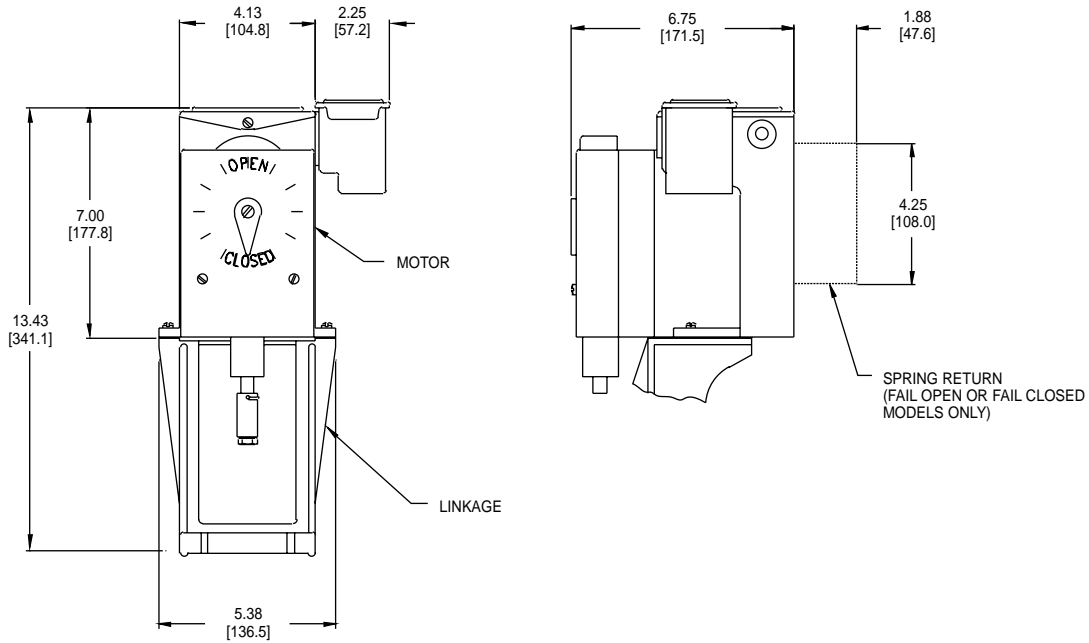
Model	Linkage Size	–	Valve Number	–	Power Supply	Fail Position
940E	30		See Valves for 940E Series (pages 101-107)		1 120Vac/60Hz/2.5A 2 24Vac/60Hz/0.5A	6 Stem-Out (open) 7 Stem-In (closed) 8 Last Position

1. **Determine** the valve size, style and material required by the application.
2. **Consult** the Valve Selection table to determine the required Valve Number.
3. **Refer** to the maximum shut-off pressure columns to determine the Linkage Size needed to provide the shut-off pressure required by your application.
4. **Specify** the Model and Linkage Size.
5. **Specify** the Valve Number.
6. **Specify** the Power Supply and Fail Position codes.

# Electric Motor Control Valve 940E Series

All dimensions are nominal.  
Dimensions in [ ] are in millimeters.

## Linkage Size 30



## Linkage Size 52

