

SANITARY DIRECT MOUNT BALL VALVES

3-PC SANITARY BALL VALVES

TRU-FLO

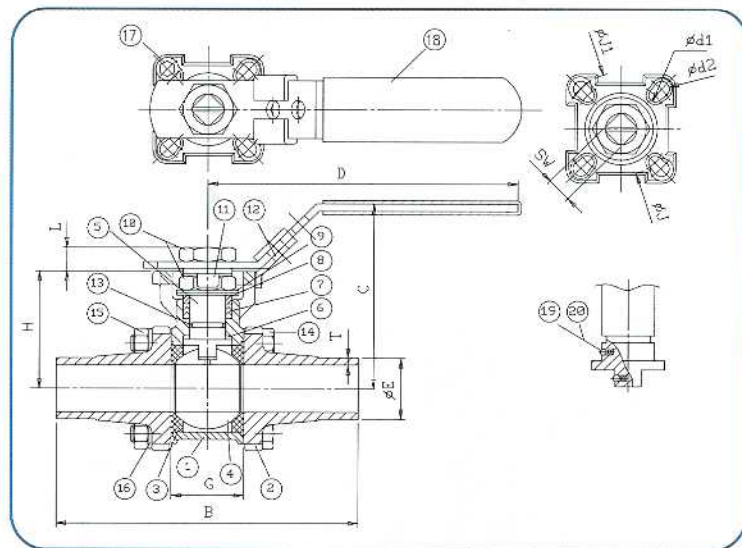
EA - 33NF - EXT



FEATURES/SPECIFICATIONS:

- Investment Cast 316 stainless steel
- 3-pc split body design facilitates inspection and easy inline repair
- Full port flow to tube I.D./O.D. for sanitary applications
- Highly polished I.D. 8-12 Ra finish for use in food and pharmaceutical applications
- Live loaded, self-adjusting stem packing and Belleville washers provide better sealing, additional defense against leaking, lower operating torque and reduces routine maintenance costs
- Meets FDA & USDA requirements when used with body cavity fillers
- 3-Pc, V-ring stem packing for better sealing and lower torque
- Extend Tube butt-weld ends allow easy inline welding without disassembly of valve and are suitable for orbital welding
- Blow out proof, bottom entry stem design and anti-static device
- For high cycle applications-working pressure to 1000 psi W.O.G.
- Regular and Cavity Filled designs available
- Sizes 1/2" - 2" in 316L Extend Tube Design
2.5" - 4" Available in Short Butt-Weld Design

Item	Part Name	Material	Qty
1	body	CF8M/316	1
2	end caps	CF8M/316	2
3	seats	PTFE	2
4	ball	SUS 316	1
5	stem	SUS 316	1
6	body seal	PTFE	2
7	gasket	PTFE	1
8	seal	PTFE	1
9	Gland ring	SUS 304	2
10	belleville spring washer	SUS 301	2
11	lever nut	SUS 304	1
12	locking tab	SUS 304	1
13	handle	SUS 304	1
14	O ring	VITON®	1
15	bolts	SUS 304	4
16	bolts nut	SUS 304	4
17	spring washer	SUS 304	4
18	stop screw	SUS 304	1
19	plastic coating	PVC	1
20	static device	SUS 316	2
21	spring	SUS 316	2



Size	A	B	C	D	E	G	H	L	J	J1	d1	d2	SW	T
1/2"	9.5	152.4	70.9	110	12.8	25.2	42.3	8	36	42	6	6	9	1.65
3/4"	15.9	152.4	73.4	110	19.2	27.7	44.8	8	36	42	6	6	9	1.65
1"	22.1	165.1	84.1	135	25.4	33	54	10	42	50	6	7	11	1.65
1 1/2"	34.8	203.2	109.5	165	38.1	49.3	73.5	14.8	50	70	7	9	14	1.65
2"	47.5	215.9	118.9	165	50.8	63.6	82.9	14.8	50	70	7	9	14	1.65

EA - 33NF - EXT