

VAAS™ | Valves with the Leading Edge

Model 760 Bi-directional Gate Valve

Slurry-Max is a gate valve designed to suit the toughest applications in a variety of industries handling abrasive, erosive slurry media. This valve was developed by VAAS using our experience and expertise in manufacturing and supplying knife gate valves, to meet demanding requirements world wide.

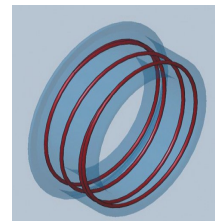
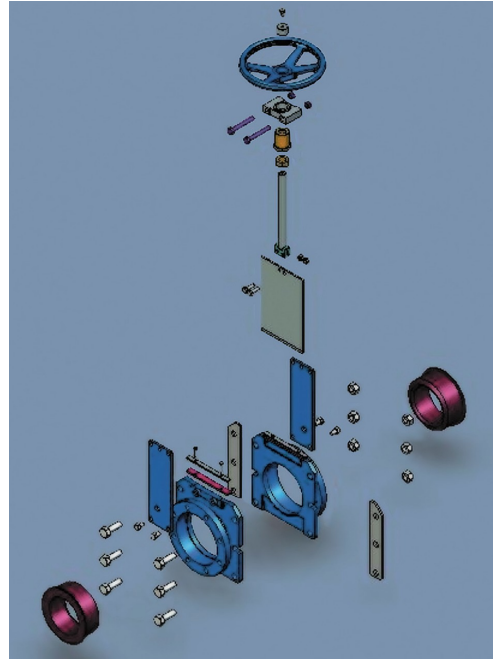
PRODUCT HIGHLIGHTS

- Dual, embedded spring steel reinforced, elastomer sleeves providing dynamically corrected sealing for ZERO leak
- Cavity-free flow path offering minimum pressure drop
- Packing-less design
- Body fully isolated from media except during the short duration of opening/closing of the valve
- Can handle dry and wet media and also wide particle size media
- In-line maintenance feasibility for changing sleeves or gate

TYPICAL APPLICATIONS

- Handling tough slurries found in mining, power plants, cement, phosphoric acid and other industries
- Can be used in some cementing slurries normally not handled by other valves
- Dry-powder isolation in pneumatic conveying systems requiring tight shut-off; vacuum conveying systems

Exploded view showing constructional details of VAAS Slurry-Max



Specifications

Type	Through-going gate valve
Size Range	2" to 24" (higher sizes on application)
Pressure rating	CWP-100psi; higher ratings on request
End style	Flanged
Face-to-face	VAAS Standard; meets dimensions of some international designs for easy replacement
Drilling	ANSI 150lb standard; others on request
Body	Cast iron, ductile iron, steel, stainless steel options
Seat	Replaceable, spring-reinforced elastomer sleeves; natural rubber as standard; max. service temp – 176F. Other materials on request
Gate	304/316 stainless steel plated is standard; others on request
Stem	304 stainless steel standard; others on request
Superstructure	Steel, epoxy painted standard; others on request
Drain cover	Optional – provided at bottom
Actuator options	Direct mounted rising stem hand wheel/rear hand wheel standard; non-rising hand wheel, chain wheel, pneumatic cylinder, hydraulic and electric actuator options available
Accessories & Options	Various accessories and special construction options are available for this model.

Test Specifications

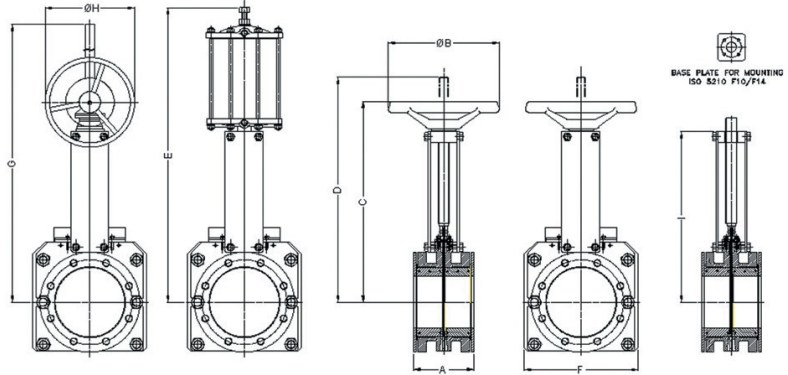
Body shell test Tested at 1.5 times CWP
 Seat test Tested at 1.1 times CWP for zero leak in either direction

Painting

Standard paint is two-pack epoxy in blue color (other paint options available on request)

Dimensions (inches)

Size	A	B	C	D	E	F	G	H	I
2"	6.9	10	12	15	18	8	N/A	N/A	N/A
3"	6.9	10	15	21	22	9	N/A	N/A	N/A
4"	6.9	10	16	22	23	11	N/A	N/A	N/A
6"	7	12	22	32	33	13	36	20	N/A
8"	7.25	12	24	34	37	16	40	20	N/A
10"	8.9	12	28	40	43	17	44	20	N/A
12"	10.12	N/A	N/A	N/A	52	21	48	20	30
14"	10.12	N/A	N/A	N/A	56	23	54	20	35
16"	11	N/A	N/A	N/A	61	25	57	20	38
18"	12.25	N/A	N/A	N/A	68	27	67	20	42
20"	14.13	N/A	N/A	N/A	76	29	72	20	48
24"	14.65	N/A	N/A	N/A	89	34	87	20	53



Dimensions given above are indicative. Please request certified drawings for piping layout

Actuator Selection

Size	2"	3"	4"	6"	8"	10"	12"	14"	16"	18"	20"	24"
Gear Handw heel	N/A	N/A	N/A	N/A	N/A	CEG01	CEG01	CEG01	CEG02	CEG02	CEG02	CEG03
Pneumatic DA cylinder	RCGC4	RCGC4	RCGC6	RCGC6	RCGC8	RCGC10	RCGC10	RCGC12	RCGC12	RCGC16	RCGC16	RCGC20

Optional Construction

Valves can also be supplied with bought-out-electric or hydraulic actuators as required

Ordering

Please contact VAAS Americas for complete ordering information .

Available At:



Bay Port Valve & Fitting, Inc.

P.O. Box 315 Phone: (863) 425-0023
 2295 S.R. 37 South (800) 369-0194
 Mulberry, FL. 33860 Fax: (863) 425-5091

www.bayportvalve.com

* All statements, technical information, and recommendations in this bulletin are for general use only. Consult VAAS representative or factory for the specific requirements and material selection for your intended application. The right to change or modify product design or product without prior notice is reserved.

VAASTM | Valves with the Leading Edge

The Model 760 is a Bi-directional gate valve available in sizes 2"-24" the *Slurry-Max* is designed to suit the toughest applications in a variety of industries handling abrasive, erosive slurry media. This valve was developed by VAAS using our experience and expertise in manufacturing and supplying knife gate valves, to meet demanding requirements worldwide.

The features and benefits of the Model 760

- Interchangeability of actuation (Quick Change Design); The quick change design of the yoke and actuator is as simple as removing 3 to 4 bolts, depending on the valve size, and swapping the actuator. This ease and flexibility of this feature reduces inventory cost in plant store rooms.
- Floating clevis to gate connection; allows the gate to travel along the center line of the valve body and is not hindered by the travel of the actuator.
- Cast Yokes standard.
- Dual, embedded spring steel reinforced, elastomer sleeves providing dynamically corrected sealing for ZERO leak
- Cavity-free flow path offering minimum pressure drop
- Packing-less design
- Body fully isolated from media except during the short duration of opening/closing of the valve
- Can handle dry and wet media and also wide particle size media
- In-line maintenance feasibility for changing sleeves or gate

Typical Applications;

- Handling tough slurries found in mining, power plants, cement, phosphoric acid and other industries
- Can be used in some cementing slurries normally not handled by other valves
- Dry-powder isolation in pneumatic conveying systems requiring tight shut-off; vacuum conveying systems