

90 Series Panel Mounted



CRN

Screw-on Lens &
Recalibrator Screw

Description

Winters 90 Series Panel Mounted pressure gauge is a versatile instrument that has a u-clamp design that can be panel mounted on instrumentation panels, boards and any other industrial applications. This pressure gauge comes standard with a screw-on plastic ring, acrylic lens and a recalibrator screw. The instrument is equipped with a flutterless movement and is easy to service.

The Winters 90 Series Panel Mounted gauge is designed for applications such as air, oil, water and other pressure media which has no effect on bronze.

Specifications

| | |
|-----------------------------|---|
| Dial: | 1 1/2" (40mm), 2" (50mm), 2 1/2" (63mm) and 3 1/2" (90mm), white aluminum with black and red markings |
| Case: | Steel painted black |
| Lens: | Polycarbonate |
| Ring: | Screw on plastic ring |
| Pointer: | Steel, painted black |
| Socket: | Brass |
| Connection: | 1/8" NPT or 1/4" NPT standard |
| Bourdon Tube: | Phosphor Bronze |
| Movement: | Brass (flutterless movement) |
| Welding: | Silver alloy |
| Over-pressure Limit: | 25% of full scale value |
| Working Pressure: | Maximum 75% of full scale value |
| Ambient Temperature: | -40°F to 150°F (-40°C to 65°C) |
| Process Temperature: | -40°F to 150°F (-40°C to 65°C) |
| Accuracy: | 2-1-2% accuracy (ANSI/ASME Grade B) - recalibrator screw std. |
| Protection: | IP52 |



Corporate Office: 121 Railside Road • Toronto • ON • M3A 1B2 • (416) 444-2345 • Fax: (416) 444-8979

U.S.A. Office: 600 Ensminger Road • Buffalo • NY • 14150 • (716) 874-8700 • Fax: (716) 874-8800

www.winters.com • 1-800-WINTERS (946-8377)

90 Series Panel Mounted

How to order: Specify product code

PRODUCT CODES

| Dial Size | 1 1/2" (40mm) | 2" (50mm) | 2" (50mm) | 2 1/2" (63mm) | 3 1/2" (90mm) |
|------------------------|----------------|----------------|----------------|----------------|----------------|
| Case Material | Steel | Steel | Steel | Steel | Steel |
| Connection | Centre Back | Centre Back | Centre Back | Centre Back | Centre Back |
| NPT Connection Size | 1/8" | 1/8" | 1/4" | 1/4" | 1/4" |
| Movement, Socket, Tube | Brass | Brass | Brass | Brass | Brass |
| 30" Hg. Vac./kPa | Q901397UC | Q901424UC | Q901428UC | Q901431UC | Q901455UC |
| 30"-0-15 psi/kPa | * | * | * | * | * |
| 30"-0-30 psi/kPa | * | * | * | * | * |
| 30"-0-60 psi/kPa | * | * | * | * | * |
| 30"-0-100 psi/kPa | * | * | * | * | * |
| 0-15 psi/kPa | Q901399UC | Q901425UC | Q901429UC | Q901436UC | Q901464UC |
| 0-30 psi/kPa | Q901400UC | Q901402UC | Q901403UC | Q901437UC | Q901456UC |
| 0-60 psi/kPa | Q901401UC | Q901404UC | Q901405UC | Q901438UC | Q901457UC |
| 0-100 psi/kPa | Q901420UC | Q901406UC | Q901407UC | Q901439UC | Q901458UC |
| 0-160 psi/kPa | Q901421UC | Q901408UC | Q901409UC | Q901440UC | Q901459UC |
| 0-200 psi/kPa | Q901422UC | Q901426UC | Q901410UC | Q901441UC | Q901460UC |
| 0-300 psi/kPa | Q901423UC | Q901427UC | Q901411UC | Q901442UC | Q901461UC |
| 0-400 psi/kPa | Q901443UC | Q901445UC | Q901447UC | Q901453UC | Q901462UC |
| 0-600 psi/kPa | Q901444UC | Q901446UC | Q901448UC | Q901454UC | Q901463UC |
| Panel Cut-out | 1.69" (43mm) | 2.11" (53.5mm) | 2.11" (53.5mm) | 2.66" (67.5mm) | 3.68" (93.5mm) |
| Overall O.D. | 1.85" (47.7mm) | 2.27" (57.9mm) | 2.27" (57.9mm) | 2.82" (71.9mm) | 3.94" (98.9mm) |

Options: • Other ranges, connections sizes available



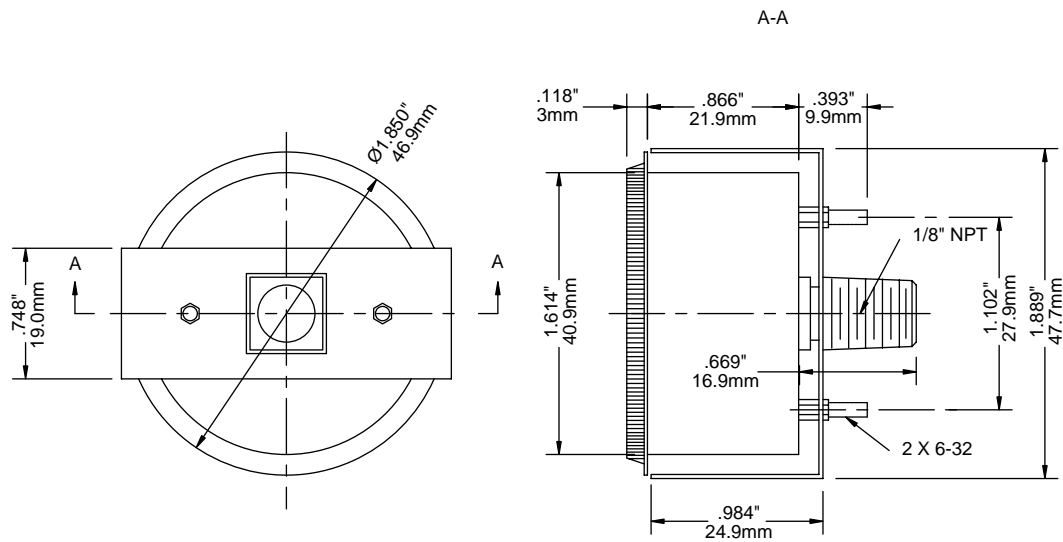
Corporate Office: 121 Railside Road • Toronto • ON • M3A 1B2 • (416) 444-2345 • Fax: (416) 444-8979

U.S.A. Office: 600 Ensminger Road • Buffalo • NY • 14150 • (716) 874-8700 • Fax: (716) 874-8800

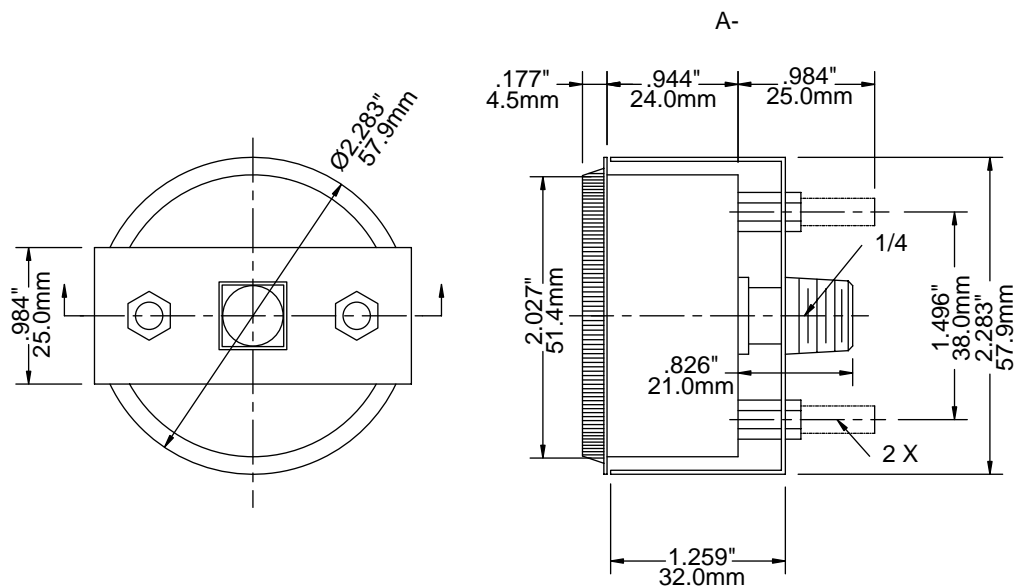
www.winters.com • 1-800-WINTERS (946-8377)

90 Series Panel Mounted

1.5" Back Connection, u-clamp



2" Back Connection, u-clamp



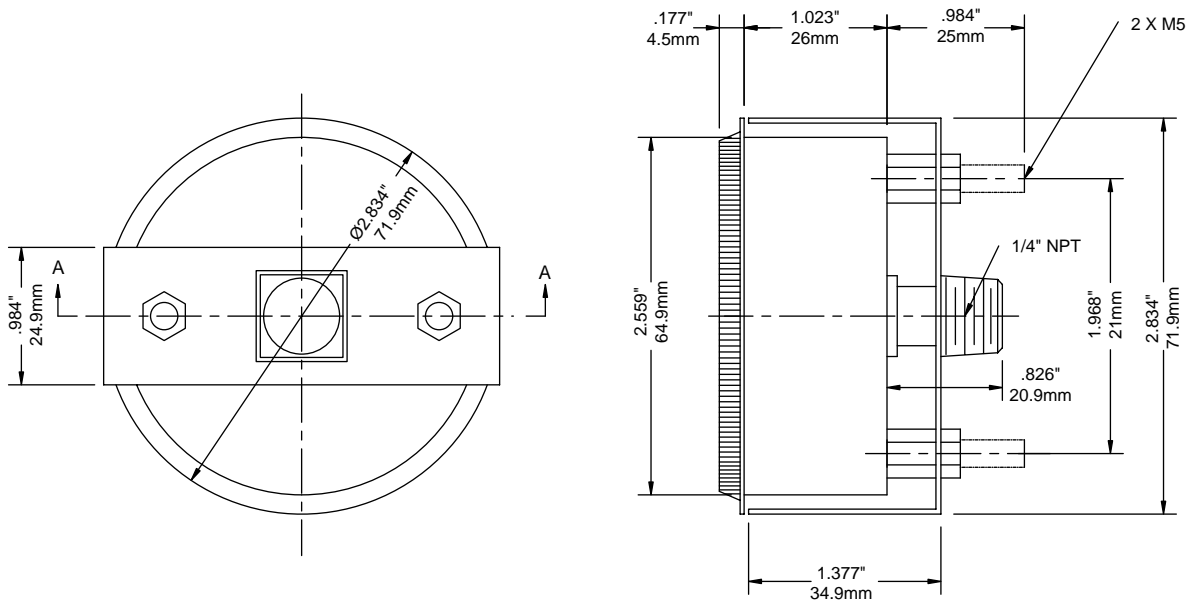
Corporate Office: 121 Railside Road • Toronto, ON, M3A 1B2 • 416-444-2345 • Fax: 416 444 8979

U.S.A. Office: 600 Ensminger Road • Buffalo, NY, 14150 • 716 874 8700 • Fax: 716-874-8800

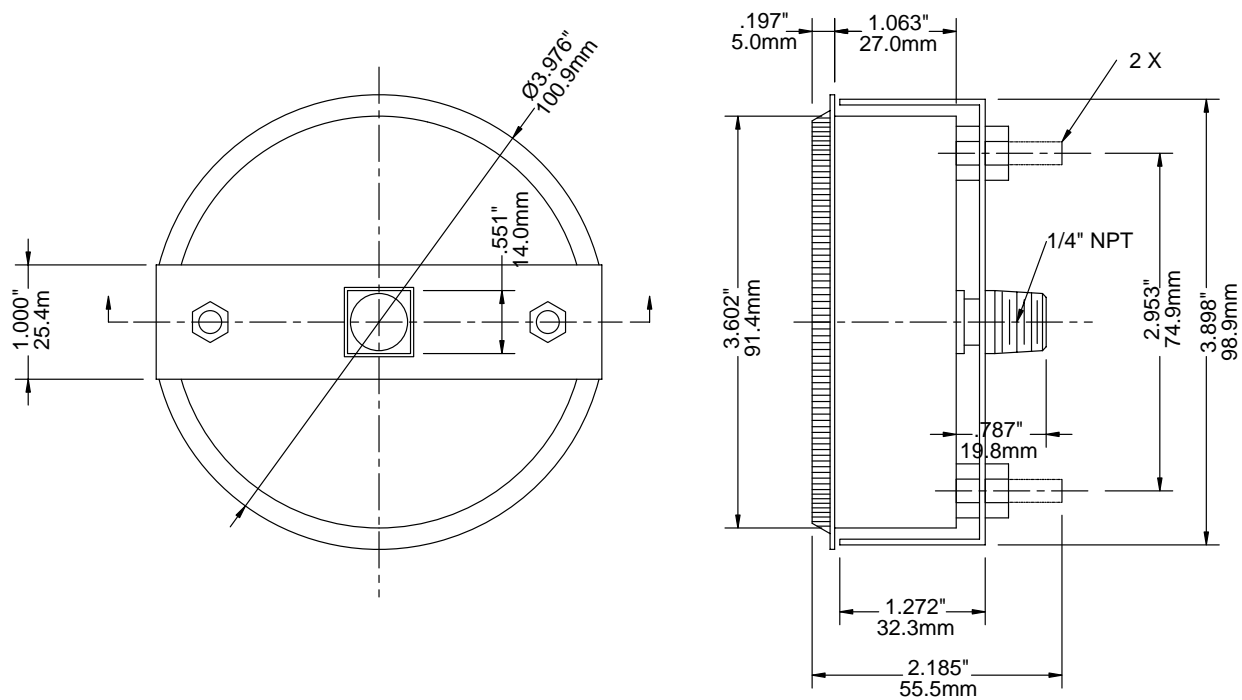
www.winters.com • 1-800-WINTERS (946-8377)

90 Series Panel Mounted

2.5" Back Connection, u-clamp



3.5" Back Connection, u-clamp



Corporate Office: 121 Railside Road • Toronto • ON • M3A 1B2 • (416) 444-2345 • Fax: (416) 444-8979

U.S.A. Office: 600 Ensminger Road • Buffalo • NY • 14150 • (716) 874-8700 • Fax: (716) 874-8800

www.winters.com • 1-800-WINTERS (946-8377)