

#70 NACE Diaphragm Seals

30" Vac to 2500 psi (-100 to 15,850 kPa)

NACE MR0175-2003



Applications

Winters #70 NACE Diaphragm Seals can be used on applications requiring a NACE compliant MR0175-2003 diaphragm seal.

Options

- SF-D = Silicone fill (seal only)
- FL-D = Fluorolube fill (seal only)

Specifications	
Upper Housing:	Hastelloy C
Diaphragm/ Wetted Parts:	Hastelloy C, welded
Minimum Operating Pressure:	30" Hg Vacuum (-100kPa)
Maximum Operating Pressure:	2,500 psi (17,250 kPa)
Gauge Connection:	1/4" NPT, 1/2" NPT standard
Process Connection:	1/4" NPT, 1/2" NPT, 3/4" NPT and 1" NPT are standard
Flushing Connection:	1/8" NPT, 1/4" NPT available
Nuts and Bolts:	Hastelloy C
Process Temperature:	-49°F to 302°F (-45°C to 150°C)

Product Codes	
Upper Housing (Top)	
Hast. C, 1/4" NPT conn., Hastelloy C diaphragm	DN966HASC75
Hast. C, 1/2" NPT conn., Hastelloy C diaphragm	DN967HASC75
Lower Housing (Bottom)	
Hastelloy C, 1/4" NPT conn.	DN954HASC75
Hastelloy C, 1/2" NPT conn.	DN956HASC75
Hastelloy C, 1/2" NPT conn. with flushing	DN957HASC75
Hastelloy C, 3/4" NPT conn. with flushing	DN959HASC75
Hastelloy C, 3/4" NPT conn.	DN963HASC75
Hastelloy C, 1" NPT conn.	DN964HASC75
Hastelloy C, 1" NPT conn. with flushing	DN965HASC75



Corporate Office: 121 Railside Road • Toronto • ON • M3A 1B2 • (416) 444-2345 • Fax: (416) 444-8979

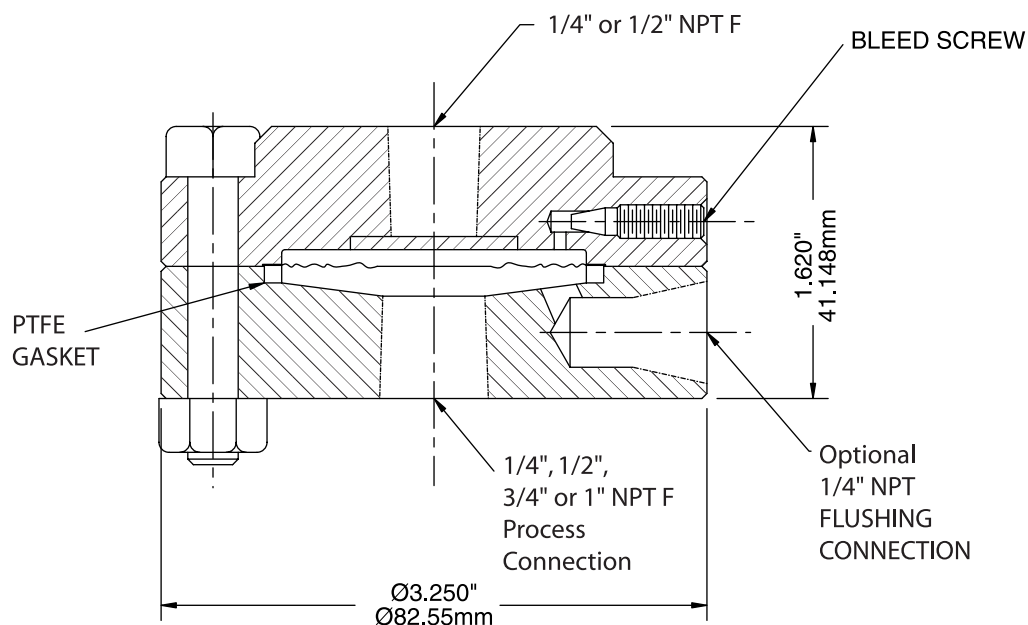
U.S.A. Office: 600 Ensminger Road • Buffalo • NY • 14150 • (716) 874-8700 • Fax: (716) 874-8800

www.winters.com • 1-800-WINTERS (946-8377)

#70 NACE Diaphragm Seals

30" Vac to 2500 psi (-100 to 15,850 kPa)

NACE MR0175-2003



Corporate Office: 121 Railside Road • Toronto • ON • M3A 1B2 • (416) 444-2345 • Fax: (416) 444-8979

U.S.A. Office: 600 Ensminger Road • Buffalo • NY • 14150 • (716) 874-8700 • Fax: (716) 874-8800

www.winters.com • 1-800-WINTERS (946-8377)

04/04