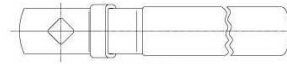




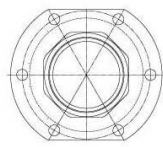
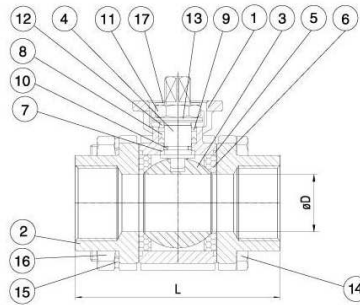
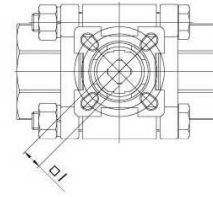
# 3-PC 2000/1500 WOG STAINLESS STEEL BALL VALVE, WITH ISO5211 MOUNTING PAD, FULL BORE, SCREWED END

1/4"~2" 2000 WOG      2-1/2"~4" 1500 WOG

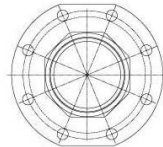
**MODEL: #5313**



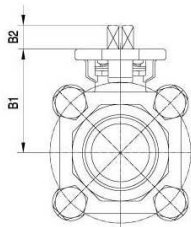
HANDLE



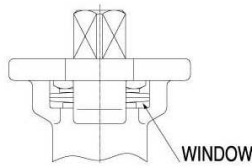
\* 2"



\* 2 1/2"-4"

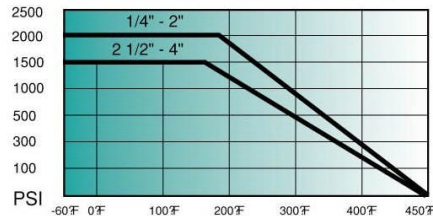


\* 1/4"-1 1/2"



WINDOW

### PRESSURE / TEMP. RATINGS



### MATERIAL LIST

NO.	PART NAME	SPECIFICATION	QTY
1	BODY	CF8M WCB	1
2	END CAP	CF8M WCB	2
3	BALL	SUS316	1
4	STEM	SUS316	1
5	JOINT GASKET	R.PTFE	2
6	SEAT	R.PTFE	2
7	STEM SEAL	R.PTFE	1
8	V-RING PACKING	PTFE	1 SET
9	BUSHING	50% S.S. POWER FILLED PTFE	1
10	O-RING	VITON	1
11	STEM NUT	SUS304	1
12	GLAND	SUS304	1
13	BELLEVILLE WASHER	SUS301	2
14	BOLT	SUS304	*
15	WASHER	SUS304	*
16	BOLT NUT	SUS304	*
17	LOCK SADDLE	SUS304	1

### DIMENSIONS

(inch)

SIZE	B1	B2	øD	□I	L	TORQUE INCH/LBS	ISO5211	LBS
1/4"	1.59	0.35	0.46	0.35	2.55	31	F03 F04	1.79
3/8"	1.59	0.35	0.49	0.35	2.55	31	F03 F04	1.79
1/2"	1.59	0.35	0.59	0.35	2.85	31	F03 F04	1.90
3/4"	1.72	0.35	0.79	0.35	3.36	35	F03 F04	2.45
1"	2.05	0.43	0.98	0.43	4.15	53	F04 F05	4.52
1-1/4"	2.24	0.43	1.26	0.43	4.37	142	F04 F05	5.78
1-1/2"	2.59	0.61	1.50	0.55	5.01	204	F05 F07	9.66
2"	2.92	0.61	1.97	0.55	5.62	274	F05 F07	15.48
2 1/2"	3.72	0.65	2.56	0.67	7.28	540	F07 F10	28.66
3"	4.07	0.65	3.15	0.67	8.07	646	F07 F10	38.62
4"	5.18	0.85	3.94	0.87	9.45	867	F10	84.48