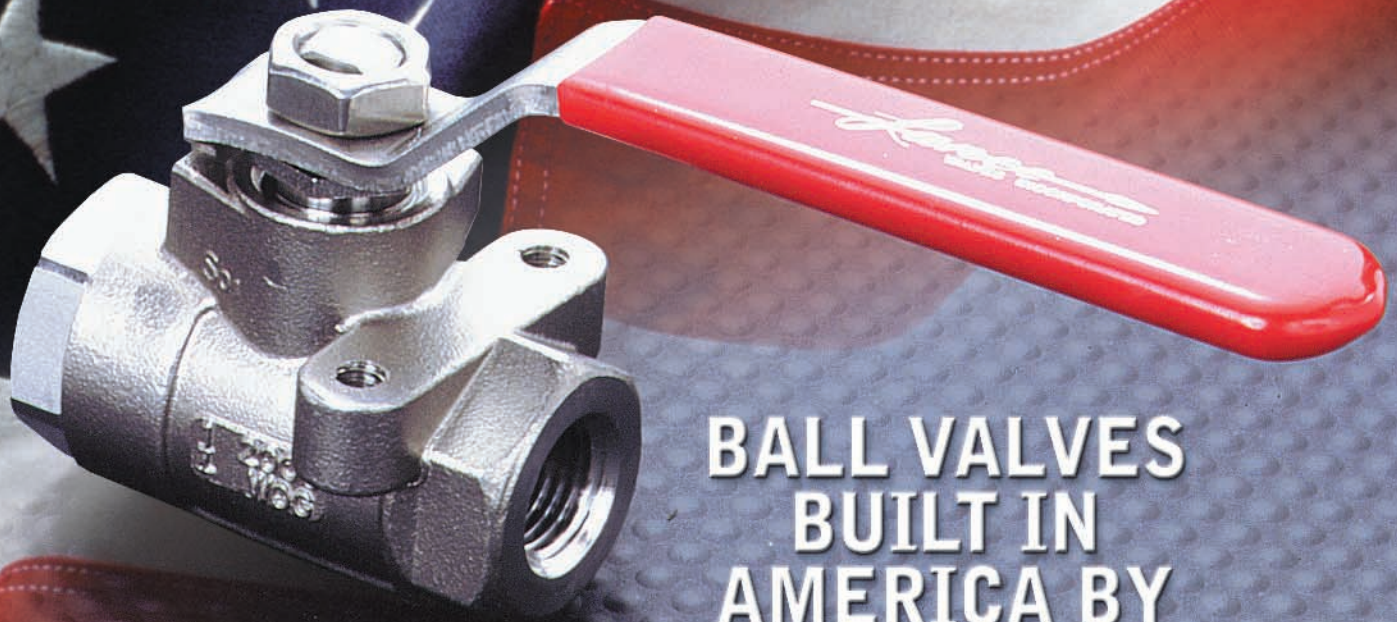


# BALL VALVES



**BALL VALVES  
BUILT IN  
AMERICA BY  
AMERICANS**

*Larree* Valves  
Division of Advanced Thermal Systems, Inc.

# LANCE VALVES QUALITY – An Open and Shut Case

**Lance Valves, Division of Advanced Thermal Systems, Inc. has the objective to perform all activities with total dedication to quality.** The term quality used here includes; the quality of the company's products, services and communications to the various audiences dealt with in the course of doing business. Lance Valves quality starts at the engineering stage and continues through production, test and packaging.

The continued success of Lance Valves depends heavily on their ability to mobilize all their capabilities for the benefit of their customers. The importance of satisfying customer needs for high quality service, accurate information, reliable commitments, easy access and flexibility is constantly increasing. Although excellent products and competitive prices are as necessary as ever, they are often insufficient discriminators in today's tough competitive market. A supplier's reputation for delivering high quality, consistent, reliable customer service can be just as important in the buyers decision process as the quality and technology content of the product. Unbeatable service quality along with the promise of a quality product is what gives Lance Valves it's powerful competitive advantage in today's global market.

Our company-wide Quality Program was developed to maintain a level of overall performance and attitude that makes Lance Valves the natural choice of all those affected by the company's activities.

- All Lance Valves are provided with blowout proof stems
- Rugged, simple, time proven design
- Large port to minimize pressure drop
- Two-way flow
- Available in 316 stainless steel, carbon steel and bronze construction
- Carbon steel valves come standard with stainless steel stem and gland nut (optional stainless steel ball is available)
- 100% factory-tested with air under water before they are packaged and shipped

**90% of all standard valves are shipped within 24 hours.**

- Certified high pressure rating for both stainless steel and carbon steel valves
- Perfect sphere ball (brass and carbon steel are hard chrome plated)
- Gland nut adjustable to compensate for wear
- Drip-tight closure with low operating torque
- All standard valves have reinforced Teflon\* (PTFE) seats and seals
- Ultimate in quality at minimum cost
- Other options available (see pages 6,7, and 8)



## LANCE VALVES WARRANTY TERMS

Lance Valves warrants their products to be free from defects in material and workmanship for a period of one (1) year from date of purchase, to the extent that Lance Valves will replace or repair free of charge with all transportation charges for the return of defective goods to Lance Valves and their reshipment to be borne by the Buyer, or at Lance Valves' option a refund of the purchase price. Buyer must give Lance Valves immediate notification in writing upon the discovery of such defect. Lance Valves shall be under no obligation or liability for or in respect to any labor cost or other expense. The foregoing warranty is in lieu of and excludes all other warranties, expressed or implied, by operation of law or otherwise, including particularly, but not exclusively, warranty that any product is suitable for Buyer's particular purposes. Without limitation of the foregoing, the total liability of Lance Valves with respect to any product whether on warranties or otherwise, shall in no event exceed the original purchase price thereof. Lance Valves shall in no event be liable to Buyer or others for any direct, special or consequential or loss of production or loss of profits resulting from any cause whatsoever, including but not limited to defective workmanship on materials or any delay, act, error or omission of Lance Valves.

\* DuPont Reg. Trademark

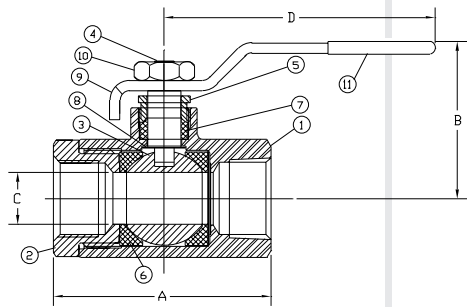
# THREADED – Specifications/Ratings

## BRONZE

600# WOG 1/4" – 2"  
150# WSP

- 1 **BODY** – ASTM B-584 BRONZE
- 2 **END CONNECTOR** – ASTM B-16 BRASS, ASTM B-584 BRONZE
- 3 **BALL** – ASTM B-16 BRASS, CHROME PLATED
- 4 **STEM** – ASTM B-16 BRASS
- 5 **GLAND NUT** – ASTM B-16 BRASS
- 6 **SEATS** – GLASS FILLED TEFLON\*
- 7 **STEM PACKING** – GLASS FILLED TEFLON\*
- 8 **STEM BEARING** – GLASS FILLED TEFLON\*
- 9 **HANDLE** – STEEL, PLATED
- 10 **HANDLE NUT** – STEEL, PLATED
- 11 **HANDLE GRIP** – VINYL
- 12 **MOUNTING PAD** – STANDARD

Conforms to Specification: MSS SP-110



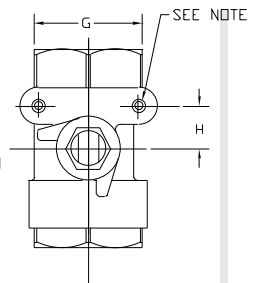
## 316 STAINLESS STEEL

2000# WOG 1/4" – 1"  
1500# WOG 1-1/4" – 2"  
150# WSP

**NOTE:** See page 9 for Temperature/Pressure ratings

- 1 **BODY** – ASTM A-351-74B CF8M STAINLESS
- 2 **END CONNECTOR** – ASTM A-351-74B CF8M AISI T-316 STAINLESS
- 3 **BALL** – AISI T-316 STAINLESS
- 4 **STEM** – AISI T-316 STAINLESS
- 5 **GLAND NUT** – AISI T-316 STAINLESS
- 6 **SEATS** – GLASS FILLED TEFLON\*
- 7 **STEM PACKING** – GLASS FILLED TEFLON\*
- 8 **STEM BEARING** – GLASS FILLED TEFLON\*
- 9 **HANDLE** – AISI 304 STAINLESS
- 10 **HANDLE NUT** – 18-8 STAINLESS
- 11 **HANDLE GRIP** – VINYL
- 12 **MOUNTING PAD** – STANDARD

Conforms to Specifications: MSS SP-110, API 598, API 608, ASME B16.34. Meets NACE Std. MR-01-75



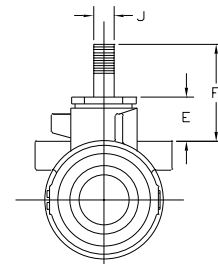
**Note 1:**  
Sizes 1/4" thru 1" are tapped with 10-24 UNC threads  
Sizes 1-1/4" thru 2" are tapped with 1/4"-20 UNC threads

## CARBON STEEL

2000# WOG 1/4" – 1"  
1500# WOG 1-1/4" – 2"  
150# WSP

- 1 **BODY** – ASTM A-216 GRADE WCB CARBON STEEL
- 2 **END CONNECTOR** – ASTM A-216 GRADE WCB CARBON STEEL AISI 12L15 CARBON STEEL
- 3 **BALL** – AISI 12L15 CARBON STEEL, CHROME PLATED
- 4 **STEM** – AISI T-316 STAINLESS
- 5 **GLAND NUT** – AISI T-316 STAINLESS
- 6 **SEATS** – GLASS FILLED TEFLON\*
- 7 **STEM PACKING** – GLASS FILLED TEFLON\*
- 8 **STEM BEARING** – GLASS FILLED TEFLON\*
- 9 **HANDLE** – STEEL, PLATED
- 10 **HANDLE NUT** – STEEL, PLATED
- 11 **HANDLE GRIP** – VINYL
- 12 **MOUNTING PAD** – STANDARD

Conforms to Specifications: MSS SP-110, API 598, API 608, ASME B16.34



Size	Standard Part Numbers			Dimensions (in.)									
	BRONZE	316 STAINLESS	CARBON	A	B	C	D	E	F	G	H	J	Cv
1/4"	21-021	22-021	23-021	2-1/16	1-3/4	.375	3-7/8	.560	.875	1-1/8	1/2	.230	8.4
3/8"	21-031	22-031	23-031	2-1/16	1-3/4	.375	3-7/8	.560	.875	1-1/8	1/2	.230	7.2
1/2"	21-041	22-041	23-041	2-1/4	1-13/16	.500	3-7/8	.560	.875	1-1/8	1/2	.230	15.0
3/4"	21-061	22-061	23-061	3	2-1/8	.688	4-3/4	.660	1.060	1-3/8	7/8	.250	30.0
1"	21-081	22-081	23-081	3-3/8	2-1/4	.875	4-3/4	.660	1.060	1-3/8	7/8	.250	43.0
1-1/4"	21-101	22-101	23-101	4	2-5/8	1.000	5-1/2	.745	1.405	1-1/2	15/16	.385	48.0
1-1/2"	21-121	22-121	23-121	4-3/8	2-7/8	1.250	5-1/2	.730	1.390	1-1/2	15/16	.385	84.0
2"	21-161	22-161	23-161	5-1/2	3-1/16	1.500	5-1/2	.700	1.360	1-1/2	15/16	.385	108.0

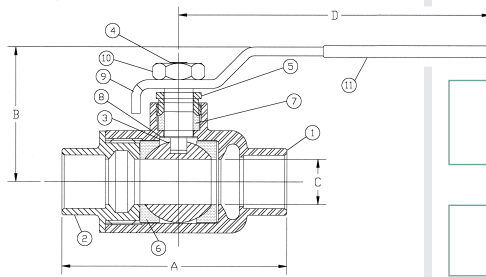
\* DuPont Reg. Trademark

# BRONZE SOLDER\*\*

## BRONZE\*\*

600# WOG 1/4" – 2"  
150# WSP

- 1 **BODY** – ASTM B-584 BRONZE
- 2 **END CONNECTOR** – ASTM B-16 BRASS, ASTM B-584 BRONZE
- 3 **BALL** – ASTM B-16 BRASS, CHROME PLATED
- 4 **STEM** – ASTM B-16 BRASS
- 5 **GLAND NUT** – ASTM B-16 BRASS
- 6 **SEATS** – GLASS FILLED TEFLON\*
- 7 **STEM PACKING** – GLASS FILLED TEFLON\*
- 8 **STEM BEARING** – GLASS FILLED TEFLON\*
- 9 **HANDLE** – STEEL, PLATED
- 10 **HANDLE NUT** – STEEL, PLATED
- 11 **HANDLE GRIP** – VINYL



**NOTE:** See page 9 for Temperature/ Pressure ratings

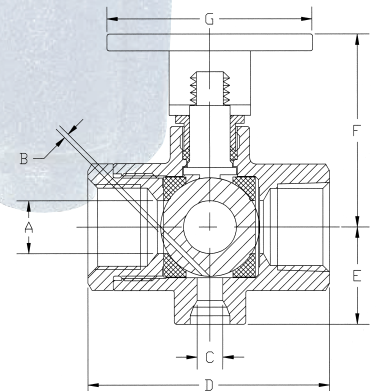
Conforms to Specification: MSS SP-110

Size	Part Numbers	Dimensions (in.)				
		A	B	C	D	Cv
3/8"	21-032	2-9/16	1-3/4	.375	3	6.8
1/2"	21-042	2-7/8	1-13/16	.500	3	9.8
3/4"	21-062	3-7/8	2-1/8	.687	4-1/8	25.0
1"	21-082	4-1/2	2-1/4	.875	4-1/8	35.0
1-1/4"	21-102	4-5/8	2-5/8	1.000	5-1/2	47.0
1-1/2"	21-122	5-1/4	2-7/8	1.250	5-1/2	81.0
2"	21-162	6-1/4	3	1.500	5-1/2	105.0

# STEAM TRAP TEST VALVE

## Maximum Operating Conditions:

- Pressure: 250 PSI
- Temperature: 406°F
- Available in 1/2", 3/4" and 1"  
Larger sizes on application.
- 1/4" NPT Blowdown on all Valves.



Size	Part Numbers	Dimensions (in.)						
		A	B	C	D	E	F	G
1/2" C.S.	23-041-2-3-13-21	0.500	0.125	0.375	2-1/4	1-1/16	2-1/16	3-1/8
1/2" S.S.	22-041-2-3-13-21	0.500	0.125	0.375	2-1/4	15/16	2-1/16	3-1/8
3/4" C.S.	23-061-2-3-13-21	0.688	0.172	0.375	3	1-1/4	2-7/16	4-1/2
3/4" S.S.	22-061-2-3-13-21	0.688	0.172	0.375	3	1-1/8	2-7/16	4-1/2
1" C.S.	23-081-2-3-13-21	0.875	0.172	0.375	4	2-7/8	3-5/8	6-1/8
1" S.S.	22-081-2-3-13-21	0.875	0.172	0.375	4	2-3/4	3-5/8	6-1/8

**NOTE:** See page 12 for further explanation of Lance Valves "Ordering System" when placing your order.

\* DuPont Reg. Trademark

\*\* Designed to be soft-soldered into lines

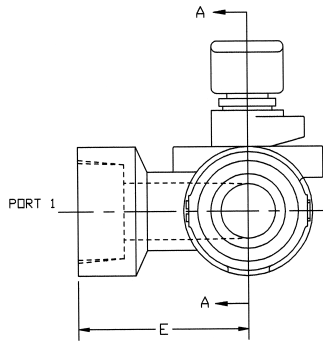
## OPTIONS: (when ordering add options to above part numbers)

- 1-1/4" Stem Extension, Plated Steel or Stainless Steel – Add Catalog option 8
- 2-1/4" Stem Extension, Plated Steel or Stainless Steel – Add Catalog option 9
- Integral Self-Lock Handle, Stainless Steel – Add Catalog option 11

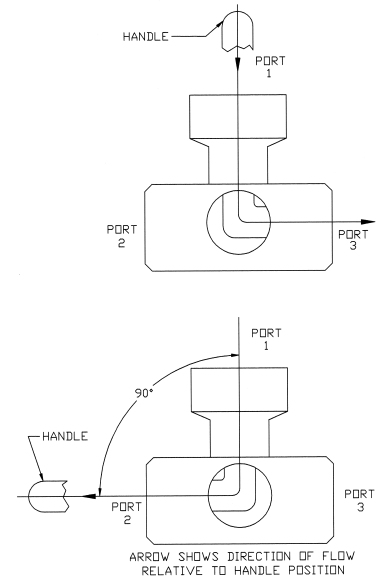
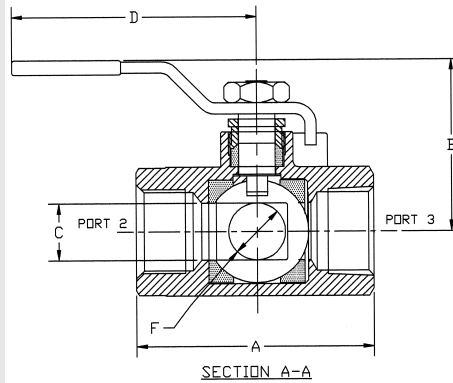
# 3-WAY DIVERTER BALL VALVES

## 316 STAINLESS STEEL (CF8M)

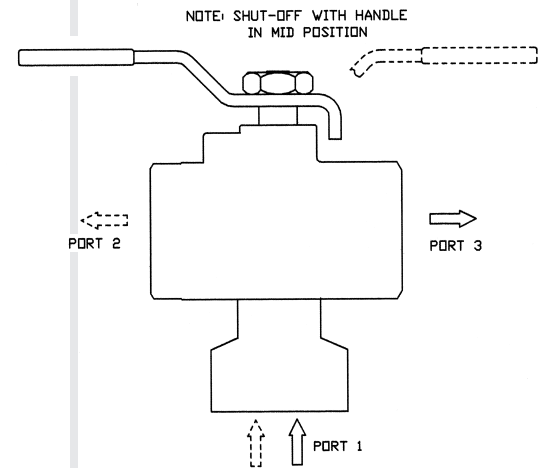
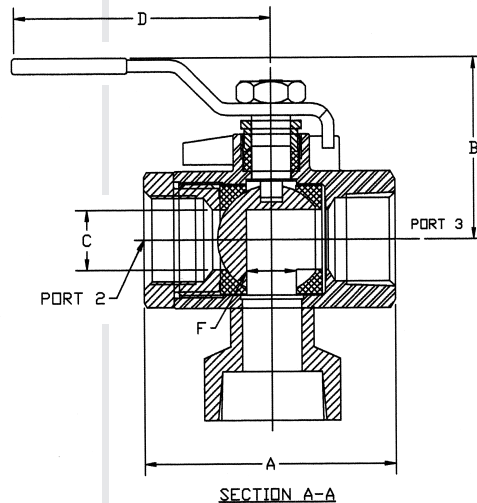
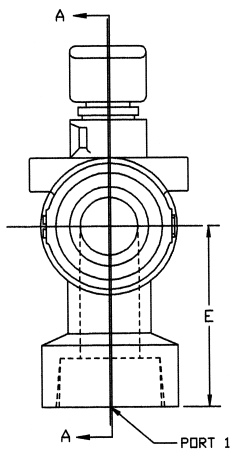
2000# WOG 1/2" - 1"  
1500# WOG 1-1/4" - 2"



### 90° SIDE ENTRY



### 180° BOTTOM ENTRY WITH SHUTOFF FEATURE



Size	Part Numbers		Dimensions (in.)					
	90° 3-WAY DIVERTER Side Entry	180° 3-WAY DIVERTER Bottom Entry	A	B	C	D	E	F
1/2"	22-041-6	22-041-7	2-1/4	1-13/16	.500	3	1-13/16	.375
3/4"	22-061-6	22-061-7	3	2-1/8	.688	3-7/8	2-1/4	.563
1"	22-081-6	22-081-7	3-3/8	2-1/4	.875	3-7/8	2-7/16	.750
1-1/4"	22-101-6	22-101-7	4	2-5/8	1.000	5-1/2	2-13/16	.875
1-1/2"	22-121-6	22-121-7	4-3/8	2-7/8	1.250	5-1/2	3-1/4	1.125
2"	22-161-6	22-161-7	5-1/2	3-1/16	1.500	5-1/2	3-13/16	1.375

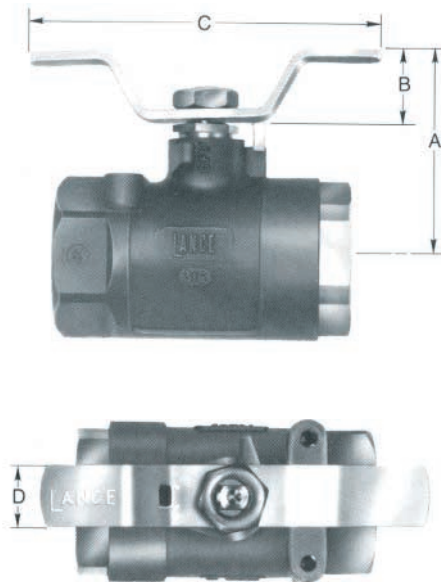
# LANCE VALVES OPTIONS

## TEE HANDLE

Designed for limited space applications. Adaptable to all valves and is available coated or uncoated.

Add Catalog option **12** to **Standard Part Numbers**. (See page 3)

**NOTE:** See page 12 for further explanation of Lance Valves "Ordering System" when placing your order.



Size	Dimensions (in.)			
	A	B	C	D
1/4"	1-15/16	13/16	2-3/4	1/2
3/8"	1-15/16	13/16	2-3/4	1/2
1/2"	2	13/16	2-3/4	1/2
3/4"	2-5/16	13/16	4	5/8
1"	2-7/16	13/16	4	5/8
1-1/4"	3	1	5-1/2	1
1-1/2"	3-1/4	1	5-1/2	1
2"	3-7/16	1	5-1/2	1

## STEM EXTENSIONS

Raises the standard lever handles from original position and is used for hard to reach and/or insulated valve applications. All hardware included for easy field installation. Also available as factory installed in both stainless and plated steel. Applicable to all Lance Valves.



### 1-1/4" STEM EXTENSION:

Add Catalog option **8** to **Standard Part Numbers**. (See page 3)

### 2-1/4" STEM EXTENSION:

Add Catalog option **9** to **Standard Part Numbers**. (See page 3)

## HOSE, CAP AND CHAIN

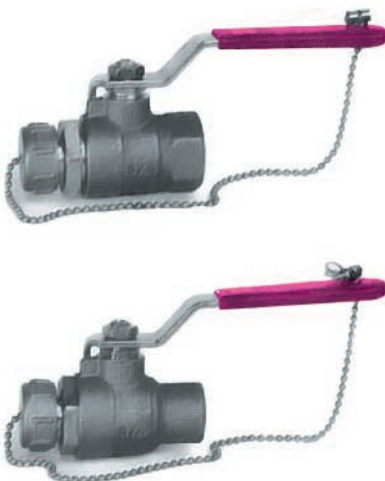
Hose end caps and chains (hose thread conforms to 3/4 -11 -1/2 N.H.). Available in 1/2" and 3/4" thread or solder ends. Note: End cap can not be used to contain Pressure.

### END CONNECTOR (Solder)\*:

Add End Connector **3** to **Standard Part Numbers**. (See page 3)

### END CONNECTOR (Threaded):

Add End Connector **4** to **Standard Part Numbers**. (See page 3)



\* Designed to be soft-soldered into lines

## 180° THREE-WAY DIVERTER (Bottom Entry)

Divert flow to either of two directions from inlet port. Mid position shutoff. See page 5.



Add Catalog option **7** to **Standard Part Numbers**. (See page 3)

**NOTE:** See page 12 for further explanation of Lance Valves "Ordering System" when placing your order.

# LANCE VALVES OPTIONS Continued

## 90° THREE-WAY DIVERTER (Side Entry)

Divert flow to either of two directions from inlet port. See page 5.



Add Catalog option **6** to **Standard Part Numbers**. (See page 3)

## INTEGRAL SELF LOCK HANDLE

Adaptable to all valves. Locks valve automatically in full open or closed position. Can be used with padlock. (Not included). Satisfies most industrial and federal safety standards. Produced exclusively from stainless steel.



Add Catalog option **11** to **Standard Part Numbers**. (See page 3)

## EXTERNAL LOCKING DEVICES

Bolts easily to mounting pad featured on all Lance threaded end valves. Can be field mounted or factory installed. All hardware included. Padlock not included.



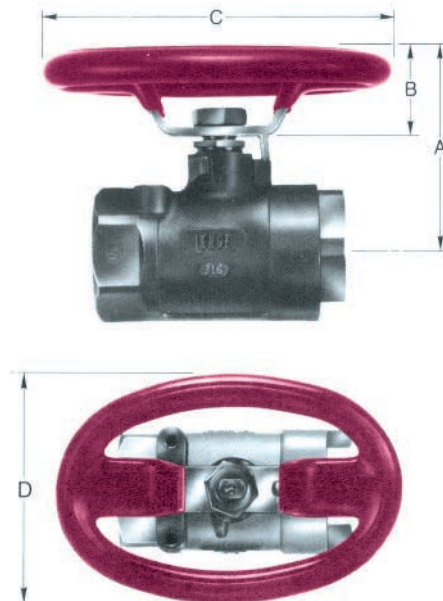
Add Catalog option **10** to **Standard Part Numbers**. (See page 3)

**NOTE:** See page 12 for further explanation of Lance Valves "Ordering System" when placing your order.

## OVAL HANDLE

Adaptable to all valves and is used for applications where a lever type handle would prove dangerous. Coated with plastisol for ease of operation.

Add Catalog option **13** to **Standard Part Numbers**. (See page 3)



**NOTE:** See page 12 for further explanation of Lance Valves "Ordering System" when placing your order.

Size	Dimensions (in.)			
	A	B	C	D
1/4"	2	7/8	3-1/8	2-1/4
3/8"	2	7/8	3-1/8	2-1/4
1/2"	2-1/16	7/8	3-1/8	2-1/4
3/4"	2-7/16	15/16	4-1/2	3
1"	2-9/16	15/16	4-1/2	3
1-1/4"	3-3/16	1-3/16	6-1/8	4
1-1/2"	3-7/16	1-3/16	6-1/8	4
2"	3-5/8	1-3/16	6-1/8	4

# LANCE VALVES OPTIONS Continued

## PRESSURE RELIEF VALVES

Used for venting downstream side of valve. Primarily for use with air operated tools. Readily available in bronze but can be produced in both carbon and stainless.

Test results over the full size range, (1/4" through 2") were not consistent with some variations over a number of valves of each size.

On average, the results indicate the following for PRESSURE RELIEF VALVE applications.

### Temperature:

Service below 0°F is not recommended. Service 0°F to 50°F is marginal.

### Pressure:

Service of valves 1/4" — 3/8" — 1/2" above 175 psi not recommended.

Service of valves 3/4" and 1" above 125 psi not recommended.

Service of valves 1-1/4" — 1-1/2" — 2" above 40 psi not recommended.

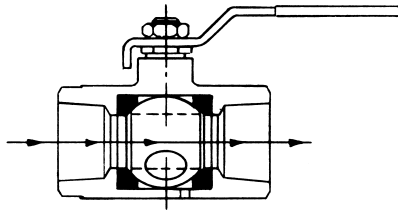
Pressure Relief Valves are a modification of our **Standard Valves** using the same body castings, which show Standard Valve Pressure Ratings (Cast in Body).

**These ratings do not apply to PRESSURE RELIEF VALVES.**

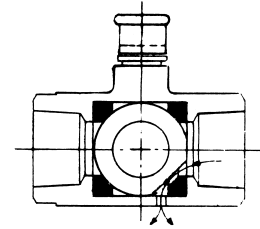
Add Catalog option **4** to **Standard Part Numbers**. (See page 3)

**NOTE:** See page 12 for further explanation of Lance Valves "Ordering System" when placing your order.

\* DuPont Reg. Trademark



Valve in open position. Drain vent sealed to atmosphere.



Valve closed and draining. Upstream seat stops airflow. Downstream system is vented in atmosphere.

## 250 PSIG STEAM SERVICE

Lance Ball Valves with optional carbon/graphite filled Teflon\* seats and a graphite stem packing are for use with saturated steam up to 250 psig. High temperature end connector gaskets are also provided where used. Available for all Lance Ball Valves.

Add Catalog option **21** to **Standard Part Numbers**. (See page 3)

## OXYGEN SERVICE VALVES

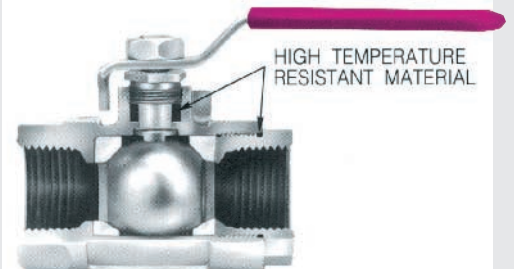
Valves produced for oxygen service are thoroughly cleaned, assembled with white gloves, and packed in protective plastic containers. Special pipe dope and lubricant are used. Available in bronze and stainless threaded ends only.



Add Catalog option **26** to **Standard Part Numbers**. (See page 3)

## FIRE SAFE DESIGN

All Lance fire safe design valves contain high temperature resistant stem packing. Larger valve sizes 1-1/4" through 2" also have an end connector gasket of high temperature resistant material. These valves are designed to seal even though the seats may be destroyed by fire. Available in carbon and stainless steel. Grounding spring is standard.

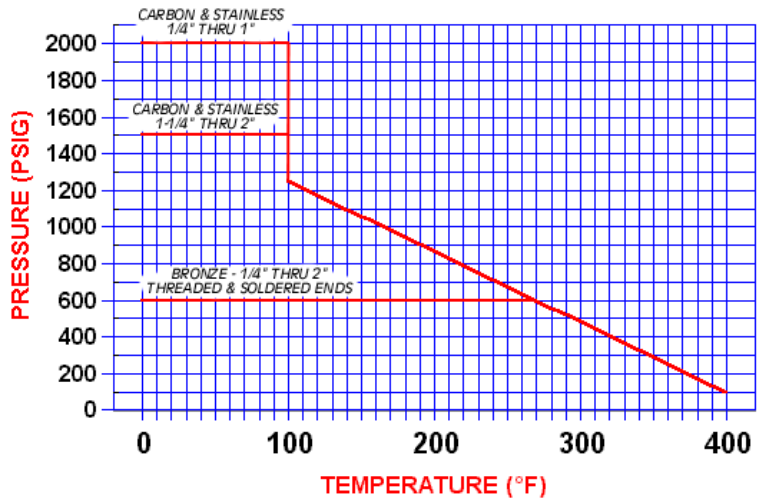


Add Catalog option **14** to **Standard Part Numbers**. (See page 3)

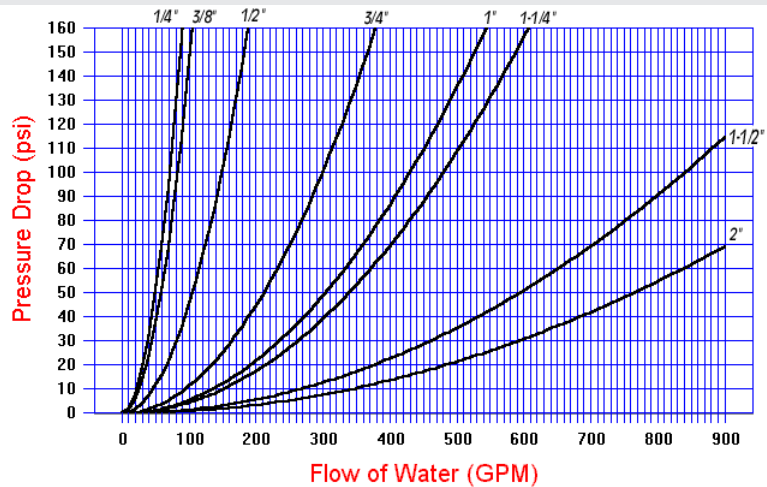


# LANCE VALVES ENGINEERING DATA

## PRESSURE TEMPERATURE RATING



## VALVE PRESSURE DROP



## TORQUE REQUIREMENTS

SIZE	1/4"	3/8"	1/2"	3/4"	1"	1-1/4"	1-1/2"	2"
IN. LBS.	40	40	50	90	150	240	320	360

Listed Values are Maximum Breakaway Torque for Carbon Steel and Stainless Steel Valves with Stainless Steel Trim and Reinforced Polytetrafluorethylene (RPTFE) Seats.

## SEAT APPLICATION GUIDE

Seat Type	Range	General Description
UHMWPE	to 180° F	Ultra High Molecular Weight Polyethylene Seats with Graphite Seals and Packing
PTFE	to 400° F	Polytetrafluorethylene (PTFE) Seats and Packing
RPTFE Lance Standard	to 450° F	Glass Reinforced Polytetrafluorethylene (RPTFE) Seat Seals and Packing
CGPTFE	to 500° F	25% Carbon and Graphite PTFE Seats, Graphite Seals and Packing

# LANCE VALVES AUTOMATED PRODUCTS

## PNEUMATIC ACTUATORS AND MOUNTING KITS

Lance can provide pneumatic actuators in either double-acting or spring return designs over our full line of valves. Our actuators are compact, rugged, and are available in a wide range of torques. This ensures proper sizing of our actuators to our valves and eliminates the necessity of installing a larger, more expensive, oversized actuator because an intermediate size is not

available. Accessories such as limit switches, solenoid valves and positioners are also available. Our mounting hardware is precisely designed and manufactured in-house, not farmed out. We control the manufacturing process, and will work with you to guarantee your satisfaction. **For current dimensions, consult the factory.**

### BENEFITS of Lance Automation

#### COMPACT:

Our torque-weight ratios are among the lowest in the industry.

#### RELIABLE:

Each actuator has a minimum design life of 250,000 cycles.

#### CORROSION RESISTANT:

Our actuators are designed to withstand the toughest corrosive environments.

#### FLEXIBLE:

The Actuators and accessories are designed to allow for customization to meet specific customer needs.

#### COST:

We pride ourselves on offering superior products at competitive prices. Our goal is to offer better quality and more features while still pricing at the levels of actuators without these features.

### FEATURES

- Double piston, double rack and pinion design
- Choice of three actuator materials for body and end caps
- Pistons, cylinder guides and racks of one piece molded polyaramide resin
- Actuator shaft of 303 stainless steel
- Double O-rings seal actuator shaft at top and bottom of actuator
- Piston guides have large contact area on cylinder wall for maximum support
- Concentric spring sets on the spring return unit, single acting or fail-safe
- Extended shaft on actuator top
- Recessed square female drive and (ISO) bolt circle on bottom of actuator
- Top shaft, solenoid block and accessory bolt circle conform to NAMUR standard



### Engineering Specifications

Body Material:	Aluminum, glass-filled polyester, 316 SS
Shaft:	303 SS w/double O-ring seal
Temp Range:	-25° F to 195° F
O-Rings:	BUNA-N
Output Torques:	60-17,000 in-lbs
Supply Air:	60 psi min., 120 psi max.
Air Connections:	1/4" NPT
Mounting Dimensions:	ISO and NAMUR

# LANCE VALVES AUTOMATED PRODUCTS

## ELECTRIC ACTUATORS AND MOUNTING KITS

**L**ance can provide electric actuators mounted to our full product line. Our 94 Series is a compact, rugged design featuring a thermoplastic housing, a standard manual override/position indicator, stainless steel fasteners and a full range of accessories. It is rated NEMA 4X. Our larger 92 Series is available in an aluminum housing with an epoxy powder finish, the same features as the 94 series, and is rated NEMA 4X, 7, 9.

**B**oth series are designed to actuate our complete line of valves. Our mounting hardware is precisely designed and manufactured in-house to guarantee the highest level of quality is achieved.

**A** wide variety of optional features and mountings are available. We will work with you to guarantee your satisfaction.

**For current dimensions, consult the factory.**

### FEATURES

- Rugged construction
- Compact design
- Reversing type motor, 115 VAC, 50/60 Hz single phase
- Brushless, capacitor-run motors (AC models)
- Internal thermal overload protection with auto reset (AC models)
- Permanently lubricated gear train
- Thermally-bonded epoxy power coating with stainless trim
- ISO bolt circle
- Two 1/2" NPT conduit ports prevent interference between control and power signals
- Visual position indicator (beacon); valve position visible from a distance
- Easy to use declutchable manual override is standard on all units
- Standard travel stop limit switches can simultaneously be used for light indication
- 94 series (NEMA 4X)
- 92 series (NEMA 4X, 7, 9)
- Corrosion-resistant mounting
- All 115 VAC and 220 VAC motors are CE marked

### OPTIONS

- Limit Switches
- Feedback Potentiometer
- Heater and thermostat
- Milliamp Positioner
- Voltages: 12, 24, 220 VAC; 12, 24 VDC
- Center off Operation
- Mechanical Brake
- Other options available



### Engineering Specifications

Size:	A94, B94, S92, A92, B92, C92
Torque:	150-2000 in-lbs
Voltage:	120 VAC, 50/60 Hz Amp Draw: S92, B92: .5 Amps, A92: .75 Amps, C92: 1.0 Amp, A94: 5 Amps, B94: .75 Amps.
Conduit Entry:	1/2" NPT
Max Ambient Temp:	150° F
Switches:	2 single pole, double throw (15 Amp rating)
Cycle Time 90°:	S92, A92: 10 seconds, B92, C92: 25 seconds: A94, B94: 5 seconds.

# LANCE VALVES ORDERING SYSTEM

**23-061-2-3-13-21**

**PRODUCT:**

**2** Ball Valve

**BASIC MATERIAL:**

- 1** Bronze
- 2** 316 Stainless Steel
- 3** Carbon Steel

**SIZE:**

- 02** 1/4"
- 03** 3/8"
- 04** 1/2"
- 06** 3/4"
- 08** 1"
- 10** 1-1/4"
- 12** 1-1/2"
- 16** 2"

**END CONNECTOR:**

- 1** NPT Female
- 2** Solder
- 3** Solder X Hose
- 4** NPT X Hose

**OPTIONS:**

- 2** Steam Trap Test
- 3** 316 Stainless Ball & Stem
- 4** Pressure Relief Ball
- 5** Pinned End Connector
- 6** 90° 3-Way Diverter
- 7** 180° 3-Way Diverter
- 8** 1-1/4" Extended Stem
- 9** 2-1/4" Extended Stem
- 10** External Locking Device
- 11** Integral Self Lock Handle
- 12** Tee Handle
- 13** Oval Handle
- 14** Fire Safe Design
- 15** Grounding Spring
- 16** Double O-Ring Stem
- 17** Hole in Ball below Stem
- 20** UHMWP Seals
- 21** 250 PSI Steam
- 25** Hole in Ball Up Stream
- 26** Cleaned for O<sub>2</sub> Service
- 27** Stainless Steel ID Tag
- 39** 3-1/4" Stem Extension
- 40** Plastic Panel Mount Handle
- 45** Chain Operator Handle

**NOTE: Separate Options with hyphens (as shown) when placing your order.**

## ATS PRODUCTS:



Division of **Advanced Thermal Systems, Inc.**

15 Enterprise Drive, Lancaster, NY 14086

Phone: 716-681-1800 Fax 716-681-0228

**TOLL FREE: 800-443-9194**

EMAIL: [sales@lancevalves.com](mailto:sales@lancevalves.com) WEB SITE: [www.lancevalves.com](http://www.lancevalves.com)