

spirax/sarco®

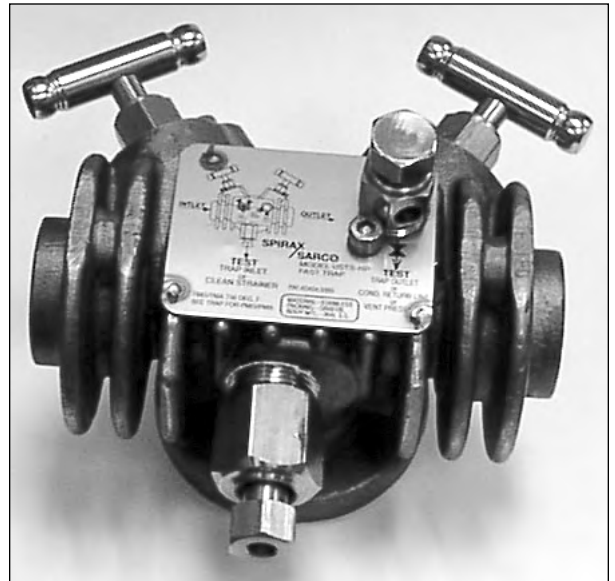
USTS-HP Universal Steam Trap Station

The USTS-HP Universal steam trap station is designed to have an inlet and outlet isolation valves, an integral strainer with blowdown and test valve. Designed as a complete steam main drip or tracer steam trap station. The station will support all of the Spirax Sarco universal connection steam traps.

Model ⇄	USTS-HP
PMO	650 psig
Sizes	1/2", 3/4"
Connections	NPT, SW
Construction	Stainless Steel

Limiting Operating Conditions

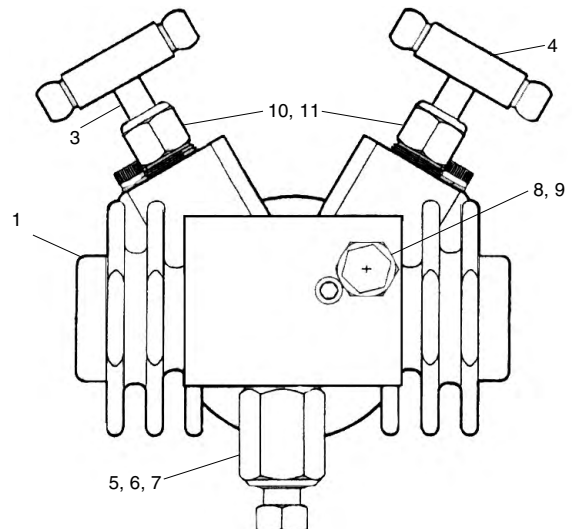
Max. Operating Pressure (PMO)	650 psig (45 barg)
Max. Operating Temperature (TMO)	750°F (399°C)
Pressure Shell Design Conditions	
PMA	650 psig (45 barg)



Steam Trap Station shown
(Trap of Choice Sold Separately)

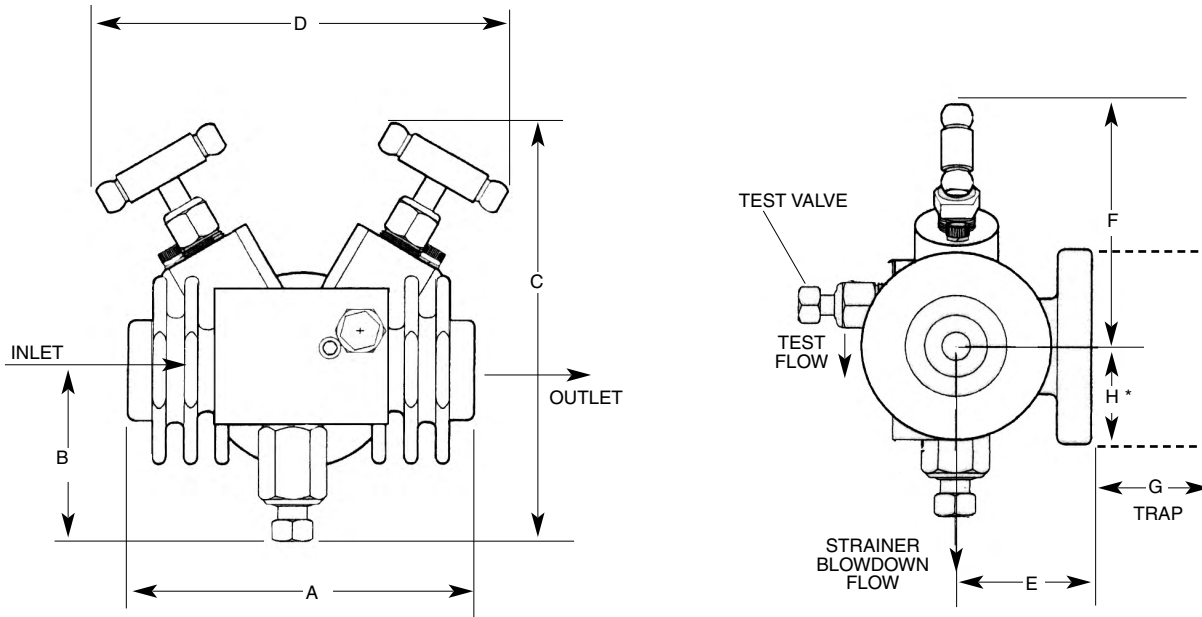
Construction Materials

No.	Part	Material
1	Body	Stainless Steel 304L
2	Valve Head (Internal)	Stainless Steel 440
3	Isolation Valve Spindle	Stainless Steel 316
4	Handle	Stainless Steel 303
5	Strainer Valve	Stainless Steel 303
6	Strainer Valve Ball Head (Internal)	Stainless Steel 440
7	Strainer screen 20 mesh (Internal)	Stainless Steel 303
8	Test Valve	Stainless Steel 303
9	Test Valve Ball Head (Internal)	Stainless Steel 440
10	Packing Nut	Stainless Steel 303
11	Packing (Internal)	Grafoil



Local regulation may restrict the use of this product below the conditions quoted. Limiting conditions refer to standard connections only.
In the interests of development and improvement of the product, we reserve the right to change the specification.

USTS-HP Universal Steam Trap Station



A 4.8"	B 2.4"	C 5.8"	D 5.6"	E 1.9"	F 3.4"
G UTD52L 4.3"	G UTD52H 4.8"	G UFT 9.0"	G UIB30 6.2"	G UIB30H 9.6"	G UBP32 3.2"
H UTD52L 1.3"	H UTD52H 1.3"	H UFT 2.2"	H UIB30 4.9"	H UIB30H 6.3"	H UBP32 1.3"

*H = Centerline of trap station connector to bottom of trap

Sample Specification

The USTS-HP steam trap station to be manufactured of all stainless steel construction. The station will have two isolation valves, one trap test valve and one strainer blowdown valve. The test valve is on the discharge side of the trap to test trap function: to depressurize that area, or to check the condensate return lines for plugging. The inlet isolation valve blocks the trap inlet while the outlet valves blocks the outlet to the condensate return line downstream of the test valve. The station is supplied with an integral inlet strainer with a blowdown valve for clean out and depressurized mode so the trap or strainer can be repaired or replaced. The station will accept all Spirax Sarco universal traps or any competitors traps who use the standard universal connector design.

Installation

Valve handles to be in upward position, with the strainer pointing straight down and trap connection on the side. Mount selected trap to the connector and torque to proper torque level. On initial start-up turn inlet and outlet valves to test to blow any installation dirt and debris from the system, (be careful to stay away from flow). Turn both valves to the on position.

How to order

Model number / pipe size / connection type

Example: USTS -HP 3/4" NPT

SPARES

Blowdown Valve Assembly (strainer)	1 required
Strainer Screen	1 required
GP2 valve assy	2 required for complete station
Mounting bolt	2 required
Vent valve assy	1 required

TI-6-807-US 12.04