



Cipriani Harrison Valves Corp.

Filter & Strainer

25 Series (Inline)

24 Series (90° Angle)

Application

Stainless steel filters and strainers are used in liquid flow systems for removal of various size particles.

Working Principle

Filters allow the removal of fine particles from various liquids. The stainless steel mesh can be reused after cleaning. Strainers are coarse filters that remove larger particles.

Standard Design

The filters and strainers consist of a housing with an inlet and outlet. Inside the housing the straining element is fixed in such a way that the flow is forced through it. This element consists of a backup tube and straining mesh which is fitted between two flanges by means of a rubber gasket. The flanges clamp to the housing with a standard clamp and gasket, allowing for easy assembly and disassembly for cleaning or inspection. All Seats and Seals are made from FDA approved materials.

Available Sizes

In-line

1", 1 1/2", 2", 2 1/2", 3"

Side Entry

1", 1 1/2", 2", 2 1/2", 3", 4"

Options

In-line or side entry styles.

FDA Seal Materials : Silicone (Std.), EPDM, Viton, Buna

Long or Short Lengths.

End Connections : Butt-Weld or Sanitary Clamp

1/4" or 1/8" holes in backup tube.

Straining Mesh : 6 mesh-325 mesh (3353 Micron-43 Micron)



Cipriani Harrison Valves Corp.

30271 Tomas Street • Rancho Santa Margarita, CA 92688 • Tel. 949/589-3978 • Fax 949/589-3979

Email : cipriani@ciprianicorp.com • Website : <http://www.ciprianicorp.com/>

Filter & Strainer

25 Series (Inline)
24 Series (90° Angle)

TECHNICAL SPECIFICATIONS :

Material :

Product wetted steel parts.....AISI 316L or AISI 304L
Other steel parts.....AISI 304

FDA Seals :

Standard.....SILICONE
Optional.....BUNA, Viton, EPDM

Nominal Pressure :

Maximum product pressure.....117 PSI maximum (8 bars)
Test pressure 145 PSI (10 bars)

Filter Area :

Short1 sq.ft. (0.65 actual)
Long.....2 sq.ft. (1.94 actual)

Surface Finish :

Surface in contact with product..Ra <= 25 μ in (Grit 220g)
Optional.....Ra <= 15 μ in (Grit 320g)
*Electropolishing available upon request

Connections Sanitary Clamp (ISO 2852 / BS 4825)

Optional..... Butt Weld (ISO 2037 / BS 4825)
I-Line
Other Connection on request

Straining Mesh

MESH	MICRON RATING	AREA BET. WIRES	% OPEN	WIRE SIZE
6	3353	0.132	62.7	0.035
8	2540	0.100	64.0	0.025
10	1095	0.075	56.3	0.025
12	1524	0.060	51.8	0.023
16	1130	0.045	50.7	0.018
20	864	0.034	46.2	0.016
30	533	0.021	40.2	0.016
40	381	0.015	36.0	0.010
50	280	0.011	30.3	0.009
60	229	0.009	30.5	0.008
80	178	0.007	31.4	0.006
100	140	0.004	37.4	0.003
150	104	0.004	37.4	0.093
200	73	0.003	33.6	0.002
325	43	0.002	30.0	0.014

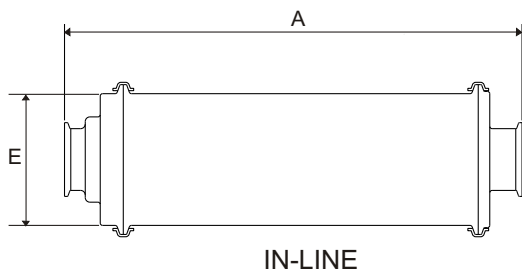
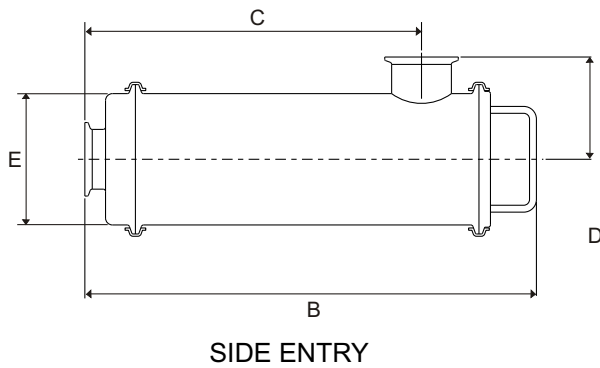


30271 Tomas Street • Rancho Santa Margarita, CA 92688 • Tel. 949/589-3978 • Fax 949/589-3979
Email : cipriani@ciprianicorp.com • Website : <http://www.ciprianicorp.com/>

Filter & Strainer

25 Series (Inline)
24 Series (90° Angle)

Dimensions (Inches)



		SHORT				
		A	B	C	D	E
CLAMP	1	15 3/4	15 3/4	12 1/16	3 1/2	4 1/2
	1 1/2	15 3/4	15 3/4	12 7/16	3 1/2	4 1/2
	2	15 3/4	15 3/4	11 1/16	3 1/2	4 1/2
	2 1/2	15 3/4	15 3/4	11 7/16	3 1/2	4 1/2
	3	15 3/4	15 3/4	11 1/16	3 1/2	4 1/2
Butt-Weld	1	16 3/16	16	12 11/16	3 7/8	4 1/2
	1 1/2	16 5/16	16 1/8	12 9/16	3 7/8	4 1/2
	2	16 3/8	16 1/8	12 1/4	3 7/8	4 1/2
	2 1/2	16 3/4	16 3/8	12 1/4	4 1/8	4 1/2
	3	17	16 3/8	12	4 1/8	4 1/2
I-LINE FEMALE	1	16 9/16	16 3/16	12 7/8	3 15/16	4 1/2
	1 1/2	16 13/16	16 5/16	12 3/4	4 1/16	4 1/2
	2	17 3/16	16 3/8	12 9/16	4 1/8	4 1/2
	2 1/2	17 3/16	16 37/64	12 5/8	4 7/16	4 1/2
	3	18 9/16	16 1/164	11 3/4	3 13/16	4 1/2
I-LINE MALE	1	16 3/4	16 11/32	12 1/2	3 9/16	4 1/2
	1 1/2	16 9/16	15 15/16	12 3/8	3 1/16	4 1/2
	2	116/16	15 7/8	12	3 5/8	4 1/2
	2 1/2	17 3/16	16 1/164	12	3 13/16	4 1/2
	3	18 9/16	16 1/16	11 3/4	3 13/16	4 1/2
4	N.A.	16 1/16	11 1/4	3 13/16	4 1/2	

		LONG				
		A	B	C	D	E
CLAMP	1	35 3/8	33 13/16	32	3 1/2	4 1/2
	1 1/2	35 3/8	33 13/16	31 3/4	3 1/2	4 1/2
	2	35 3/8	33 13/16	31 1/4	3 1/2	4 1/2
	2 1/2	35 3/8	33 13/16	31 1/4	3 1/2	4 1/2
	3	35 3/8	33 13/16	31	3 1/2	4 1/2
Butt-Weld	1	35 13/16	34 1/16	32 1/4	3 7/8	4 1/2
	1 1/2	35 15/16	34 3/16	32 1/8	3 7/8	4 1/2
	2	36	34 3/16	31 7/8	3 7/8	4 1/2
	2 1/2	36 3/8	34 7/16	31 7/8	4 1/8	4 1/2
	3	36 5/6	34 7/16	31 5/8	4 1/8	4 1/2
I-LINE FEMALE	1	36 3/16	34 1/4	32 7/16	3 15/16	4 1/2
	1 1/2	36 7/16	34 3/8	32 5/16	4 1/16	4 1/2
	2	36 13/16	34 7/16	32 1/8	4 1/8	4 1/2
	2 1/2	37 1/8	34 3/4	32 3/16	4 7/16	4 1/2
	3	38 1/2	34 1/2	31 5/16	3 13/16	4 1/2
I-LINE MALE	1	36 3/16	33 7/8	32 1/16	3 9/16	4 1/2
	1 1/2	36 7/16	34	31 15/16	3 1/16	4 1/2
	2	36 13/16	33 15/16	31 5/8	3 5/8	4 1/2
	2 1/2	37 1/8	34 1/8	31 9/16	3 13/16	4 1/2
	3	38 1/2	34 1/2	31 5/16	3 13/16	4 1/2
4	N.A.	34 1/8	30 13/16	3 13/16	4 1/2	

 **Cipriani Harrison Valves Corp.**

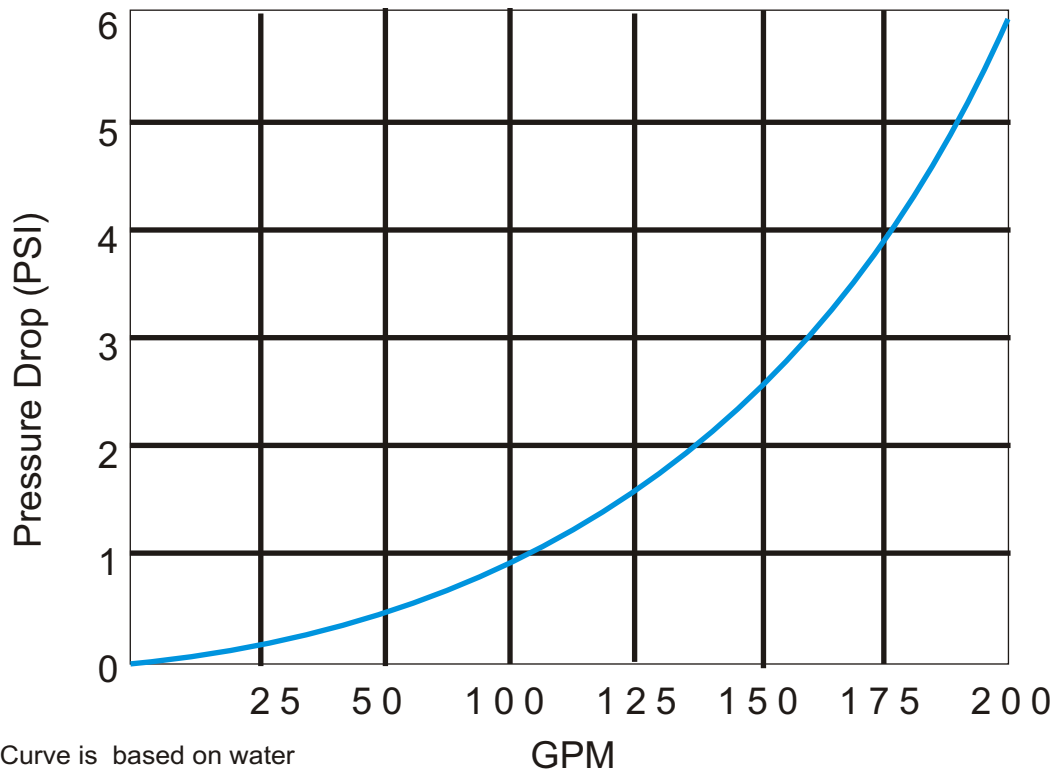
30271 Tomas Street • Rancho Santa Margarita, CA 92688 • Tel. 949/589-3978 • Fax 949/589-3979
Email : cipriani@ciprianicorp.com • Website : <http://www.ciprianicorp.com/>

Filter & Strainer

25 Series (Inline)
24 Series (90° Angle)

FILTER/STRAINER PRESSURE DROP CURVE

For long and short units
25 Series & 24 Series



Curve is based on water
Short version max. Flow 125 gpm
Long version max. Flow 200 gpm

PROPER FILTERING RECOMMENDATIONS

These filters and strainers are designed for particulate removal in liquid flow systems. They are not made to remove product impurities or odors. Effectiveness of the filter and strainers vary according to line pressure, size and amount of particles in a product, etc.

FILTER MEDIA SHOULD BE CHANGED IF THERE IS A PRESSURE DROP OF 2 TO 5 PSI OVER NORMAL PRESSURE.

When using strainers or filters with a high speed or positive displacement pump, use a by-pass or pressure relief system to protect the strainers and filters.

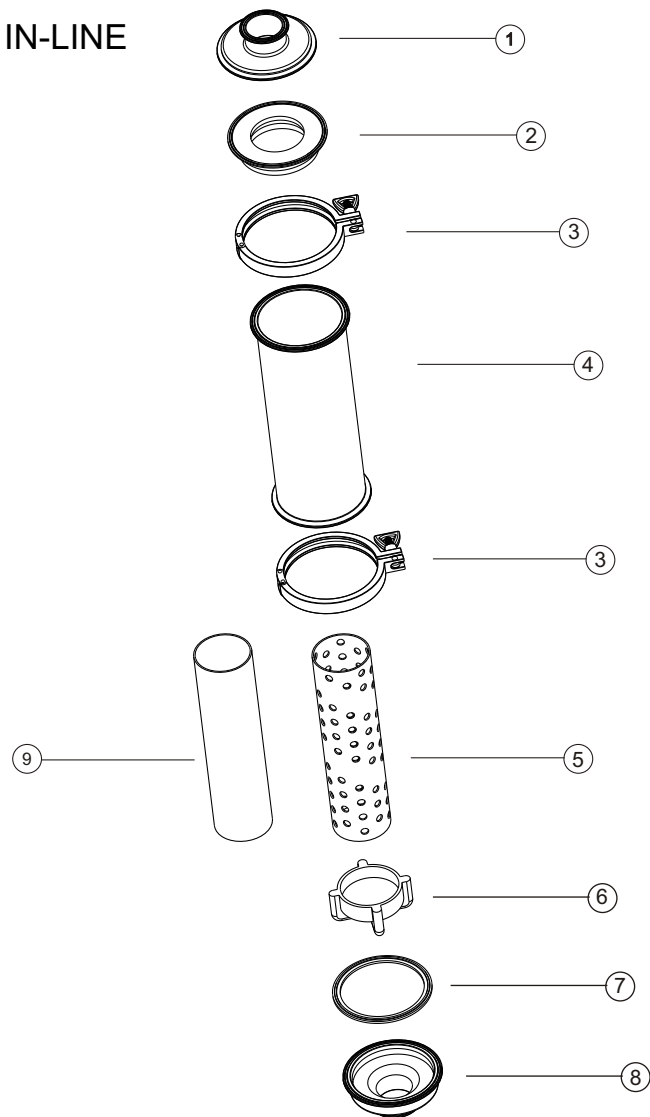
 **Cipriani Harrison Valves Corp.**

30271 Tomas Street • Rancho Santa Margarita, CA 92688 • Tel. 949/589-3978 • Fax 949/589-3979
Email : cipriani@ciprianicorp.com • Website : <http://www.ciprianicorp.com/>

Filter & Strainer

25 Series (Inline)
24 Series (90° Angle)

IN-LINE



Exploded view of standard Inline Strainer

NO.	PART NO.	DESCRIPTION	MATERIAL
1	2501	COVER	AISI 316L / AISI 304L
2	2502	TOP GASKET	SILICONE
3	2503	CLAMP	AISI 304
4	2504	HOUSING	AISI 316L / AISI 304L
5	2505	BACK UP TUBE	AISI 316L / AISI 304L
6	2506	BOTTOM GASKET	SILICONE
7	2507	CLAMP GASKET	SILICONE
8	2508	BOTTOM COVER	AISI 316L / AISI 304L
9	2509	STRAINING MESH	AISI 316

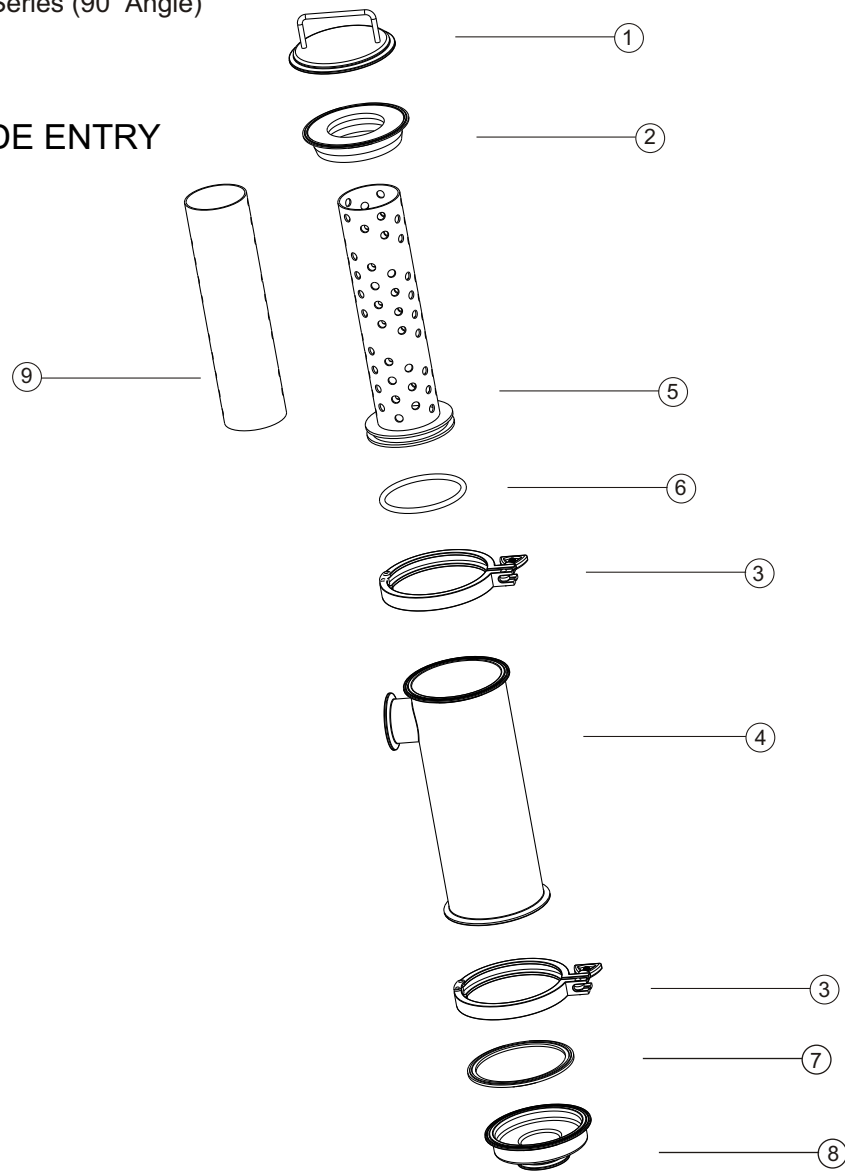
 **Cipriani Harrison Valves Corp.**

30271 Tomas Street • Rancho Santa Margarita, CA 92688 • Tel. 949/589-3978 • Fax 949/589-3979
Email : cipriani@ciprianicorp.com • Website : <http://www.ciprianicorp.com/>

Filter & Strainer

25 Series (Inline)
24 Series (90° Angle)

SIDE ENTRY



Exploded view of standard side entry Strainer

NO.	PART NO.	DESCRIPTION	MATERIAL
1	2401	COVER	AISI 316L / AISI 304L
2	2402	TOP GASKET	SILICONE
3	2403	CLAMP	AISI 304
4	2404	HOUSING	AISI 316L / AISI 304L
5	2405	BACK UP TUBE	AISI 316L / AISI 304L
6	2406	O'RING	SILICONE
7	2407	CLAMP GASKET	SILICONE
8	2408	BOTTOM COVER	AISI 316L / AISI 304L
9	2409	STRAINING MESH	AISI 316

 **Cipriani Harrison Valves Corp.**

30271 Tomas Street • Rancho Santa Margarita, CA 92688 • Tel. 949/589-3978 • Fax 949/589-3979
Email : cipriani@ciprianicorp.com • Website : <http://www.ciprianicorp.com/>

Filter & Strainer

25 Series (Inline)
24 Series (90° Angle)

25 & 24 Series Filter & Strainer Ordering System

