



## Cipriani Harrison Valves Corp.

### Application

Inline sight glasses are used in pipelines for visual observation of product flow.

### Working Principle

Once the sight glass is installed inline product will flow through the inside of the unit allowing for easy visual examination of liquid flow.

### Standard Design

The food grade polycarbonate tube is as clear as glass and it is unbreakable under normal use. It is mounted under two forged stainless steel flanges by means of stainless steel studs and nuts. The forged stainless steel flanges ensure non porous, smooth surface and dimensionally stable construction.

### Available Sizes

1", 1 1/2", 2", 2 1/2", 3", 4"

### Options

End connections: Sanitary Clamp, Butt-Weld, I-Line or others on request.

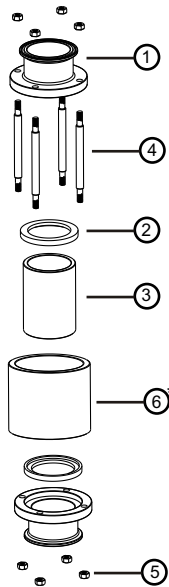
Guard : The outer polycarbonate guard protects the inner glass from being broken or damaged.

Material : AISI 316L or AISI 304L

### FDA Seal Material

Standard : PTFE

Optional : Silicone



Exploded view of standard Sight Glass

NO.	PART NO.	DESCRIPTION	QTY.	MATERIAL
1	9501	FLANGE	2	AISI 316L / AISI 304L
2	9502	GASKET	2	PTFE
3	9503	TUBE	1	POLYCARBONATE (LEXAN)
4	9504	STUD	6	AISI 304
5	9505	NYLOCK NUT	6	AISI 304 / NYLON
6*	9506	GUARD	1	POLYCARBONATE

\* Guard is not a standard accessory of 95 series Sight Glass. It is available upon request.

## Sight Glass

### 95 Series



Standard Sight Glass



Guarded Sight Glass



30271 Tomas Street • Rancho Santa Margarita, CA 92688 • Tel. 949/589-3978 • Fax 949/589-3979

Email : [cipriani@ciprianicorp.com](mailto:cipriani@ciprianicorp.com) • Website : <http://www.ciprianicorp.com/>

## Sight Glass

95 Series

### TECHNICAL SPECIFICATIONS :

#### Material :

Product wetted steel parts.....AISI 316L or AISI 304L  
Other steel parts.....AISI 304

#### FDA Seals :

Standard.....PTFE  
Optional.....SILICONE

#### Tube :

Standard.....Food grade polycarbonate (Lexan)  
Optional.....Pyrex glass  
Guard (Optional) .....Polycarbonate

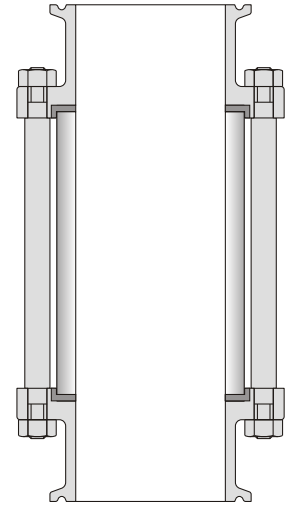
#### Nominal Pressure :

Maximum product pressure.....5 bar maximum (75 PSI)  
Working temperature.....215° Fahrenheit max. (Lexan)  
230° Fahrenheit max. (Pyrex Glass)

#### Surface Finish :

Surface in contact with product..Ra <= 25 µ in (Grit 220g)  
Optional.....Ra <= 15 µ in (Grit 320g)  
\*Electropolishing available upon request.

**Connections** ..... Sanitary Clamp (ISO 2852 / BS 4825)  
**Optional**..... Butt Weld (ISO 2037 / BS 4825)  
I-Line  
Other Connections on request

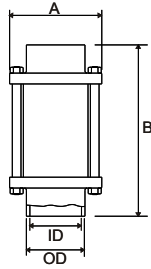


30271 Tomas Street • Rancho Santa Margarita, CA 92688 • Tel. 949/589-3978 • Fax 949/589-3979  
Email : [cipriani@ciprianicorp.com](mailto:cipriani@ciprianicorp.com) • Website : <http://www.ciprianicorp.com/>

# Sight Glass

95 Series

## TECHNICAL SPECIFICATIONS :

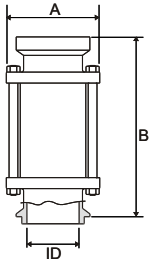
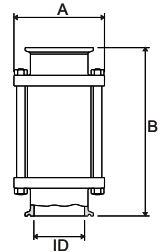


### Butt Weld

Dimensions	1"	1½"	2"	2 ½"	3"	4"
A	2 1/8	2 15/16	3 11/32	3 3/4	4 1/8	5 ½
B	6 17/32	6 17/32	6 17/32	6 17/32	6 17/32	6 17/32
ID	7/8	1 3/8	1 7/8	2 3/8	2 55/64	3 27/32
OD	1	1 ½	2	2 ½	3	4

### Sanitary Clamp

Dimensions	1"	1½"	2"	2 ½"	3"	4"
A	2 1/8	2 15/16	3 11/32	3 3/4	4 1/8	5 ½
B	6 17/32	6 17/32	6 17/32	6 17/32	6 17/32	6 17/32
ID	7/8	1 3/8	1 7/8	2 3/8	2 55/64	3 27/32



### I-Line

Dimensions	1"	1½"	2"	2 ½"	3"	4"
A	2 1/8	2 15/16	3 11/32	3 3/4	4 1/8	5 ½
B	6 17/32	6 17/32	6 17/32	6 17/32	6 17/32	6 17/32
ID	7/8	1 3/8	1 7/8	2 3/8	2 55/64	3 27/32

\* Consult the factory for I-line Male x Male or I-line Female x Female "B" Dimensions.

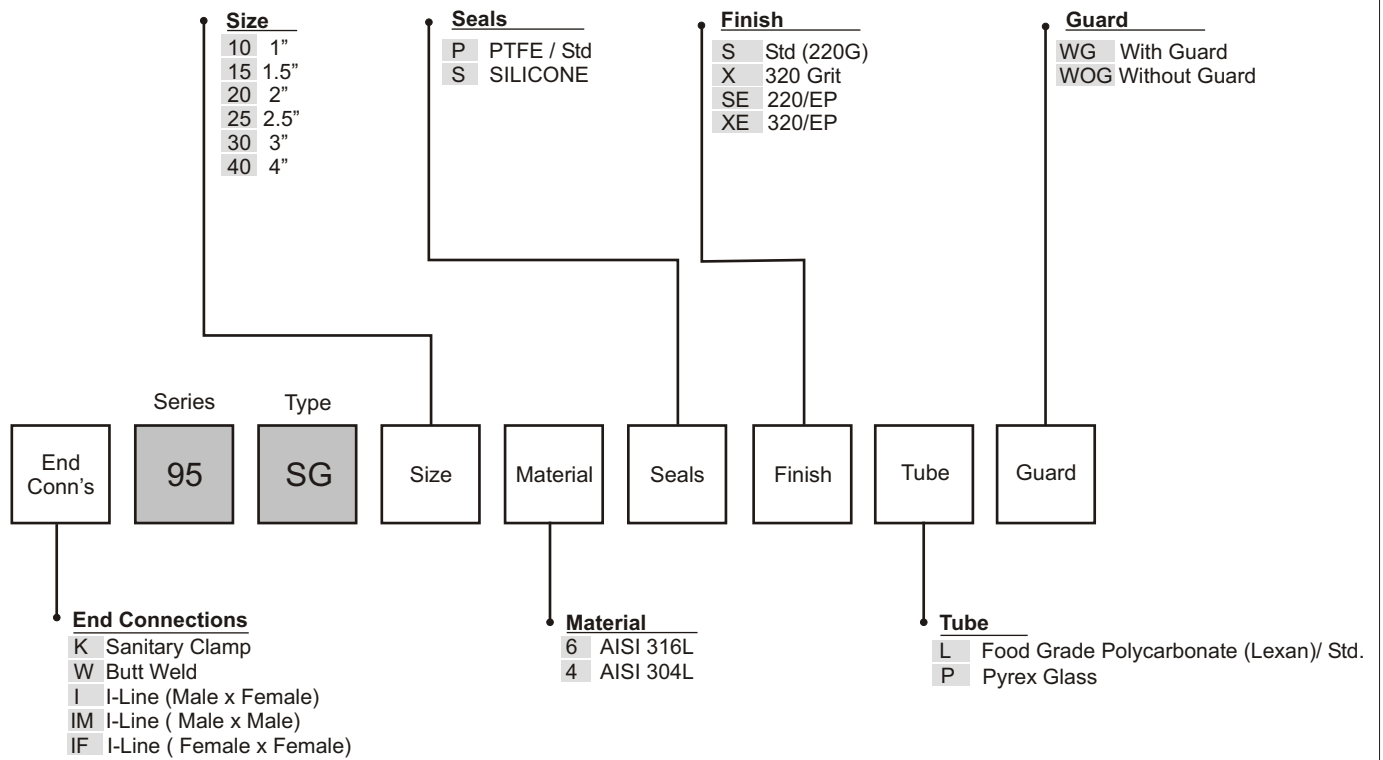


30271 Tomas Street • Rancho Santa Margarita, CA 92688 • Tel. 949/589-3978 • Fax 949/589-3979  
 Email : [cipriani@ciprianicorp.com](mailto:cipriani@ciprianicorp.com) • Website : <http://www.ciprianicorp.com/>

# Sight Glass

95 Series

## 95 Series Sight Glass Ordering System



30271 Tomas Street • Rancho Santa Margarita, CA 92688 • Tel. 949/589-3978 • Fax 949/589-3979  
 Email : [cipriani@ciprianicorp.com](mailto:cipriani@ciprianicorp.com) • Website : <http://www.ciprianicorp.com/>