

**SVF** Flow Controls  
I N C O R P O R A T E D

13560 Larwin Circle, Santa Fe Springs, Ca. 90670  
(800) 783-7836 (562) 802-2255

Fax (562) 802-3114  
NetSite [www.SVF.net](http://www.SVF.net)  
E-mail Sales @ SVF.net

# C6/C7/C32 SERIES

**CHLORINE  
BALL VALVES**

**Size Range:**

1/4" - 4"

**End Connections:**

NPT  
Socket Weld  
300# Flanged

**Valve Materials:**

Carbon Steel

**Ball and Stem Materials:**

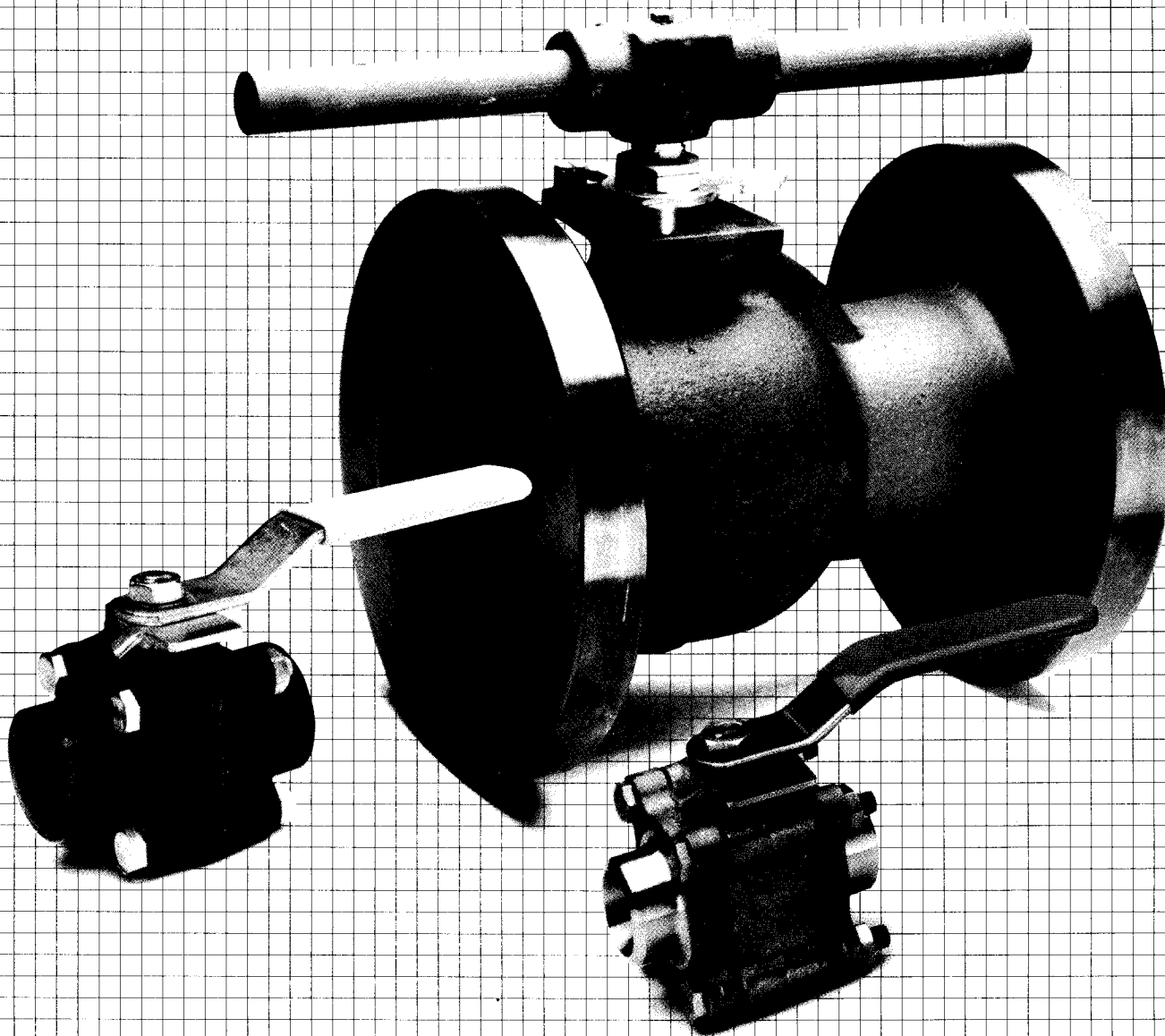
Monel  
Hastelloy C

**Seat Materials:**

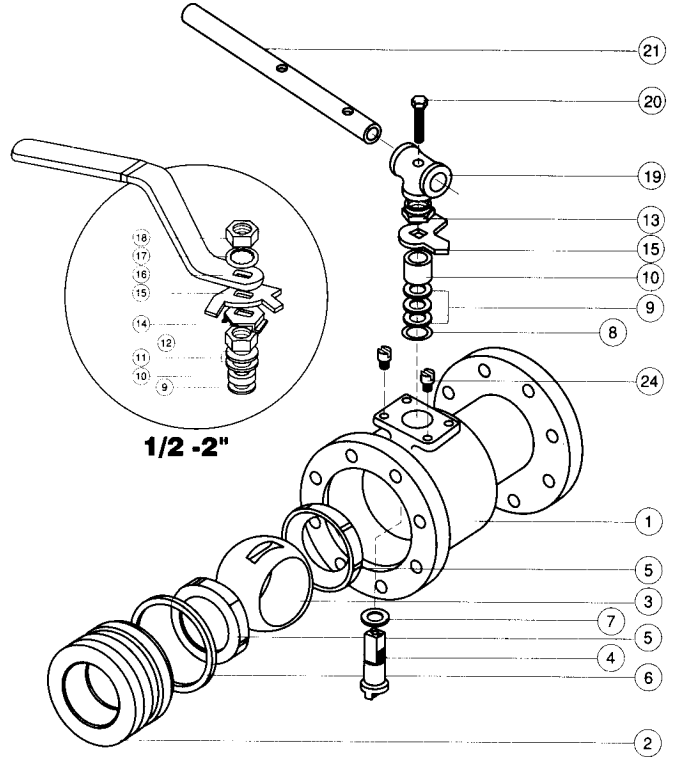
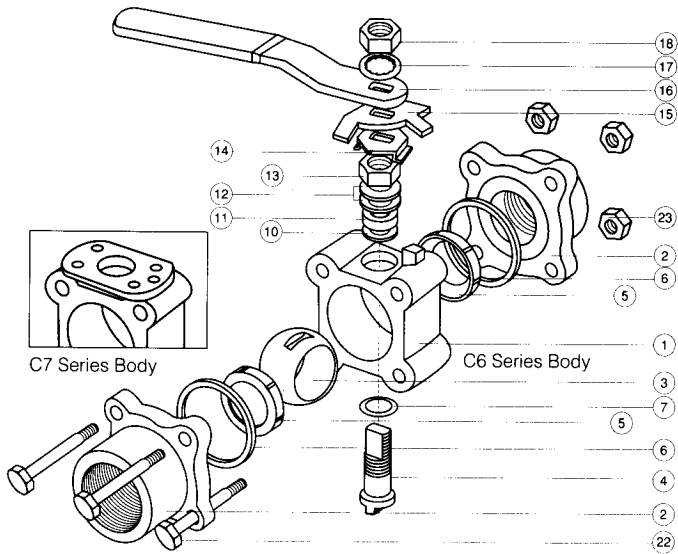
Teflon  
Reinforced Teflon

**Service Applications:**

Dry / Liquid Chlorine



# C6/C7/C32 - VALVE COMPONENTS



Item No.	Description	Material
1	Body	Carbon Steel
2	End Plug/Pipe End	Carbon Steel
3	Ball	Monel      Hastelloy C
4	Stem	Monel      Hastelloy C
5	Valve Seat	TFE      Reinforced TFE
6	Body Connector Seal	TFE
7	Stem Thrust Ring	NRG
8	Stem Location Ring 2½" - 4"	Stainless Steel
9	Stem Packing	NRG
10	Gland Packing	Stainless Steel
11	Belleville Washers	Stainless Steel
12	Packing Nut ½" - 2"	Cad. Plate C. St.
13	Packing Nut 2½" - 4"	Cad. Plate C. St.

Item No.	Description	Material
14	Lock Tab	Stainless Steel
15	Handle Stop	Carbon Steel
16	Handle ¼" - 2"	Carbon Steel
17	Lock Washer	Stainless Steel
18	Handle Nut ¼" - 2"	Carbon Steel
19	Wrench Hub 2½" - 4"	Cad. Plate C. St.
20	Hub Bolt 2½" - 4"	Stainless Steel
21	Wrench 2½" - 4"	Cad. Plate C. St.
22	Body Connector Bolt	Carbon Steel
23	Body Connector Nut	Carbon Steel
24	Stop Pin	Cad. Plate C. St.

## PERFORMANCE DATA

VALVE SIZE	APPROX. FLOW COEFF.	EQUIV. LENGTH OF SCHED. 40 PIPE feet
1/4"	8	1.9
3/8"	8	1.9
1/2"	8	1.9
3/4"	12	5.5
1"	32	3.0
1-1/4"	57	3.1
1-1/2"	80	3.9
2"	104	7.5
2-1/2"	240	5.0
3"	320	7.0
4"	580	9.5

Due to continuous development of our product range, we reserve the right to change the dimensions contained in this leaflet as required.

## FEATURES & BENEFITS

FEATURES	BENEFITS
1. Valves meet Chlorine Institute specifications. (Pamphlet 6, piping systems for Dry Chlorine.)	1. Insures proper construction, testing and packaging procedures.
2. Relief hole in Ball.	2. Vents excess ball port pressure in closed position.
3. Bottom Entry Stem.	3. Prevents accidental removal of stem while in service.
4. Live load stem packing Belleville washers.	4. Compensates for temperature and pressure fluctuations.
5. Relief hole in stem slot.	5. Vents cavity pressure in open position.
6. Wide range of product availability.	6. Allows for various material selection based on service.
7. Special packaging.	7. Ensures clean product delivery to job site.
8. Three piece design - Predrilled mounting pad.	8. Allows for easy automation.
9. Visual Position Indicator.	9. Provides quick identification of valve position.

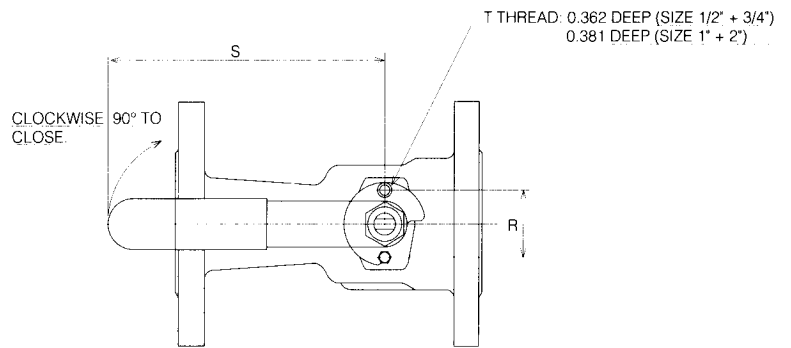
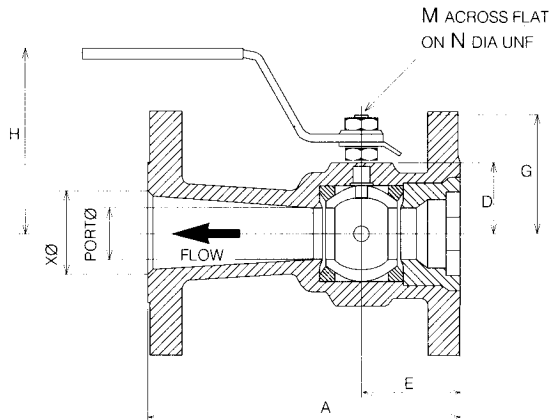
## MATERIAL RECOMMENDATIONS

Environment	Service	Max. Chlorine Conc. PPM of H <sub>2</sub> O	Recommendation for Ball & Stem Material
Clean (no chlorine in the air)	Mid-Line	20 ppm	Monel Ball & Stem
		50 ppm	Hastelloy C Ball, Monel Stem
		150 ppm	Hastelloy C Ball & Stem
Chlorine Contaminated	Mid-Line	150 ppm	Hastelloy C Ball & Stem
Chlorine	End of Line	150 ppm	Hastelloy C Ball & Stem

## GENERAL NOTES

1. All weld end valves are supplied with Buna "O" ring body connector seals. Body seals are attached loose. This provision is made to enable valve testing by factory prior to shipping. *Weld ends are disassembled by customer to weld in line, and then re-assembled with provided seals.* Complete instructions are supplied with valve.
2. Virgin PTFE® body seals supplied as standard. Other materials are supplied to order.
3. Metal corrosion is caused by the presence of water in your system. It is virtually impossible to have a water-free system due to moisture contamination from the air introduced during construction or during line breaks. Corrosion problems are most prevalent in the moving parts - the ball and stem.
4. According to the Chlorine Institute the definition of dry chlorine is chlorine having less than 150 parts-per-million (ppm) of water. However, amounts of water as small as 20ppm are enough to cause corrosion problems.
5. For a complete listing of SVF products contact your local SVF distributor.

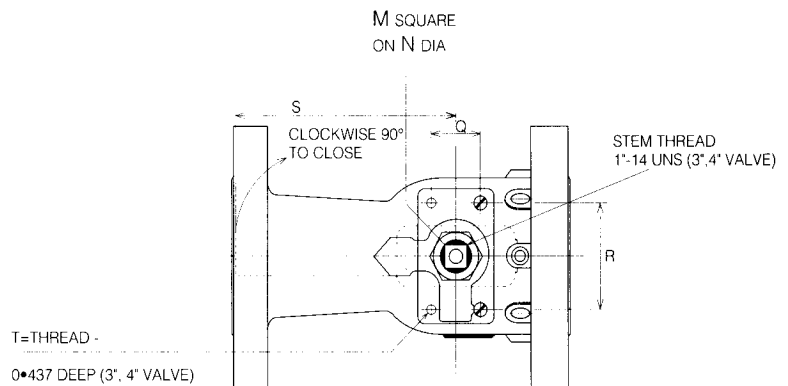
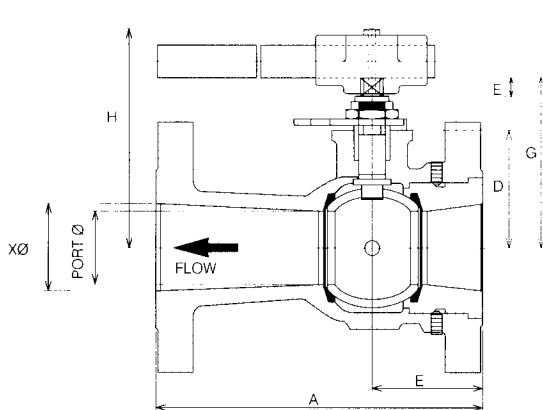
## C32 - DIMENSIONS & WEIGHTS 1/2"-2"



VALVE SIZE	PORT	APPROX. WEIGHT lbs
1/2"	0.37	6.0
3/4"	0.50	8.3
1"	0.75	11.6
1-1/2"	1.19	22.0
2"	1.44	27.2

SIZE	A	D	E	G	H	M	N	R	S	T	XØ
1/2"	4.25	.813	1.81	1.50	3.55	.22	3/8" UNF	1.25	6.00	M6	.59
3/4"	4.60	.905	1.95	1.59	3.65	.22	3/8" UNF	1.25	6.00	M6	.79
1"	5.00	1.22	2.25	2.19	4.50	.29	7/16" UNF	1.62	6.50	M6	.99
1-1/2"	6.49	1.66	2.45	2.87	4.65	.34	9/16" UNF	1.75	7.50	M8	1.57
2"	7.00	1.85	2.67	3.07	4.85	.34	9/16" UNF	1.75	7.50	M8	1.97

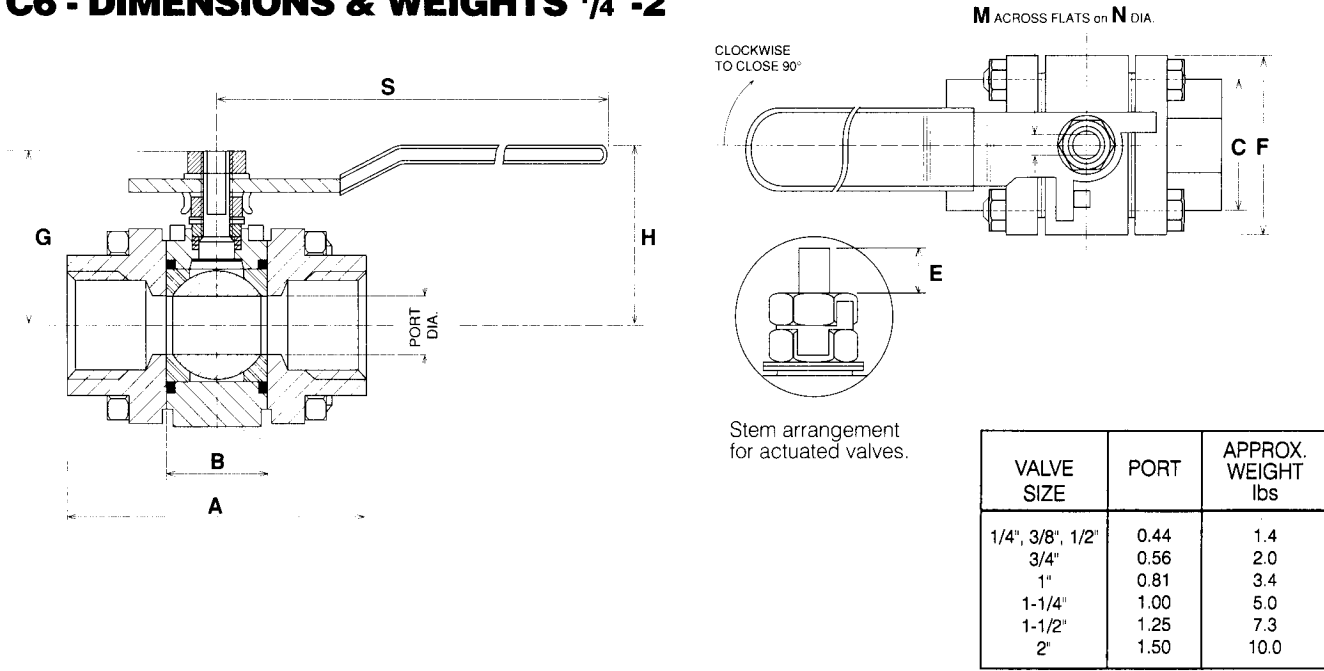
## C32 DIMENSIONS & WEIGHTS 3"-4"



VALVE SIZE	PORT	APPROX. WEIGHT lbs
3"	2.50	50
4"	3.25	80

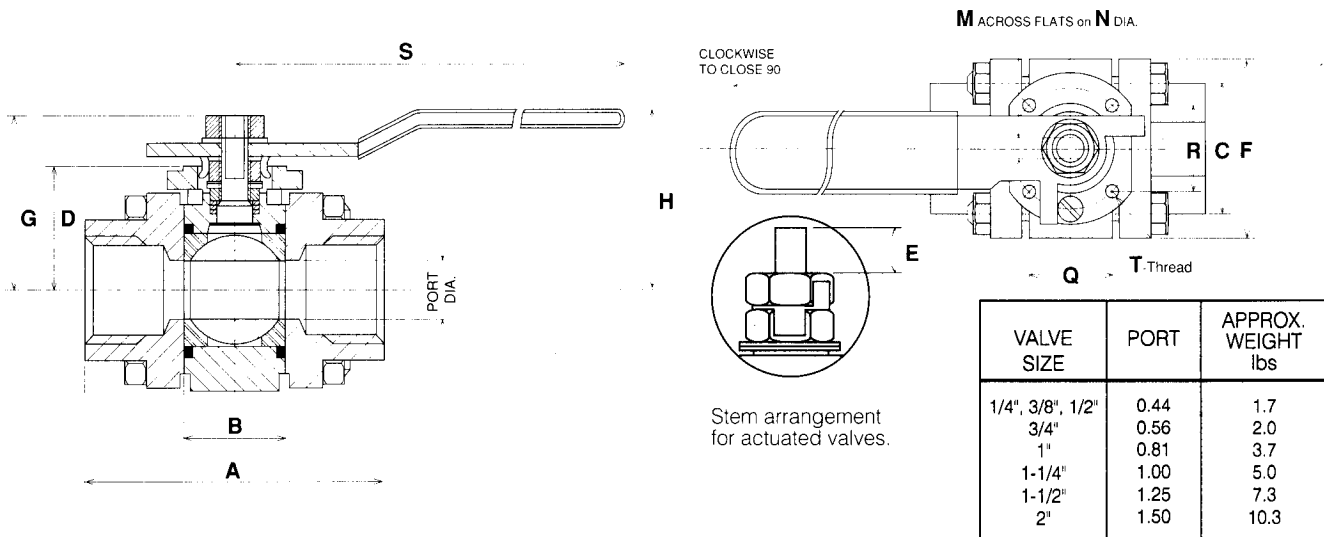
SIZE	A	D	E	G	H	M	N	Q	R	S	T	XØ
3"	11.14	3.88	.65	5.70	7.25	.74	1"-14 UNS	1.75	3.37	13.78	M10	3.06
4"	12.00	4.48	.65	6.32	7.85	.74	1"-14 UNS	1.75	3.37	22.00	M10	4.03

## C6 - DIMENSIONS & WEIGHTS 1/4"-2"

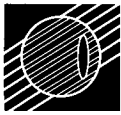


SIZE	A	B	C	E	F	G	H	M	N	S
1/4", 3/8", 1/2"	2.60	.81	1.25	.24	1.81	1.50	1.81	.22	3/8" UNF	4.49
3/4"	2.80	.97	1.50	.22	2.05	1.59	1.87	.22	3/8" UNF	4.49
1"	3.66	1.25	1.75	.30	2.45	2.19	2.40	.29	7/16" UNF	5.75
1-1/4"	4.25	1.63	2.00	.32	2.68	2.38	2.60	.29	7/16" UNF	5.75
1-1/2"	4.56	1.91	2.25	.31	3.15	2.87	3.15	.34	9/16" UNF	7.00
2"	5.04	2.22	2.62	.40	3.55	3.07	3.31	.34	9/16" UNF	7.00

## C7 - DIMENSIONS & WEIGHTS 1/4"-2"

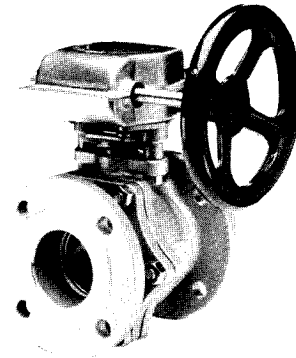
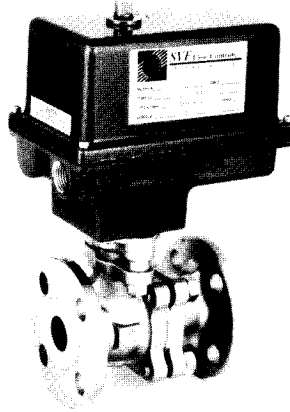
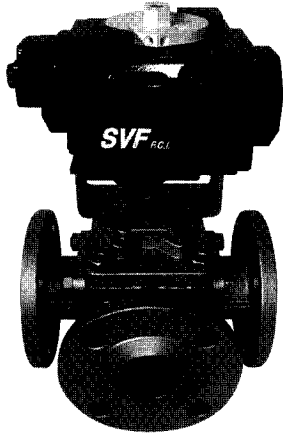


SIZE	A	B	C	D	E	F	G	H	M	N	Q	R	S	T
1/4", 3/8", 1/2"	2.60	.81	1.25	1.080	.12	1.81	1.50	1.81	.22	3/8" UNF	1.00	1.00	4.49	M5
3/4"	2.80	.97	1.50	1.240	.11	2.05	1.59	1.87	.22	3/8" UNF	1.00	1.00	4.49	M5
1"	3.66	1.25	1.75	1.504	.28	2.45	2.19	2.40	.29	7/16" UNF	1.17	1.17	5.75	M5
1-1/4"	4.25	1.63	2.00	1.465	.31	2.68	2.38	2.60	.29	7/16" UNF	1.17	1.17	5.75	M5
1-1/2"	4.56	1.91	2.25	1.713	.35	3.15	2.87	3.15	.34	9/16" UNF	1.39	1.39	7.00	M6
2"	5.04	2.22	2.62	1.870	.33	3.55	3.07	3.31	.34	9/16" UNF	1.39	1.39	7.00	M6



## AUTOMATED PRODUCTS

Three piece construction of the C6/C7/C32 Series readily lends itself to automation with either factory assembly or in-plant retrofit. All SVF actuators may be removed for inspection or repair without affecting valve integrity.



### Pneumatic Actuators

- Double Acting
- Spring Return
- Solenoids
- Limit Switches
- Positioners 3-15 psi
- Positioners 4-20 MA

### Electric Actuators

- 120 VAC
- 12/24 VDC
- NEMA 4/7
- Positioners 4-20 MA
- Reversing

### Manual Valves

- Gear Operators
- Stem Extensions
- Fusible Link
- Locking Device

## HOW TO ORDER

1" C6 4 4 9 9 T T - SE OPTIONS

SIZE	STYLE	BODY & END MATERIAL	BALL & STEM MATERIAL	SEAT	SEAL	ENDS	OPTIONS
1/4" 3/8" 1/2" 3/4" 1" 1-1/4" 1-1/2" 2"	C6 C7 (ISO Design 1/4" - 2")	4 - Carbon Steel	3 - Monel 9 - Hastelloy C	T - TFE R - Reinforced Teflon®	T-TFE	SE - Screwed End SW - Socket Weld	ie: Actuator Oval Handle Locking Device
1/2" 3/4" 1" 1-1/2" 2" 3" 4"	C32	4 - Carbon Steel	3 - Monel 9 - Hastelloy C	T - TFE R - Reinforced Teflon®	T-TFE	300# RF Flanged - Raised Face	ie: Actuator Oval Handle Locking Device