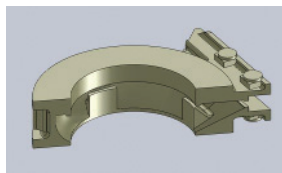


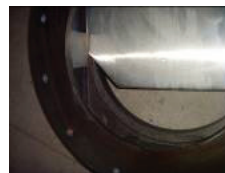
## Model 955 Hopper Isolation Knife Gate Valve

FIG 955 is a knife gate valve specially designed for use as isolation valve for silos handling powders. The body design includes a large relieved area (see sketch below) on the downstream side that can accommodate some material accumulation without affecting the closing operation of the valve. As these valves are typically mounted with seat facing downward under silo, the body is provided with large cast guides to support the material load on the gate. This design uses a thinner gate than standard knife gate valves as same is sufficient for the typical gravity flow situations where such valves are used.

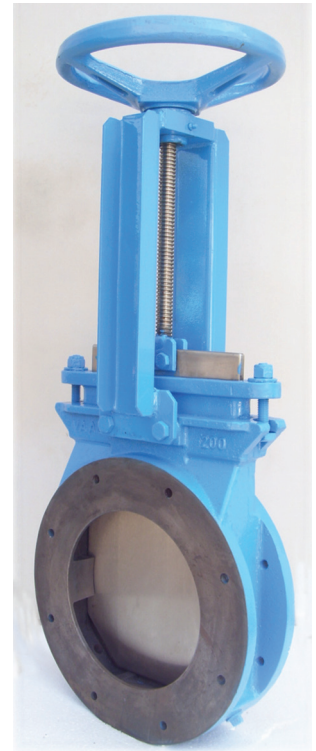
With flanged ends, the downstream piping can be removed easily for maintenance with the valve held under silo with only upstream bolting. FIG 955 also utilizes a flat edged gate with beveled corners (see sketch below) that helps to cut through accumulated powder. The valve is designed to be dust tight but is not recommended for liquid flow situations requiring tight shut-off.



Body with relieved outlet area and multiple cast gate supports



Flat edge beveled gate



**Note :** Similar to other standard knife gate valves, FIG 955 valves are also not recommended for use in locations where the valve would be required to close against stagnant (non-moving) column of powder material. Consult VAAS for other solutions for such services.

### TYPICAL APPLICATIONS

- Gravity flow silo isolation

### SPECIFICATIONS

Type	Uni-directional knife gate valve
Size range	100,150,200,250 & 300mm
Pressure rating	CWP-5 bar (75 psi)
Endstyle	Flanged
Face-to face	Proprietary (dimensions are higher than MSS SP-81 specifications)
Drilling	Proprietary; other feasible drilling standards on request.
Body	Cast iron
Seat	Integral metal seat
Gate	304stainless steel plated is standard; others on request
Stem	304 st. steel standard; others on request
Superstructure	Steel channel fabrication, epoxy coated standard
Actuator options	Direct mounted rising stem hand wheel is standard; chain wheel, pneumatic actuator and other options available

## TEST SPECIFICATIONS

Body shell test                      Tested at 1.5 times CWP  
 Seat test                                Not tested; valve is designed to be "powder tight"

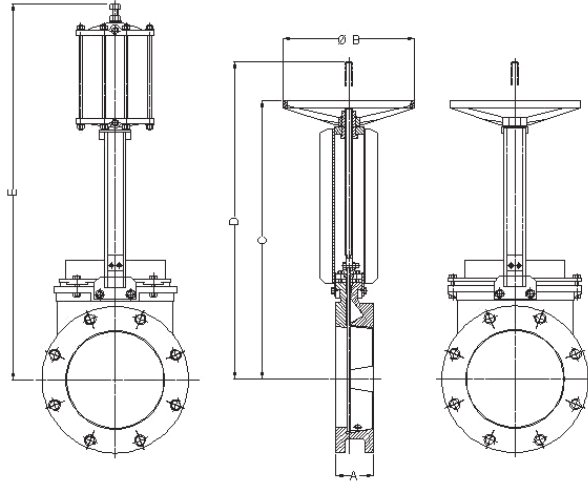
## PAINTING

Standard paint is two-pack epoxy in blue color (other paint options available on request)

## DIMENSIONS

All dimensions in mm

Valve size, mm (inch)	A	B	C	D	E
100 (4)	65	203	410	485	620
150 (6)	75	254	510	635	770
200 (8)	85	254	610	790	915
250 (10)	110	305	710	940	1090
300 (12)	110	406	770	1090	1265



## SELECTION

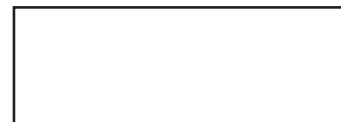
Valve Size, mm (inch)	100 (4)	150 (6)	200 (8)	250 (10)	300 (12)
Direct Hand wheel	CHG	CHG	CHG	CHG	CHG
Pneumatic DA Cylinder	C4	C4	C4	C6	C8

## ORDERING

Please refer Datasheet 100 for complete ordering information for VAAS range of valves



**VAAS INDUSTRIES PVT LTD**  
 73, Industrial Estate, Chennai - 600 096, India  
[www.vaasval.com](http://www.vaasval.com)



Marketing Head Office  
 73, Industrial Estate, Chennai - 600 096, India  
 Tel: +91-44-4207-8227 Fax: +91-44-4228-9500 Email: [sales@vaasval.com](mailto:sales@vaasval.com) Website : [www.vaas.in](http://www.vaas.in)

VAAS Sales offices in India

New Delhi Tel : +91-11-6662 9546 Email: [northsales@vaasval.com](mailto:northsales@vaasval.com)  
 Mumbai Tel : +91-22-6710 0398 Email: [westsales@vaasval.com](mailto:westsales@vaasval.com)  
 Kolkata Tel : +91-33-2280 3107 Email: [eastsales@vaasval.com](mailto:eastsales@vaasval.com)  
 Chennai Tel : +91-44-2852 3411 Email: [southsales@vaasval.com](mailto:southsales@vaasval.com)

VAAS Sales offices Overseas

VAAS Asia Email : [sales\\_asiapacific@vaasval.com](mailto:sales_asiapacific@vaasval.com)  
 VAAS America Email : [sales\\_americas@vaasval.com](mailto:sales_americas@vaasval.com)  
 VAAS Europe Email : [sales\\_europe@vaasval.com](mailto:sales_europe@vaasval.com)  
 VAAS Pacific Email : [sales\\_pacific@vaasval.com](mailto:sales_pacific@vaasval.com)

All statements, technical information and recommendations in this bulletin are for general use only. Consult VAAS representative or factory for specific requirements and material selection for your intended application. The right to change or modify product design or product without prior notice is reserved.

VAAS/955-Edition-03/2009/5000/03/2009